

York Marketplace

2501 E Market St, York, PA 17402




1,200 - 3,573 SF Available for Lease



York Marketplace

2501 E Market St, York, PA 17402

Highlights

- Join:  **GIANT**  
- York Marketplace is shadow-anchored by a high-volume Giant which brings high traffic to the center
- Dynamic mix of national tenants including Crunch Fitness, Lowes, Starbucks & Red Lobster
- Neighboring retailers, such as Target and Walmart, attract a regional customer base
- The center has excellent visibility and access from E Market St (17,164 VPD)
- Over 96,000 daytime employees within three miles
- GLA 304,974 SF



Population

69,397



Households

27,684



Avg Household Income


\$74,031

Questions? Get in touch.



J.C. BAR

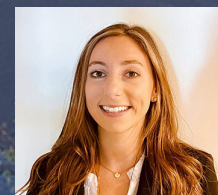


Greg Jones


 (610) 234-6491


 (484) 948-5217

 gjones@jcbarprop.com



Melissa Lippe

 (610) 206-3319

 (215) 264-6964

 mlippe@jcbarprop.com

York Marketplace

2501 E Market St, York, PA 17402

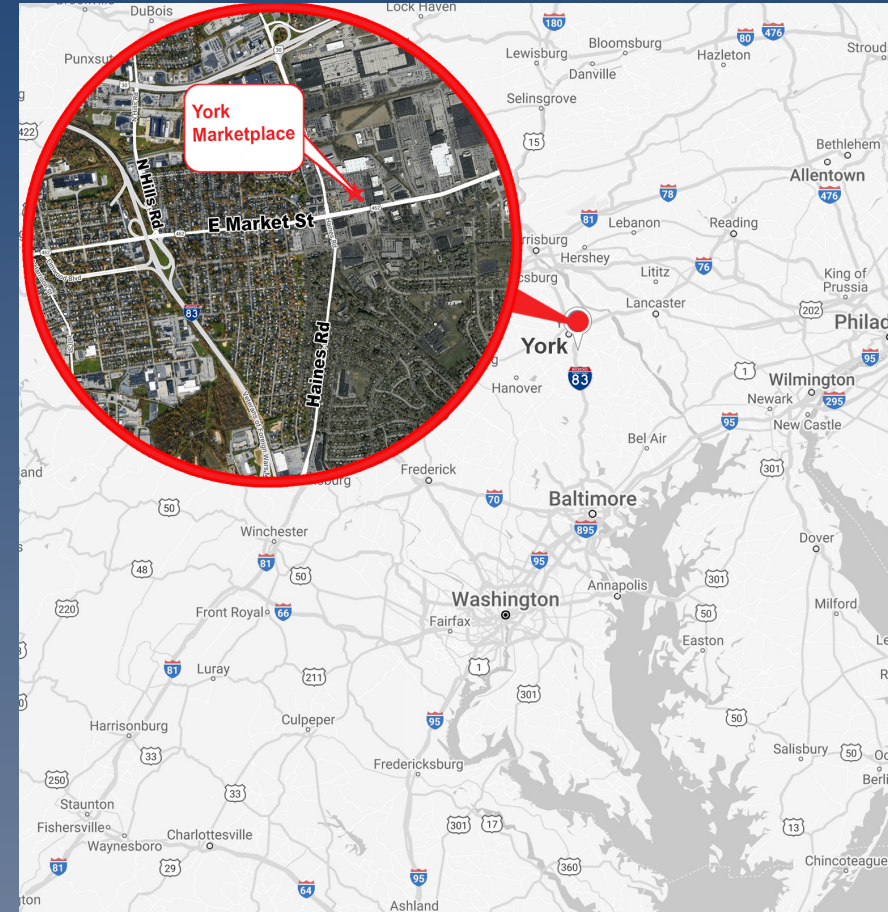
About York Marketplace

York Marketplace is a 304,974 SF grocery-anchored retail shopping center centrally located in York, PA at a signalized intersection along E Market St (17,164 VPD). The center is co-anchored by Giant Foods, Lowe's, Crunch Fitness, and has excellent co-tenancy of PA Fine Wine & Good Spirits, and Red Lobster, and more.

York Marketplace is strategically positioned with significant frontage along E Market St, the area's heaviest traveled roadway and focal point for retail. Within a 20-minute drive time show an impressive 229,084 people with household incomes of more than \$79,555, and daytime employment demographics are equally as strong with 125,057.

The property is managed by J.C. BAR Properties.

Demographic	1 Mile	3 Miles	5 Miles
Population	7,312	69,397	141,444
Households	2,939	27,684	55,219
Avg Household Income	\$80,045	\$74,031	\$77,075
Daytime Employees	6,182	56,313	114,234



Questions? Get in touch.



Greg Jones

📞 (610) 234-6491

📱 (484) 948-5217

✉️ gjones@jcbarprop.com



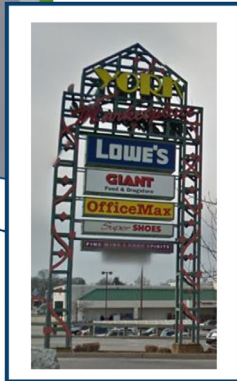
Melissa Lippe

📞 (610) 206-3319

📱 (215) 264-6964

✉️ mlippe@jcbarprop.com

1	Kids First Swim School	7,996	SF
2	Red Lobster	9,267	SF
3	My Eye Dr.	2,770	SF
4	AVAILABLE	1,200	SF
5	Fine Wine & Good Spirits	12,257	SF
6	Super Shoes	20,000	SF
7	AVAILABLE	3,573	SF
8	Viet-Thai Cafe	2,900	SF
9	AVAILABLE	3,060	SF
10	Firehouse Sub	2,724	SF
11	GameStop	1,800	SF
12	VIP Nails	1,600	SF
13	Verizon	1,480	SF
14	Palm Beach Tan	4,116	SF
15	Starbucks	1,600	SF
16	Lowe's	125,353	SF
17	Crunch Fitness	23,500	SF
18	Fulton Bank	3,387	SF
19	The Lube Center	PAD	SF
20	Giant	74,541	SF



3-Mile Radius



SITE

Callout box containing logos for: metro by T-Mobile, AT&T, Cricket, Grocery Outlet, Hardee's, Verizon, ALDI, Dunkin', Family Dollar, TACO BELL, Burger King, Arby's, DOLLAR TREE, and DOLLAR GENERAL.

Callout box containing logos for: Burger King, Starbucks, Subway, metro by T-Mobile, Marshalls, TACO BELL, BIG LOTS!, KOHL'S, DAVID'S BRAND, target, ROSS DRESS FOR LESS, Boscon's, Pleasureville, and five BEL'W.

Callout box containing logos for: Cricket, T-Mobile, MOD, AT&T, Firehouse Subs, DUNKIN', Dunkin', Burlington, Walmart, Subway, Starbucks, Sam's Club, Wendy's Fried Chicken, TACO BELL, McDonald's, Arby's, DQ, GIANT, ALDI, weis, DOLLAR TREE, DOLLAR GENERAL, PAPA JOHN'S, Little Caesars, and Dunkin'.

Callout box containing logos for: IGA, the Yard, Domino's, DOLLAR GENERAL, Subway, and McDonald's.

Callout box containing logos for: metro by T-Mobile, Subway, Little Caesars, McDonald's, and FAMILY DOLLAR.

Callout box containing logo for: DOLLAR GENERAL.

Callout box containing logos for: Dunkin', Save A Lot, FAMILY DOLLAR, and Pizza Hut.

Callout box containing logo for: DUNKIN'.

Callout box containing logos for: T-Mobile, Dunkin', DOLLAR TREE, Hardee's, FAMILY DOLLAR, and DOLLAR GENERAL.

Callout box containing logos for: PAPA JOHN'S, DOLLAR GENERAL, and DQ.

Callout box containing logos for: OLLIE'S, DOLLAR TREE, GROCERY OUTLET, Planet Fitness, Burger King, and Pizza Hut.

Callout box containing logos for: Price Rite, DOLLAR GENERAL, Dunkin', Subway, Dunkin', McDonald's, GIANT, weis, and DOLLAR TREE.

Freysville

