

The Streets of Chester




J.C.BAR



The Streets of Chester

270 US-206 South, Chester Borough, NJ 07930

±1,325-9,640 SF Available For Lease | Anchor Space Available!



Questions? Contact Us.

Greg Jones

GJones@jcbarprop.com

p. 610-234-6491

c. 484-948-5217

The Streets of Chester

270 US-206 South, Chester Borough, NJ 07930

±1,325-9,640 SF Available For Lease | Anchor Space Available!

Under New Ownership!

Attractive Incentives and Capital Improvements Available

Highlights

- The Premier Shopping Destination in New Jersey's Affluent Morris County
- Uniquely Located in an Exclusive Retail Node Along US-206 with 22,916 AADT
- GLA of 104,717 SF
- \$271,520 Average House Hold Income Within a 3-mile Radius

JOIN



AtlantiCare

BANANA REPUBLIC



WHBM

YOGASIX

ANN TAYLOR

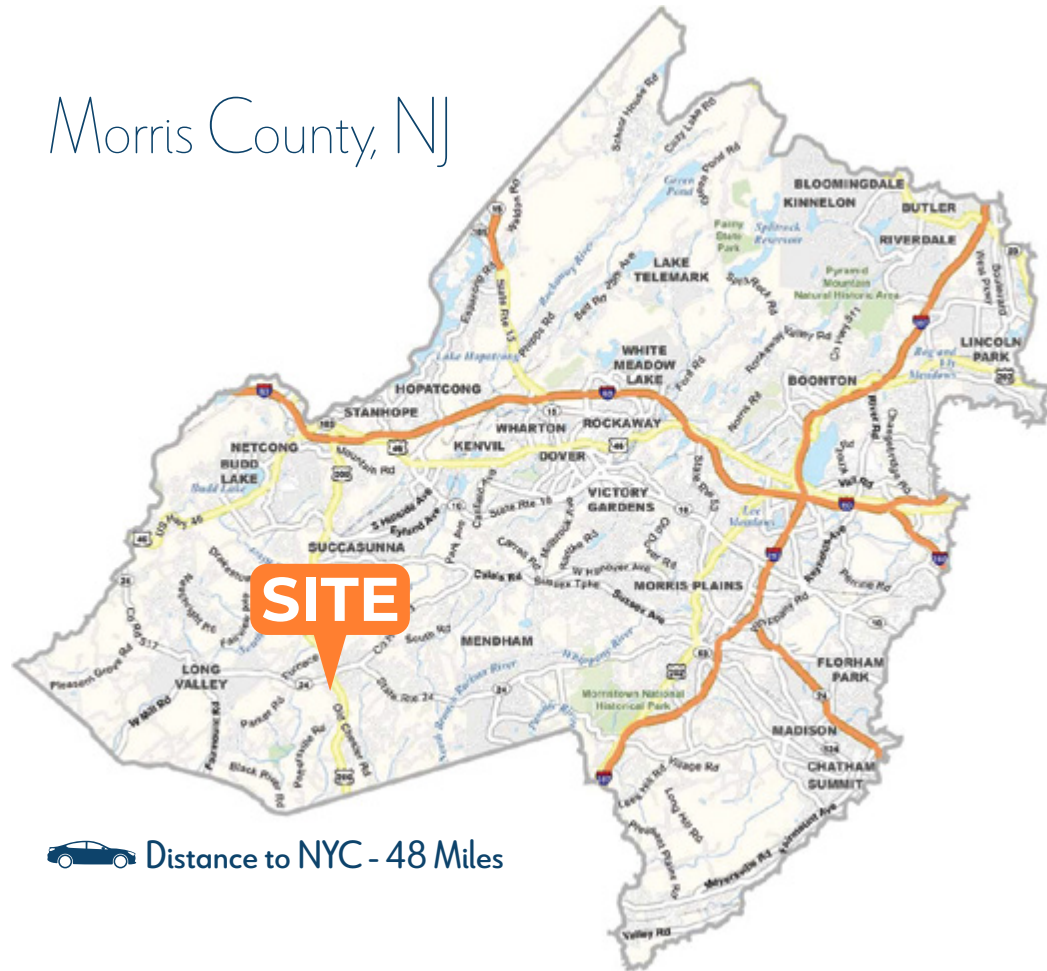
T-Mobile



WOLF GANG
BAKERY & GROOMING

Demographic	1 Mile	3 Miles	5 Miles
Population	2,230	10,151	32,201
Households	815	3,566	11,204
Avg HH Income	\$249,054	\$271,520	\$256,881
Daytime Employees	2,320	4,357	13,686

Morris County, NJ



Distance to NYC - 48 Miles

Questions? Contact Us.

Greg Jones

GJones@jcbarprop.com

p. 610-234-6491

c. 484-948-5217

The Streets of Chester

270 US-206 South, Chester Borough (Morris County), NJ 07930



Unit	Tenant	Square Footage
A110	Starbucks	±3,362 SF
A112	WH/BM	±3,172 SF
A114	Atlantcare	±2,700 SF
A116	AVAILABLE	±3,300 SF
A120	AVAILABLE	±1,325 SF
A130	AVAILABLE	±5,015 SF
A140	Iris Tree	±1,440 SF
A142	Jersey Mike's	±2,160 SF
A150	AVAILABLE	±2,160 SF
A160	GameChanger	±1,440 SF
A180	AVAILABLE	±4,000 SF
A182	Fast Frame	±1,600 SF
A190	Thai Kitchen	±2,470 SF
B110	The GAP	±10,259 SF
B120	AVAILABLE	±3,796 SF
B130	Ann Taylor	±5,005 SF
B140	Atlantcare	±6,066 SF
B150	Green's Natural Foods	±5,810 SF
B160	T-Mobile	±1,900 SF
B170	AVAILABLE	±4,761 SF
B182	Yoga 6	±2,265 SF
B190	AVAILABLE	±3,525 SF
B195	Woof Gang Bakery	±1,419 SF
B200	AVAILABLE	±5,767 SF
B210	Elements Therapy	±2,500 SF
B220	AVAILABLE (TALBOTS)	±8,700 SF
B250	Banana Republic	±8,800 SF
Total SF		±104,717 SF



Site Plan



Starbucks Corporation is an American multinational chain of coffeehouses and roastery reserves headquartered in Seattle, Washington. The company has over 35,000 stores in 80 countries, +15,000 of which are located in the United States and is the world's largest coffeehouse chain.



AtlantiCare

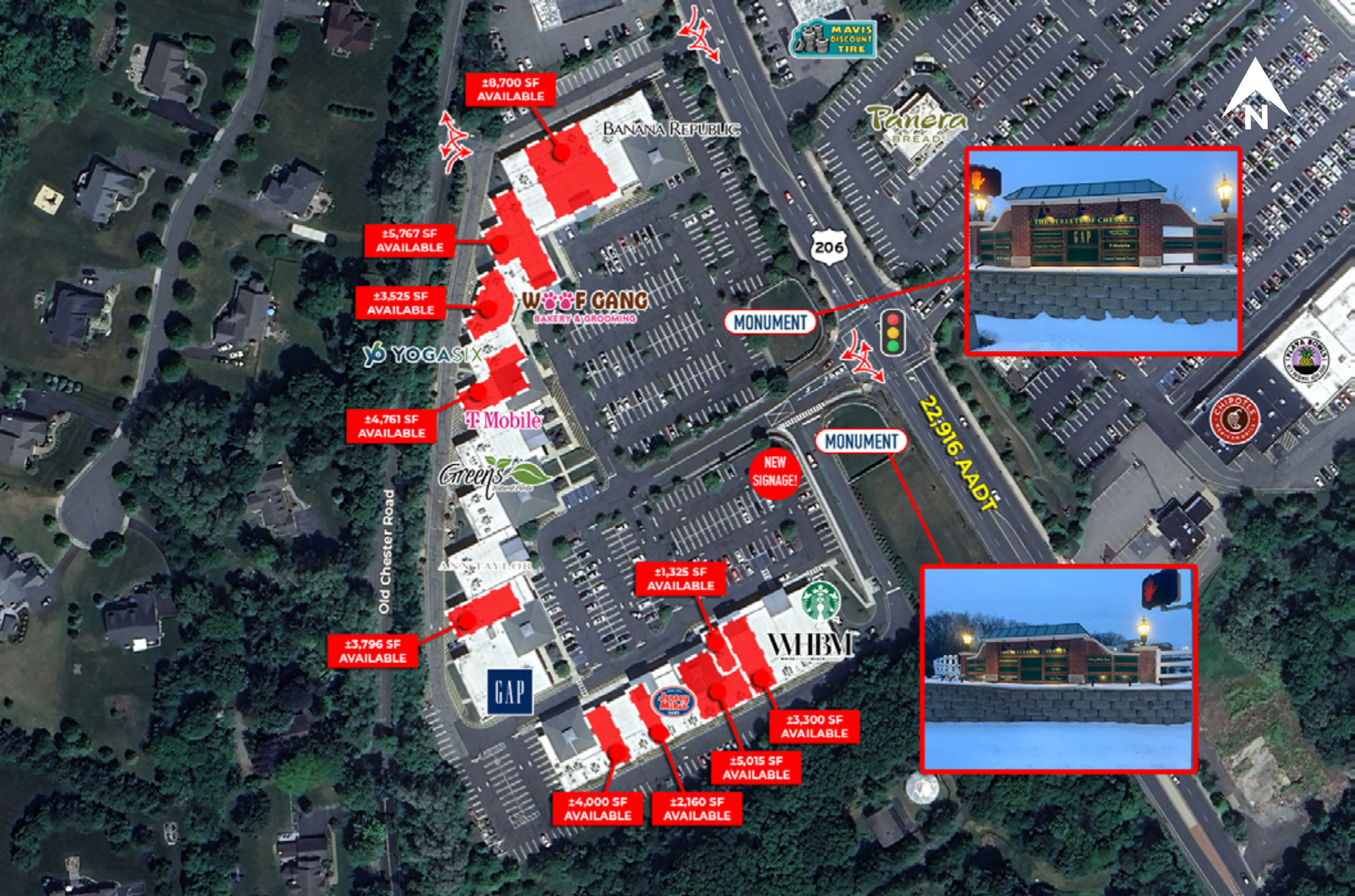
AtlantiCare is a major not-for-profit integrated healthcare system based in NJ and is the largest healthcare organization and non-casino employer in southeastern New Jersey. It provides a wide range of primary, specialty, and advanced medical services, including cancer, cardiac, and neonatal care.



T-Mobile™

T-Mobile US, Inc. is an American wireless network. Its majority shareholder and namesake is the German telecommunications company Deutsche Telekom. T-Mobile is the second largest wireless carrier in the United States, with 132.8 million subscribers

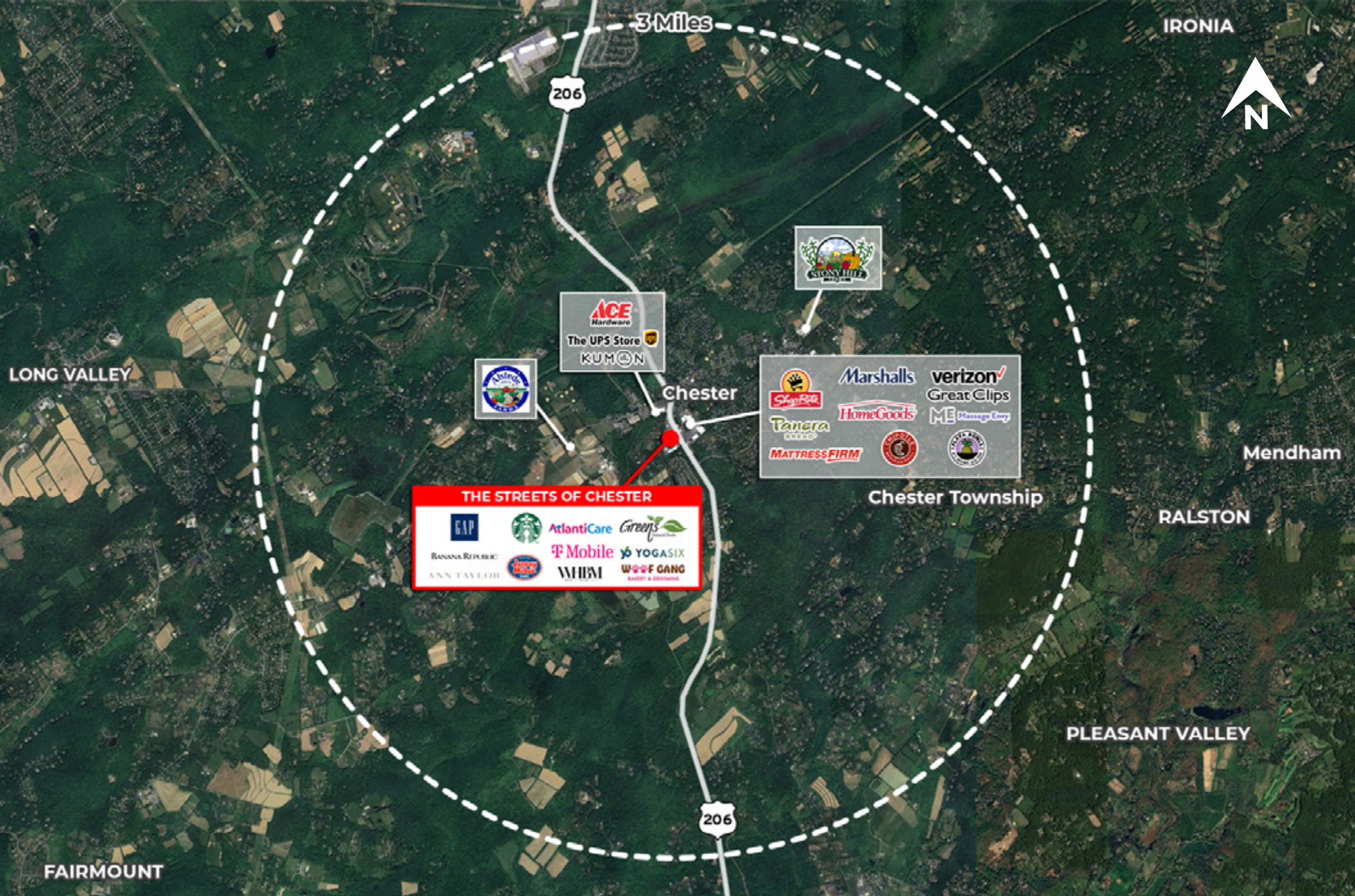




Zoom Aerial



THE STREETS OF CHESTER



Market Aerial



Site Photos



Site Photos