

Stowe Crossing

1630-1668 W High Street, Pottstown, PA 19464

±2,650-5,300 SF Available For Lease



JOIN

DUNKIN'

DOLLAR GENERAL

 **TurkeyHill**

Questions? Contact Us.

Greg Jones

GJones@jcbarprop.com

p. 610-234-6491

c. 484-948-5217

Colin Hodgson

CHodgson@jcbarprop.com

p. 610-206-3791

c. 302-588-8179

Stowe Crossing

1630-1668 W High Street, Pottstown, PA 19464

±2,650-5,300 SF Available For Lease

Highlights

- Located along W High Street with 12,419 AADT
- Minutes from the Center of Pottstown as well as access to Benjamin Franklin Highway (Route 422) with 35,116 AADT
- Co-Tenancy with Dollar General and Dunkin Donuts
- Directly Adjacent to Several Neighborhoods Driving Local Traffic to the Shopping Center

Demographic	1 Mile	3 Miles	5 Miles
Population	4,093	35,486	71,667
Households	1,715	14,465	28,167
Avg HH Income	\$88,839	\$96,425	\$116,608
Daytime Employees	1,375	17,876	27,820

Map data ©2025 Google



Questions? Contact Us.

Greg Jones

GJones@jcbarprop.com
p. 610-234-6491
c. 484-948-5217

Colin Hodgson

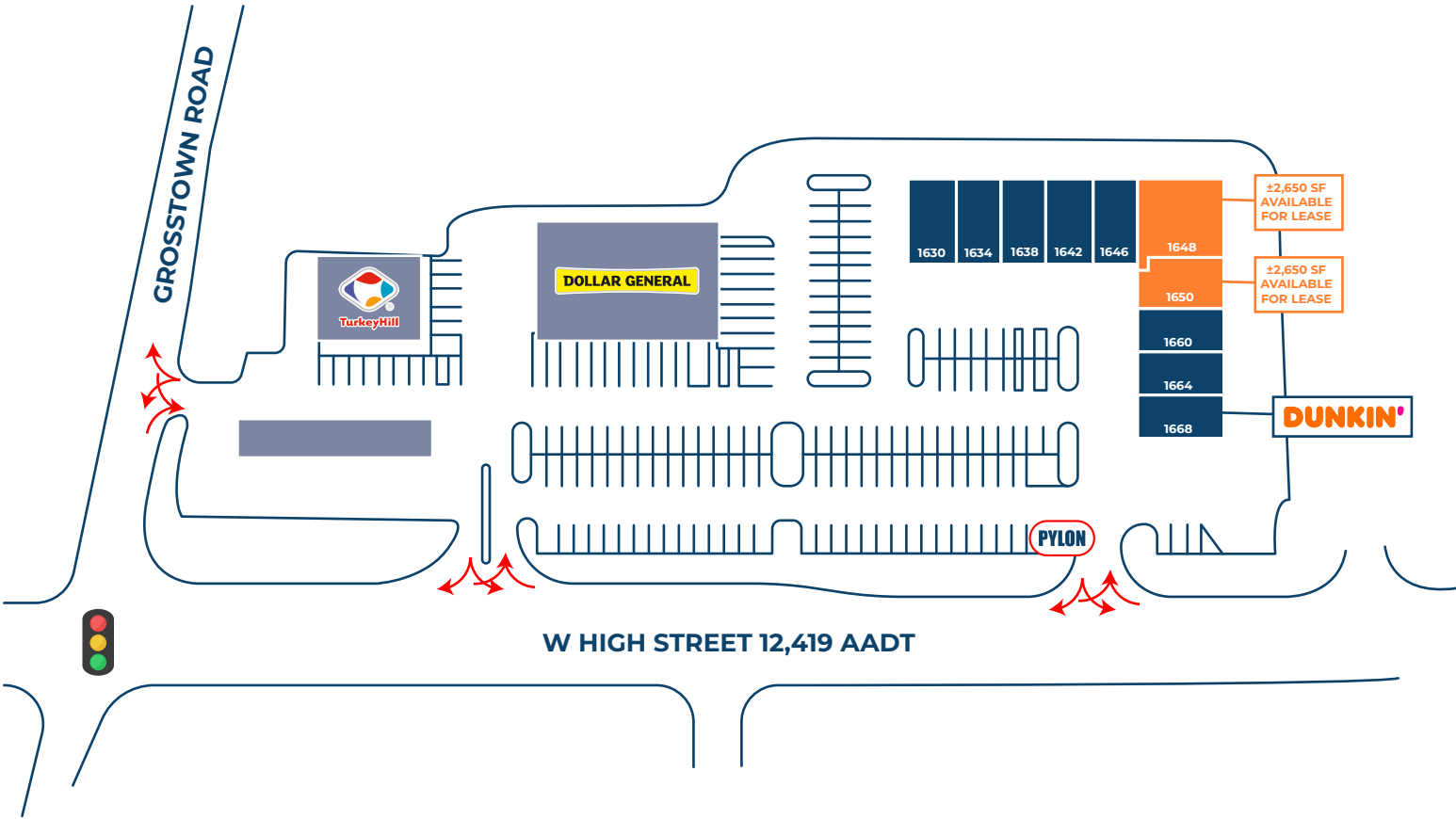
CHodgson@jcbarprop.com
p. 610-206-3791
c. 302-588-8179

Stowe Crossings

1630-1668 W High Street, Pottstown, PA 19464



Unit	Tenant	Square Footage
1630	Stowe Laundromat	±1,800 SF
1634	Valentino's Pizza	±1,800 SF
1638	Natural Nail Spa	±1,800 SF
1642	House of Biryani & Kebabs	±1,500 SF
1646	Stars & Stripes Game Room	±2,100 SF
1648	AVAILABLE	±2,650 SF
1650	AVAILABLE	±2,650 SF
1660	Smoke N Vape	±1,800 SF
1664	Rejuvenating Massage	±1,800 SF
1668	Dunkin'	±1,800 SF
Total SF		±19,700 SF



Site Plan

The information and images contained herein are from sources deemed reliable. However, J.C.BAR Properties, Inc. makes no representation whatsoever as to their accuracy or authenticity. Images shown may be modified for illustrative purposes. Images may be out-of-date and not current.



W High Street 12,419 AADT

PYLON

DUNKIN'

±2,650 SF
AVAILABLE
FOR LEASE

±2,650 SF
AVAILABLE
FOR LEASE

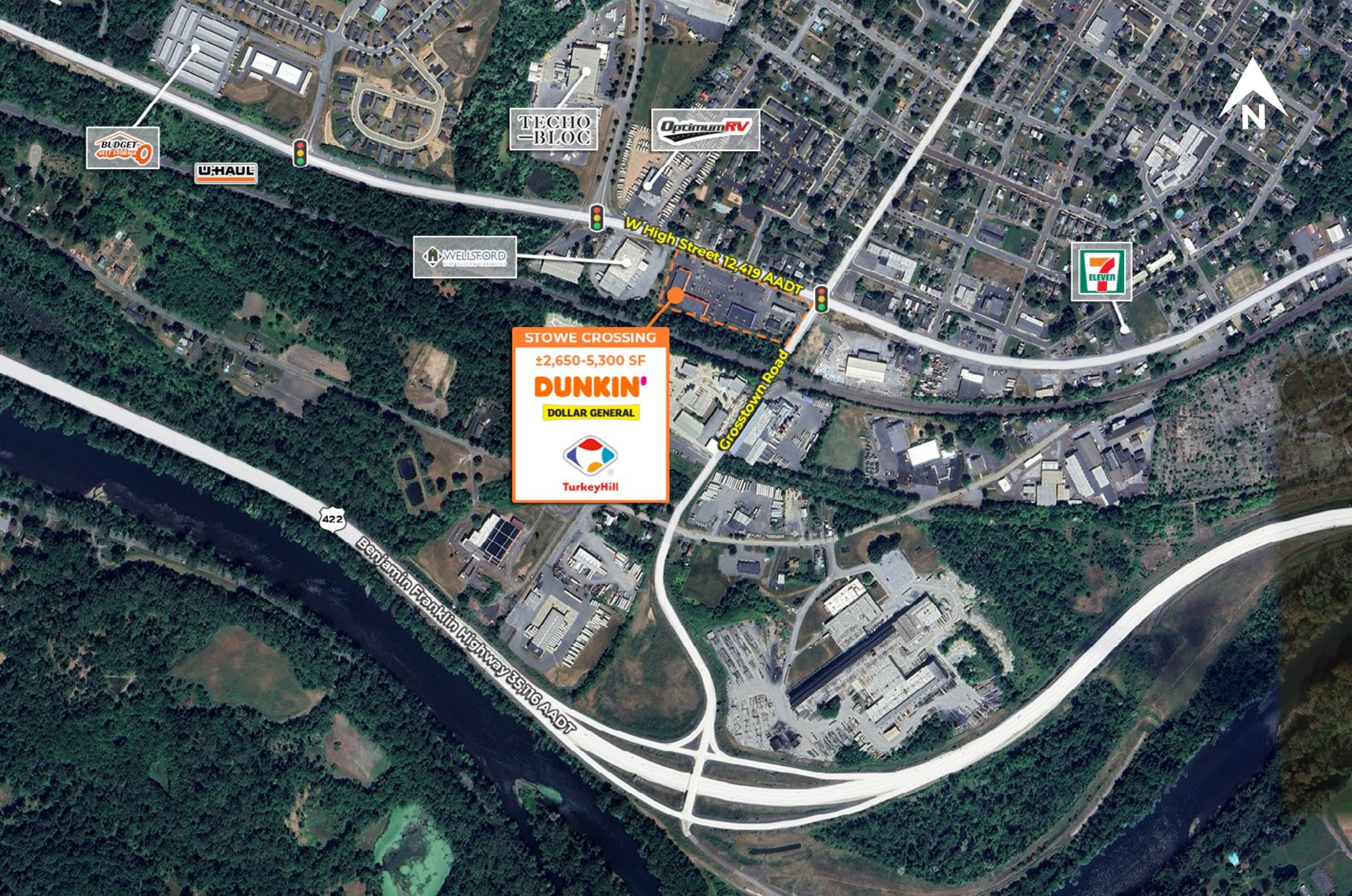
DOLLAR GENERAL

TurkeyHill

Grosstown Road

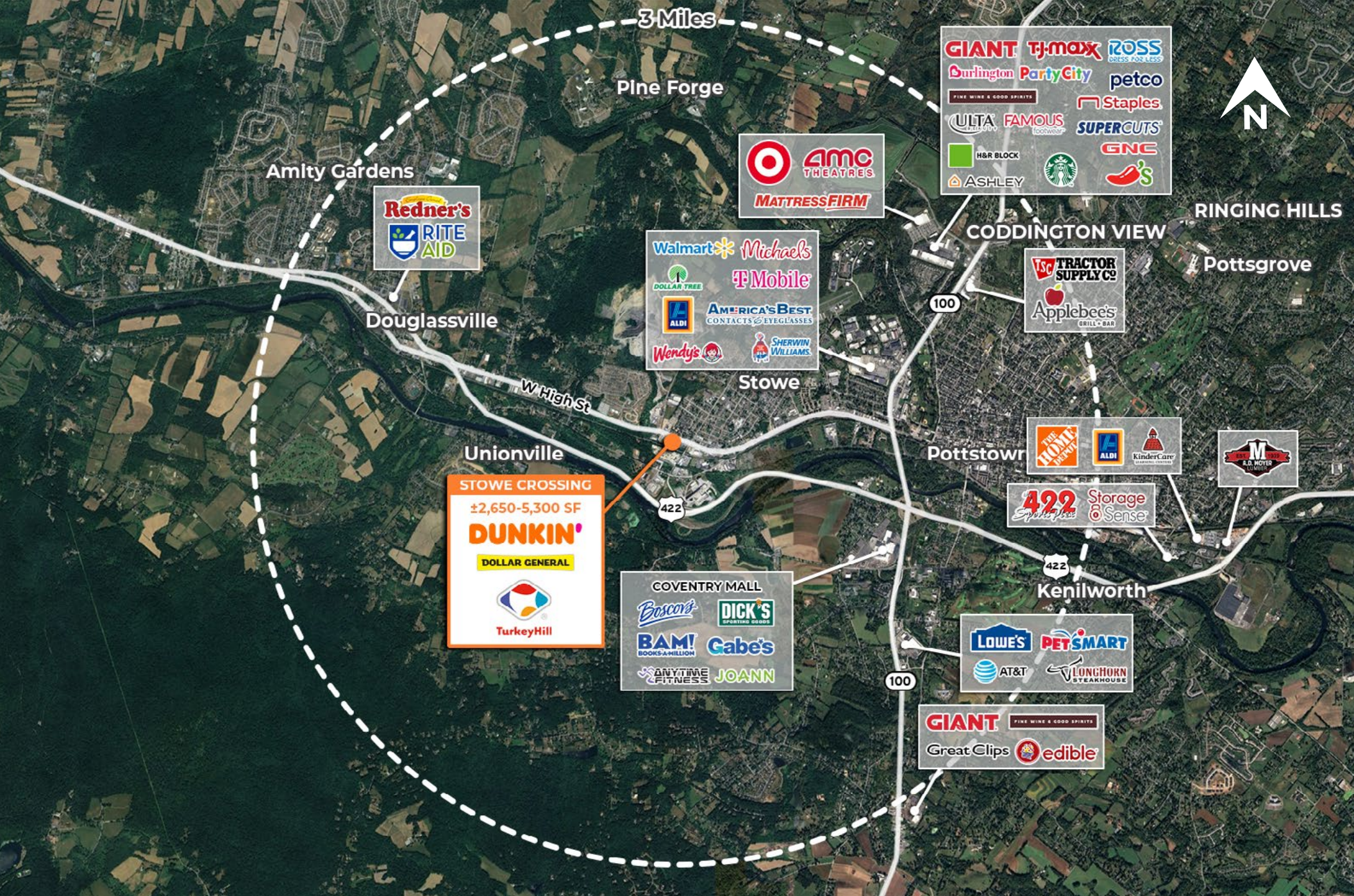


Zoom Aerial



Local Aerial

The information and images contained herein are from sources deemed reliable. However, J.C.BAR Properties, Inc. makes no representation whatsoever as to their accuracy or authenticity. Images shown may be modified for illustrative purposes. Images may be out-of-date and not current.



Market Aerial