

Southampton Shopping Center

466 Second Street Pike - Southampton, PA 18966

±600 - 3,500 SF Available For Lease



Questions? Contact Us.

Greg Jones

GJones@jcbarprop.com

p. 610-234-6491

c. 484-948-5217

Colin Hodgson

CHodgson@jcbarprop.com

p. 610-206-3791

c. 302-588-8179

Southampton Shopping Center

466 Second Street Pike - Southampton, PA 18966

±600 - 3,500 SF Available For Lease

Highlights

- Giant anchored shopping center with fantastic co-tenancy
- Conveniently located half mile from Pennsylvania Turnpike (95,455 AADT)
- Floor plans ranging from 1,300 - 3,060 SF available
- 62,164 residents within 3 miles
- GLA: 150,847

JOIN

GIANT ME Message Envy
PET SUPPLIES PLUS
TOUS les JOURS

FINE WINE & GOOD SPIRITS

myeyeDR

five
BELW

SALADWORKS

Citizens

Penn Community Bank

Demographic

	1 Mile	3 Miles	5 Miles
Population	7,356	62,164	213,482
Households	2,977	23,974	83,417
Avg HH Income	\$128,706	\$152,379	\$142,394
Daytime Employees	8,145	30,059	110,377

Map data ©2024 Google



±150,847 SF
Gross Leasable Area



±16.75 AC
Land Size Area



89%
Occupancy



821
Parking Spaces

Questions? Contact Us.

Greg Jones

GJones@jcbarprop.com
p. 610-234-6491
c. 484-948-5217

Colin Hodgson

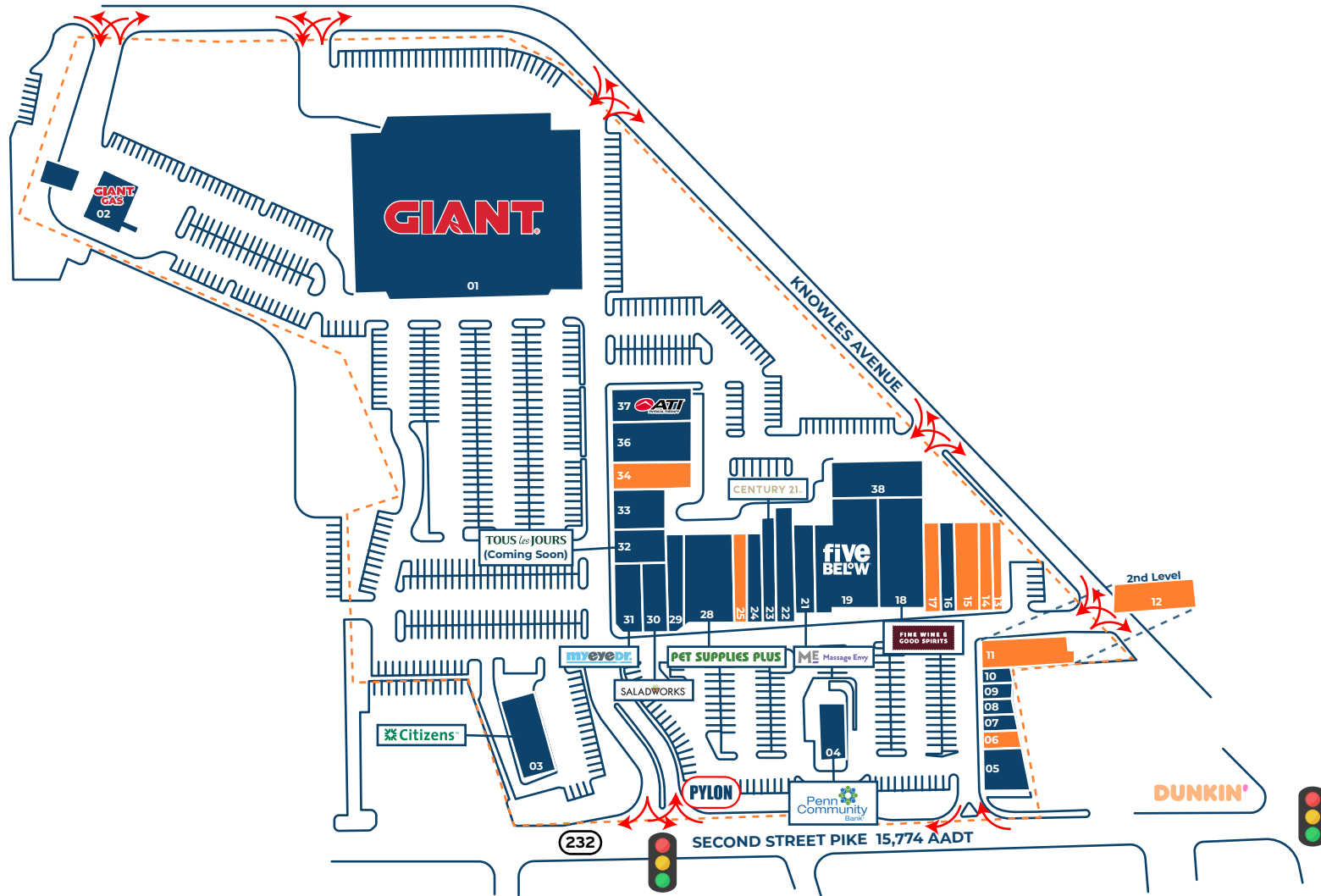
CHodgson@jcbarprop.com
p. 610-206-3791
c. 302-588-8179

Southampton Shopping Center

466 Second Street Pike - Southampton, PA 18966



Unit	Tenant	Square Footage
01	Giant	±59,892 SF
02	Giant Gas	±3,100 SF
03	Citizen's Bank	±3,666 SF
04	Penn Community Bank	±2,415 SF
05	Robin Hood Restaurant	±2,690 SF
06	AVAILABLE	±600 SF
07	AC Rehab Products	±600 SF
08	American News and Tobacco	±600 SF
09	Threading the City	±600 SF
10	Barber 777 Shop	±600 SF
11	AVAILABLE	±3,060 SF
12	AVAILABLE	±3,500 SF
13	AVAILABLE	±1,200 SF
14	AVAILABLE	±1,500 SF
15	AVAILABLE	±3,000 SF
16	Osaka Sushi Bar	±2,000 SF
17	AVAILABLE	±2,000 SF
18	Wine and Spirits	±6,920 SF
19	Five Below	±8,941 SF
21	Massage Envy	±3,000 SF
22	2nd Street Bagels	±2,000 SF
23	Century 21	±2,160 SF
24	Roman Delight	±2,000 SF
25	AVAILABLE	±1,600 SF
28	Pet Supplies Plus	±6,000 SF
29	Flowersome	±2,000 SF
30	Saladworks	±2,800 SF
31	MyEyeDr.	±2,800 SF
32	Tous Les Jour	±1,300 SF
33	Tip N Toe Spa	±1,400 SF
34	AVAILABLE	±2,700 SF
36	House of Pho and Taiko Bistro	±5,400 SF
37	ATI Physical Therapy	±3,150 SF
38	Quaint Oak Bank	±5,263 SF
Total SF		±150,847 SF



Site Plan

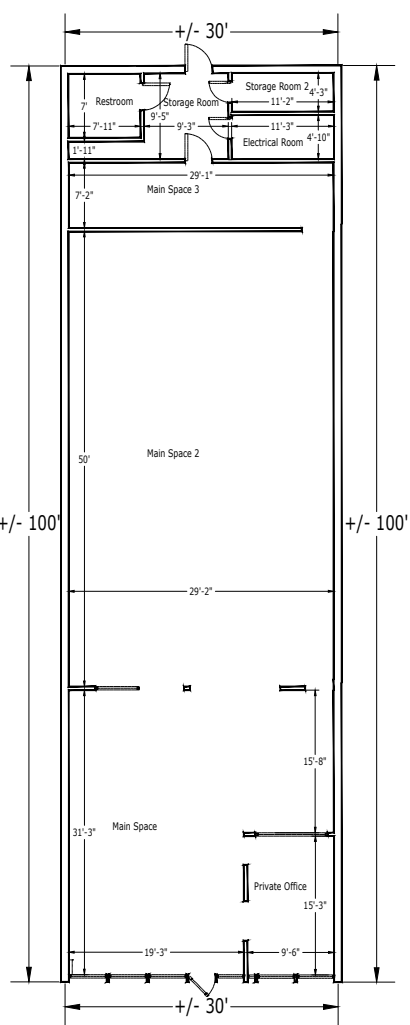
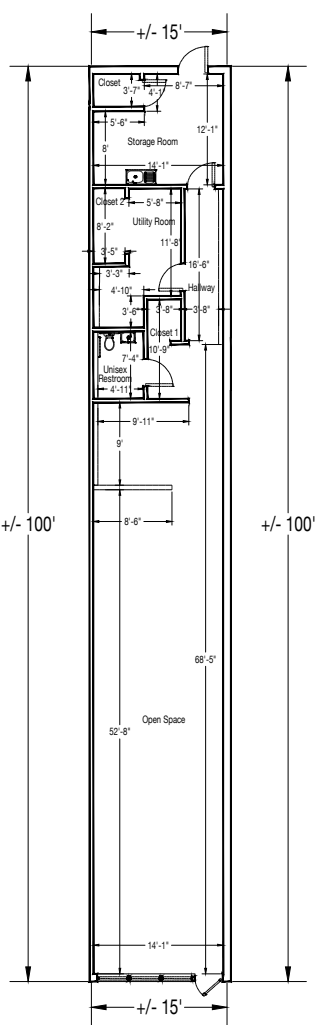
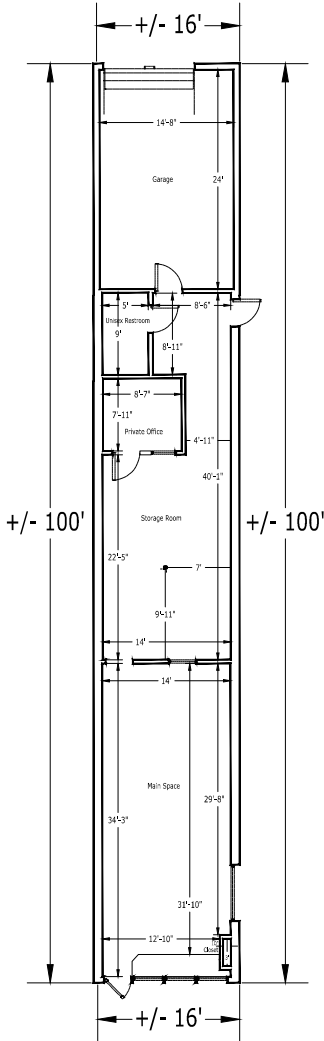
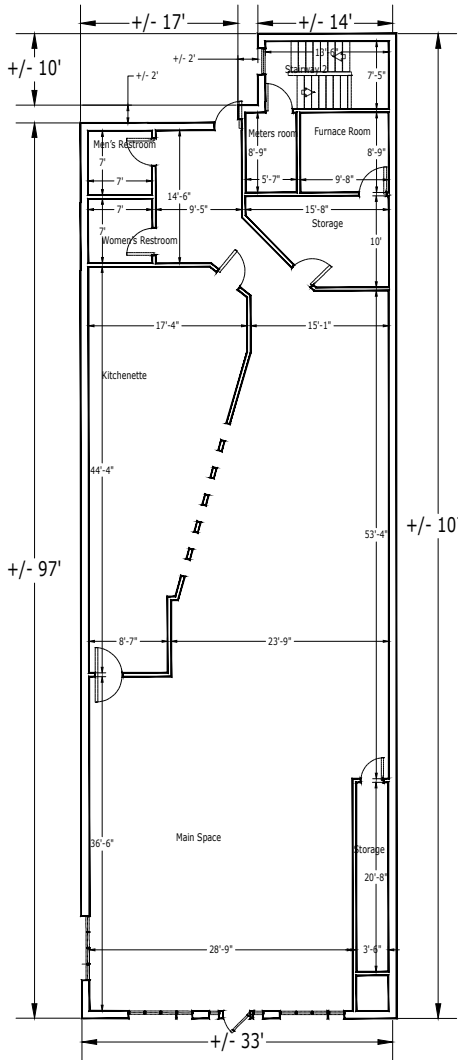
REAR

Unit 11

Unit 13

Unit 14

Unit 15



FRONT

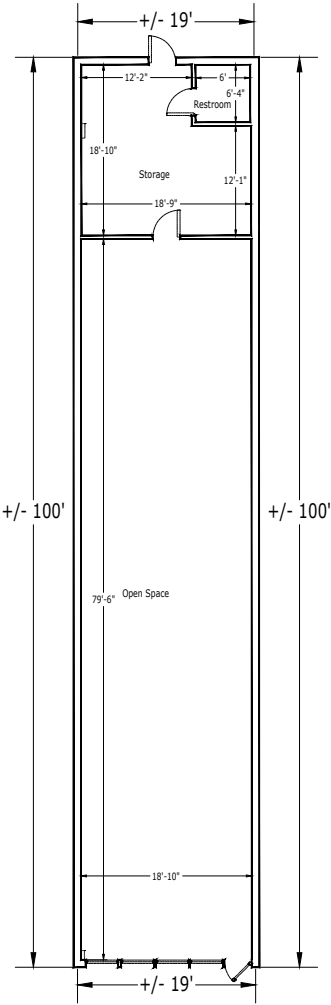
NOT TO SCALE

Floor Plans

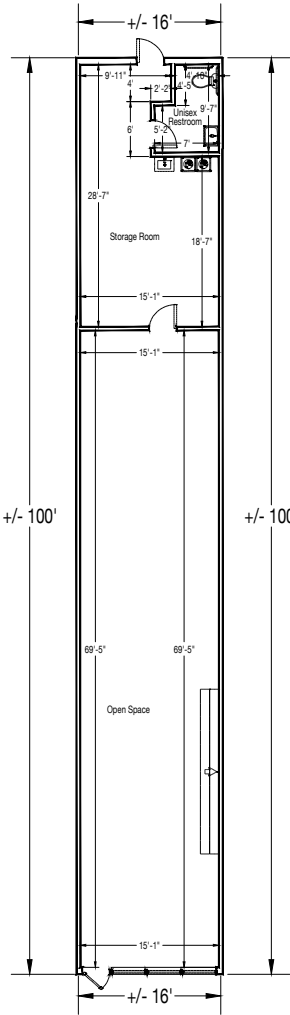
The information and images contained herein are from sources deemed reliable. However, J.C.BAR Properties, Inc. makes no representation whatsoever as to their accuracy or authenticity. Images shown may be modified for illustrative purposes. Images may be out-of-date and not current.

REAR

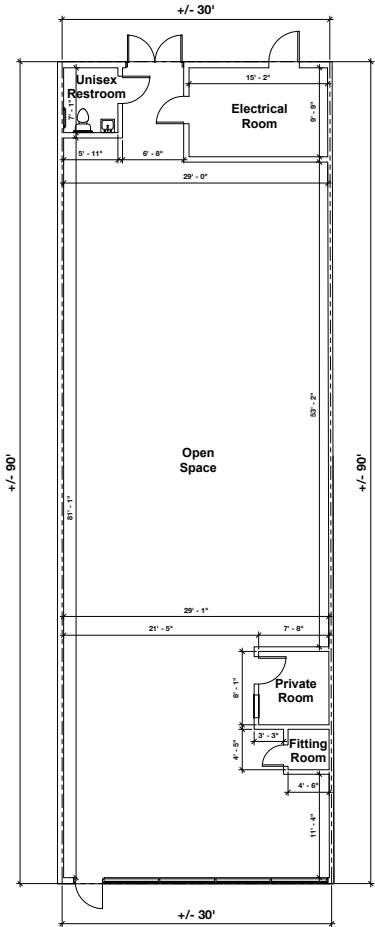
Unit 17



Unit 25



Unit 34

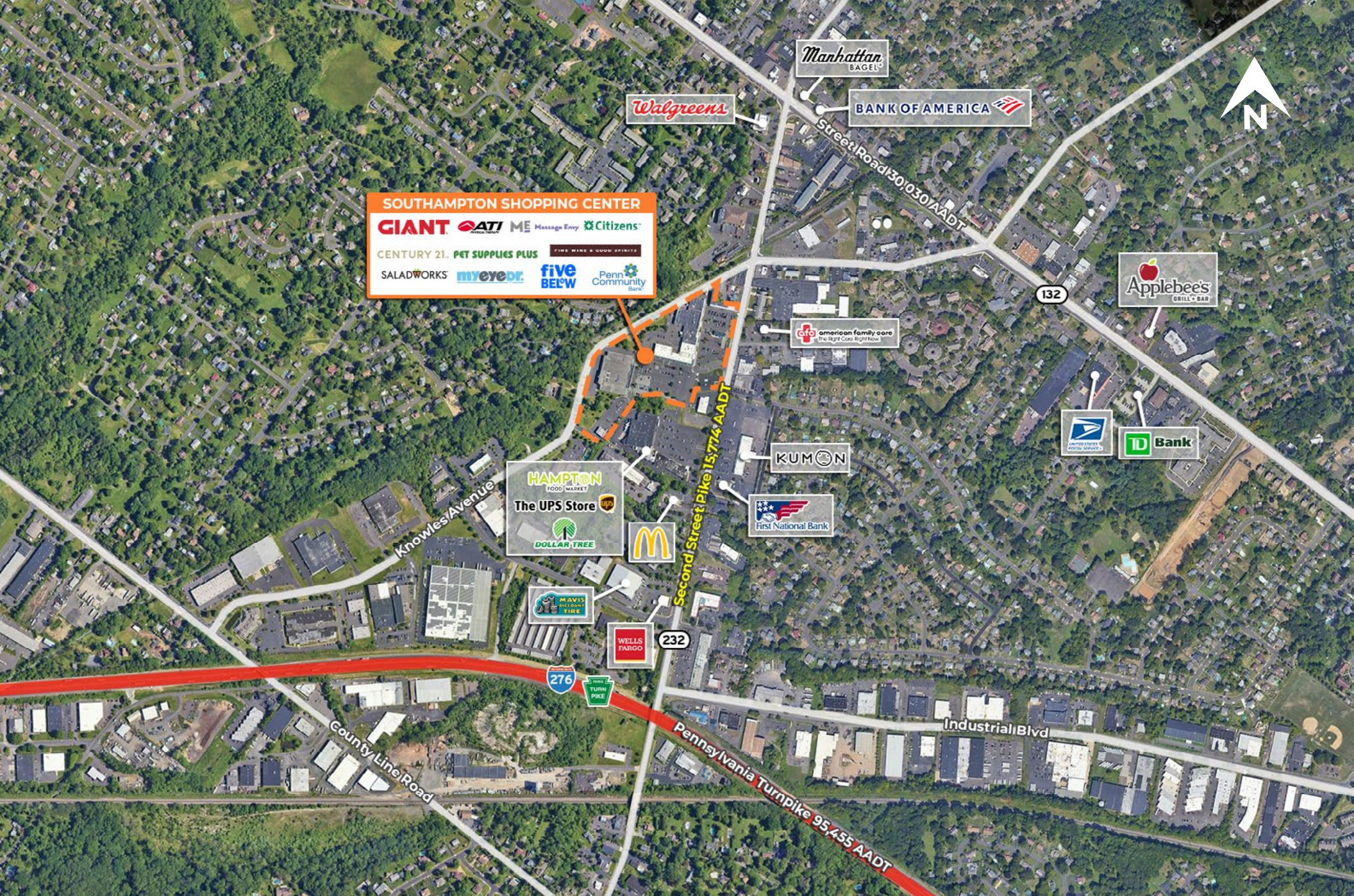


FRONT

NOT TO SCALE

Floor Plans





Local Aerial



Market Aerial