

# Southampton Shopping Center

466 Second Street Pike - Southampton, PA 18966

±600 - 3,500 SF Available For Lease



## Questions? Contact Us.

**Greg Jones**

GJones@jcbarprop.com  
p. 610-234-6491  
c. 484-948-5217

**Brett Michaels**

BMichaels@jcbarprop.com  
p. 610-234-6491  
c. 443-243-7891

**Colin Hodgson**

CHodgson@jcbarprop.com  
p. 610-234-6491  
c. 302-588-8179

# Southampton Shopping Center

466 Second Street Pike - Southampton, PA 18966

±600 - 3,500 SF Available For Lease

## Highlights

- Giant anchored shopping center with fantastic co-tenancy
- Conveniently located half mile from Pennsylvania Turnpike (95,455 AADT)
- Floor plans ranging from 1,300 - 3,060 SF available
- 62,164 residents within 3 miles
- GLA: 150,847

**JOIN**

**GIANT** ME Message Envy  
**PET SUPPLIES PLUS**  
TOUS les JOURS

FINE WINE & GOOD SPIRITS

myevedr

**five**  
BELW

SALADWORKS

Citizens

Penn Community Bank

### Demographic

1 Mile

3 Miles

5 Miles

Population	7,356	62,164	213,482
Households	2,977	23,974	83,417
Avg HH Income	\$128,706	\$152,379	\$142,394
Daytime Employees	8,145	30,059	110,377

Map data ©2024 Google



**±150,847 SF**  
Gross Leasable Area



**±16.75 AC**  
Land Size Area



**86%**  
Occupancy



**821**  
Parking Spaces

**Questions? Contact Us.**

**Greg Jones**

GJones@jcbarprop.com  
p. 610-234-6491  
c. 484-948-5217

**Brett Michaels**

BMichaels@jcbarprop.com  
p. 610-234-6491  
c. 443-243-7891

**Colin Hodgson**

CHodgson@jcbarprop.com  
p. 610-234-6491  
c. 302-588-8179

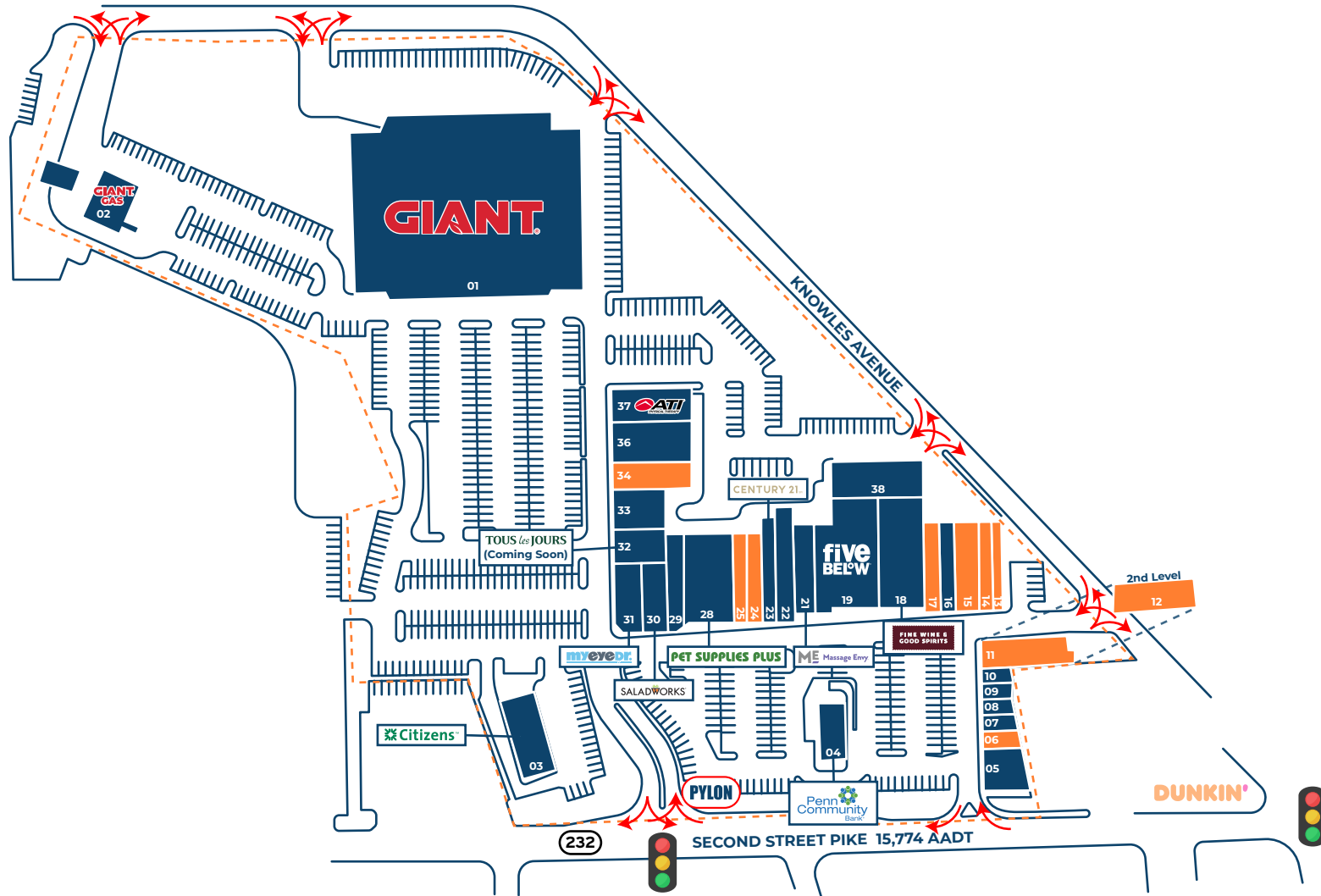


# Southampton Shopping Center

466 Second Street Pike - Southampton, PA 18966



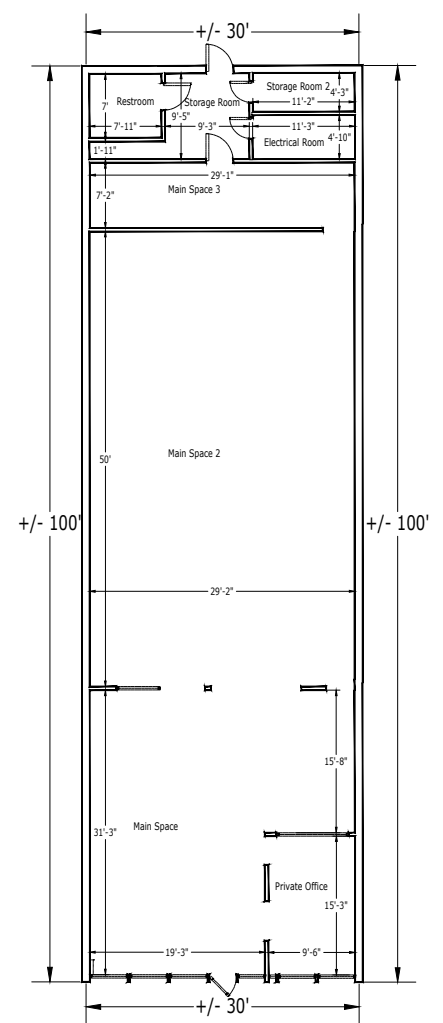
Unit	Tenant	Square Footage
01	Giant	±59,892 SF
02	Giant Gas	±3,100 SF
03	Citizen's Bank	±3,666 SF
04	Penn Community Bank	±2,415 SF
05	Robin Hood Restaurant	±2,690 SF
06	AVAILABLE	±600 SF
07	AC Rehab Products	±600 SF
08	American News and Tobacco	±600 SF
09	Threading the City	±600 SF
10	Barber 777 Shop	±600 SF
11	AVAILABLE	±3,060 SF
12	AVAILABLE	±3,500 SF
13	AVAILABLE	±1,600 SF
14	AVAILABLE	±1,500 SF
15	AVAILABLE	±3,000 SF
16	Osaka Sushi Bar	±2,000 SF
17	AVAILABLE	±2,000 SF
18	Wine and Spirits	±6,920 SF
19	Five Below	±8,941 SF
21	Massage Envy	±3,000 SF
22	2nd Street Bagels	±2,000 SF
23	Century 21	±2,160 SF
24	AVAILABLE	±2,000 SF
25	AVAILABLE	±1,600 SF
28	Pet Supplies Plus	±6,000 SF
29	Flowersome	±2,000 SF
30	Saladworks	±2,800 SF
31	MyEyeDr.	±2,800 SF
32	Tous Les Jour	±1,300 SF
33	Tip N Toe Spa	±1,400 SF
34	AVAILABLE	±2,700 SF
36	House of Pho and Taiko Bistro	±5,400 SF
37	ATI Physical Therapy	±3,150 SF
38	Quaint Oak Bank	±5,263 SF
Total SF		±150,847 SF



## Site Plan

# FRONT

## Unit 15

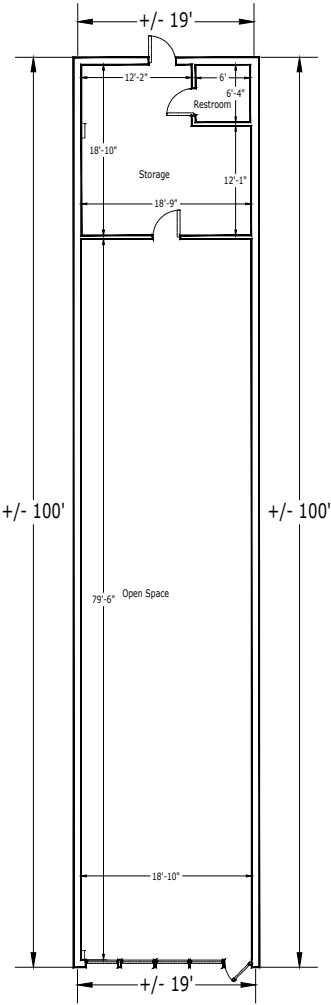


**NOT TO SCALE**

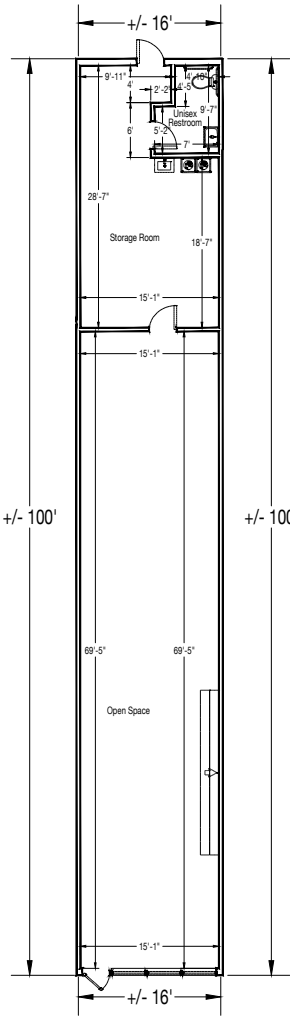
# Floor Plans

REAR

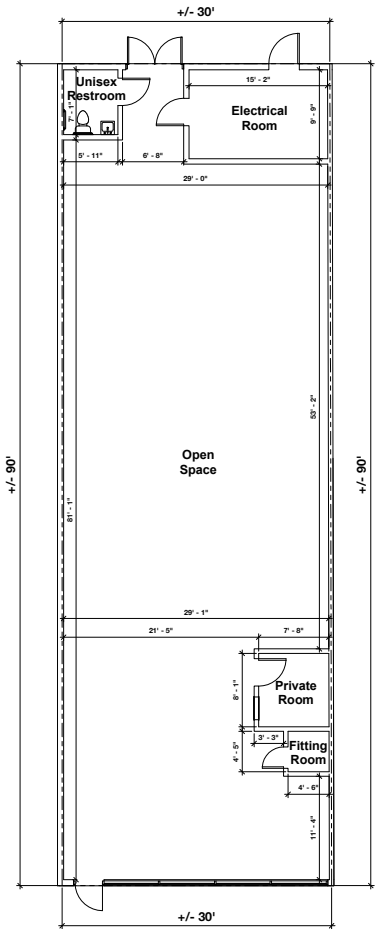
Unit 17



Unit 25



Unit 34



FRONT

NOT TO SCALE

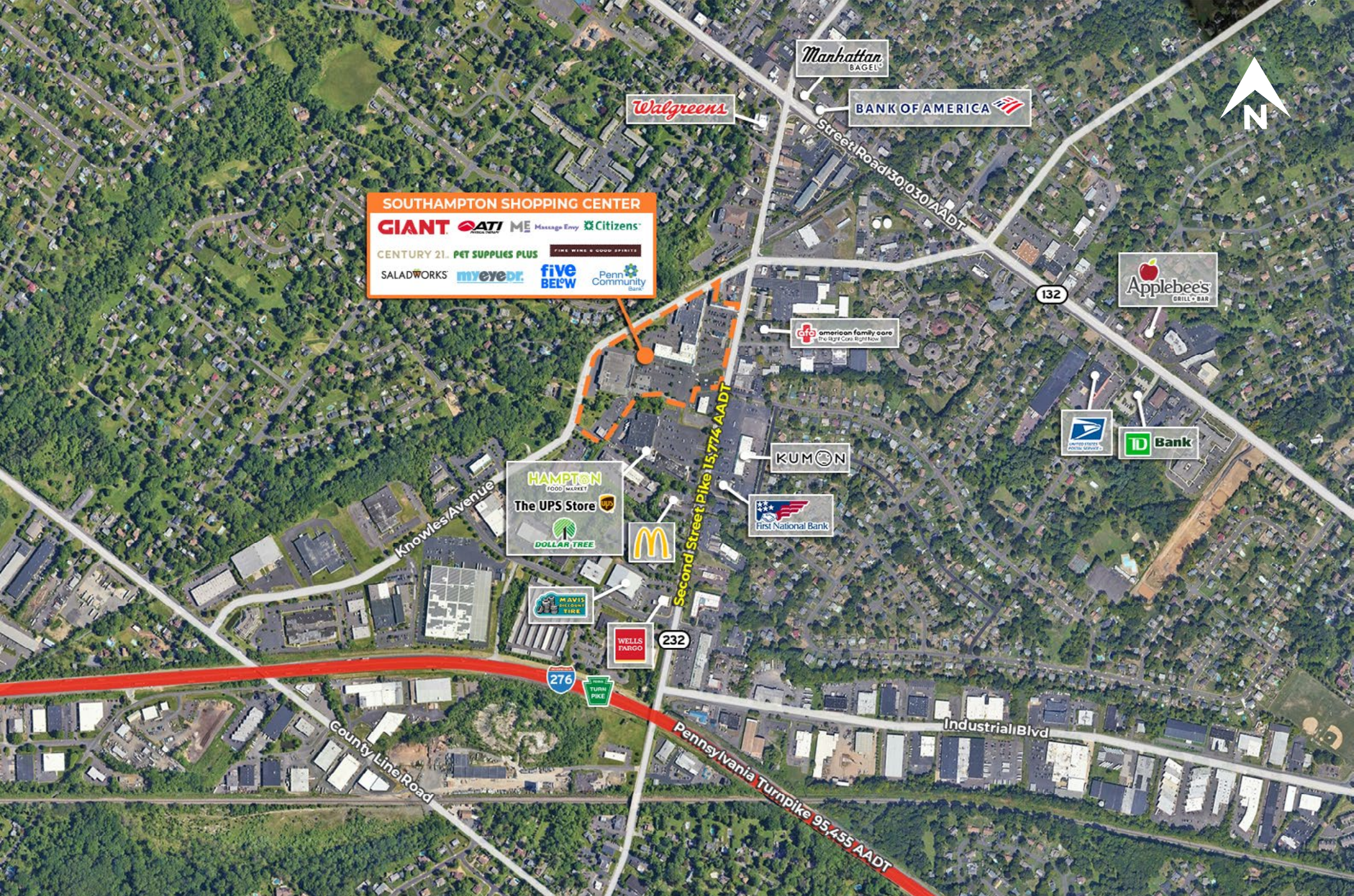
Floor Plans





# Zoom Aerial





# Local Aerial





# Market Aerial