

Ridgeview Plaza

2633 Annapolis Road - Hanover, MD 20176

Fully Leased!



Corporate Office
224 St. Charles Way, Suite 290
York, PA 17402
Conshohocken Office
100 Front Street, Suite 560
West Conshohocken, PA 19428

Questions? Contact Us.



Melissa Lippe
MLippe@jcbarprop.com
p. 610-206-3319
c. 215-264-6964

Ridgeview Plaza

2633 Annapolis Road - Hanover, MD 20176

Fully Leased!

Highlights

- Food Lion anchored community center with $\pm 168,306$ SF GLA
- strong housing growth, presently under construction, coming directly across the street
- Average household incomes within five-miles are in excess of \$117,132
- Annapolis Rd: 34,579 AADT

JOIN



The UPS Store



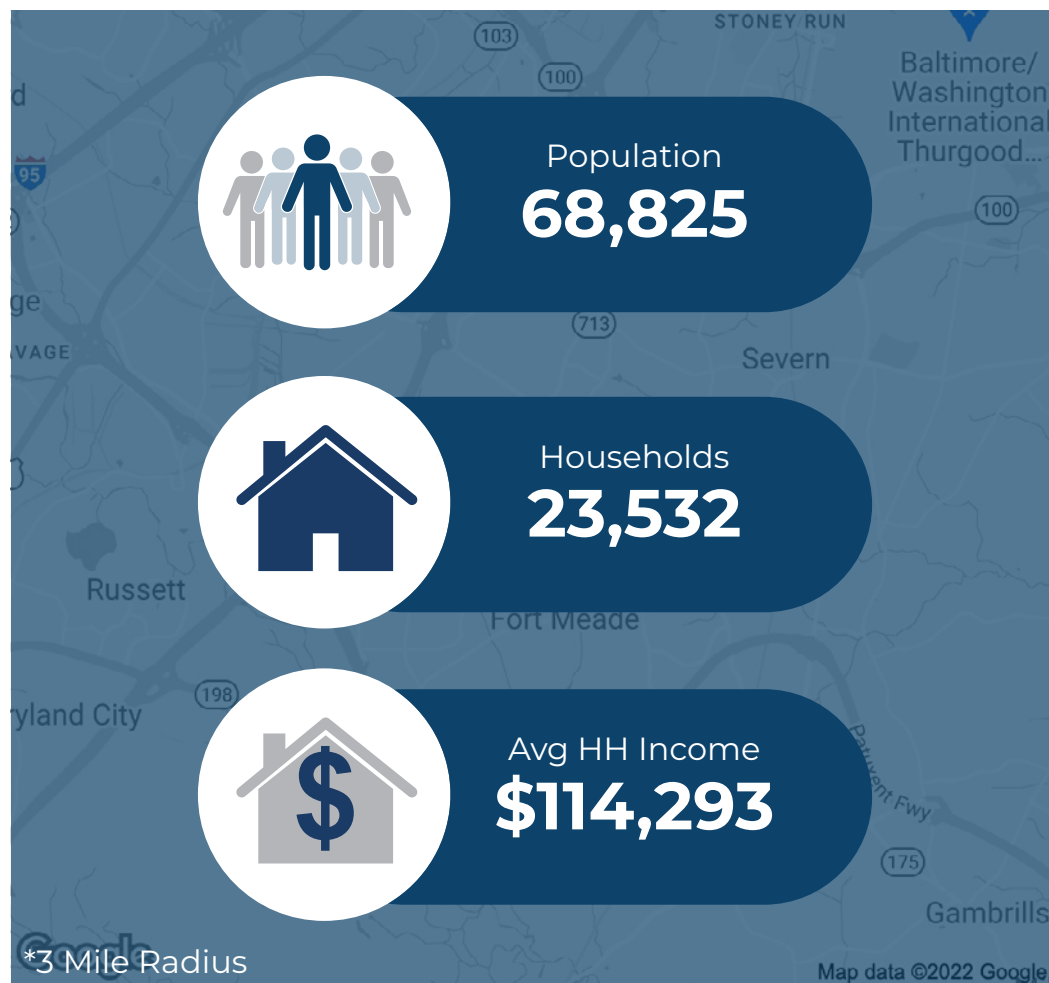
DOLLAR TREE

Demographic	1 Mile	3 Miles	5 Miles
Population	8,504	68,825	157,724
Households	3,189	23,532	56,236
Avg HH Income	\$113,625	\$114,293	\$117,132
Daytime Employees	12,497	66,000	136,158



Corporate Office
224 St. Charles Way, Suite 290
York, PA 17402

Conshohocken Office
100 Front Street, Suite 560
West Conshohocken, PA 19428



Questions? Contact Us.



Melissa Lippe

MLippe@jcbarprop.com

p. 610-206-3319

c. 215-264-6964

Ridgeview Plaza

2633 Annapolis Road - Hanover, MD 20176

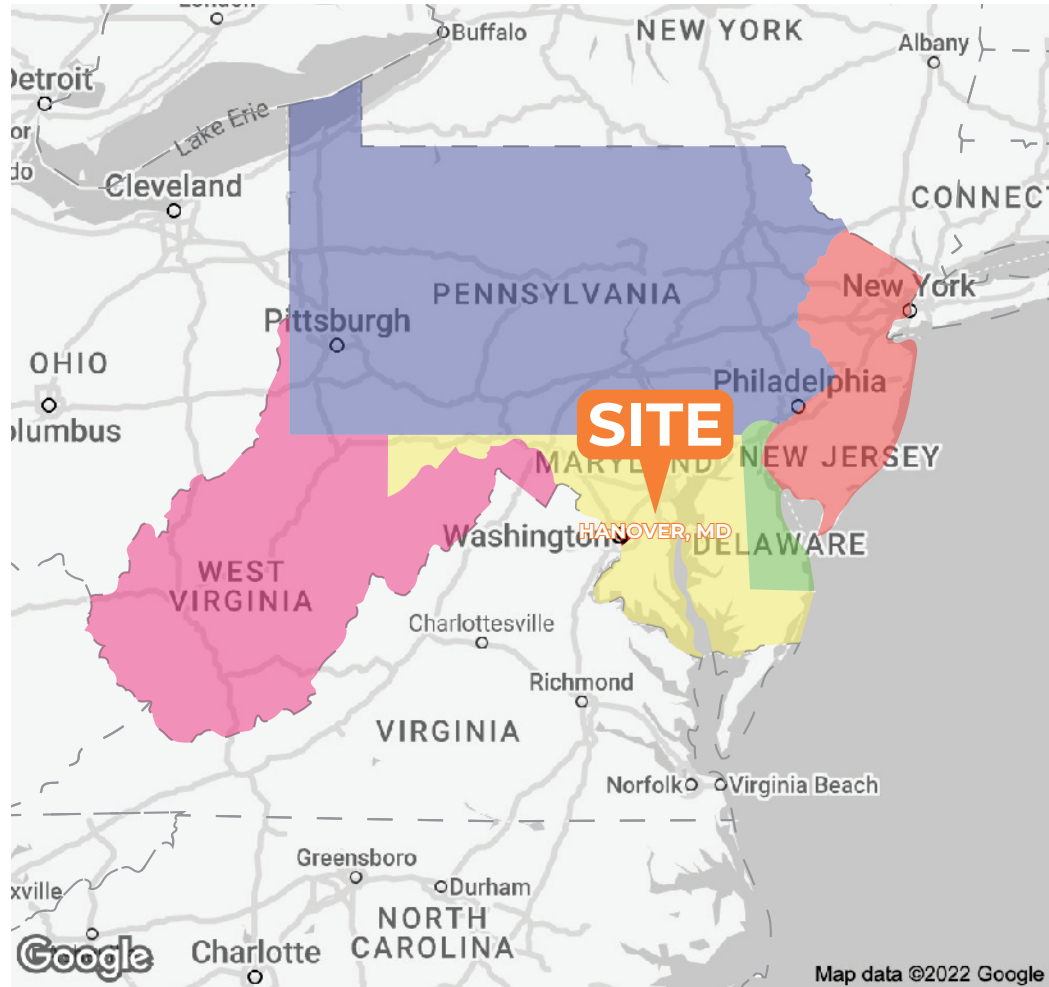
Fully Leased!

About Ridgeview Plaza

Ridgeview Plaza is ±168,306 SF on ±22.9 acre, anchored by Food Lion. The retail shopping center centrally located in Hanover, MD, just off the Baltimore-Washington Expressway, on Annapolis Road. The center is co-anchored by Big Lots, Dollar Tree and Planet Fitness.

Within five-miles there are 136,158 daytime employees and the average household incomes are in excess of \$122,408 -- with a steadily growing population vdue to new construction.

Also the area isvf home to Fort Meade, Maryland's largest employer with over 57,300 military and civilian personnel.



Questions? Contact Us.



Corporate Office
224 St. Charles Way, Suite 290
York, PA 17402

Conshohocken Office
100 Front Street, Suite 560
West Conshohocken, PA 19428

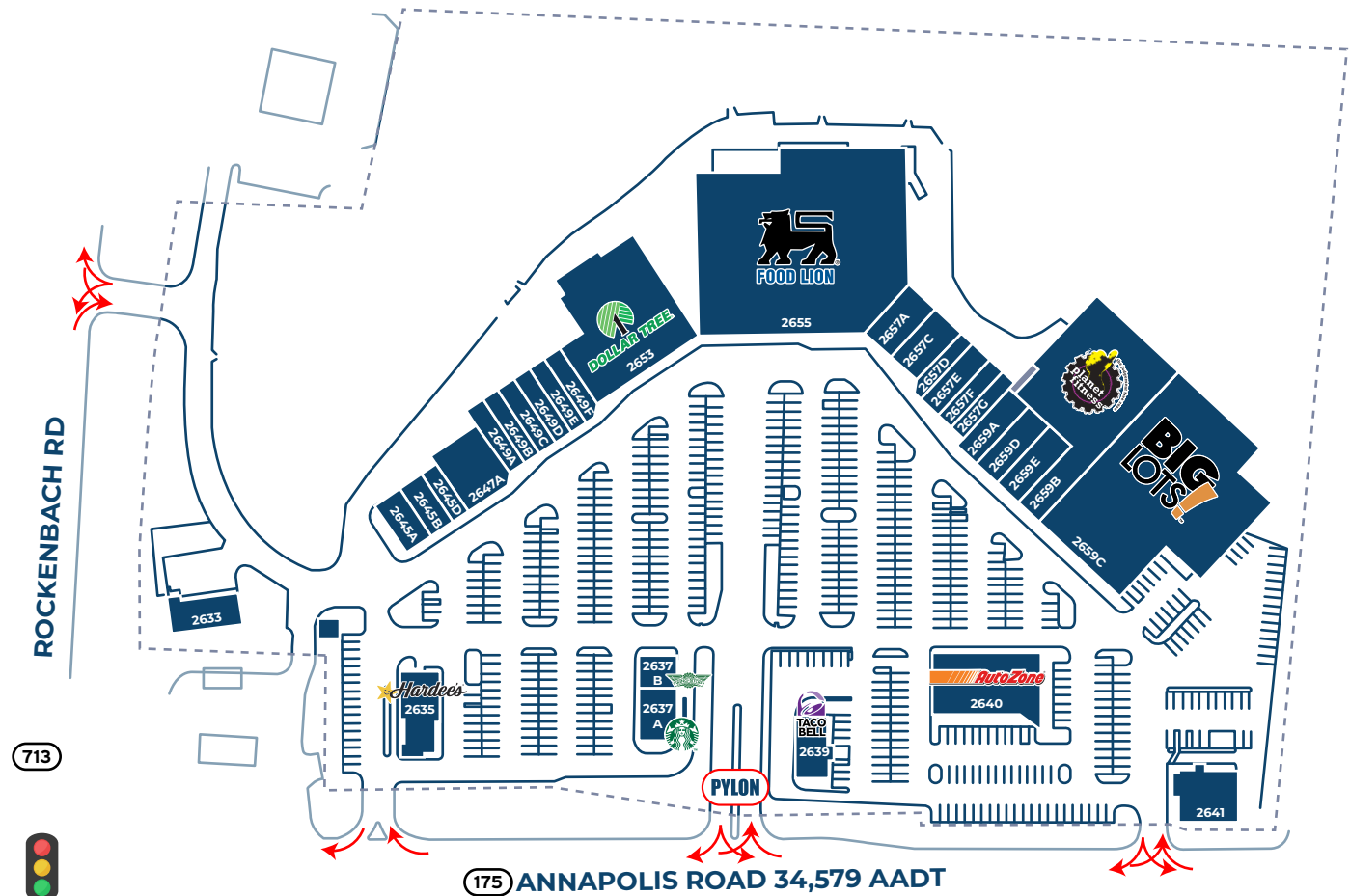
Melissa Lippe
MLippe@jcbarprop.com
p. 610-206-3319
c. 215-264-6964

Ridgeview Plaza

2633 Annapolis Rd, Hanover, MD 20176



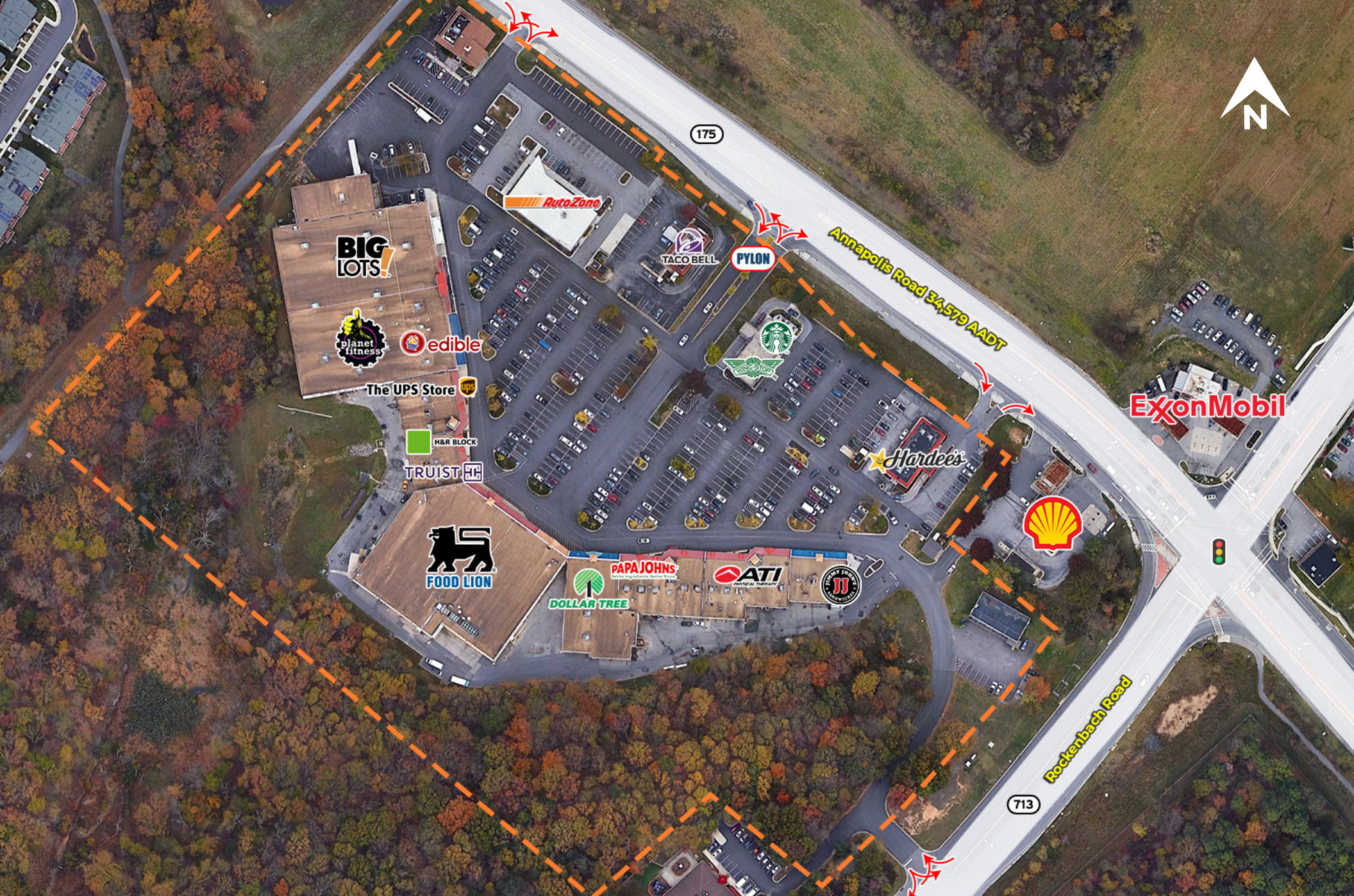
Unit	Tenant	Square Footage
2659A	Wine & Spirits	±2,075 SF
2655	Food Lion	±41,953 SF
2633	Car Doc	±2,450 SF
2635	Hardees	±3,600 SF
2637A	Starbucks	±2,000 SF
2637BC	Wingstop	±1,600 SF
2639	Taco Bell	±2,200 SF
2640	AutoZone	±7,380 SF
2641	Lima Chicken	±3,573 SF
2645A	Jimmy Johns	±1,200 SF
2645B	ATI Physical Therapy	±2,400 SF
2645D	HIGHREZIN	±1,200 SF
2647A	Mei's Asian Bistro	±4,200 SF
2649A	Taste of Asia Louie	±1,200 SF
2649B	Ci Su Café	±1,845 SF
2649C	Grace's Barbershop	±1,600 SF
2649D	Ridgeview Dental Care	±1,600 SF
2649E	Five Star Nutrition	±1,600 SF
2649F	Papa John's	±1,500 SF
2651B	Pho One-O Restaurant and Lounge	±4,200 SF
2653	Dollar Tree	±11,450 SF
2657A	Ledo's Pizza	±2,800 SF
2657C	Truist Bank	±2,450 SF
2657D	H&R Block	±1,550 SF
2657E	Ridgeview Beauty and Barber Supply	±2,000 SF
2657F	Rosy Nails	±1,600 SF
2657G	The UPS Store	±1,600 SF
2659B	Planet Fitness	±19,943 SF
2659C	Big Lots	±31,851 SF
2659D	Edible Arrangements	±1,281 SF
2659E	Southern Blues	±2,200 SF



Corporate Office
224 St. Charles Way, Suite 290
York, PA 17402

Conshohocken Office
100 Front Street, Suite 560
West Conshohocken, PA 19428

Site Plan



Corporate Office
224 St. Charles Way, Suite 290
York, PA 17402
Conshohocken Office
100 Front Street, Suite 560
West Conshohocken, PA 19428

Local Aerial

The information and images contained herein are from sources deemed reliable. However, J.C.BAR Properties, Inc. makes no representation whatsoever as to their accuracy or authenticity. Images shown may be modified for illustrative purposes. Images may be out-of-date and not current.

