

# Penn House Commons

325 N 10th Street - Lewisburg, PA 17837

±1,600 SF 2nd Generation Restaurant Available For Lease



**Questions? Contact Us.**

**Melissa Lippe**

MLippe@jcbarprop.com  
p. 610-206-3319  
c. 215-264-6964

**Rob V. Gothier, III**

RG3@jcbarprop.com  
p. 717-761-7801  
c. 717-712-4601

# Penn House Commons

**325 N 10th Street - Lewisburg, PA 17837**

±1,600 SF 2nd Generation Restaurant Available For Lease

## Highlights

- Lewisburg is home to Bucknell University with a student population of approximately 3,695 students
- Fully Leased Shopping Center!
- 2,421 AADT on St Mary St
- 11,263 AADT W Market St
- Just off of N Derr Drive (Route 15) with 11,984 AADT
- Major Area Employers: Evangelical Community Hospital 839 employees and 131 beds
- GLA ±78,138 SF

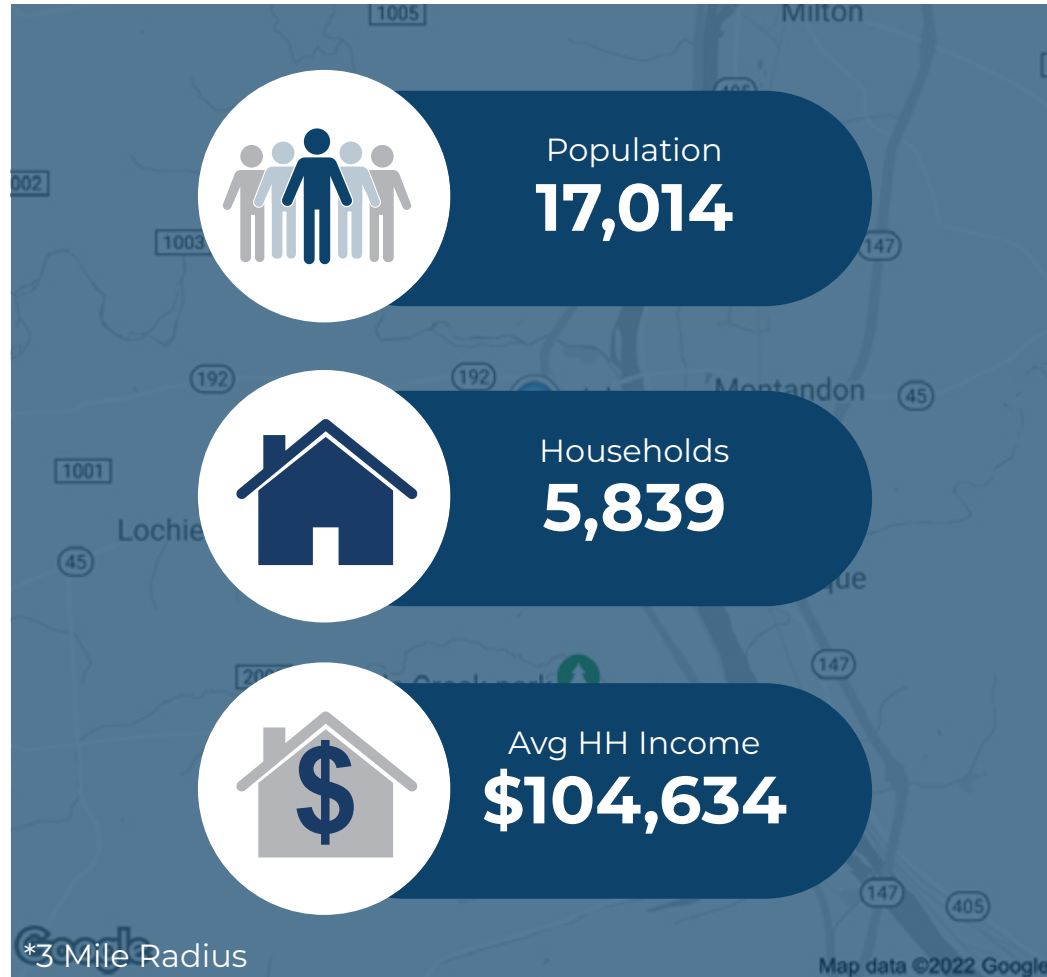
**JOIN**

**GIANT.**  
The UPS Store 

**Great Clips**  
**T Mobile**

 **CVS**  
pharmacy®

Demographic	1 Mile	3 Miles	5 Miles
Population	9,326	17,014	28,654
Households	2,919	5,839	10,643
Avg HH Income	\$97,403	\$104,634	\$90,740
Daytime Employees	5,836	13,156	16,706



**Questions? Contact Us.**

**Melissa Lippe**  
MLippe@jcbarprop.com  
p. 610-206-3319  
c. 215-264-6964

**Rob V. Gothier, III**  
RG3@jcbarprop.com  
p. 717-761-7801  
c. 717-712-4601



# Penn House Commons

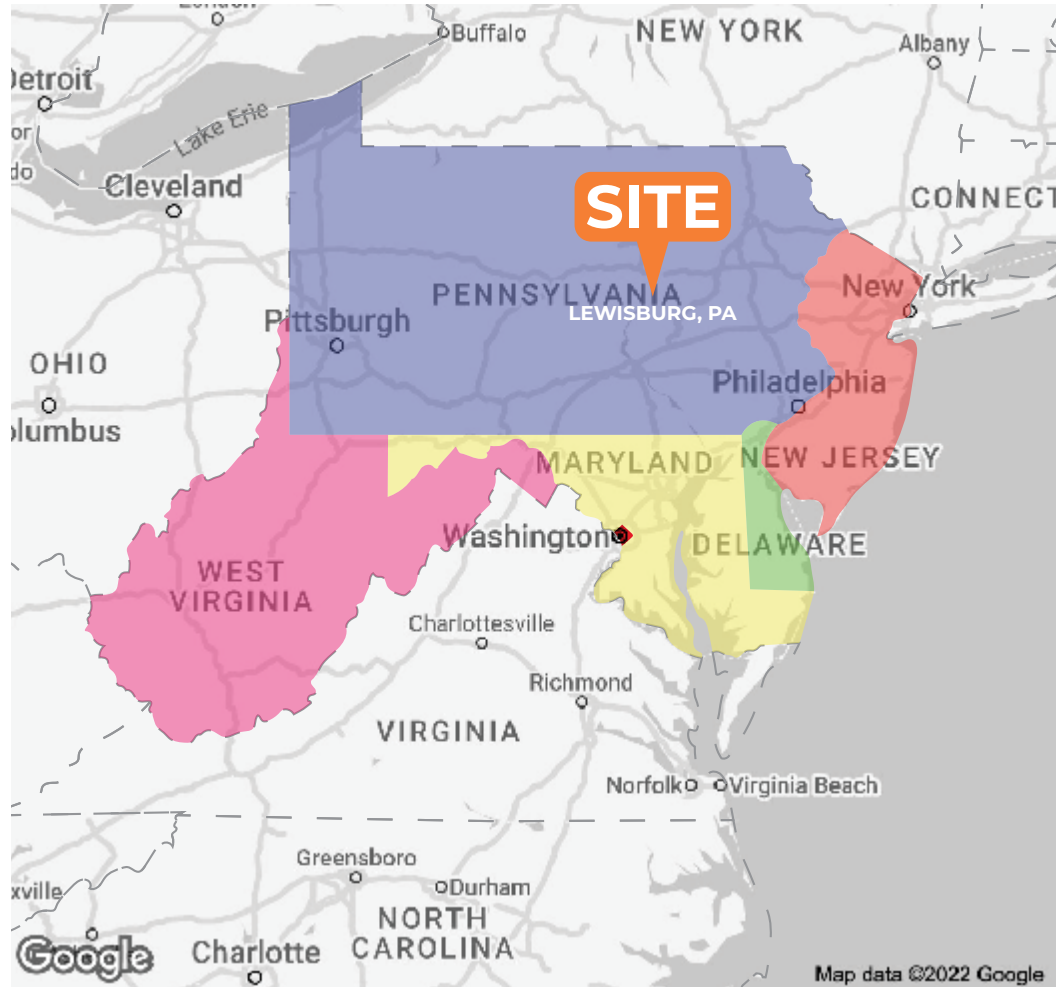
**325 N 10th Street - Lewisburg, PA 17837**

±1,600 SF 2nd Generation Restaurant Available For Lease

## About Penn House Commons

Penn House Commons, anchored by Giant is an exciting retail center in the heart of Lewisburg, PA. The property is located minutes from Bucknell University Campus with 3,352 students admitted in 2022. Major employers in the area are Bucknell University, Evangelical Community Hospital, the Federal Government, Wal-Mart, and the Ritz-Craft Corporation.

The property is just off of Route 15 (11,984 daily travelers). Within three miles, there are approximately 13,000 day time employees.



## Questions? Contact Us.

**Melissa Lippe**

MLippe@jcbarprop.com  
p. 610-206-3319  
c. 215-264-6964

**Rob V. Gothier, III**

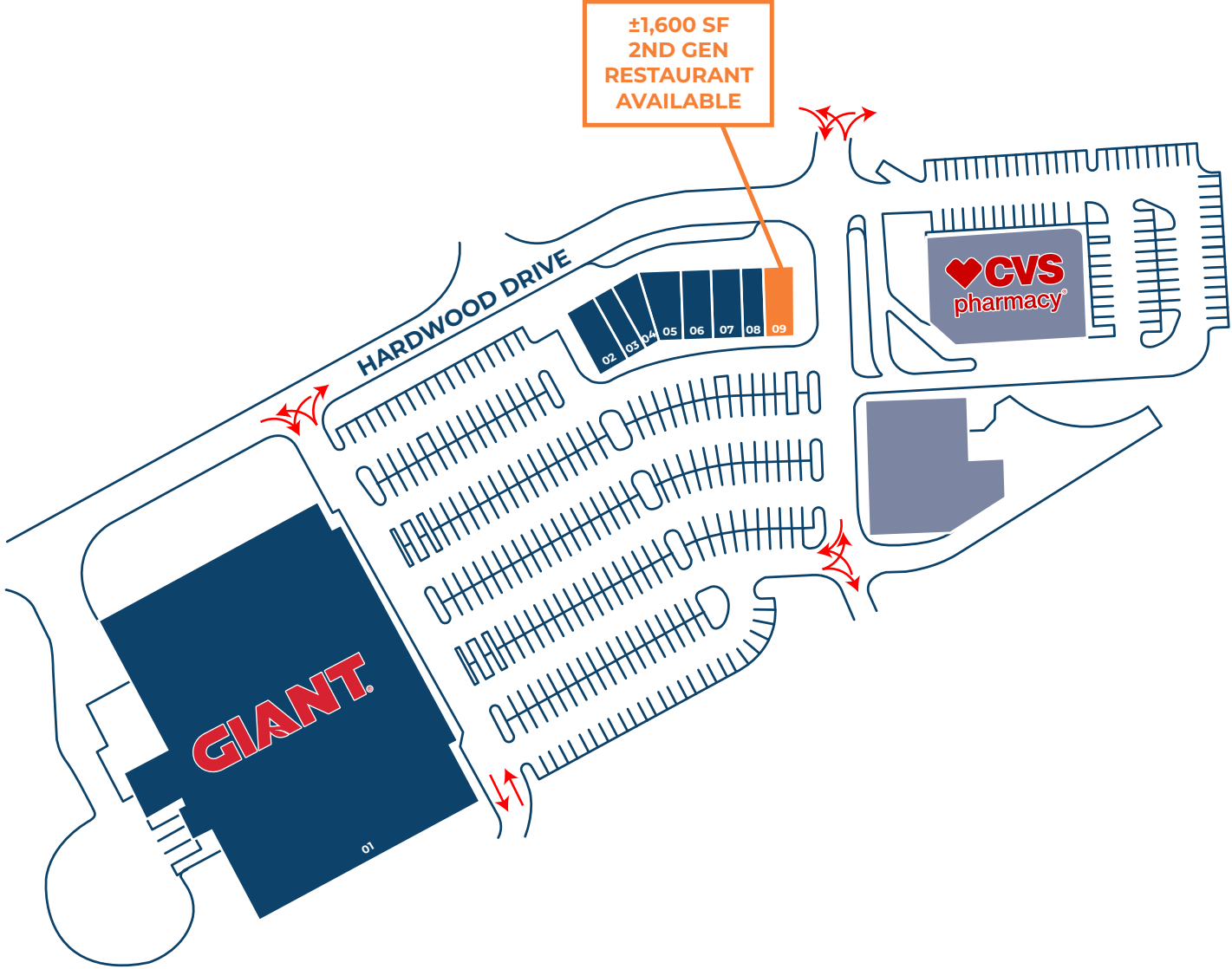
RG3@jcbarprop.com  
p. 717-761-7801  
c. 717-712-4601

# Penn House Commons

325 N 10th St, Lewisburg, PA 17837



Unit	Tenant	Square Footage
01	Giant	±66,603 SF
02	Tonino's Pizza	±1,600 SF
03	Great Clips	±1,141 SF
04	Sun Nails & Spa	±1,282 SF
05	The UPS Store	±1,515 SF
06	The Laundry Room of Lewisburg	±1,600 SF
07	TEU Real Estate	±1,600 SF
08	T-Mobile	±1,200 SF
09	AVAILABLE	±1,600 SF



## Site Plan



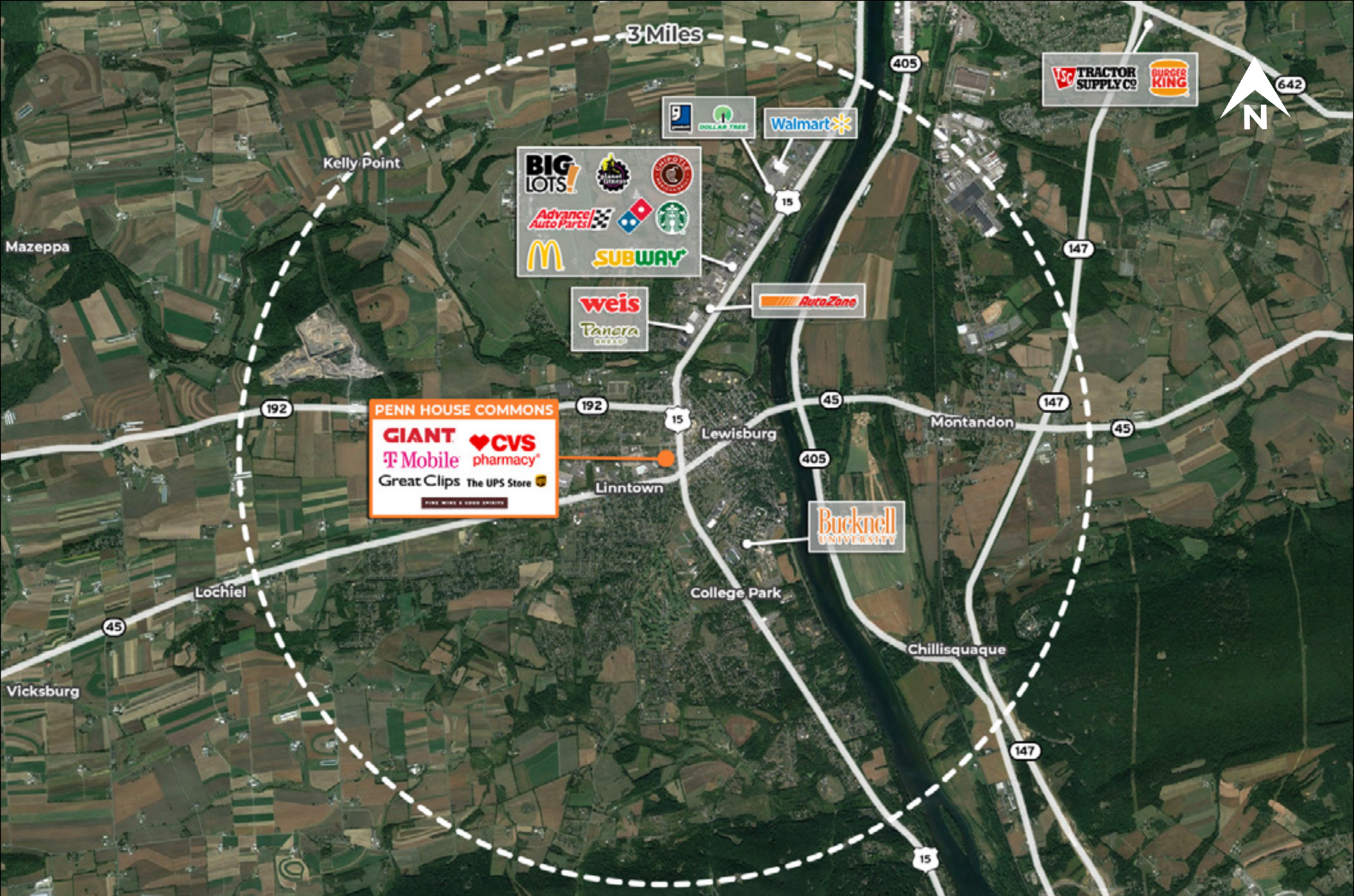
# Suite 09 Photos





# Local Aerial





# Market Aerial