

W Street Road & Norristown Road

Warminster, PA 18974

Development Site For Sale



Questions? Contact Us.

Greg Jones

GJones@jcbarprop.com

p. 610-234-6491

c. 484-948-5217

W Street Road & Norristown Road

Warminster, PA 18974

Development Site For Sale

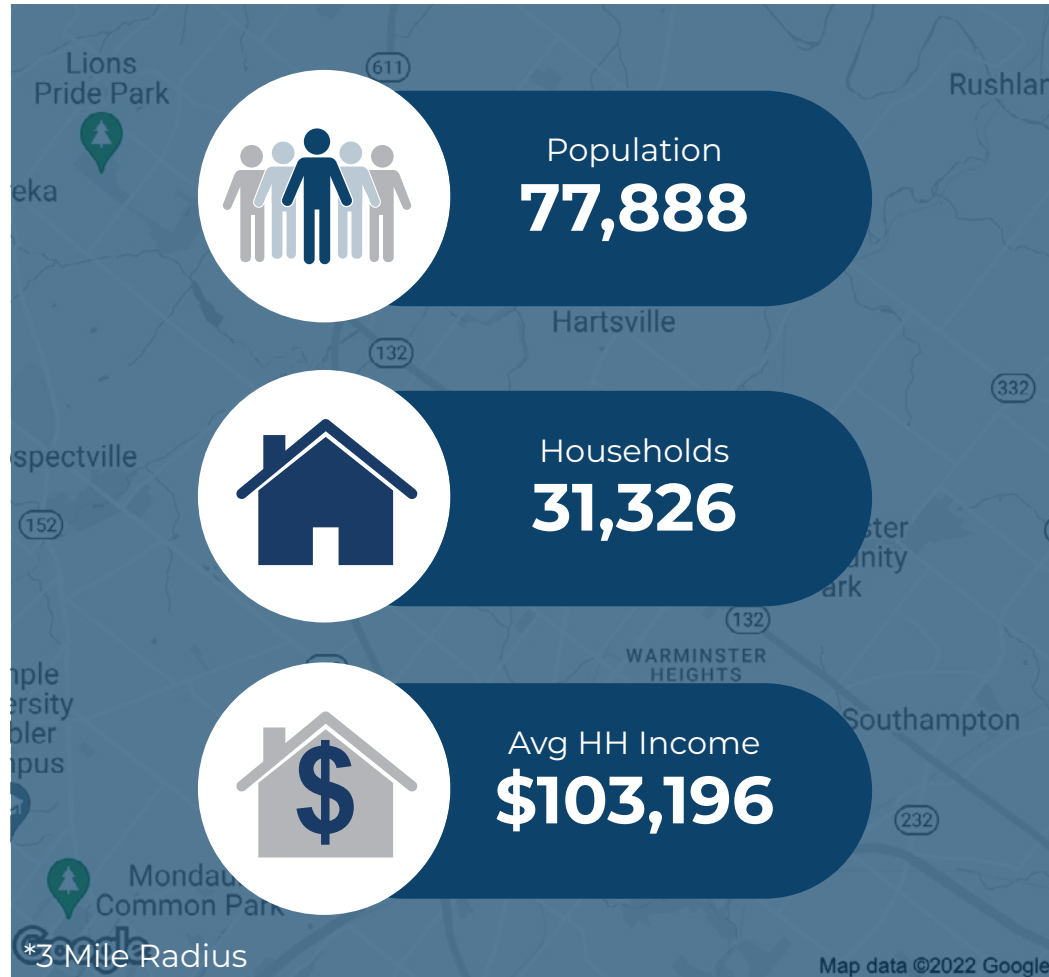
Highlights

- High profile retail development in Warminster, Bucks County, PA, with pad sites available and excellent visibility to Street Road with 27,758 AADT
- Approved/improved pad and sites
- All utilities in close proximity to the site
- Great location for medical or financial buildings
- Commercial development

JOIN THESE MAJOR LOCAL AREA RETAILERS



Demographic	1 Mile	3 Miles	5 Miles
Population	10,305	77,888	162,504
Households	3,871	31,326	62,234
Avg HH Income	\$107,615	\$103,196	\$124,875
Daytime Employees	3,401	42,063	98,499



Questions? Contact Us.

Greg Jones

GJones@jcbarprop.com

p. 610-234-6491

c. 484-948-5217

W Street Road & Norristown Road

Warminster, PA 18974

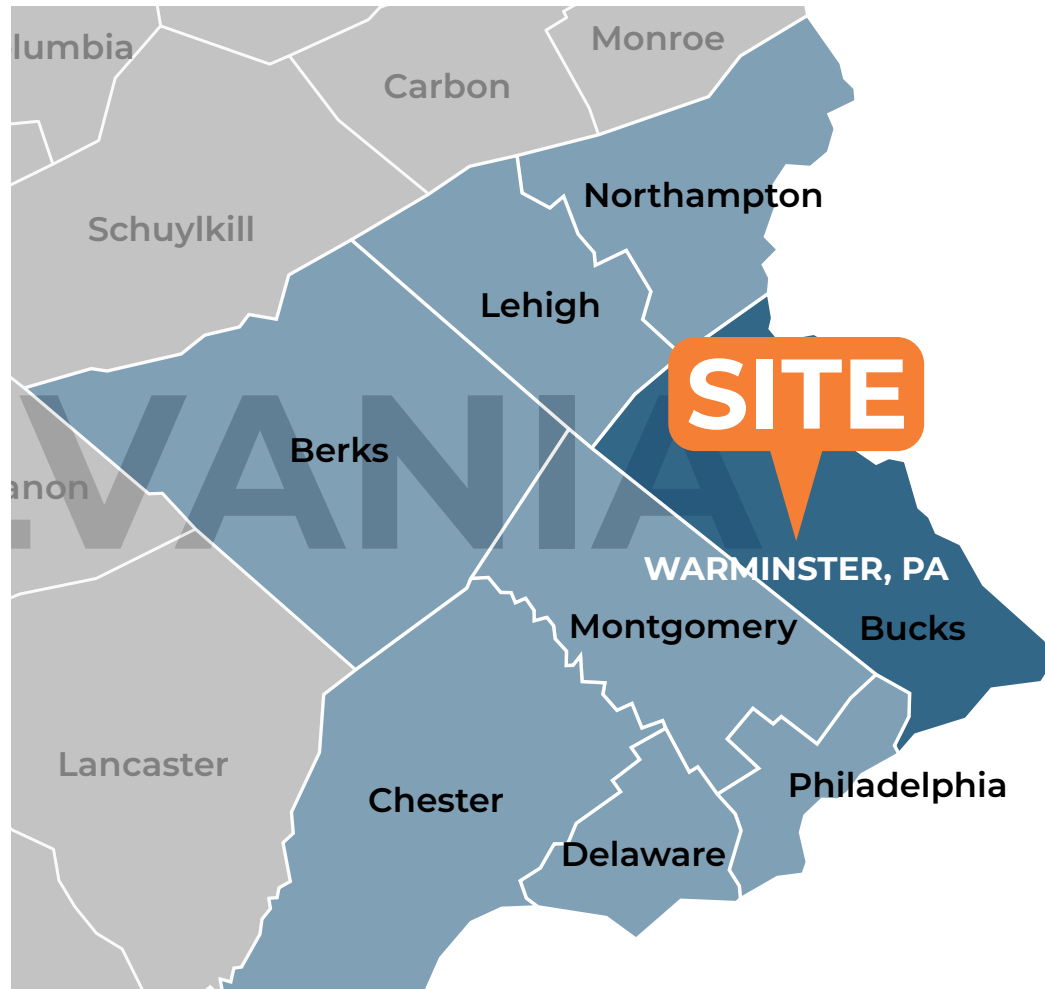
Development Site For Sale

About Warminster

Warminster is a regional-suburban market within Bucks County, PA and is 13.7 miles North of Philadelphia.

Within three miles, the population is 77,888 residents with an average household income of \$103,196. In addition, there are over 42,000 daytime employees within the three-mile radius. The top employers in the area include Giant Food Stores, Central Bucks School District, Saint Mary Medical Center, Walmart, and Grand View Health.

Important roads include Route 132 (Street Road), which runs through the township between Warrington and Southampton; Route 263 (York Road), which runs through the township between Hatboro and Jamison; and Route 332 (Jacksonville Road), which runs through the township between Hatboro and Ivyland. Other important roads include County Line Road, which runs along the Southwestern border with Montgomery County and Bristol Road, which runs along the Northeastern border.



Questions? Contact Us.

Greg Jones

GJones@jcbarprop.com

p. 610-234-6491

c. 484-948-5217

FOR SALE

PROPOSED MEDICAL / DENTAL OFFICE
BUILDING AREA = ±5,000 S.F.
35 PARKING SPACES
(20 PARKING SPACES REQUIRED)

PROPOSED GROCERY STORE
BUILDING AREA = ±26,800 S.F.
PROTO P6 T16
111 PARKING SPACES
(108 PARKING SPACES REQUIRED)

PROPOSED BANK
BUILDING AREA = 2,535 S.F.
10 PARKING SPACES
(10 PARKING SPACES REQUIRED)

PROPOSED
RETAIL
BUILDING

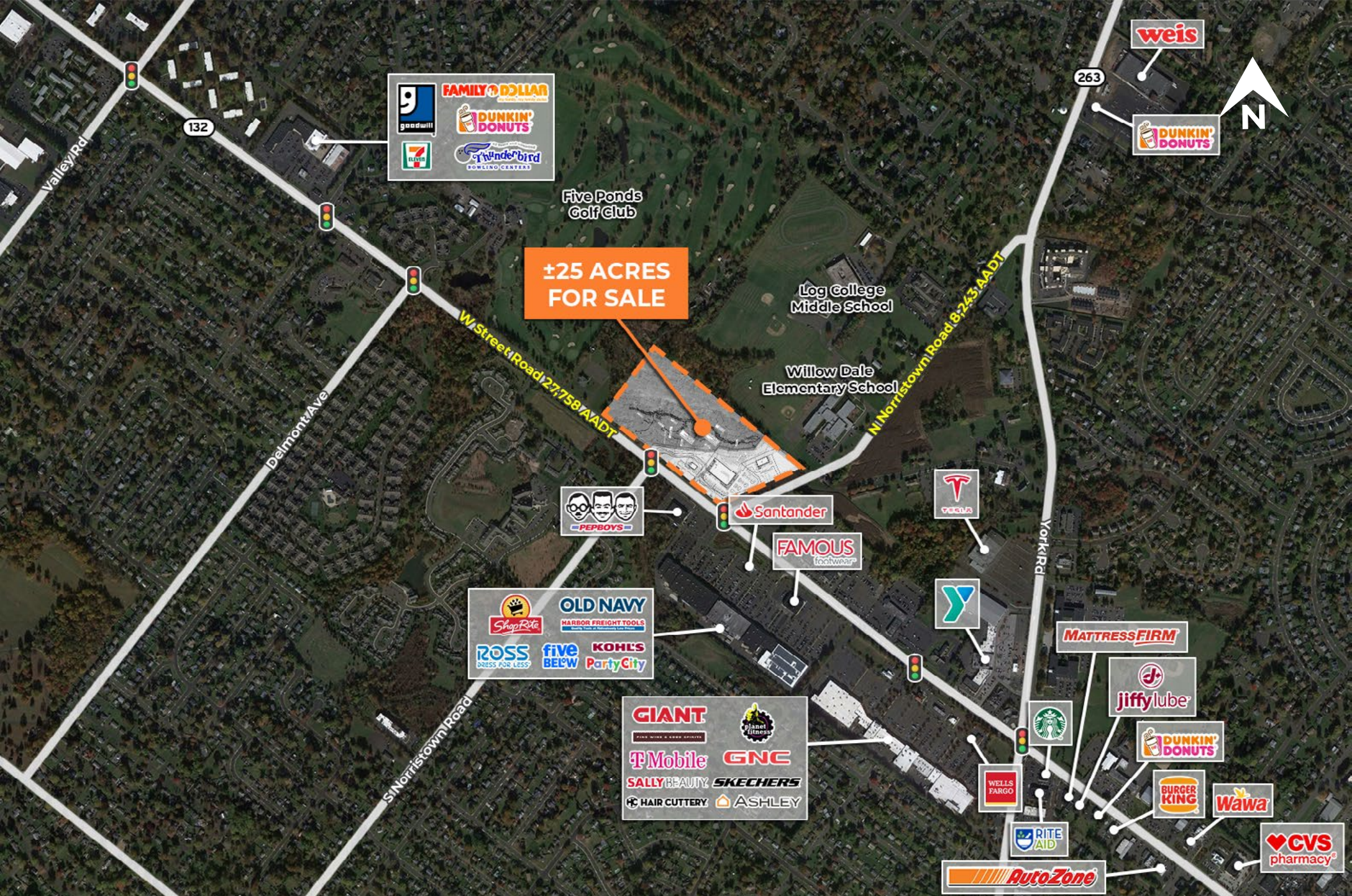
PROPOSED PAD C

PROPOSED PAD A

N Norristown Road 8,243 AADT

W Street Road 27,758 AADT

Site Plan



**±25 ACRES
FOR SALE**

Local Aerial

The information and images contained herein are from sources deemed reliable. However, J.C.BAR Properties, Inc. makes no representation whatsoever as to their accuracy or authenticity. Images shown may be modified for illustrative purposes. Images may be out-of-date and not current.



Market Aerial