

Oxford Flats

528-40 W Oxford Street - Philadelphia, PA 19122

±2,552 SF Storefront Available For Lease

±2,552 SF AVAILABLE



Corporate Office
224 St. Charles Way, Suite 290
York, PA 17402
Conshohocken Office
100 Front Street, Suite 560
West Conshohocken, PA 19428

Questions? Contact Us.



Bakari White
BWhite@jcbarprop.com
p. 610-206-3319
c. 215-495-9756

Greg Jones
GJones@jcbarprop.com
p. 610-234-6491
c. 484-948-5217

Oxford Flats

528-40 W Oxford Street - Philadelphia, PA 19122

±2,552 SF Storefront Available For Lease

Highlights

- ±1,830 SF of corner retail space plus ±722 SF basement
- “L”-shaped space allowing for a variety of layout options
- ADA accessible
- Potential covered parking available
- Street Frontages:
 - ±50’ on Randolph St
 - ±43’ on Oxford St
- Oxford Flats is a 30-unit new construction building at the corner of Randolph & Oxford Streets. The retail space has prominent frontage on both streets with expansive storefront windows
- Zoning: IRMX
- Ludlow/Yorktown epitomizes the perfect marriage and blend of vintage and modern Philadelphia. The neighborhood has an abundance of vintage shops, galleries, nightlife, bars & breweries, and vibrant new restaurants. Only minutes away from Fishtown & Northern Liberties

Demographic	0.5 Mile	1 Mile	1.5 Miles
Population	17,528	72,195	144,515
Households	6,834	27,248	57,740
Avg HH Income	\$91,947	\$99,091	\$95,956
Daytime Employees	5,531	21,588	49,120



Questions? Contact Us.



Corporate Office
224 St. Charles Way, Suite 290
York, PA 17402

Conshohocken Office
100 Front Street, Suite 560
West Conshohocken, PA 19428

Bakari White
BWhite@jcbarprop.com
p. 610-206-3319
c. 215-495-9756

Greg Jones
GJones@jcbarprop.com
p. 610-234-6491
c. 484-948-5217



W Oxford Street

N 6th Street

W Randolph Street

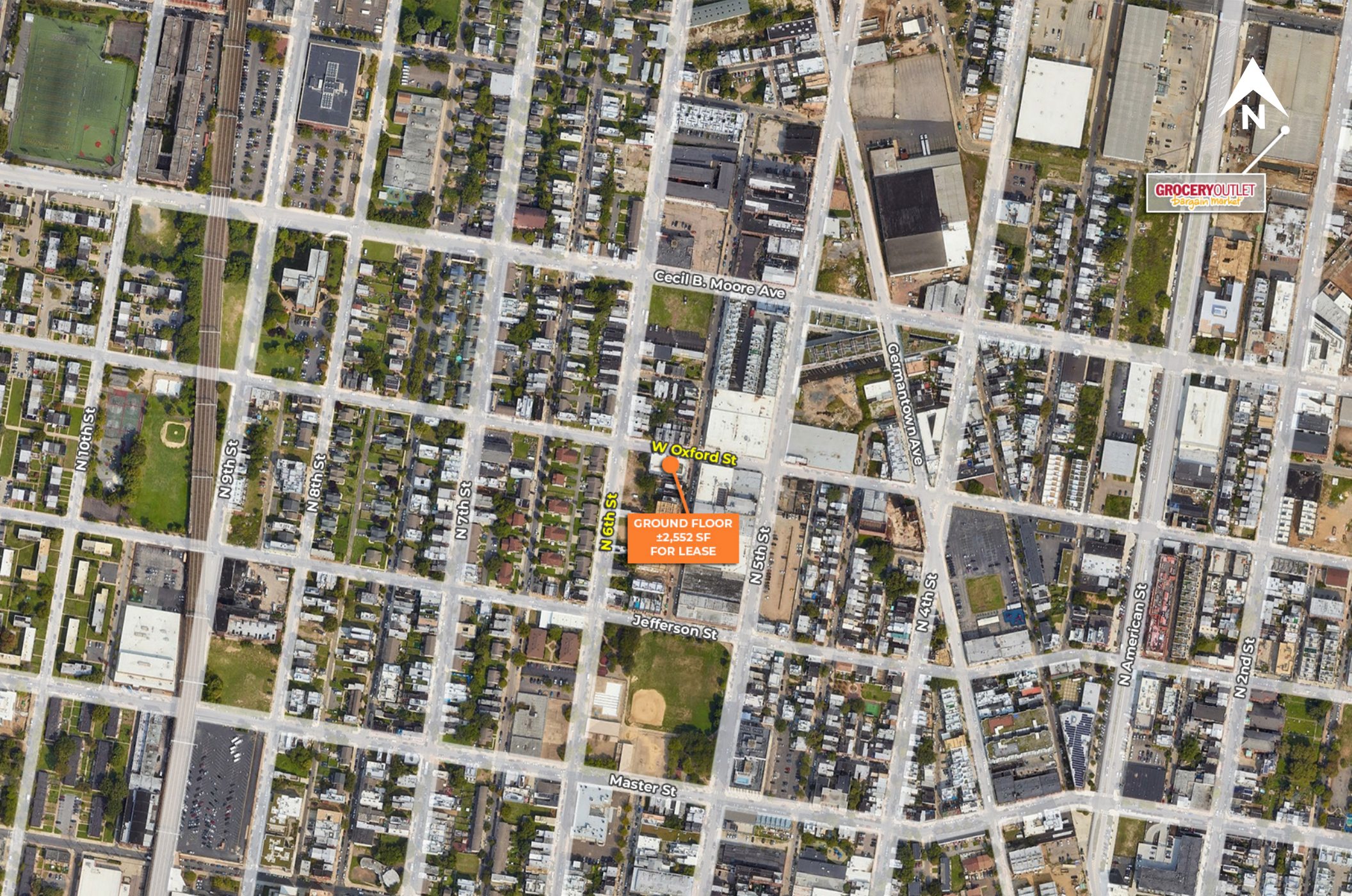
GROUND FLOOR
±2,552 SF
FOR LEASE



Corporate Office
224 St. Charles Way, Suite 290
York, PA 17402
Conshohocken Office
100 Front Street, Suite 560
West Conshohocken, PA 19428

Zoom Aerial

The information and images contained herein are from sources deemed reliable. However, J.C.BAR Properties, Inc. makes no representation whatsoever as to their accuracy or authenticity. Images shown may be modified for illustrative purposes. Images may be out-of-date and not current.



GROCERY OUTLET
Bargain Market

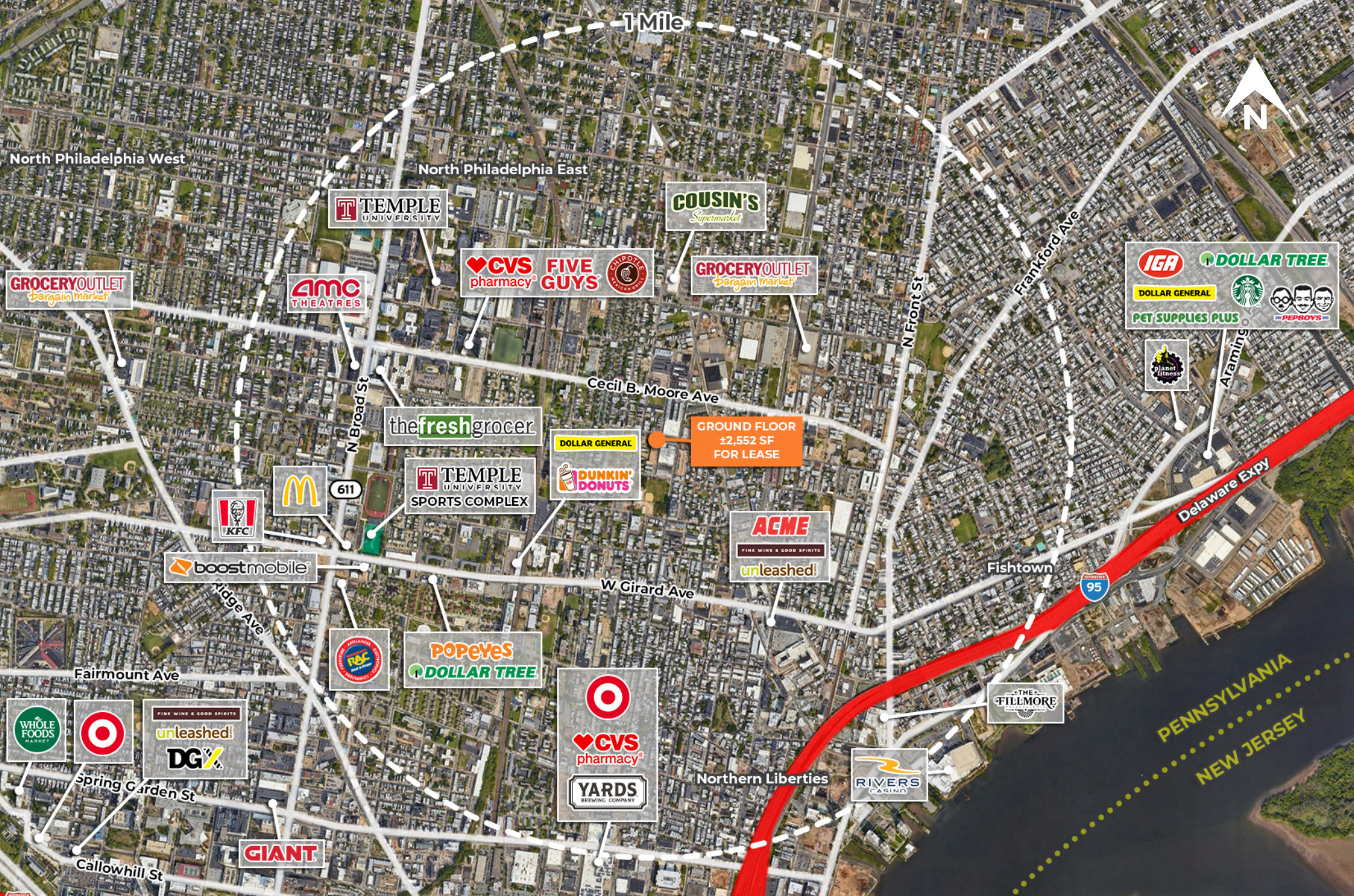
GROUND FLOOR
±2,552 SF
FOR LEASE



Corporate Office
224 St. Charles Way, Suite 290
York, PA 17402
Conshohocken Office
100 Front Street, Suite 560
West Conshohocken, PA 19428

Local Aerial

The information and images contained herein are from sources deemed reliable. However, J.C.BAR Properties, Inc. makes no representation whatsoever as to their accuracy or authenticity. Images shown may be modified for illustrative purposes. Images may be out-of-date and not current.



1 Mile



COUSIN'S
Supermarket

CVS pharmacy **FIVE GUYS**

GROCERYOUTLET
Bargain Market

IGA **DOLLAR TREE**
DOLLAR GENERAL **Starbucks**
PET SUPPLIES PLUS **PEPBOYS**

TEMPLE UNIVERSITY

AMC THEATRES

GROCERYOUTLET
Bargain Market

DOLLAR GENERAL
DUNKIN' DONUTS

GROUND FLOOR
±2,552 SF
FOR LEASE

thefreshgrocer

TEMPLE UNIVERSITY
SPORTS COMPLEX

KFC

McDonald's

boostmobile

ACME
FINE WINE & GOOD SPIRITS
unleashed!

W Girard Ave

REBEL

POPEYES
DOLLAR TREE

THE FILLMORE

WHOLE FOODS MARKET **Target**

unleashed!
DG

Target
CVS pharmacy
YARDS BREWING COMPANY

Northern Liberties

RIVERS CASINO

GIANT

PENNSYLVANIA
NEW JERSEY



Corporate Office
224 St. Charles Way, Suite 290
York, PA 17402

Conshohocken Office
100 Front Street, Suite 560
West Conshohocken, PA 19428

Market Aerial

The information and images contained herein are from sources deemed reliable. However, J.C.BAR Properties, Inc. makes no representation whatsoever as to their accuracy or authenticity. Images shown may be modified for illustrative purposes. Images may be out-of-date and not current.



Corporate Office
224 St. Charles Way, Suite 290
York, PA 17402
Conshohocken Office
100 Front Street, Suite 560
West Conshohocken, PA 19428

Site Photos