

Old Courthouse Square

1291-1357 Edwin Miller Boulevard - Martinsburg, WV 25404

±1,200-1,600 SF Available for Lease



Questions? Contact Us.

Melissa Lippe

MLippe@jcbarprop.com
p. 610-206-3319
c. 215-264-6964

Rob V. Gothier, III

RG3@jcbarprop.com
p. 717-761-7801
c. 717-712-4601

Old Courthouse Square

1291-1357 Edwin Miller Boulevard - Martinsburg, WV 25404

±1,200-1,600 SF Available for Lease

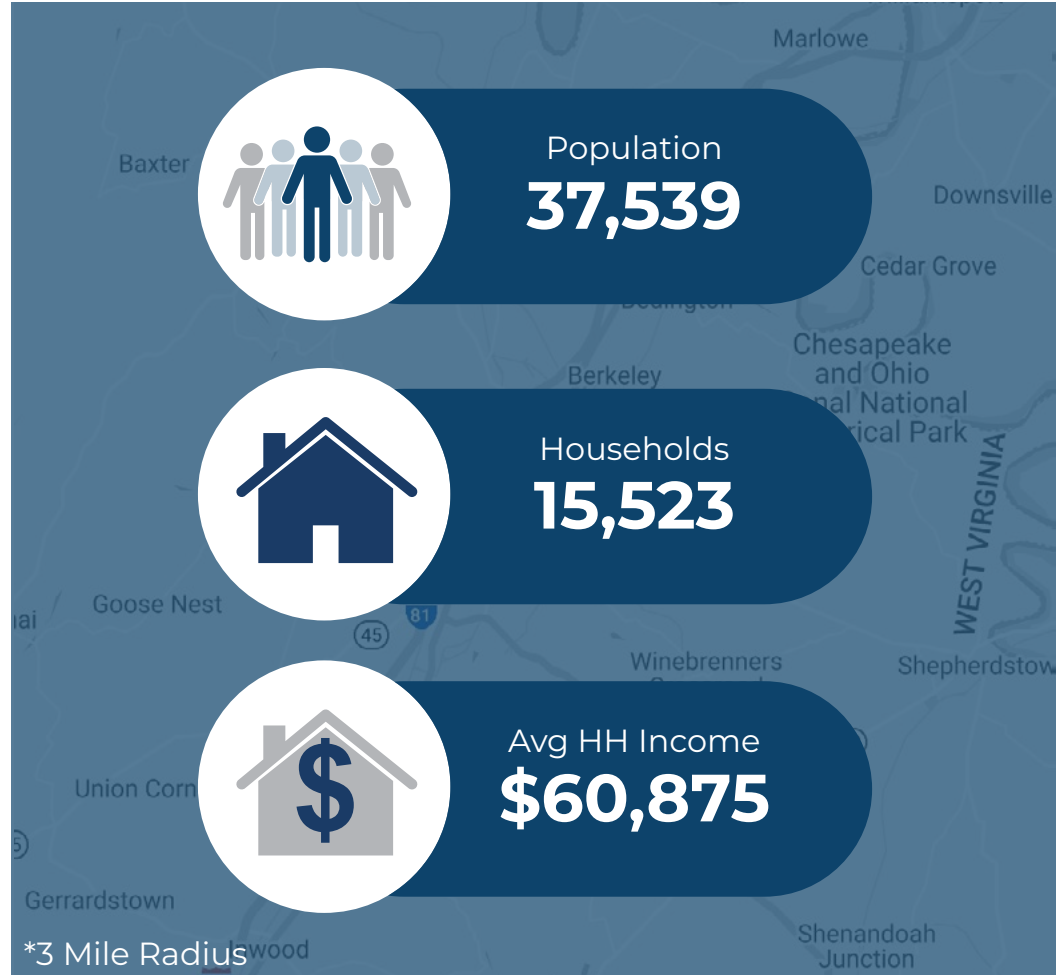
Highlights

- Well-positioned Martin's anchored center located at heavily trafficked intersection, Edwin Miller Blvd. and N Raleigh Street
- Great co-tenancy with USPS, Autozone, Family Dollar, Subway, Taco Bell, and Pizza Hut.
- Edwin-Miller Boulevard: 12,777 AADT
- Great proximity to Interstate 81
- GLA ±202,360 SF

JOIN



Demographic	1 Mile	3 Miles	5 Miles
Population	7,884	37,539	60,755
Households	3,406	15,523	24,512
Avg HH Income	\$60,989	\$60,875	\$69,188
Daytime Employees	3,669	14,326	19,276



Questions? Contact Us.

Melissa Lippe
 MLippe@jcbarprop.com
 p. 610-206-3319
 c. 215-264-6964

Rob V. Gothier, III
 RG3@jcbarprop.com
 p. 717-761-7801
 c. 717-712-4601

Old Courthouse Square

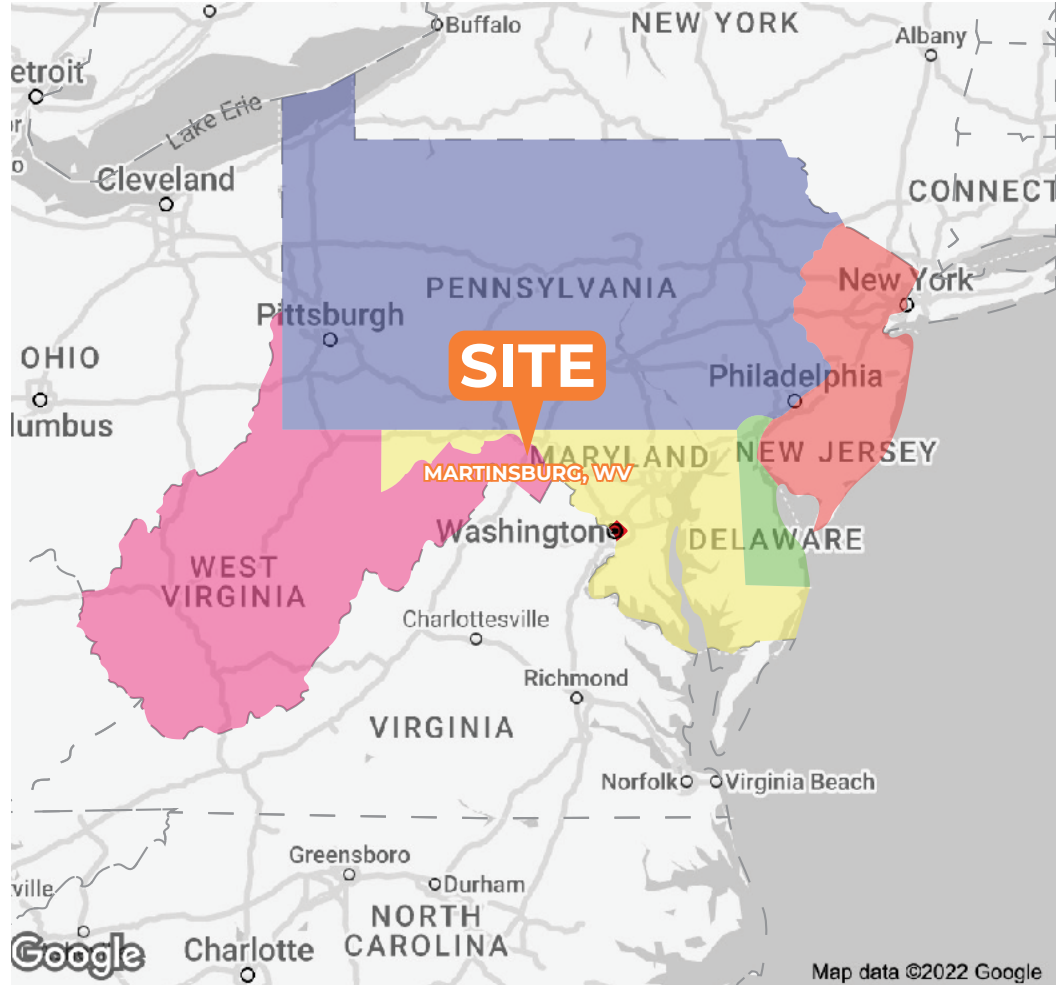
1291-1357 Edwin Miller Boulevard - Martinsburg, WV 25404

±1,200-1,600 SF Available for Lease

About Old Courthouse Square

Old Courthouse Square is anchored by Martin's Food Stores and joined along the U.S. Postal Service, Super Shoes and Rent A Center. The property features a strong mix of national and regional tenants combined with an outstanding assortment of traffic generating tenants.

The property is located just one and a half miles from I-81 with 50,500 AADT and is located at the signalized intersection of Edwin Miller Boulevard (Route 9) and N. Raleigh Street/Williamsport Pike (U.S. Route 11) with a combined 30,829 vehicles per day. Route 9 serves as a well-traveled commercial corridor – home to significant employment centers, including the U.S. Social Security Administration, U.S. Internal Revenue Service, U.S. Agricultural Department and a Veteran's Affairs office.



Questions? Contact Us.

Melissa Lippe
MLippe@jcbareprop.com
p. 610-206-3319
c. 215-264-6964

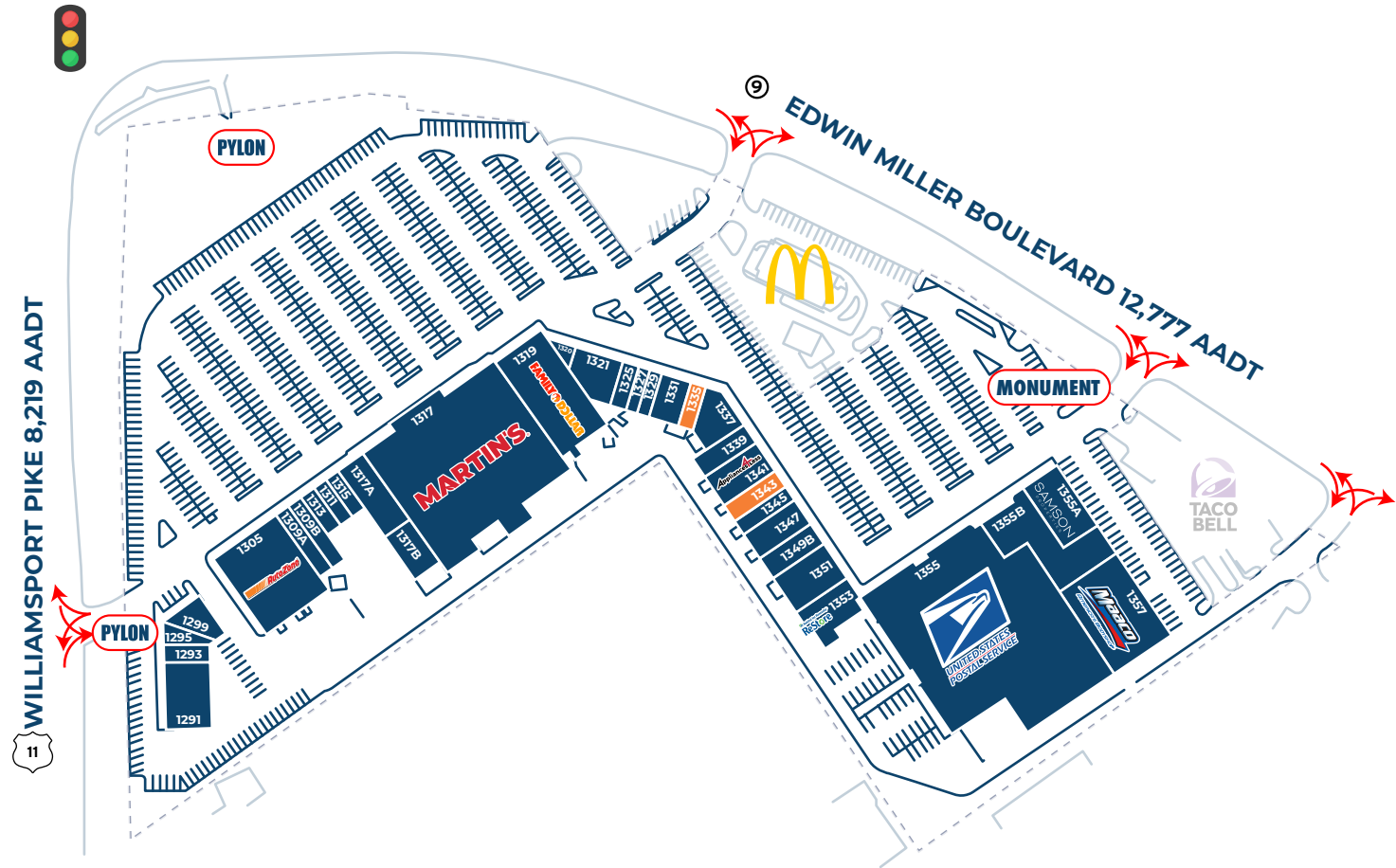
Rob V. Gothier, III
RG3@jcbareprop.com
p. 717-761-7801
c. 717-712-4601

Old Courthouse Square

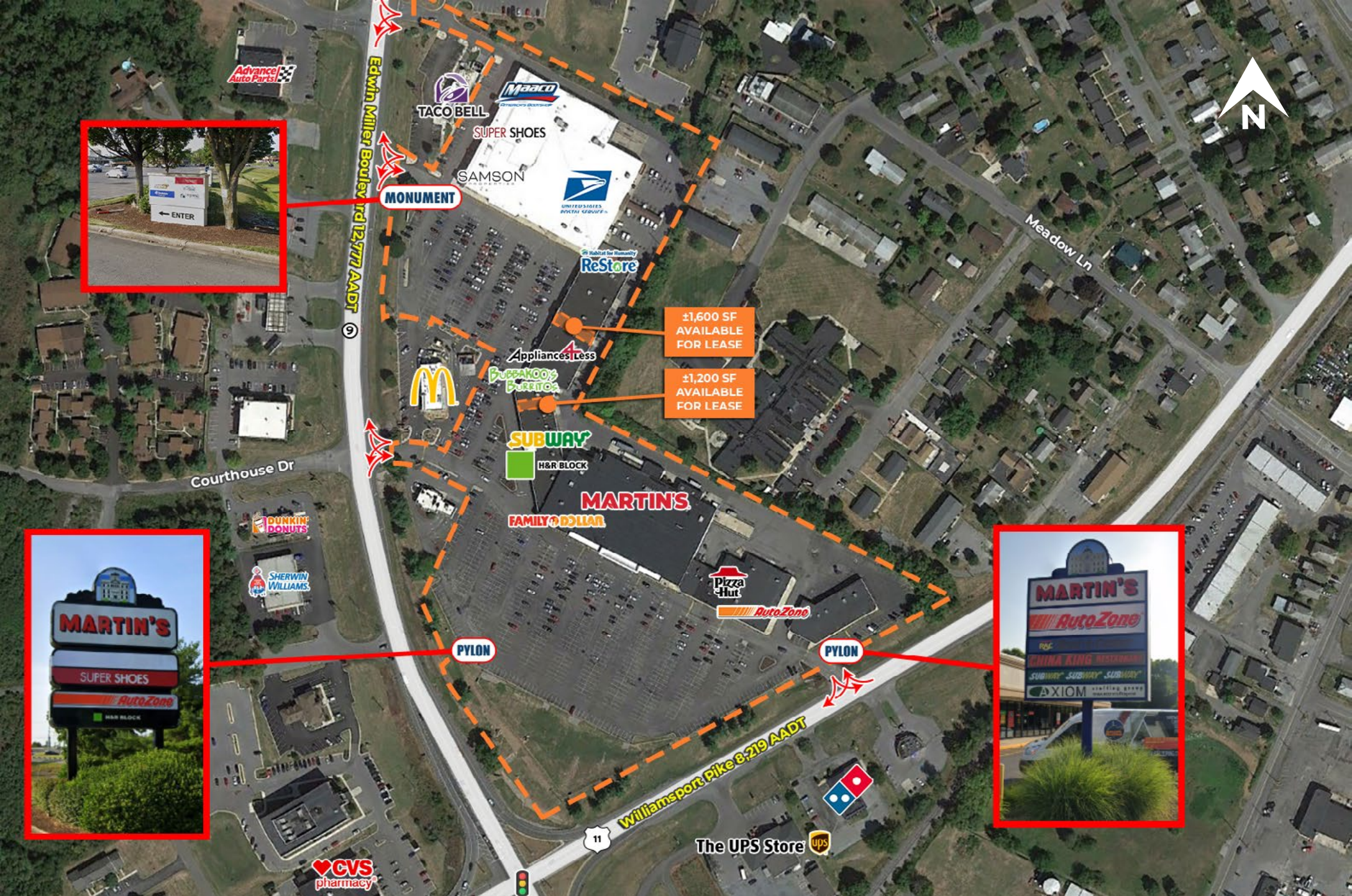
Edwin Miller Blvd, Martinsburg, WV 25404



Unit	Tenant	Square Footage
1291	Summit Capital	±5,000 SF
1293-95	Jordan's Flooring	±2,564 SF
1299	Axiom Staffing Group	±2,522 SF
1305	Autozone	±12,000 SF
1309A	Smoker Friendly	±2,000 SF
1309B	Pizza Hut	±2,000 SF
1311	Moore's Pharmacy	±1,200 SF
1313	China King	±1,200 SF
1315	GO Metro	±1,200 SF
1317	Martin's	±39,177 SF
1317A	Jordan's Flooring Warehouse	±4,060 SF
1317B	Jordan's Flooring Warehouse	±2,599 SF
1319	Family Dollar	±11,229 SF
1320	Not Available	40 SF
1321	H&R Block	±3,643 SF
1325	Subway	±1,200 SF
1327	Express Homes	±1,200 SF
1329	Quality Cleaner	±1,200 SF
1331	Sumo Asian Fusion	±2,400 SF
1335	AVAILABLE	±1,200 SF
1337	Twist & Turn Laundromat	±3,178 SF
1339	Bubakoos	±1,972 SF
1341	Appliance For Less	±4,428 SF
1343	AVAILABLE	±1,600 SF
1345	Sofia's	±1,600 SF
1347	Beauty International	±3,200 SF
1349B	OneMain Financial	±2,400 SF
1351	The Ogden Newspaper	±3,253 SF
1353	Habitat for Humanity ReStore	±5,220 SF
1355	US Postal Service	±43,966 SF
1355A	Samson Properties	±5,800 SF
1355B	Super Shoes	±14,886 SF
1357	Maaco	±12,829 SF
	Ground McDonald's	Pad

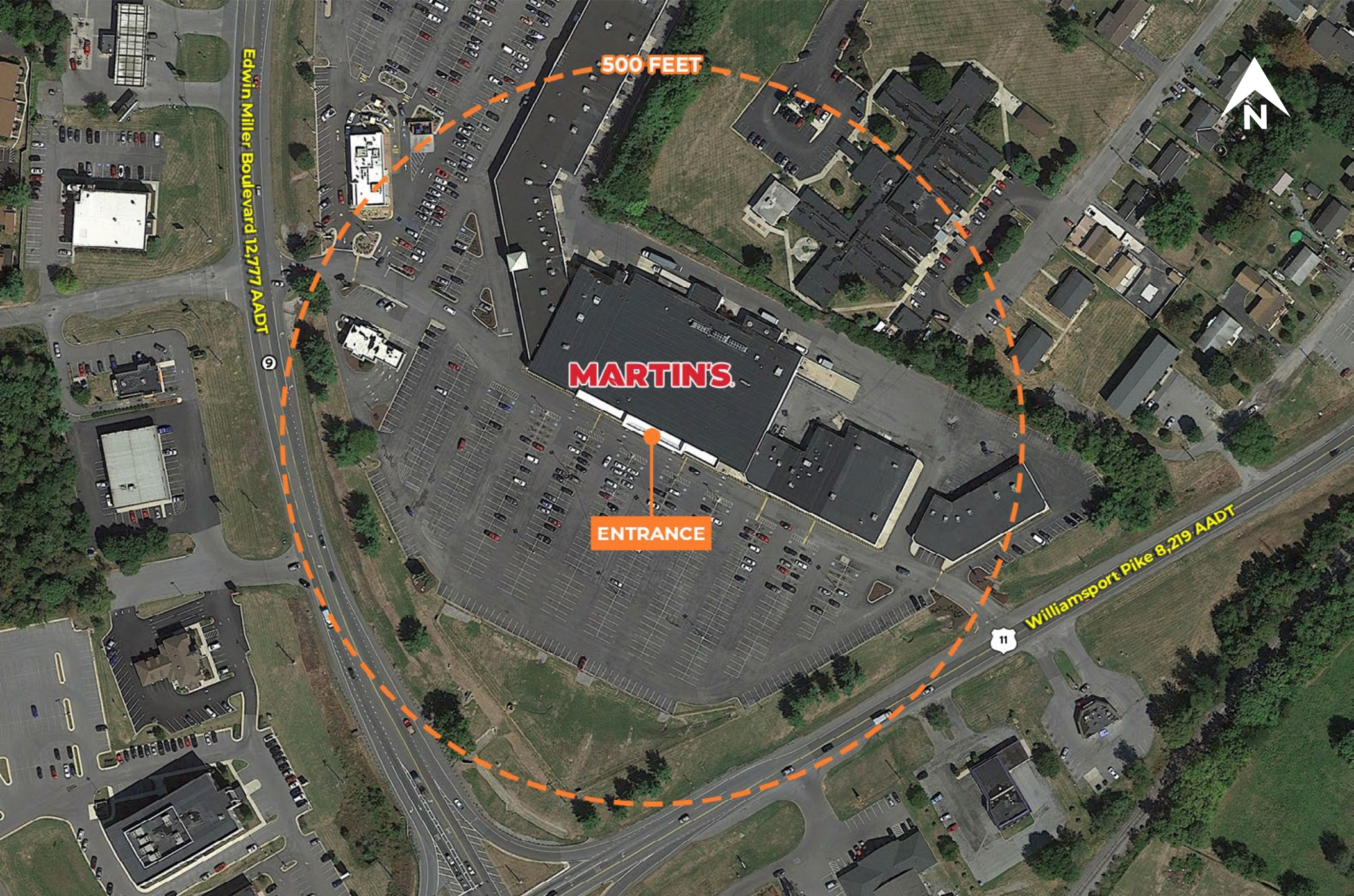


Site Plan



Local Aerial

The information and images contained herein are from sources deemed reliable. However, J.C.BAR Properties, Inc. makes no representation whatsoever as to their accuracy or authenticity. Images shown may be modified for illustrative purposes. Images may be out-of-date and not current.



Radius Restriction



Market Aerial