

Mac Phail Crossing

540 W MacPhail Road - Bel Air, MD 21014

±45,207 SF Available for Lease

NOW ON THE MARKET!



Questions? Contact Us.

Greg Jones

GJones@jcbarprop.com

p. 610-234-6491

c. 484-948-5217

Melissa Lippe

MLippe@jcbarprop.com

p. 610-206-3319

c. 215-264-6964

Mac Phail Crossing

540 W MacPhail Road - Bel Air, MD 21014

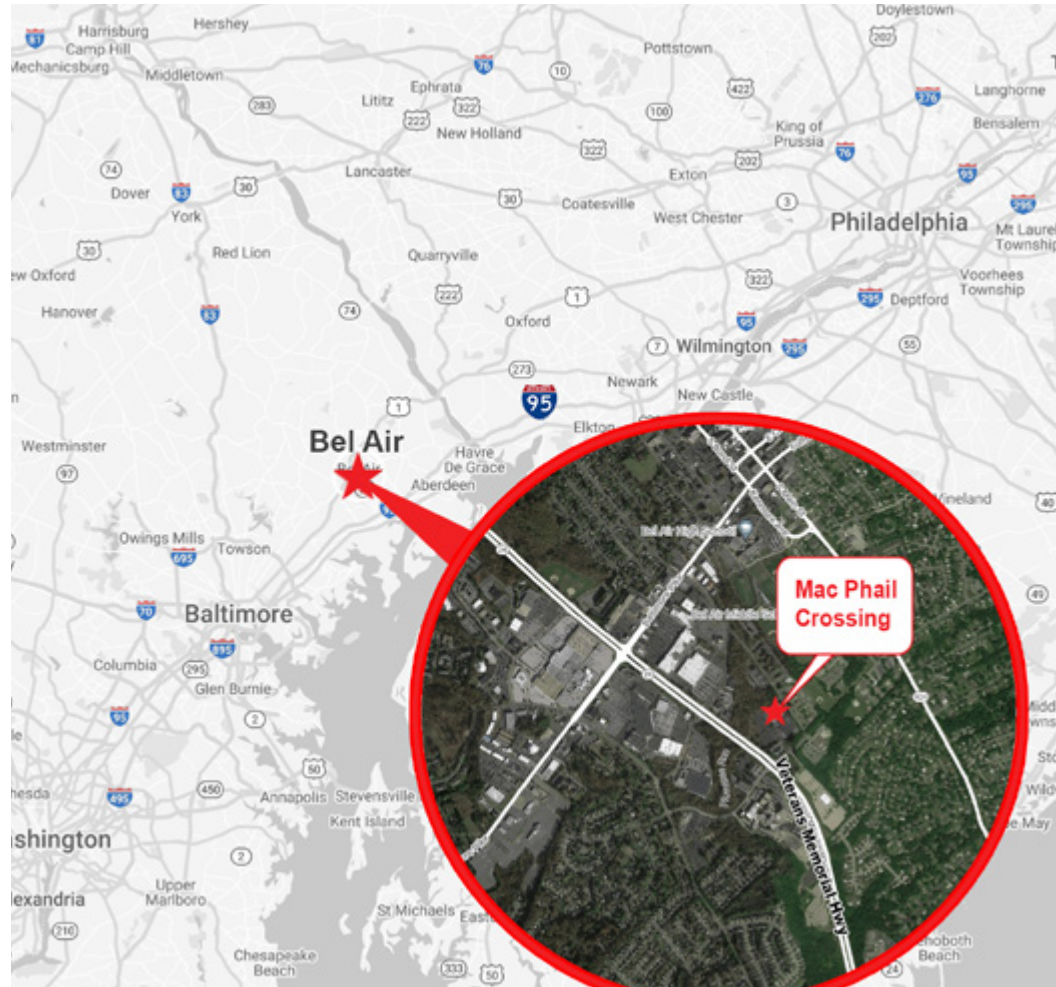
±45,207 SF Available for Lease

JOIN

weis Patient First

Highlights

- Rare Anchor Opportunity in unmatched retail market at the high-profile intersection: Veterans Memorial Highway (Route 24) and W. Mac Phail Road!
- Traffic Count: Veterans Memorial Highway (Route 24): 40,131 VPD
- 17' clear to roof deck
- Sign on Monument Available
- Area Retailers:



Questions? Contact Us.

Greg Jones

GJones@jcbarprop.com
p. 610-234-6491
c. 484-948-5217

Melissa Lippe

MLippe@jcbarprop.com
p. 610-206-3319
c. 215-264-6964

Mac Phail Crossing

540 W MacPhail Road - Bel Air, MD 21014

±45,207 SF Available for Lease

JOIN

weis Patient First

MAJOR EMPLOYERS

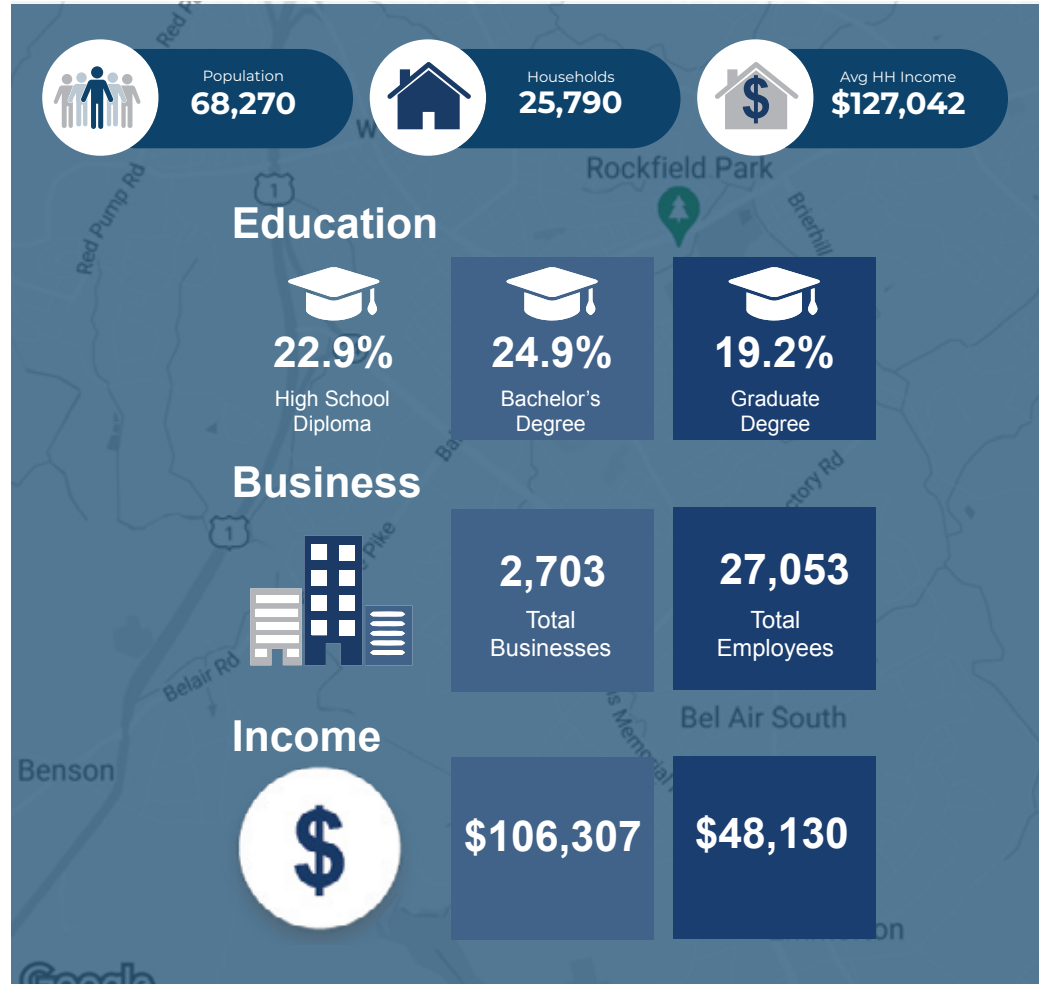
Start within Aberdeen Proving Ground, Harford Community College, University of Maryland Medical System, RiteAid, ShopRite, Kohl's, Frito Lay, and Sephora USA.

EDUCATION

Harford Community College has an enrollment of 10,000 students with a median age of 22 and was selected as one of the Baltimore Sun's top workplaces. In addition, Harford County is home to 11 senior high schools boasting a combined enrollment of more than 12,000 students.

Demographic	1 Mile	3 Miles	5 Miles
Population	9,818	68,270	118,628
Households	3,944	25,790	44,602
Avg HH Income	\$113,841	\$127,042	\$125,473

Traffic Count Maryland Route: 40,131 ADT



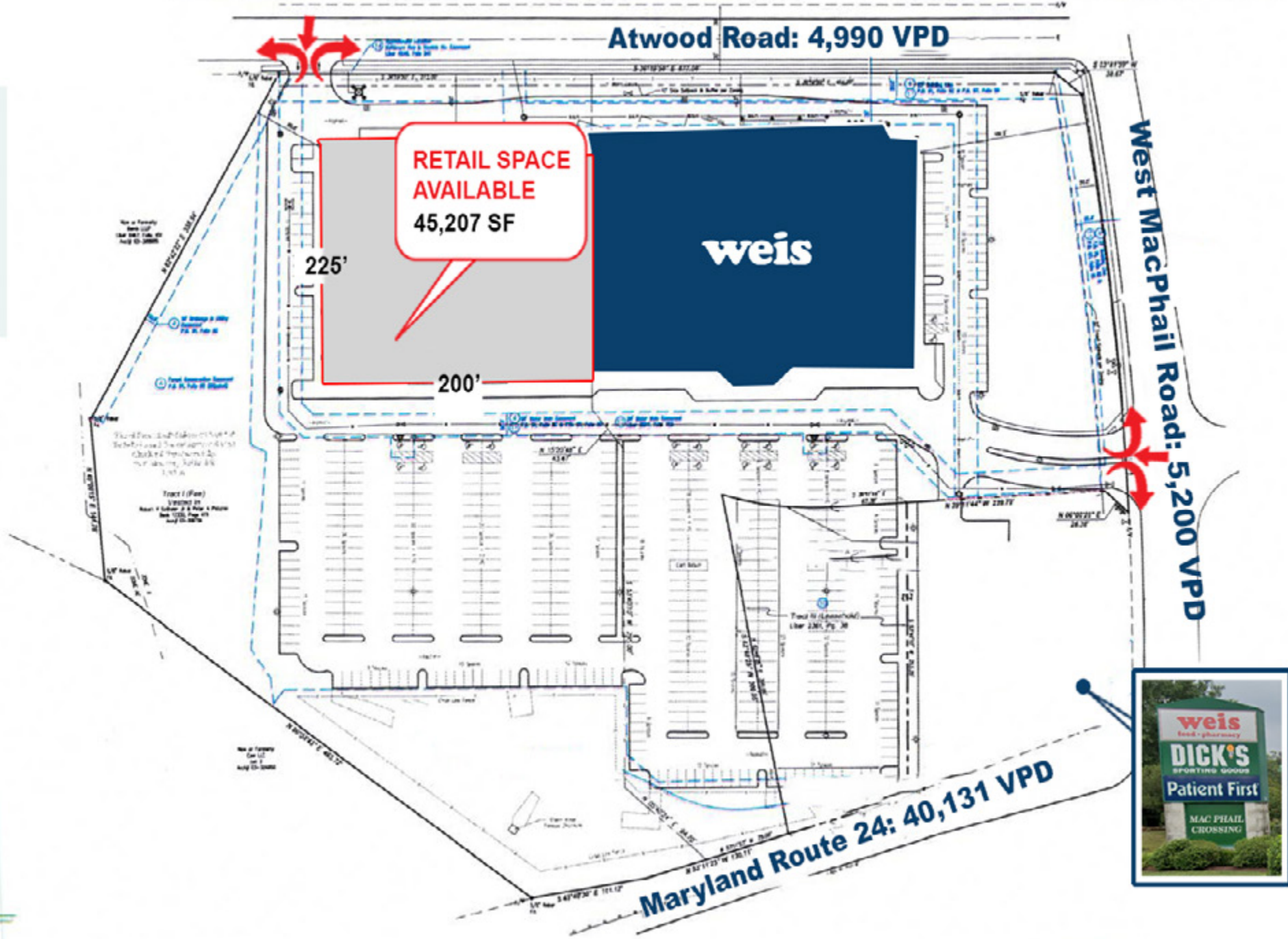
Questions? Contact Us.

Greg Jones

GJones@jcbarprop.com
p. 610-234-6491
c. 484-948-5217

Melissa Lippe

MLippe@jcbarprop.com
p. 610-206-3319
c. 215-264-6964



Site Plan



Bel Air Plaza



S Atwood Rd: 4,990 VPD

Veterans Memorial Hwy: 40,131 VPD

W MacPhail Rd: 5,200 VPD

weis

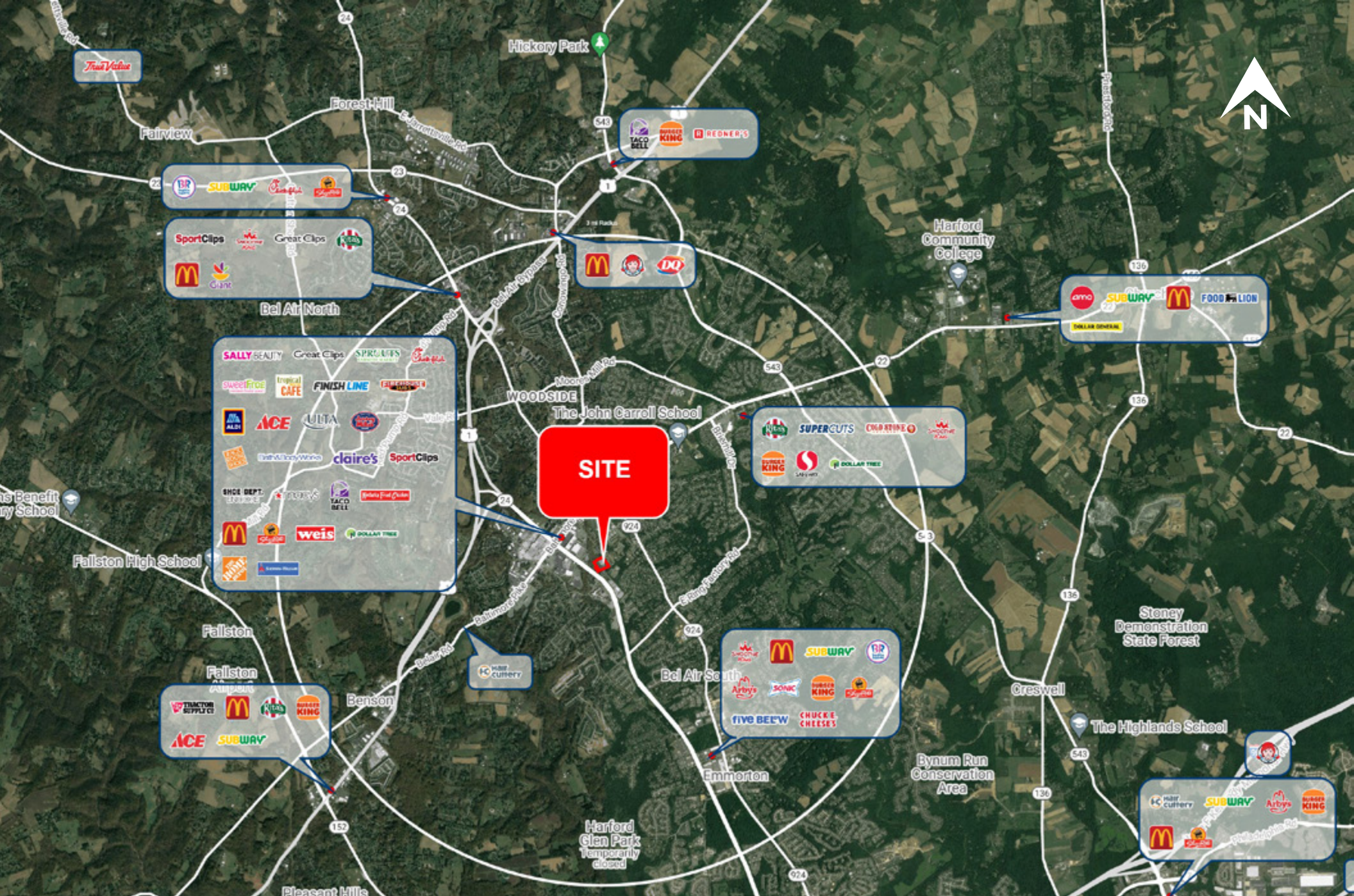


Pylon Sign



Local Aerial

The information and images contained herein are from sources deemed reliable. However, J.C.BAR Properties, Inc. makes no representation whatsoever as to their accuracy or authenticity. Images shown may be modified for illustrative purposes. Images may be out-of-date and not current.



Market Aerial