

Logan Valley Mall

5580 Goods Lane - Altoona, PA 16602

±535-6,200 SF | ±137,279 SF Former Bon-Ton Available for Sale or Lease

Total Mall GLA:
±785,000 SF



Corporate Office
224 St. Charles Way, Suite 290
York, PA 17402

Conshohocken Office
100 Front Street, Suite 560
West Conshohocken, PA 19428

Questions? Contact Us.



Greg Jones
GJones@jcbarprop.com
p. 610-234-6491
c. 484-948-5217

Jamar Gordon
JGordon@jcbarprop.com
p. 717-296-1796
c. 717-681-3541

Emeka Agubata
EAgubata@jcbarprop.com
p. 717-761-7801
c. 412-620-8154

Logan Valley Mall

5580 Goods Lane - Altoona, PA 16602

Total Mall GLA:
±785,000 SF

±535-6,200 SF | ±137,279 SF Former Bon-Ton Available for Sale or Lease

Highlights

- Home to Penn State Altoona
- Largest city in Blair County
- 120,000 College Students within 40 Miles
- UPMC Altoona has over 4,500 employees
- Annual Visits: 1.4 Million
- Premiere anchor opportunity available in former Bon-Ton!
- GLA: ±785,000 SF
- Availabilities: In-line & Outparcels
- Goods Lane with 10,616 AADT
- I-99 with 36,821 AADT



Major Employers

- UPMC Altoona
- Sheetz Inc
- State Government
- Federal Government
- Altoona Area School District
- Sheets Distribution Services LLC
- Walmart
- Giant Food Stores
- Penn State University
- Hollidaysburg Area School District
- Pyramid Healthcare
- Blair County
- Blair Medical Associates
- New Pig Corporation
- NPC Inc
- Skills of Central PA
- Franklin Logistics
- Tyrone Area School District
- Blair Companies
- McLanahan Corporation

JOIN



Demographic	3 Miles	5 Miles	10 Miles
Population	34,103	70,389	102,097
Households	14,897	30,357	43,166
Avg HH Income	\$86,634	\$84,915	\$87,552
Daytime Employees	22,180	35,810	41,747

Questions? Contact Us.



Corporate Office
224 St. Charles Way, Suite 290
York, PA 17402

Conshohocken Office
100 Front Street, Suite 560
West Conshohocken, PA 19428

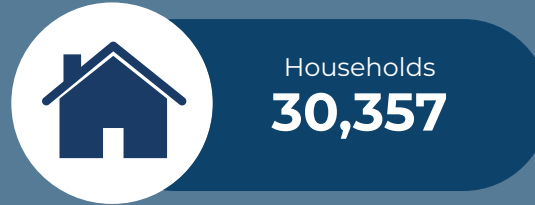
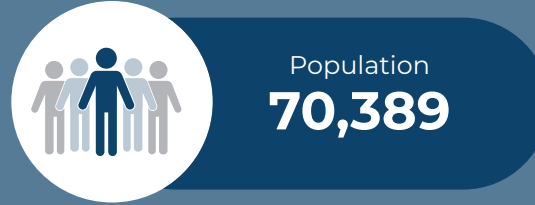
Greg Jones
GJones@jcbprop.com
p. 610-234-6491
c. 484-948-5217

Jamar Gordon
JGordon@jcbprop.com
p. 717-296-1796
c. 717-681-3541

Emeka Agubata
EAgubata@jcbprop.com
p. 717-761-7801
c. 412-620-8154

About Logan Valley Mall

The Logan Valley Mall is a regional shopping mall that is located in Altoona, Pennsylvania. It is currently anchored by JCPenney and Macy's and features more than 50 stores and services on two levels. Logan Valley Mall is located on the major retail strip in Altoona, off of Route 22 on the Plank Road Exit. Situated in Central Pennsylvania, approximately 90 miles from Pittsburgh, and 80 miles from the state's capital, Blair County, which has become a landmark of it's own experiencing growth and expansion. Altoona located in Blair County; principle center for retail, cultural and educational activities. There is excellent access to I-99, PA Route 22.



*Demographics based on 5-Mile Radius

Area Facts

Blair County Colleges

- Penn State Altoona
- Juniata College
- Saint Francis University
- Mount Aloysius College
- YTI Career Institute
- Pennsylvania Highlands Community College

Major Employers

- UPMC Altoona
- Sheetz Inc
- State Government
- Federal Government
- Altoona Area School District
- Sheets Distribution
- Walmart

Major Attractions

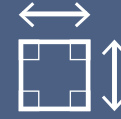
- Altoona Railroaders Memorial Museum
- Peoples Natural Gas Field
- Horshoe Curve Natural Landmark
- Boyer Candy Factory Outlet
- Fort Roberdeau
- Mike's Court
- Lakemont Park



Corporate Office
224 St. Charles Way, Suite 290
York, PA 17402

Conshohocken Office
100 Front Street, Suite 560
West Conshohocken, PA 19428

Site Information



±785,000 SF
Gross Leasable Area



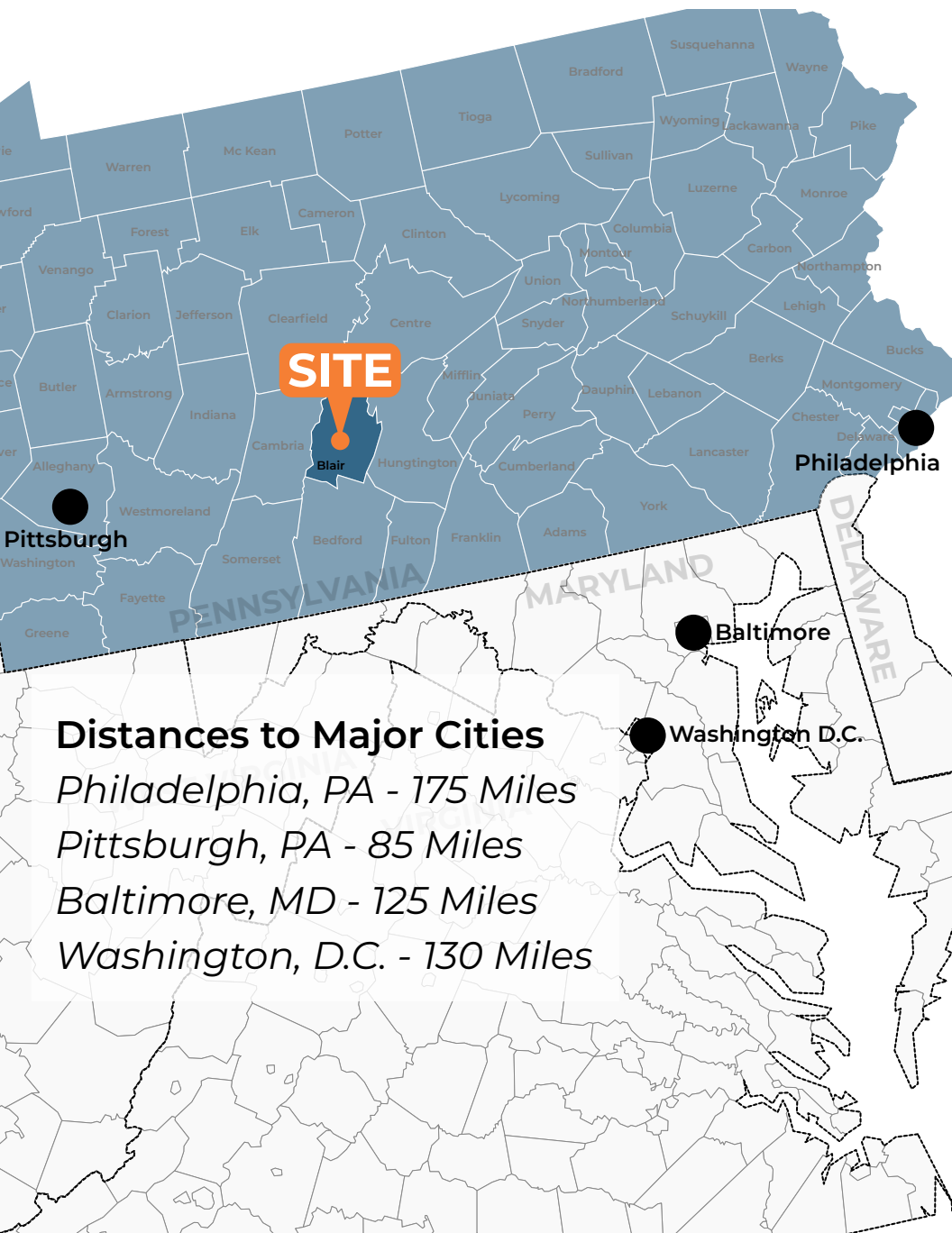
±56.91 AC
Land Size Area



4,300
Parking Spaces



35,810
Daytime Population
*Demographics based on 5-Mile Radius

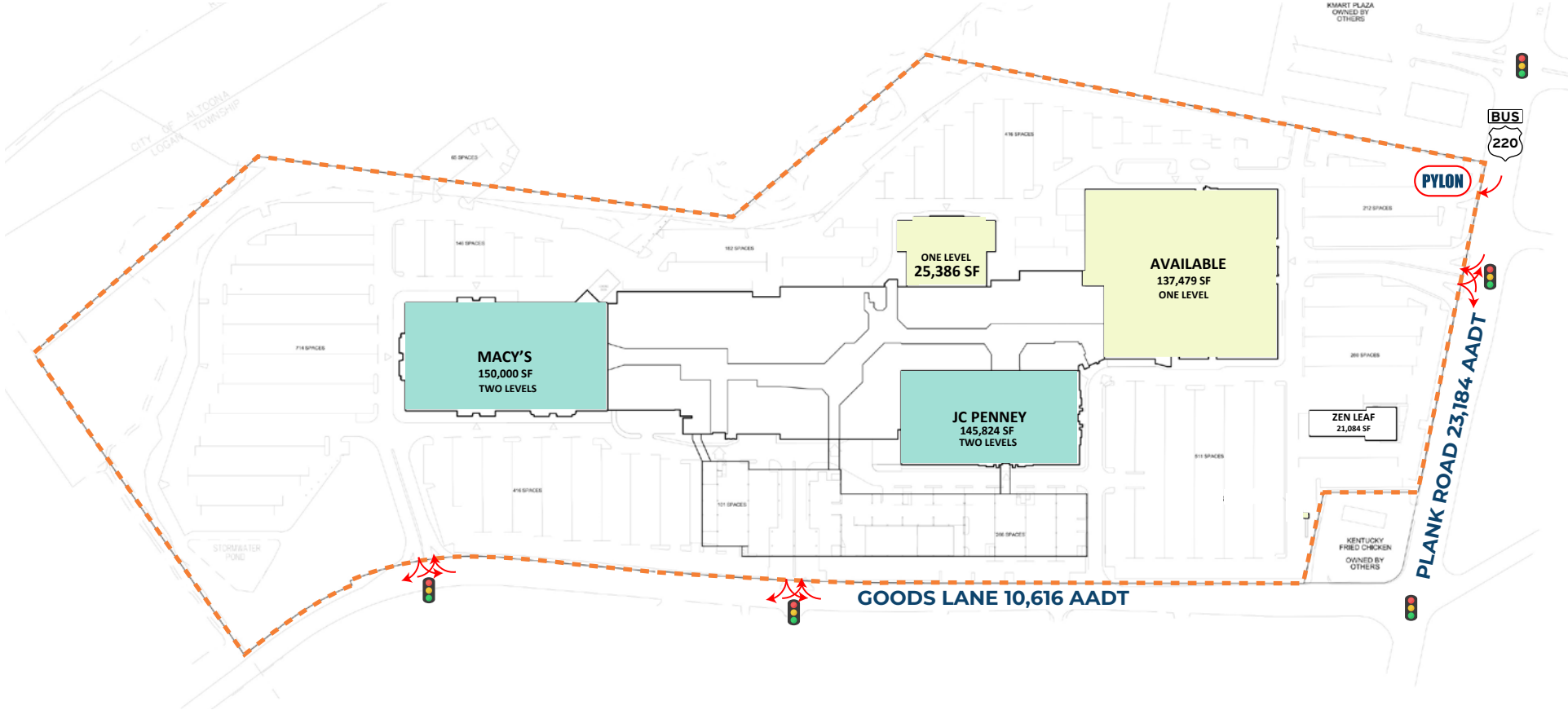


Corporate Office
224 St. Charles Way, Suite 290
York, PA 17402

Conshohocken Office
100 Front Street, Suite 560
West Conshohocken, PA 19428

Logan Valley Mall

5580 Goods Lane - Altoona, PA 16602



Corporate Office
224 St. Charles Way, Suite 290
York, PA 17402

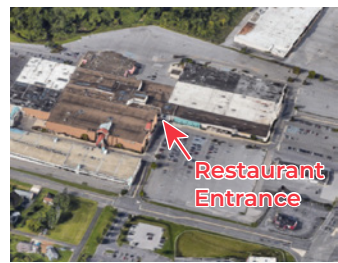
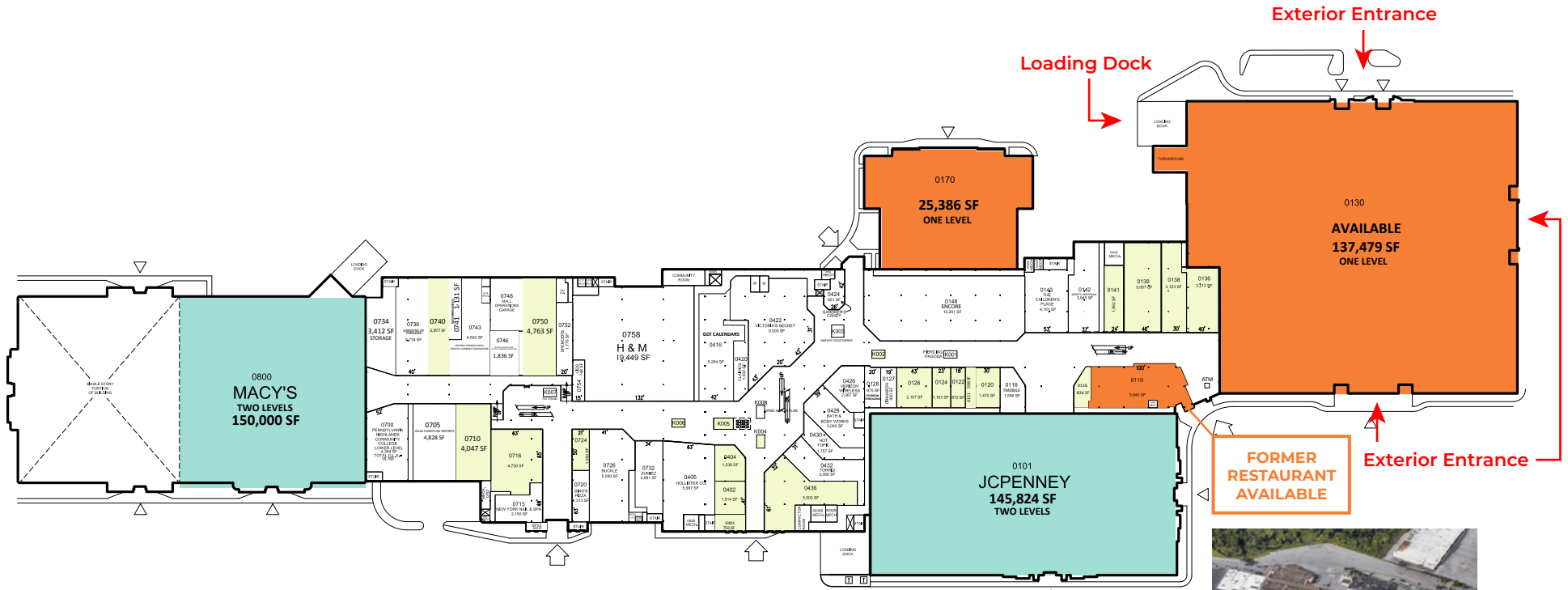
Conshohocken Office
100 Front Street, Suite 560
West Conshohocken, PA 19428

Site Plan

The information and images contained herein are from sources deemed reliable. However, J.C.BAR Properties, Inc. makes no representation whatsoever as to their accuracy or authenticity. Images shown may be modified for illustrative purposes. Images may be out-of-date and not current.

Logan Valley Mall - Ground Floor

5580 Goods Lane - Altoona, PA 16602



Corporate Office
224 St. Charles Way, Suite 290
York, PA 17402

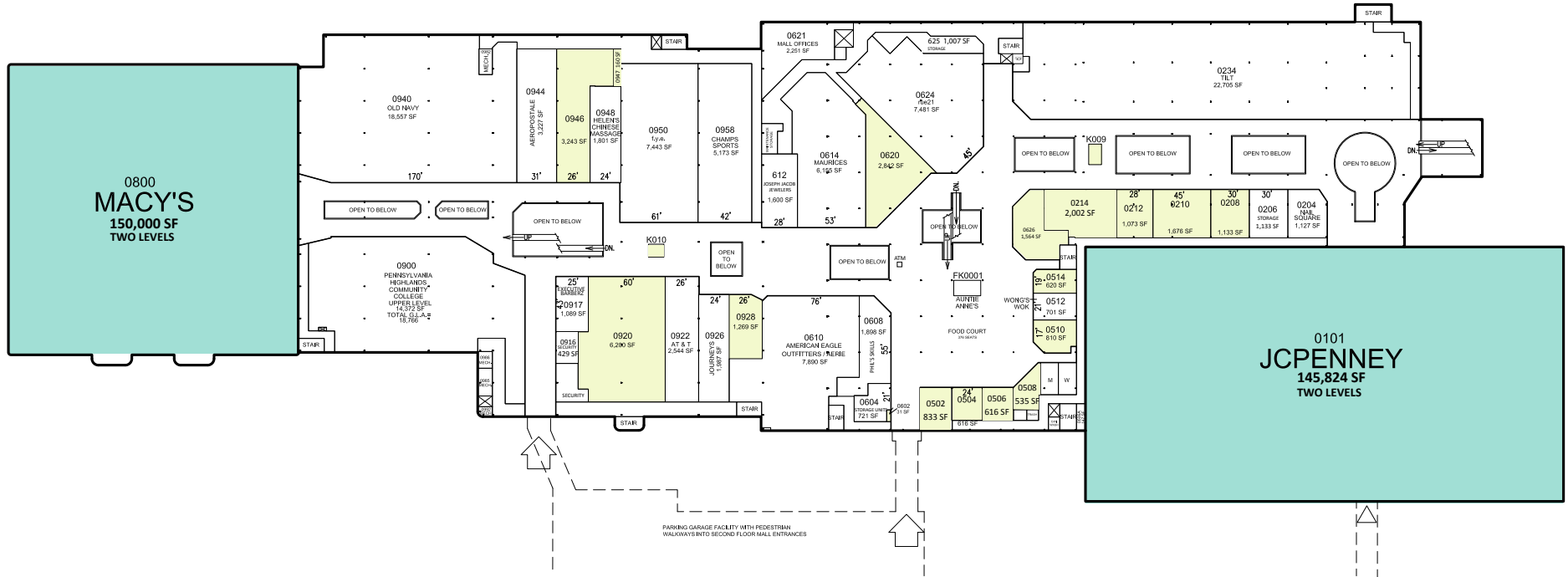
Conshohocken Office
100 Front Street, Suite 560
West Conshohocken, PA 19428

Leasing Plan

The information and images contained herein are from sources deemed reliable. However, J.C.BAR Properties, Inc. makes no representation whatsoever as to their accuracy or authenticity. Images shown may be modified for illustrative purposes. Images may be out-of-date and not current.

Logan Valley Mall - Upper Level

5580 Goods Lane - Altoona, PA 16602



Leased
 Available



Corporate Office
 224 St. Charles Way, Suite 290
 York, PA 17402
Conshohocken Office
 100 Front Street, Suite 560
 West Conshohocken, PA 19428

Leasing Plan

The information and images contained herein are from sources deemed reliable. However, J.C.BAR Properties, Inc. makes no representation whatsoever as to their accuracy or authenticity. Images shown may be modified for illustrative purposes. Images may be out-of-date and not current.



Corporate Office
224 St. Charles Way, Suite 290
York, PA 17402
Conshohocken Office
100 Front Street, Suite 560
West Conshohocken, PA 19428

Zoom Aerial



Corporate Office
 224 St. Charles Way, Suite 290
 York, PA 17402

Conshohocken Office
 100 Front Street, Suite 560
 West Conshohocken, PA 19428

Local Aerial



Corporate Office
 224 St. Charles Way, Suite 290
 York, PA 17402

Conshohocken Office
 100 Front Street, Suite 560
 West Conshohocken, PA 19428

Market Aerial

The information and images contained herein are from sources deemed reliable. However, J.C.BAR Properties, Inc. makes no representation whatsoever as to their accuracy or authenticity. Images shown may be modified for illustrative purposes. Images may be out-of-date and not current.