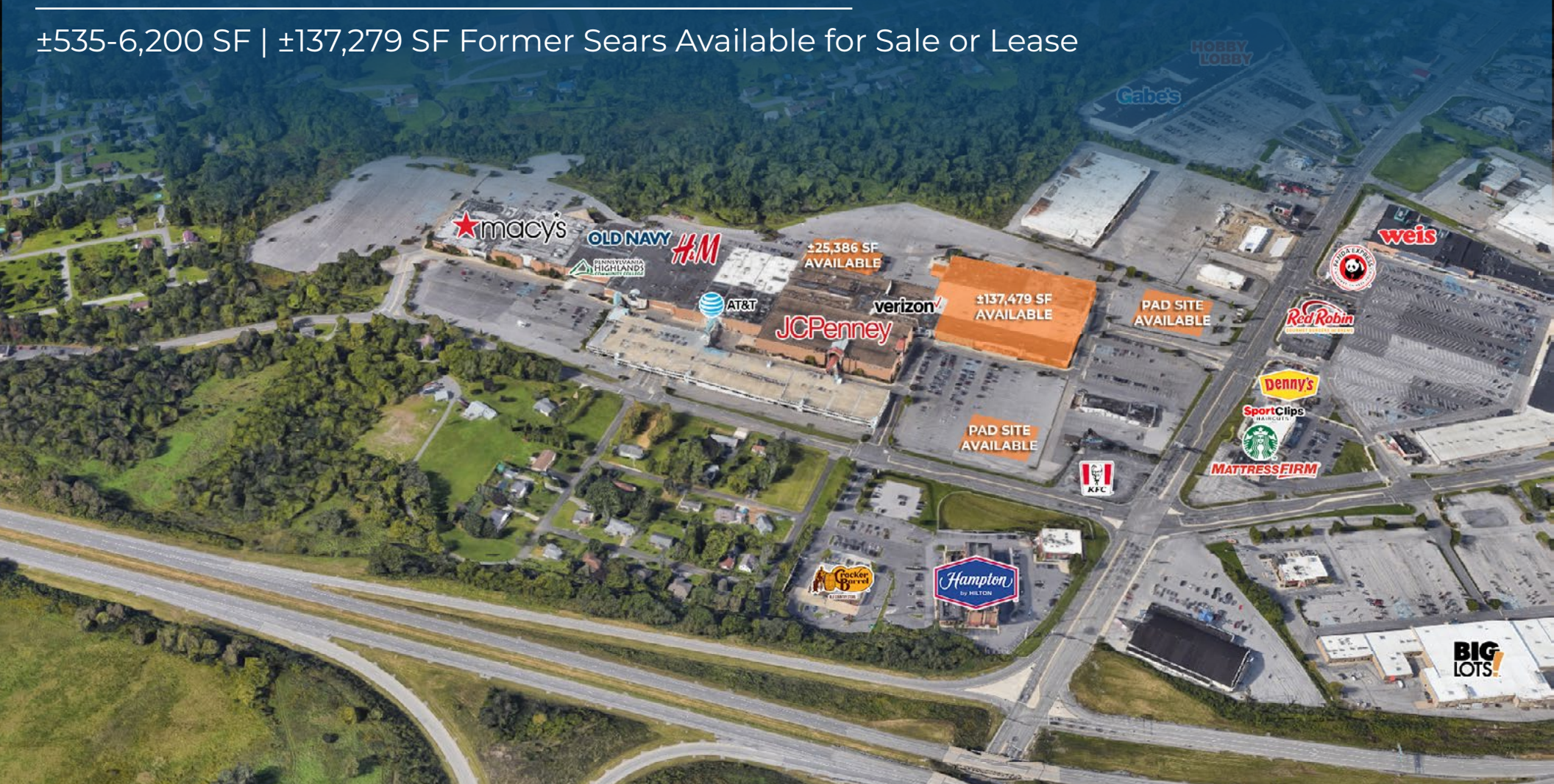


# Logan Valley Mall

5580 Goods Lane - Altoona, PA 16602

±535-6,200 SF | ±137,279 SF Former Sears Available for Sale or Lease

Total Mall GLA:  
±785,000 SF



## Questions? Contact Us.

**Greg Jones**

GJones@jcbarprop.com  
p. 610-234-6491  
c. 484-948-5217

**Kyle McLaughlin**

Kyle@jcbarprop.com  
p. 610-206-3791  
c. 215-622-0905

# Logan Valley Mall

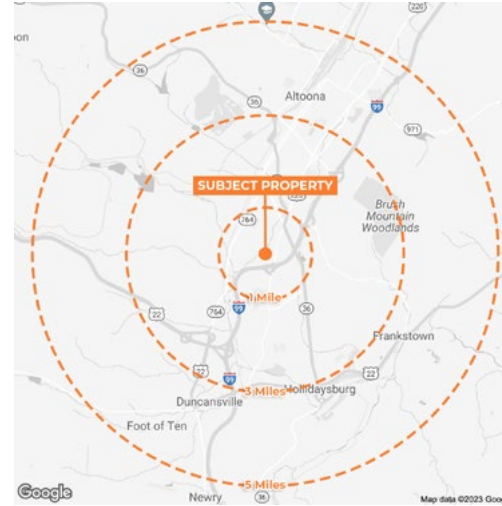
5580 Goods Lane - Altoona, PA 16602

**Total Mall GLA:**  
**±785,000 SF**

±535-6,200 SF | ±137,279 SF Former Sears Available for Sale or Lease

## Highlights

- Home to Penn State Altoona
- Largest city in Blair County
- 120,000 College Students within 40 Miles
- UPMC Altoona has over 4,500 employees
- Annual Visits: 1.4 Million
- Premiere anchor opportunity available in former Sears!
- GLA: ±785,000 SF
- Availabilities: In-line & Outparcels
- Goods Lane with 10,616 AADT
- I-99 with 36,821 AADT



## Major Employers

- UPMC Altoona
- Sheetz Inc
- State Government
- Federal Government
- Altoona Area School District
- Sheets Distribution Services LLC
- Walmart
- Giant Food Stores
- Penn State University
- Hollidaysburg Area School District
- Pyramid Healthcare
- Blair County
- Blair Medical Associates
- New Pig Corporation
- NPC Inc
- Skills of Central PA
- Franklin Logistics
- Tyrone Area School District
- Blair Companies
- McLanahan Corporation

**JOIN**



| Demographic       | 3 Miles  | 5 Miles  | 10 Miles |
|-------------------|----------|----------|----------|
| Population        | 34,103   | 70,389   | 102,097  |
| Households        | 14,897   | 30,357   | 43,166   |
| Avg HH Income     | \$86,634 | \$84,915 | \$87,552 |
| Daytime Employees | 22,180   | 35,810   | 41,747   |

## Questions? Contact Us.

**Greg Jones**

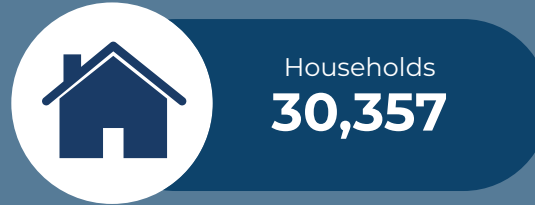
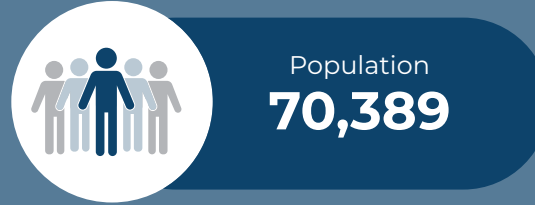
GJones@jcbarprop.com  
p. 610-234-6491  
c. 484-948-5217

**Kyle McLaughlin**

Kyle@jcbarprop.com  
p. 610-206-3791  
c. 215-622-0905

## About Logan Valley Mall

The Logan Valley Mall is a regional shopping mall that is located in Altoona, Pennsylvania. It is currently anchored by JCPenney and Macy's and features more than 50 stores and services on two levels. Logan Valley Mall is located on the major retail strip in Altoona, off of Route 22 on the Plank Road Exit. Situated in Central Pennsylvania, approximately 90 miles from Pittsburgh, and 80 miles from the state's capital, Blair County, which has become a landmark of it's own experiencing growth and expansion. Altoona located in Blair County; principle center for retail, cultural and educational activities. There is excellent access to I-99, PA Route 22.



\*Demographics based on 5-Mile Radius

## Area Facts

### Blair County Colleges

- Penn State Altoona
- Juniata College
- Saint Francis University
- Mount Aloysius College
- YTI Career Institute
- Pennsylvania Highlands Community College

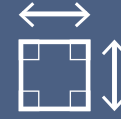
### Major Employers

- UPMC Altoona
- Sheetz Inc
- State Government
- Federal Government
- Altoona Area School District
- Sheets Distribution
- Walmart

### Major Attractions

- Altoona Railroaders Memorial Museum
- Peoples Natural Gas Field
- Horseshoe Curve Natural Landmark
- Boyer Candy Factory Outlet
- Fort Roberdeau
- Mike's Court
- Lakemont Park

## Site Information



**±785,000 SF**  
Gross Leasable Area



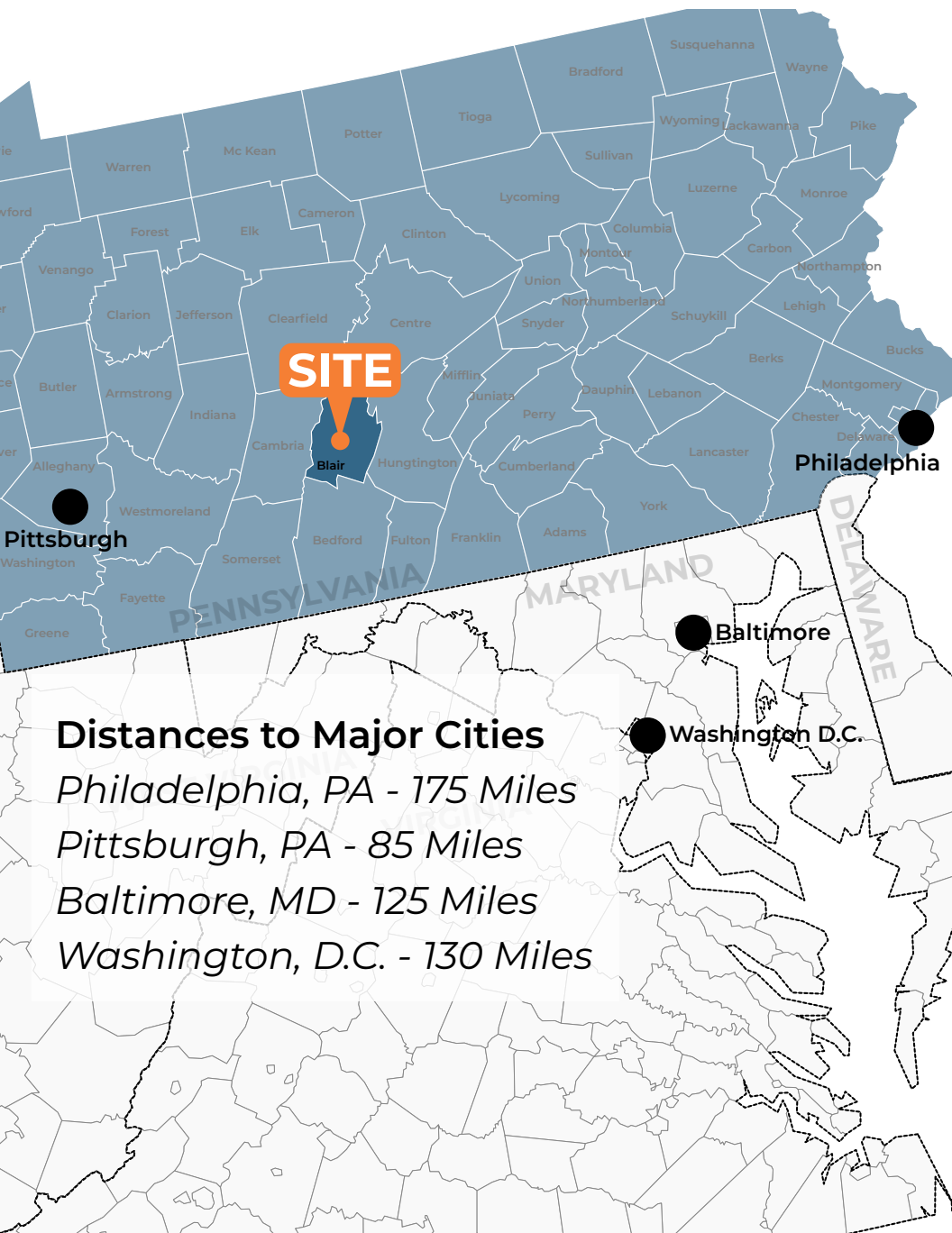
**±56.91 AC**  
Land Size Area



**4,300**  
Parking Spaces

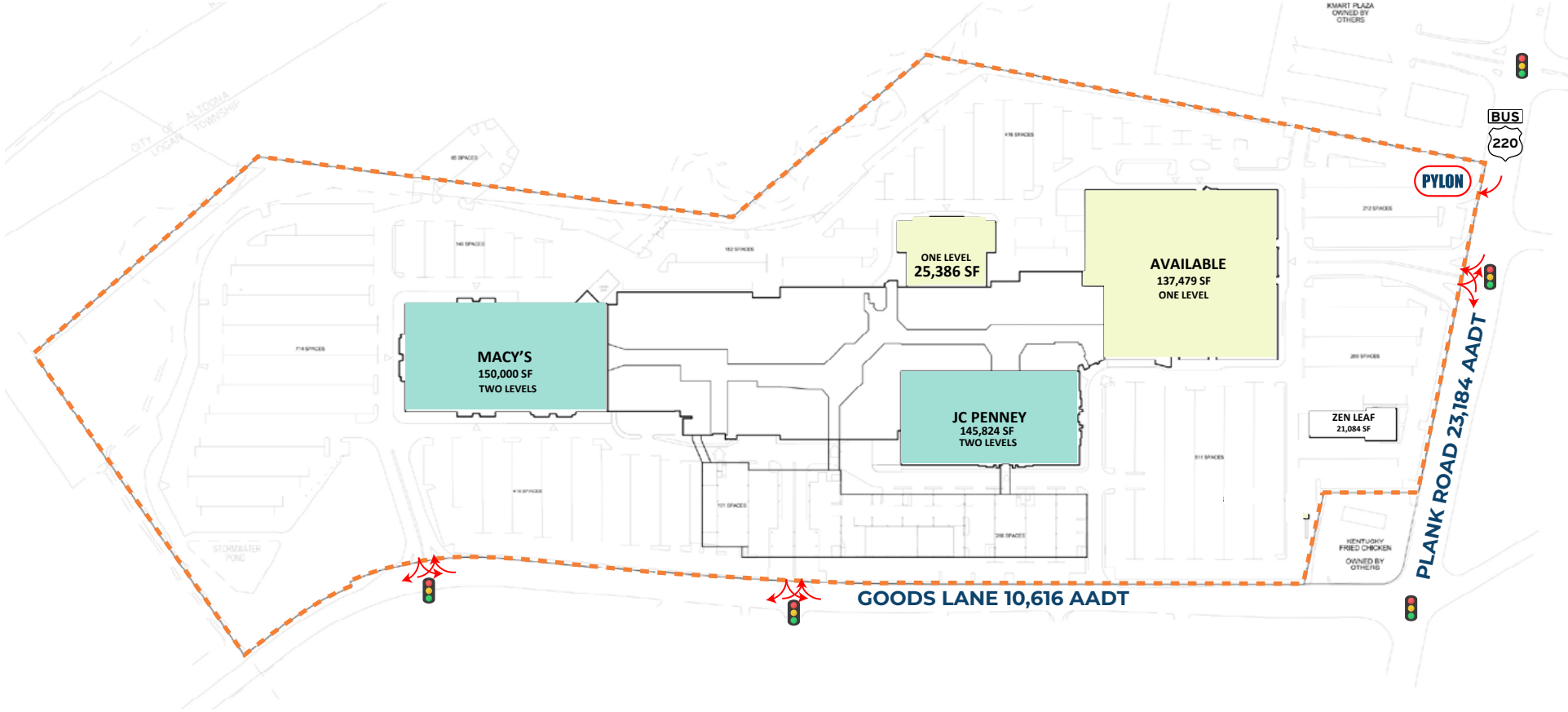


**35,810**  
Daytime Population  
\*Demographics based on 5-Mile Radius



# Logan Valley Mall

5580 Goods Lane - Altoona, PA 16602

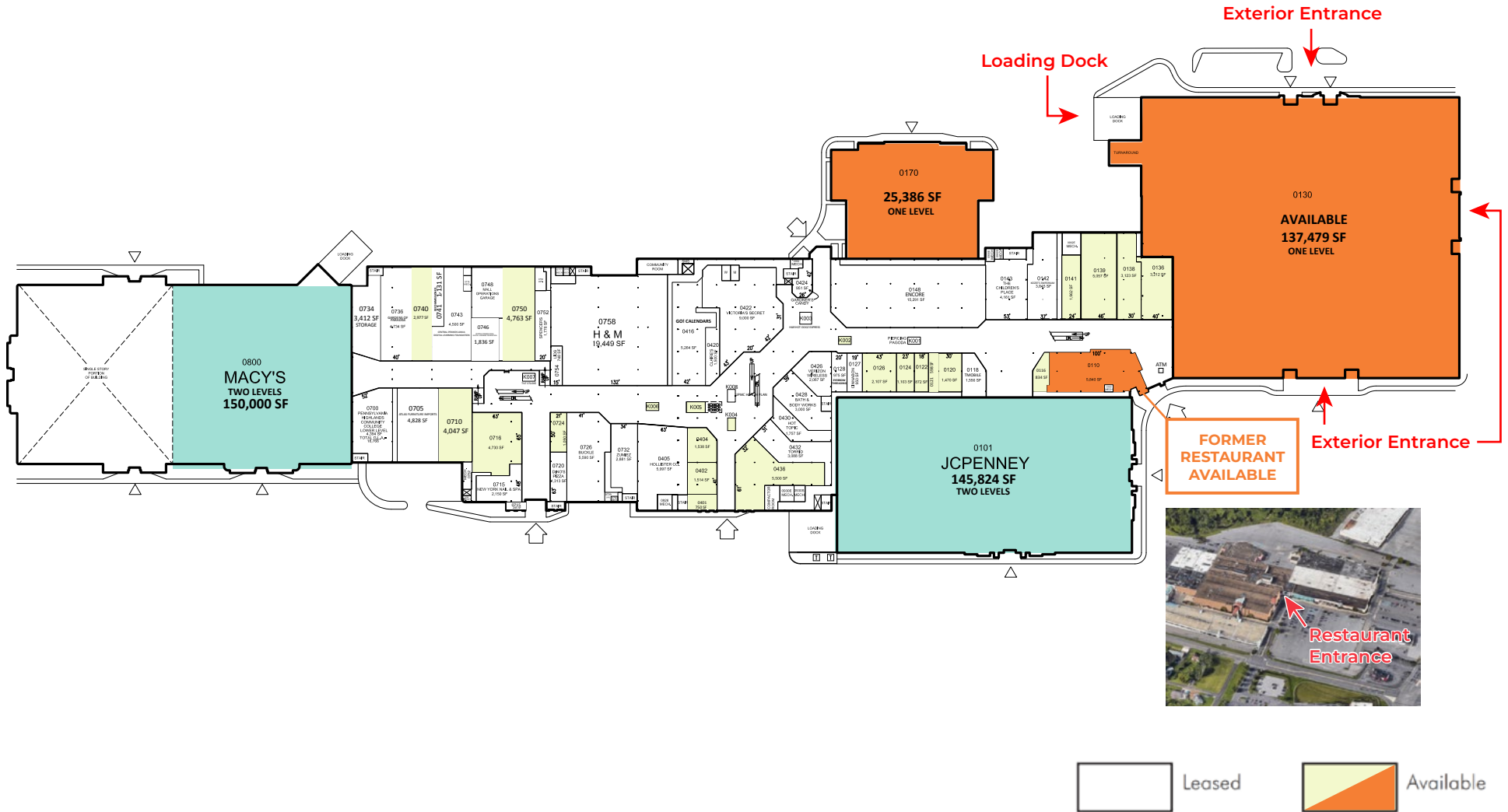


# Site Plan

The information and images contained herein are from sources deemed reliable. However, J.C.BAR Properties, Inc. makes no representation whatsoever as to their accuracy or authenticity. Images shown may be modified for illustrative purposes. Images may be out-of-date and not current.

# Logan Valley Mall - Ground Floor

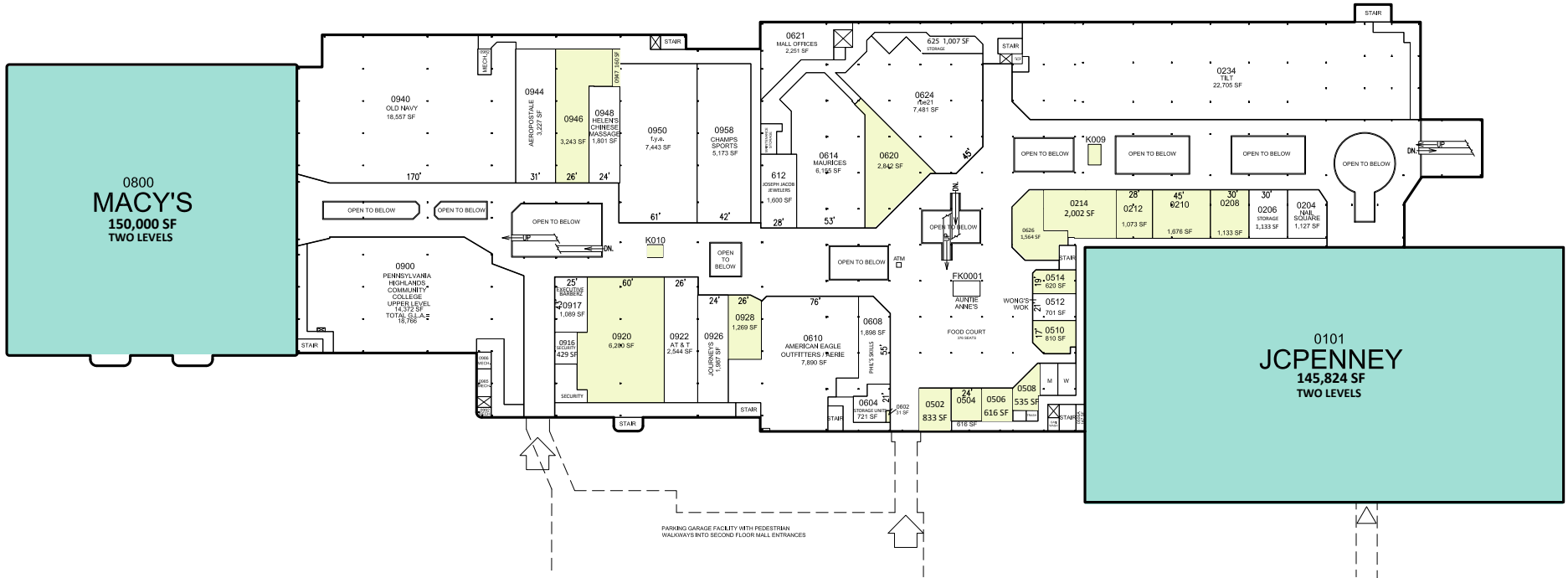
5580 Goods Lane - Altoona, PA 16602



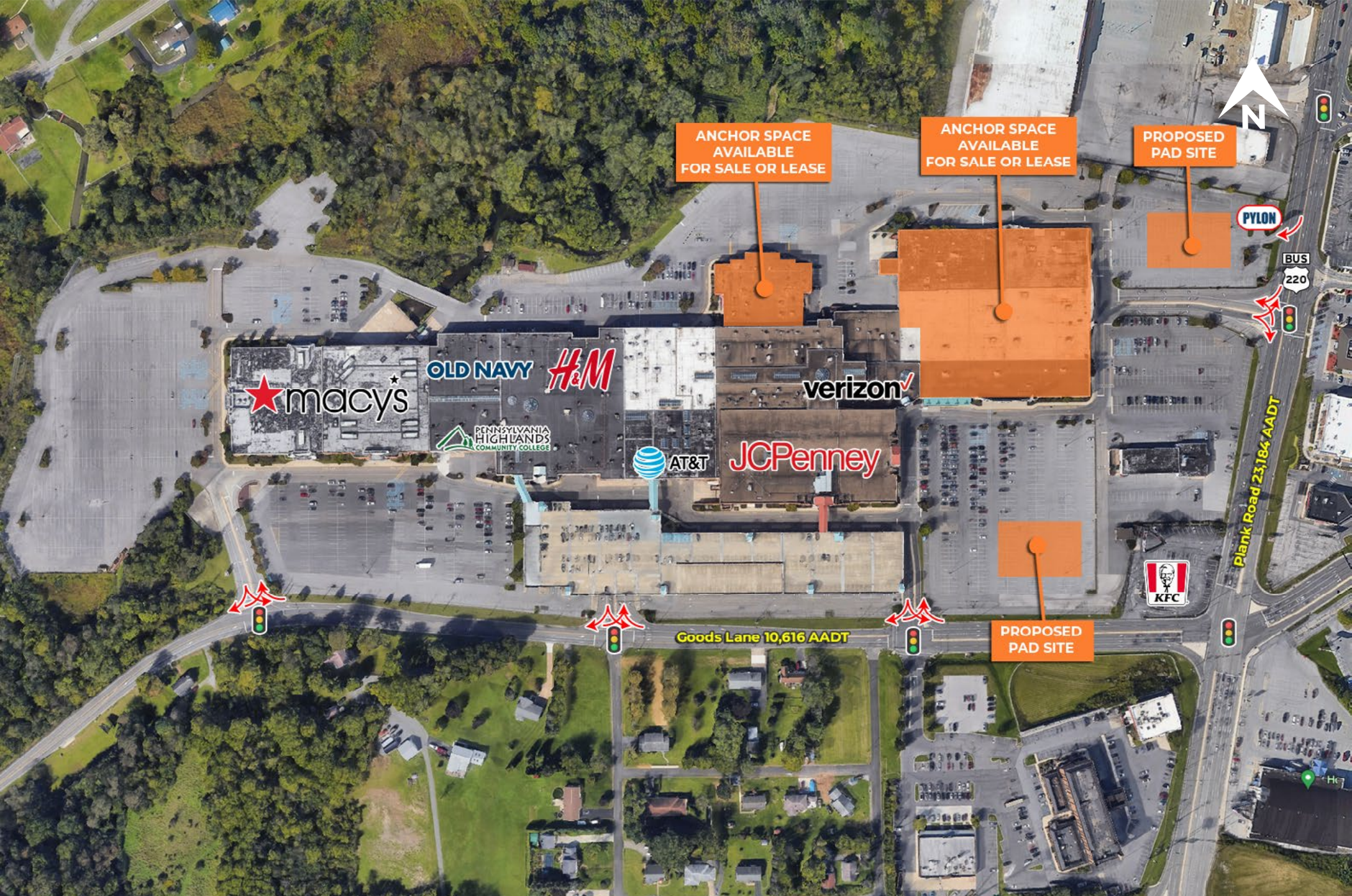
# Leasing Plan

# Logan Valley Mall - Upper Level

5580 Goods Lane - Altoona, PA 16602



# Leasing Plan



ANCHOR SPACE  
AVAILABLE  
FOR SALE OR LEASE

ANCHOR SPACE  
AVAILABLE  
FOR SALE OR LEASE

PROPOSED  
PAD SITE

PROPOSED  
PAD SITE

macy's

OLD NAVY

H&M

verizon

JCPenney

AT&T

PENNSYLVANIA  
HIGHLANDS  
COMMUNITY COLLEGE

KFC

PYLON

BUS  
220

Plank Road 23,184 AADT

Goods Lane 10,616 AADT

# Zoom Aerial





**LOGAN VALLEY MALL**

# Local Aerial

The information and images contained herein are from sources deemed reliable. However, J.C.BAR Properties, Inc. makes no representation whatsoever as to their accuracy or authenticity. Images shown may be modified for illustrative purposes. Images may be out-of-date and not current.



**LOGAN VALLEY MALL**

**LOWE'S**

**THE HOME DEPOT**

**HOBBY LOBBY Gabe's**

**MARTIN'S**

**Lakemont PARK**

# Market Aerial

The information and images contained herein are from sources deemed reliable. However, J.C.BAR Properties, Inc. makes no representation whatsoever as to their accuracy or authenticity. Images shown may be modified for illustrative purposes. Images may be out-of-date and not current.