

# Kendig Square

2600 Willow Street Pike - Lancaster County, PA 17584

±2,316 - 12,375 SF Available for Lease



## Questions? Contact Us.

**Melissa Lippe**

[MLippe@jcbarprop.com](mailto:MLippe@jcbarprop.com)

p. 610-206-3319

c. 215-264-6964

**Rob V. Gothier, III**

[RG3@jcbarprop.com](mailto:RG3@jcbarprop.com)

p. 717-761-7801

c. 717-712-4601

# Kendig Square

2600 Willow Street Pike - Lancaster County, PA 17584

±2,316 - 12,375 SF Available for Lease

## Highlights

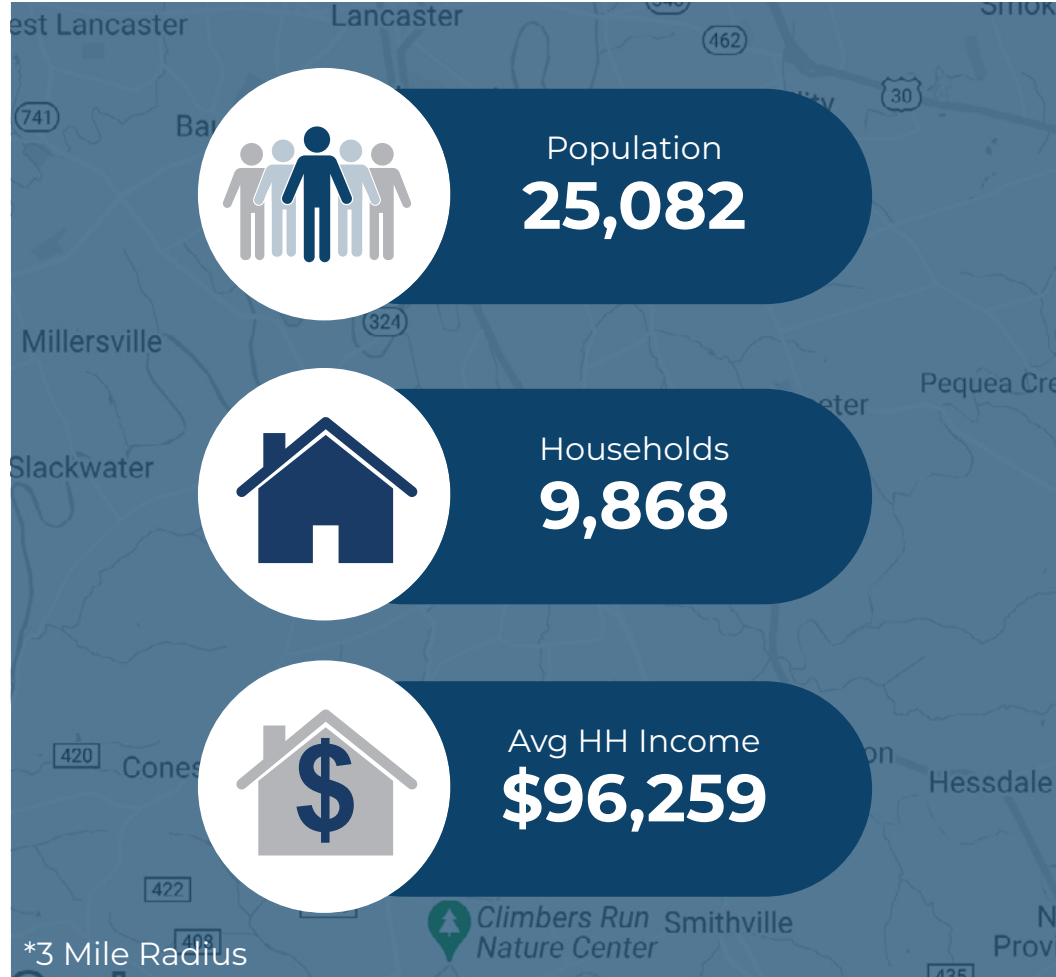
- Located in Lancaster County with 60,000 residents within a 7-mile span
- Anchored by Weis Grocery Store
- Three Pylons available
- Access from Willow Street Pike (20,026 AADT Combined) and Long Lane (15,584 AADT)
- Last remaining vacancy available with loading capabilities available
- GLA: 268,728 SF

JOIN

**weis** PET SUPPLIES PLUS **verizon**✓



| Demographic       | 1 Mile   | 3 Miles  | 5 Miles  |
|-------------------|----------|----------|----------|
| Population        | 6,906    | 25,082   | 129,076  |
| Households        | 3,266    | 9,868    | 49,824   |
| Avg HH Income     | \$85,548 | \$96,259 | \$80,728 |
| Daytime Employees | 4,529    | 7,402    | 57,971   |



Questions? Contact Us.

**Melissa Lippe**  
 MLippe@jcbarprop.com  
 p. 610-206-3319  
 c. 215-264-6964

**Rob V. Gothier, III**  
 RG3@jcbarprop.com  
 p. 717-761-7801  
 c. 717-712-4601

# Kendig Square

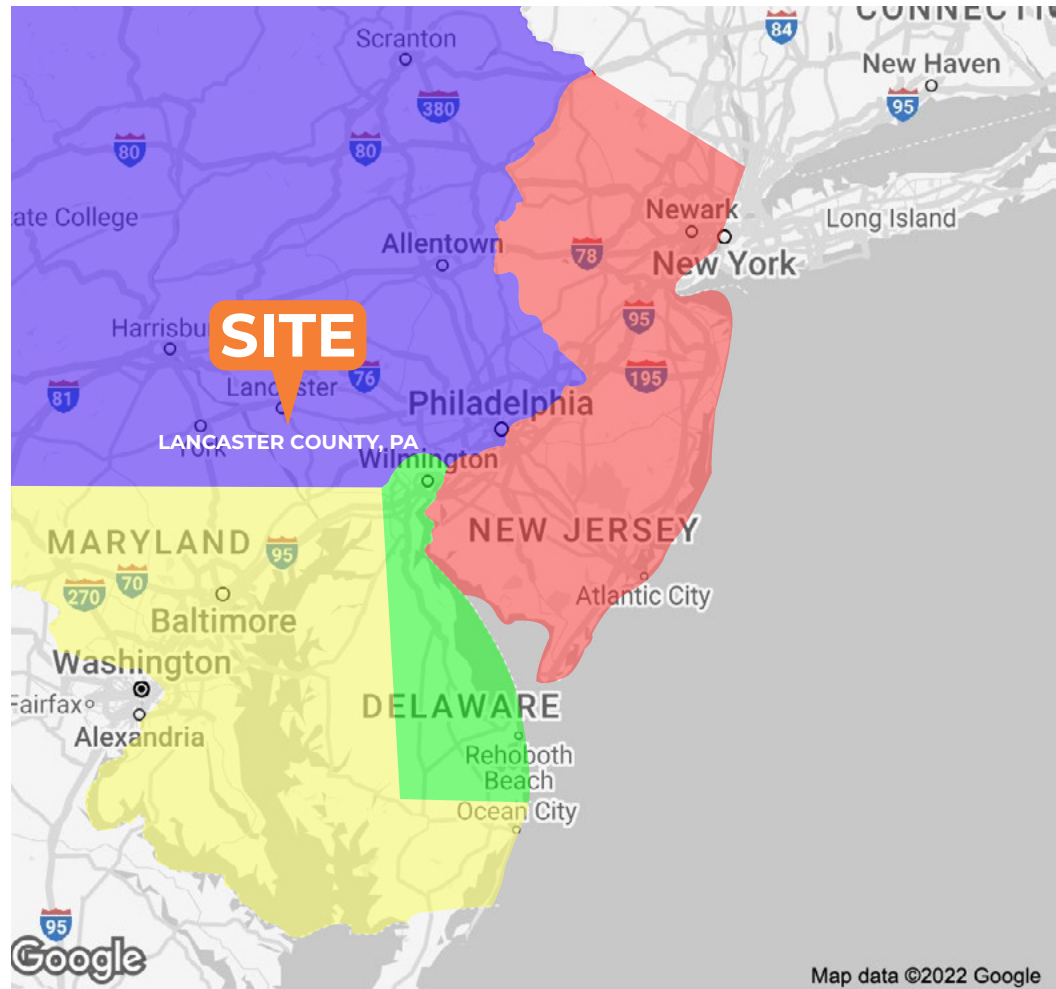
2600 Willow Street Pike - Lancaster County, PA 17584

±2,316 - 12,375 SF Available for Lease

## About Lancaster

The region lies along The Susquehanna River to its east, covering nearly 1,000 square miles. Tourism is a significant industry in Lancaster County, employing approximately 20,000 people. The local Amish Community, second largest Amish settlement in the world, draws large crowds annually. Lancaster County also serves as home to many Colleges and Universities – Millersville University, Franklin & Marshall College, Elizabethtown College and many others.

As of 2021, Lancaster County was home to 551,000+ residents. The County continues to experience tremendous residential and commercial development supported by improving demographic trends, further elevating the market as a premier retail destination. This is highlighted by two major mixed-use developments with total project costs in excess of \$100 million bringing new, blue-chip and highly selective retailers to the market such as Whole Foods, Wegmans and Nordstrom Rack. The Crossings at Conestoga is a \$120 million development that includes 258 Class A apartments, a 200,000 square foot, Wegmans anchored retail center and a 127-suite Marriot hotel. The recently delivered 365,000 square foot Shoppes at Belmont, features a Whole Foods and nearly 100 residential units. As demonstrated by the recent addition of best-in-class tenants, the status of Lancaster County continues to improve, and it is profiled as one of the top locations within the Philadelphia MSA.



## Questions? Contact Us.

**Melissa Lippe**  
MLippe@jcbarprop.com  
p. 610-206-3319  
c. 215-264-6964

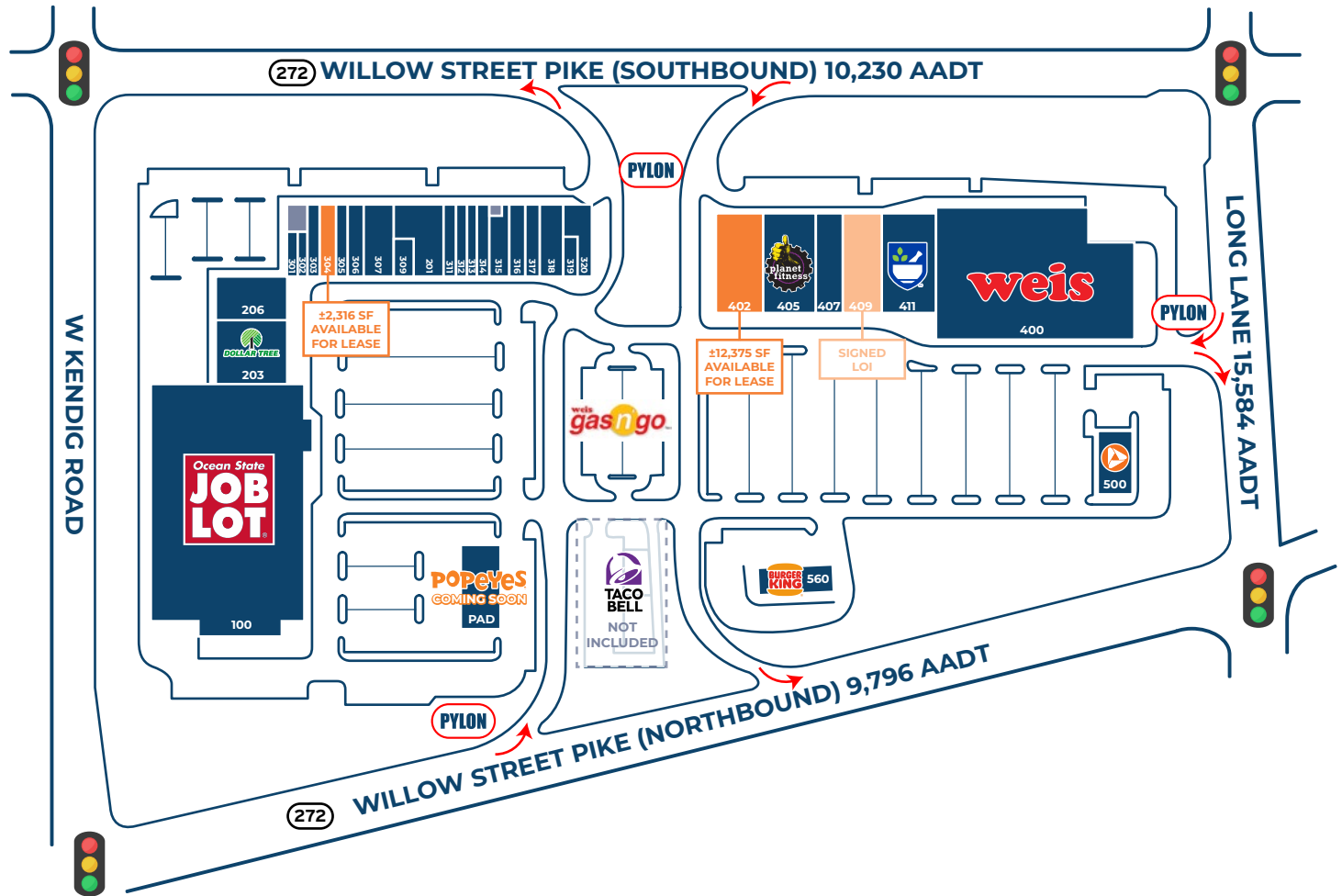
**Rob V. Gothier, III**  
RG3@jcbarprop.com  
p. 717-761-7801  
c. 717-712-4601

# Kendig Square

2600 Willow Street Pike, Willow Street (Lancaster County), PA 17584



| Unit       | Tenant                   | Square Footage     |
|------------|--------------------------|--------------------|
| 100        | Ocean State Job Lot      | ±88,479 SF         |
| 201        | Dollar General           | ±6,300 SF          |
| 203        | Dollar Tree              | ±10,397 SF         |
| 206        | Goodwill                 | ±8,200 SF          |
| 301        | Nails Only               | ±969 SF            |
| 302        | Subway                   | ±1,254 SF          |
| 303        | Smooth Vape              | ±2,283 SF          |
| <b>304</b> | <b>AVAILABLE</b>         | <b>±2,316 SF</b>   |
| 305        | Sal's Pizza              | ±2,428 SF          |
| 306        | Golden Wall Restaurant   | ±1,760 SF          |
| 307        | Fine Wine & Good Spirits | ±5,134 SF          |
| 309        | The UPS Store            | ±1,500 SF          |
| 311        | GNC                      | ±1,918 SF          |
| 312        | Wasabi Japanese          | ±2,529 SF          |
| 313        | Pizza Hut                | ±1,200 SF          |
| 314        | H&R Block                | ±1,980 SF          |
| 315        | Verizon                  | ±3,025 SF          |
| 316        | Pearle Vision            | ±2,132 SF          |
| 317        | T-Mobile                 | ±2,132 SF          |
| 318        | Pet Supplies Plus        | ±4,290 SF          |
| 319        | Holiday Hair             | ±1,200 SF          |
| 320        | George's Restaurant      | ±4,259 SF          |
| 400        | Weis                     | ±60,284 SF         |
| <b>402</b> | <b>AVAILABLE</b>         | <b>±12,375 SF</b>  |
| 405        | Planet Fitness           | ±13,171 SF         |
| 407        | Hallmark                 | ±4,000 SF          |
| <b>409</b> | <b>SIGNED LOI</b>        | <b>±8,800 SF</b>   |
| 411        | Rite Aid                 | ±10,950 SF         |
| 500        | PNC Bank                 | ±4,874 SF          |
| 560        | Burger King              | PAD                |
| PAD        | Popeyes (Coming Soon)    | PAD                |
| PAD        | Taco Bell                | PAD                |
|            | <b>Total SF</b>          | <b>±268,728 SF</b> |



# Site Plan

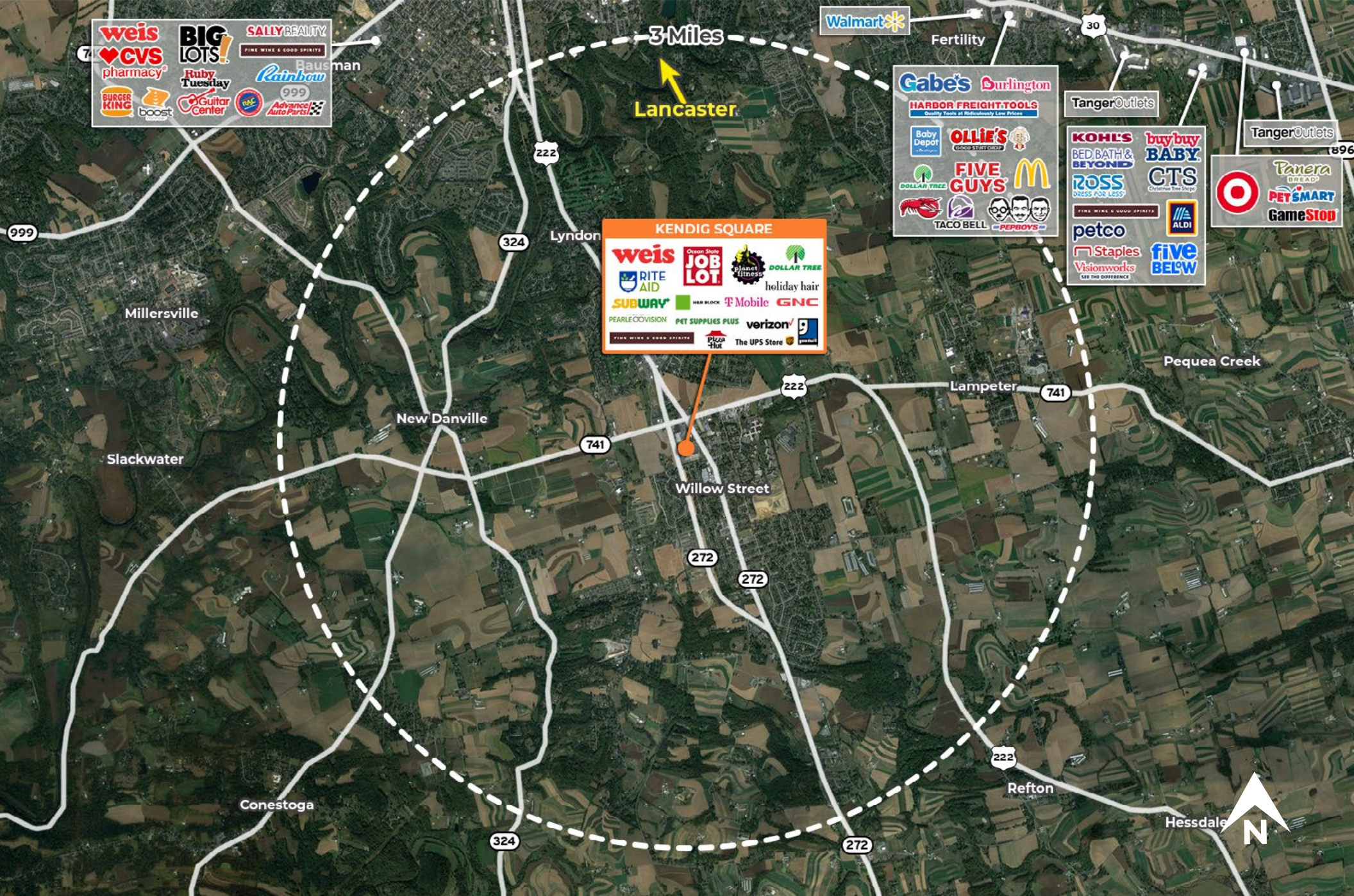


**NEW PYLON  
COMING SOON**



# Local Aerial

The information and images contained herein are from sources deemed reliable. However, J.C.BAR Properties, Inc. makes no representation whatsoever as to their accuracy or authenticity. Images shown may be modified for illustrative purposes. Images may be out-of-date and not current.



# Market Aerial