

4.6 Acre Outparcel Available

Marketplace Way, Enola, PA 17025

4.6 Acre Development Parcel Available For Sale or Lease



Questions? Contact Us.

Melissa Lippe

MLippe@jcbarprop.com
p. 610-206-3319
c. 215-264-6964

Rob V. Gothier, III

RG3@jcbarprop.com
p. 717-761-7801
c. 717-712-4601

4.6 Acre Outparcel Available

Marketplace Way, Enola, PA 17025

4.6 Acre Development Parcel Available For Sale or Lease

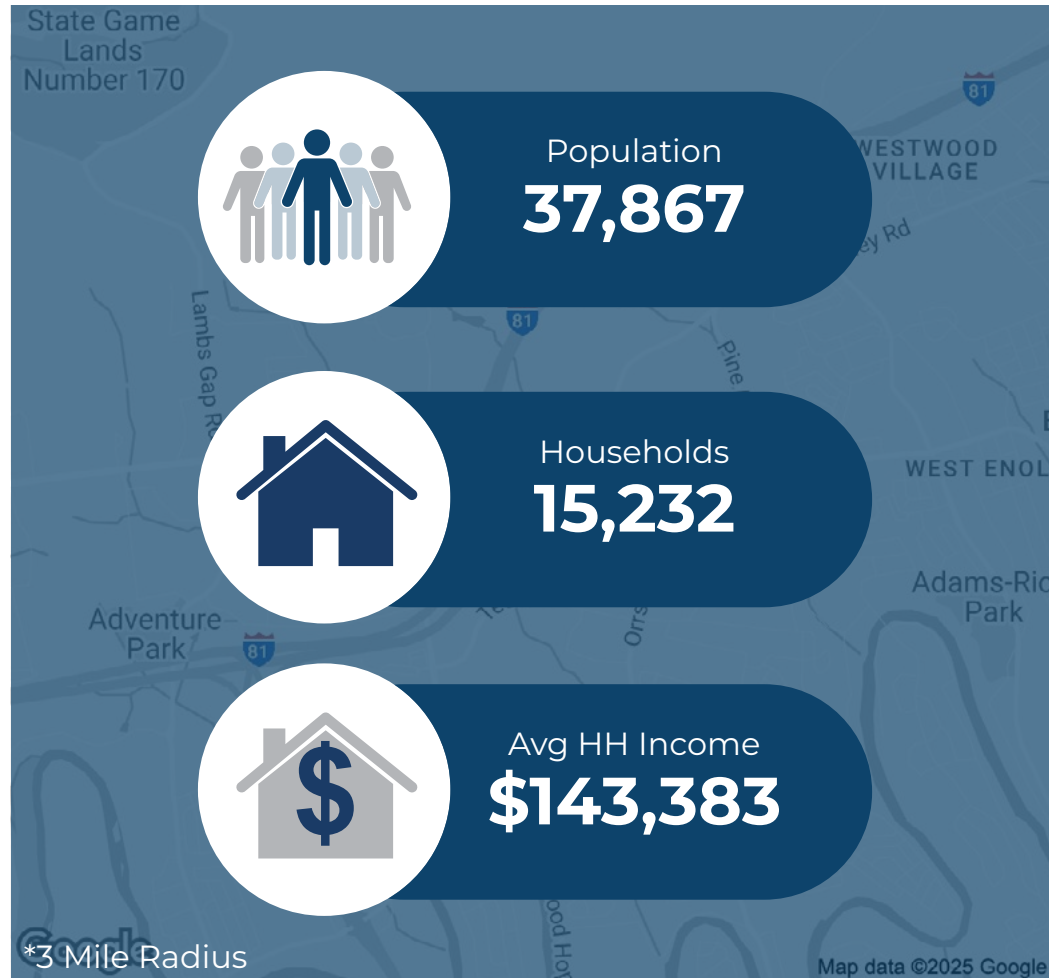
Highlights

- Riverside-Conveniently located just off I-81 at Wertzville Road (Rt. 944): 19,145 AADT
- Across from 1-Million SF Cumberland Technology Park and UPMC West Shore with 11,000 employees
- Growing area with mix of office, hospital, restaurants, and other commercial amenities
- Average Household Incomes \$115K within 3-mile radius
- GLA ±98,000 SF

JOIN



Demographic	1 Mile	3 Miles	5 Miles
Population	3,811	37,867	102,552
Households	1,581	15,232	42,630
Avg HH Income	\$153,977	\$143,383	\$122,693
Daytime Employees	1,772	5,393	52,680



Questions? Contact Us.

Melissa Lippe
MLippe@jcbarprop.com
p. 610-206-3319
c. 215-264-6964

Rob V. Gothier, III
RG3@jcbarprop.com
p. 717-761-7801
c. 717-712-4601

4.6 Acre Outparcel Available

Marketplace Way, Enola, PA 17025

4.6 Acre Development Parcel Available For Sale or Lease

About Enola

Enola, PA is a small borough located in Cumberland County, just across the Susquehanna River from Harrisburg. Established in the 19th century, it has a rich history tied to the railroad and agriculture. Enola is known for its residential communities and family-friendly atmosphere. The area features parks, schools, and local businesses, making it a pleasant suburban locale. It also serves as a hub for transportation, with easy access to major highways and rail lines, contributing to its appeal for commuters. The community often hosts local events, fostering a strong sense of community spirit among residents.



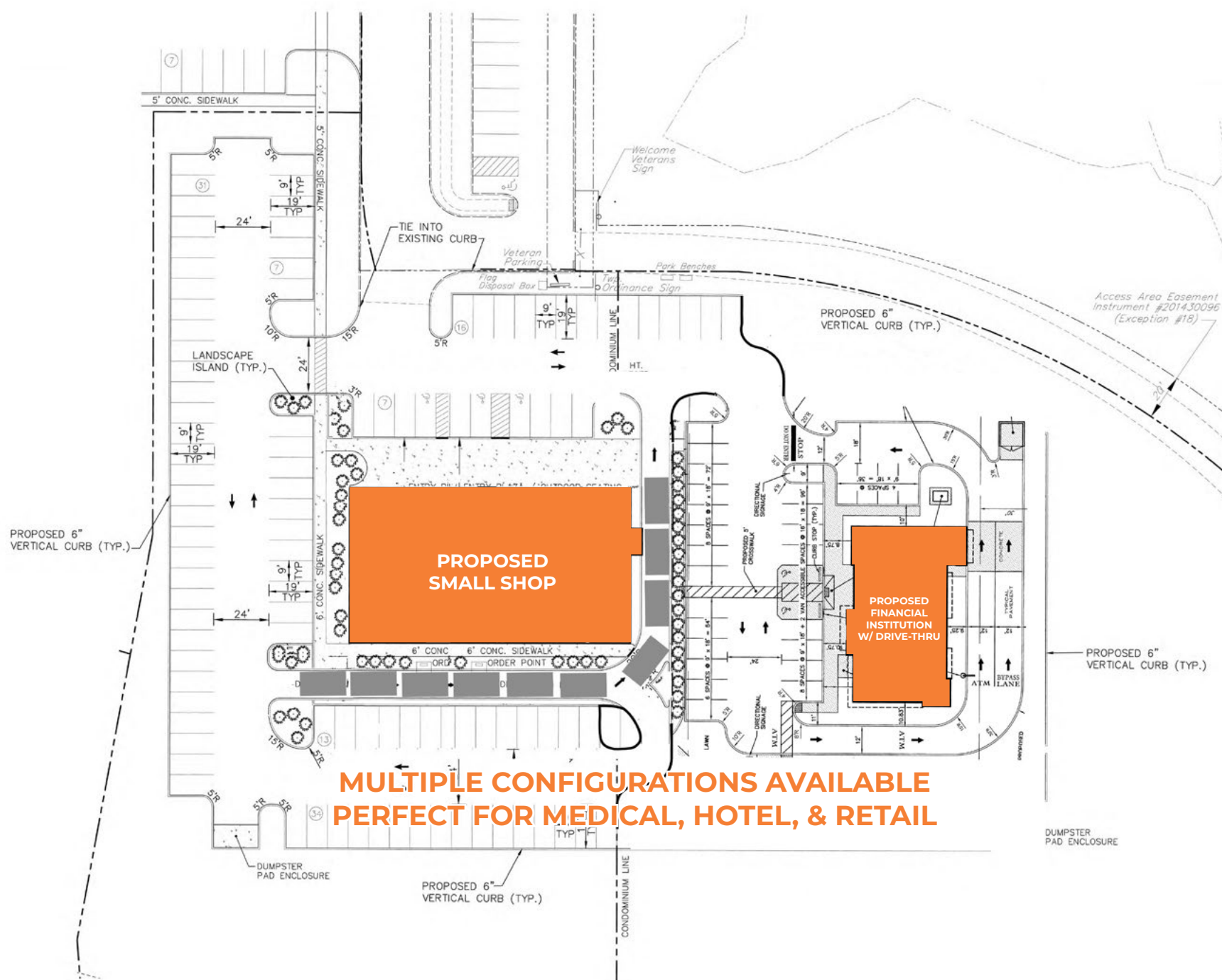
Questions? Contact Us.

Melissa Lippe

MLippe@jcbarprop.com
p. 610-206-3319
c. 215-264-6964

Rob V. Gothier, III

RG3@jcbarprop.com
p. 717-761-7801
c. 717-712-4601





Local Aerial



Local Aerial



Market Aerial