

Hamilton Mall

Total Mall GLA:
±1,075,246 SF

4403 E Black Horse Pike - Mays Landing, NJ 08330

±39,401 SF Coming Available October 31, 2025! | ±445-8,409 SF of Mall Retail Space For Lease



Questions? Contact Us.

Greg Jones

GJones@jcbarprop.com
p. 610-234-6491
c. 484-948-5217

Brett Davidoff

BDavidoff@jcbarprop.com
p. 610-234-6491
c. 609-320-1145

Hamilton Mall

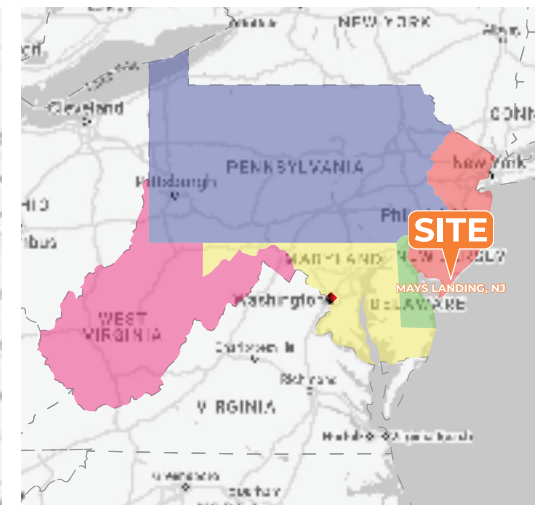
4403 E Black Horse Pike - Mays Landing, NJ 08330

±39,401 SF Coming Available October 31, 2025! | ±445-8,409 SF of Mall Retail Space For Lease

Total Mall GLA:
±1,075,246 SF

Highlights

- Property is located at the intersections of E Black Horse Pike and Wrangleboro Road
- Benefits from an easily accessible and highly visible location directly off E Black Horse Pike and Wrangleboro Rd. with direct access to the Atlantic City Expressway
- Enjoys a strong competitive position as the only enclosed regional mall within a 25-mile radius, with the next nearest center approximately 27 miles west in Vineland, NJ



Major Employers

- AtlantiCare
- Hard Rock Hotel & Casino
- Borgata Hotel Casino & Spa
- Caesars Entertainment
- Shore Medical Center
- SJTA
- Stockton University
- Atlantic County Government
- Atlantic Cape Community College
- Valley National Bank
- Ocean Casino Resort
- Resorts Casino Hotel
- Golden Nugget Casino
- Marriott Courtyard
- Walmart
- The Home Depot
- ShopRite
- ACME Markets
- Lowe's
- Cigna
- Amazon
- Cedar Creek Manufacturing
- Exelon
- Prudential Financial
- Bristol-Myers Squibb

Questions? Contact Us.

Greg Jones

GJones@jcbarprop.com
p. 610-234-6491
c. 484-948-5217

Brett Davidoff

BDavidoff@jcbarprop.com
p. 610-234-6491
c. 609-320-1145

JOIN

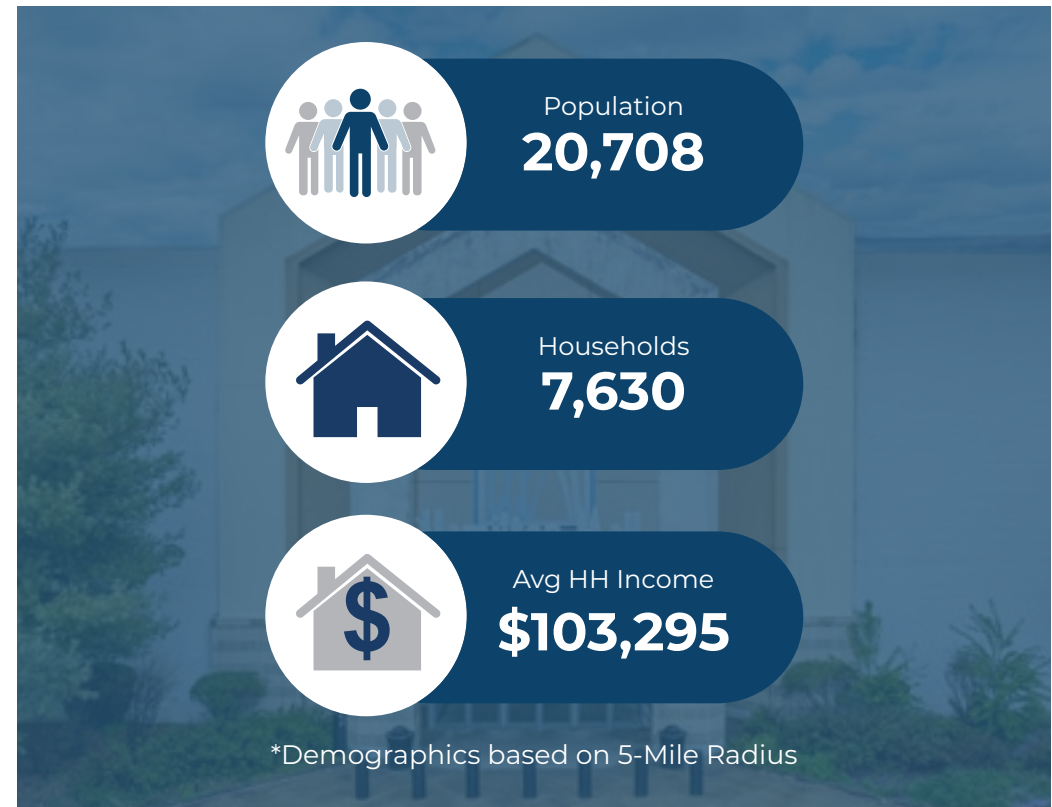
  

| Demographic | 3 Miles | 5 Miles | 10 Miles |
|-------------------|----------|-----------|-----------|
| Population | 5,671 | 20,708 | 45,461 |
| Households | 2,395 | 7,630 | 16,725 |
| Avg HH Income | \$83,604 | \$103,295 | \$110,170 |
| Daytime Employees | 2,188 | 9,332 | 15,053 |

About Hamilton Mall

Hamilton Mall, located in Mays Landing, NJ, is a popular shopping destination in Atlantic County. Offering a wide variety of retail stores, restaurants, and entertainment options, the mall caters to shoppers with a diverse selection of brands and services. It features major retailers like Macy's, Home Living Furniture & Mattress, and Bob's Discount Furniture, along with specialty shops, making it a convenient and family-friendly spot for both residents and visitors. The mall is also home to several dining options, making it a complete destination for leisure and shopping.

Atlantic County, located in southern New Jersey, is known for its diverse blend of natural beauty, vibrant communities, and economic significance. Home to Atlantic City, one of the nation's most famous resort destinations, the county offers a wide range of attractions, including beautiful beaches, parks, and cultural venues. The region's economy thrives on tourism, gaming, healthcare, and education, with major employers like AtlantiCare and the casinos contributing to its workforce. Atlantic County is also known for its close-knit communities, excellent schools, and growing opportunities for business development.



Area Facts

Centre County Colleges

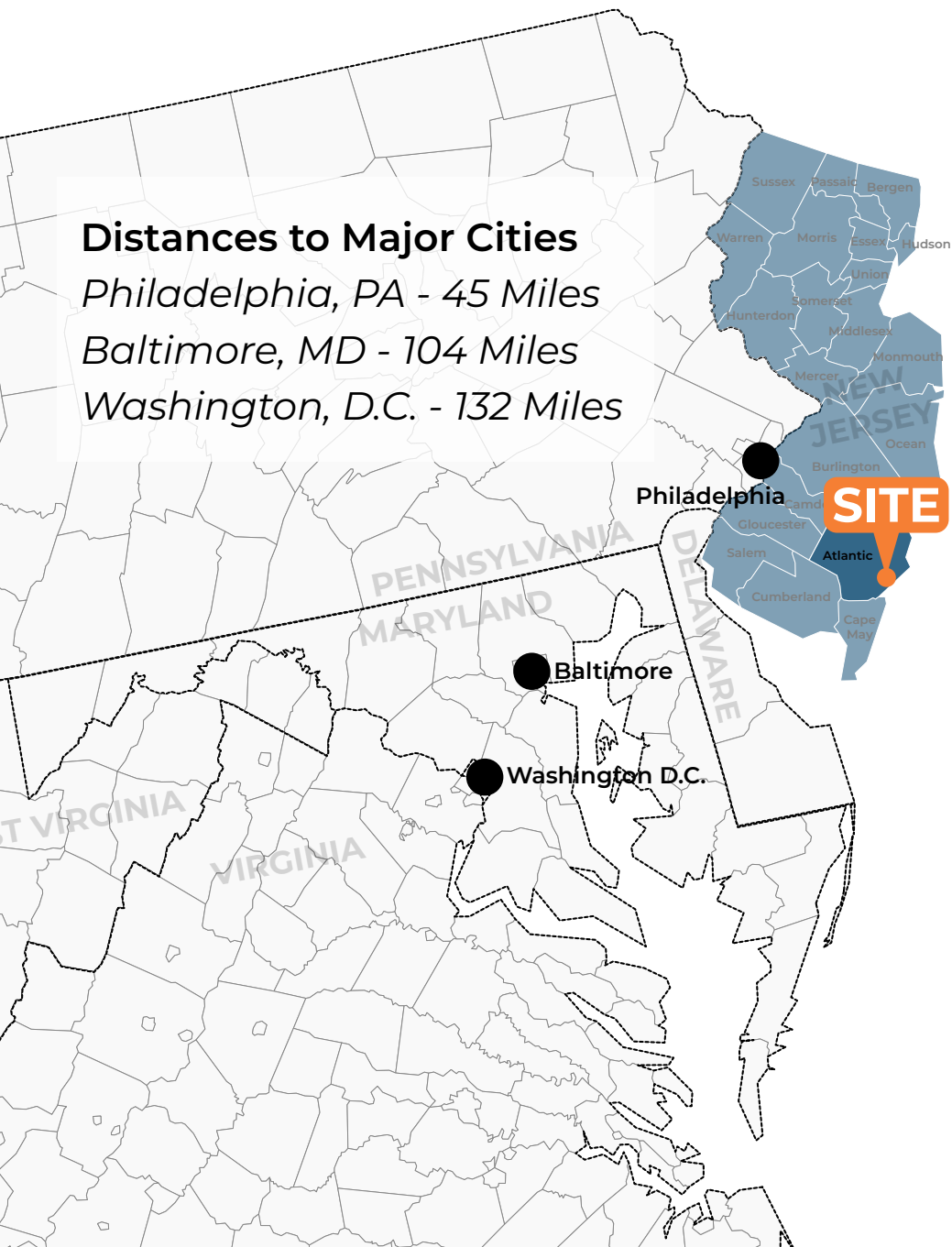
- Stockton University
- Atlantic Cape Community College
- Rutgers University (AC Campus)
- Culinary Arts Institute
- The University of Phoenix
- Princeton University (Satellite)
- Drexel University (AC Campus)

Major Employers

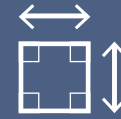
- AtlantiCare
- Hard Rock Hotel & Casino
- Borgata Hotel Casino & Spa
- Caesars Entertainment
- Shore Medical Center
- SJTA
- Stockton University

Major Attractions

- Atlantic City Boardwalk
- Atlantic City Casinos
- Absecon Lighthouse
- Lucy the Elephant
- Holtzman Wildlife Sanctuary
- Cape May County Park & Zoo



Site Information



±1,027,246 SF
Gross Leasable Area



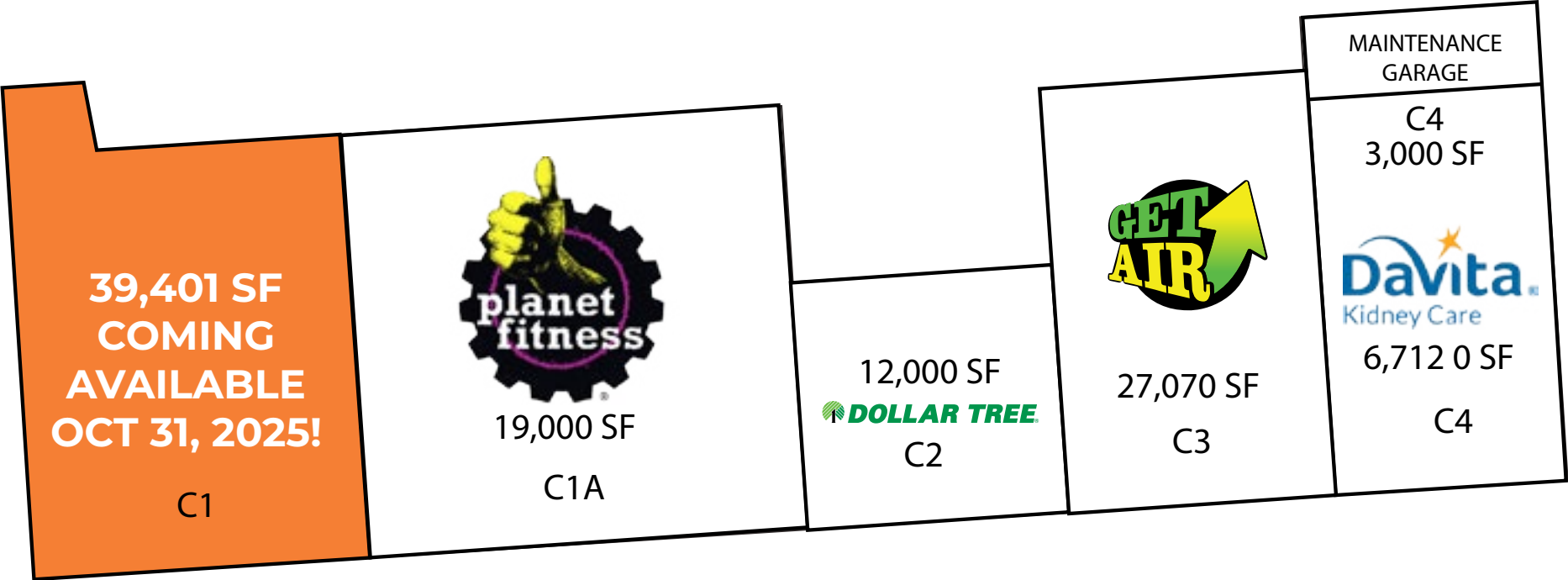
±50 ACRES
Land Size Area



4,197
Parking Spaces



15,053
Daytime Population
*Demographics based on 5-Mile Radius



LEASED AVAILABLE

Hamilton Mall

4403 E Black Horse Pike, Mays Landing, NJ 08330



*NOT OWNED

LEASED

AVAILABLE

Site Plan

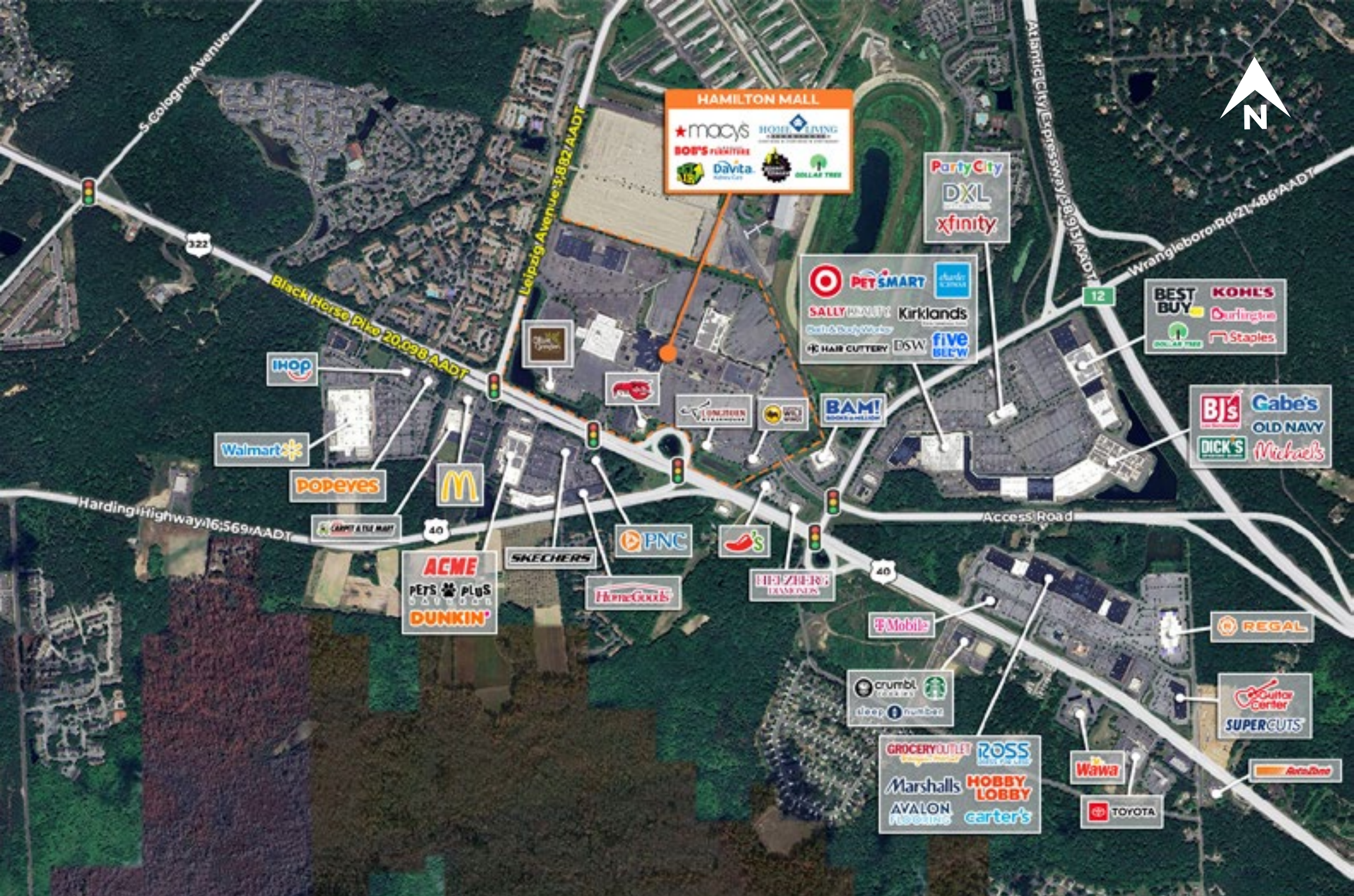


☐ LEASED ☒ AVAILABLE

Site Plan



Site Plan



Zoom Aerial



Market Aerial