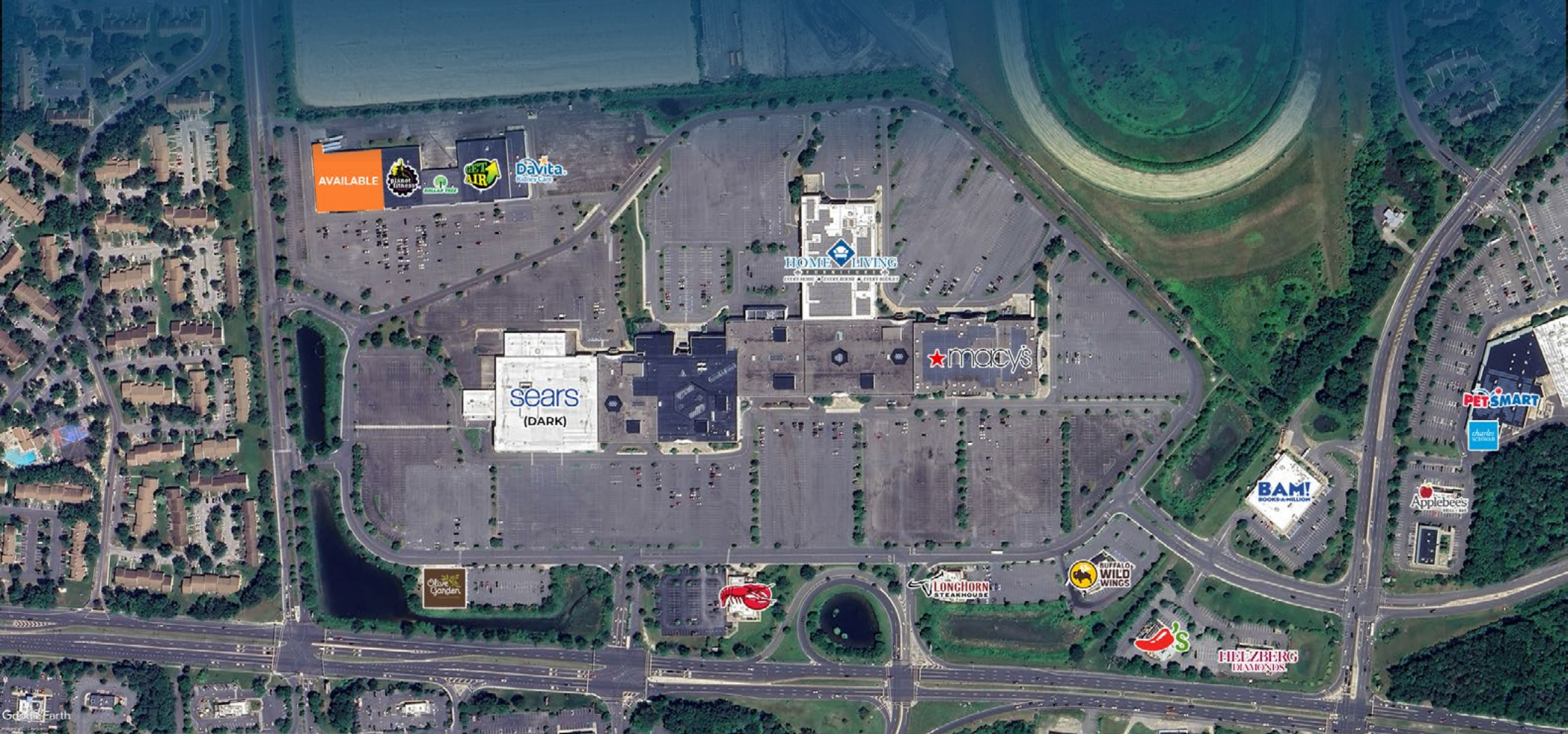


# Hamilton Mall

**Total Mall GLA:  
±1,075,246 SF**

**4403 E Black Horse Pike - Mays Landing, NJ 08330**

±39,401 SF Anchor Available For Lease | ±445-8,409 SF of Mall Retail Space For Lease



**Questions? Contact Us.**

**Greg Jones**

GJones@jcbarprop.com

p. 610-234-6491

c. 484-948-5217

# Hamilton Mall

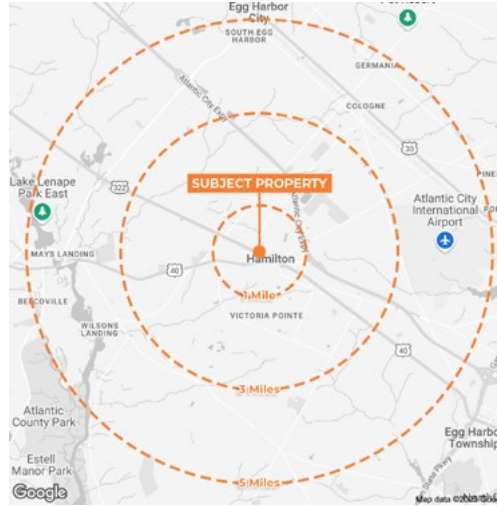
**Total Mall GLA:  
±1,075,246 SF**

**4403 E Black Horse Pike - Mays Landing, NJ 08330**

±39,401 SF Available For Lease | ±445-8,409 SF of Mall Retail Space For Lease

## Highlights

- Property is located at the intersections of E Black Horse Pike and Wrangleboro Road
- Benefits from an easily accessible and highly visible location directly off E Black Horse Pike and Wrangleboro Rd. with direct access to the Atlantic City Expressway
- Enjoys a strong competitive position as the only enclosed regional mall within a 25-mile radius, with the next nearest center approximately 27 miles west in Vineland, NJ



## Major Employers

- AtlantiCare
- Hard Rock Hotel & Casino
- Borgata Hotel Casino & Spa
- Caesars Entertainment
- Shore Medical Center
- SJTA
- Stockton University
- Atlantic County Government
- Atlantic Cape Community College
- Ocean Casino Resort
- Golden Nugget Casino
- Marriott Courtyard
- Walmart
- The Home Depot
- ShopRite
- ACME Markets
- Lowe's
- Cigna
- Amazon
- Cedar Creek Manufacturing
- Exelon
- Prudential Financial
- Bristol-Myers Squibb

**JOIN**

**DOLLAR TREE**

Demographic	3 Miles	5 Miles	10 Miles
Population	5,671	20,708	45,461
Households	2,395	7,630	16,725
Avg HH Income	\$83,604	\$103,295	\$110,170
Daytime Employees	2,188	9,332	15,053

## Questions? Contact Us.

**Greg Jones**

GJones@jcbarprop.com

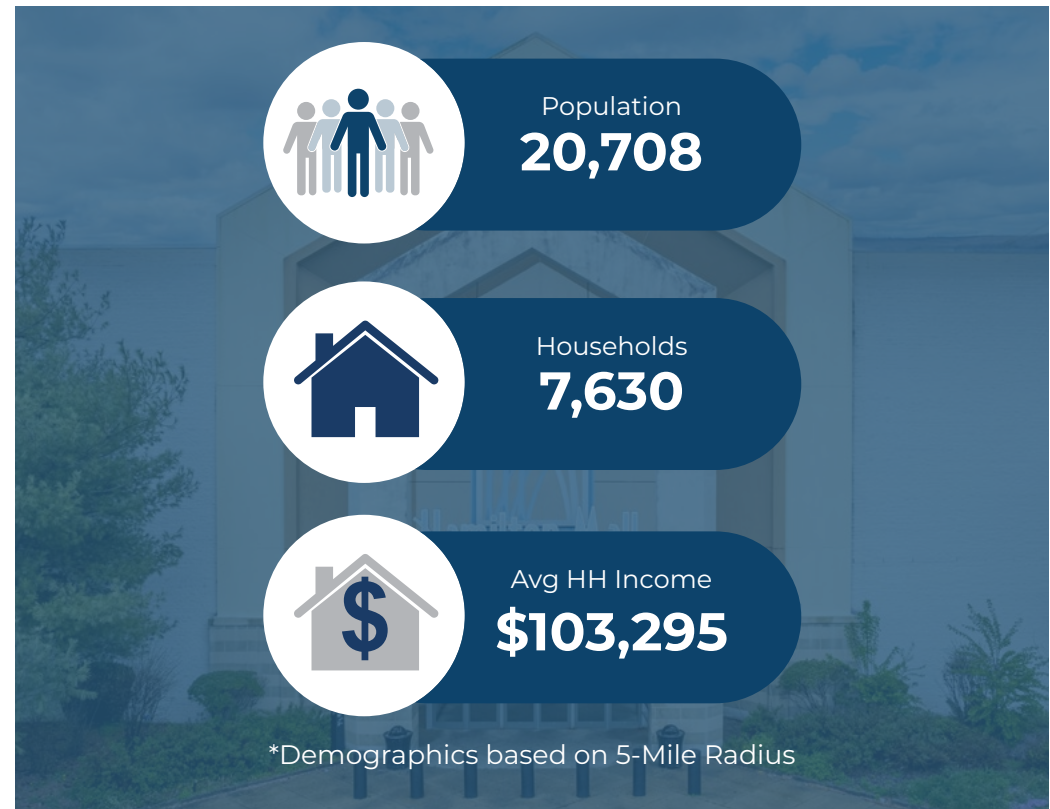
p. 610-234-6491

c. 484-948-5217

# About Hamilton Mall

Hamilton Mall, located in Mays Landing, NJ, is a popular shopping destination in Atlantic County. Offering a wide variety of retail stores, restaurants, and entertainment options, the mall caters to shoppers with a diverse selection of brands and services. It features major retailers like Macy's, Home Living Furniture & Mattress, along with specialty shops, making it a convenient and family-friendly spot for both residents and visitors. The mall is also home to several dining options, making it a complete destination for leisure and shopping.

Atlantic County, located in southern New Jersey, is known for its diverse blend of natural beauty, vibrant communities, and economic significance. Home to Atlantic City, one of the nation's most famous resort destinations, the county offers a wide range of attractions, including beautiful beaches, parks, and cultural venues. The region's economy thrives on tourism, gaming, healthcare, and education, with major employers like AtlantiCare and the casinos contributing to its workforce. Atlantic County is also known for its close-knit communities, excellent schools, and growing opportunities for business development.



## Area Facts

### Centre County Colleges

- Stockton University
- Atlantic Cape Community College
- Rutgers University (AC Campus)
- Culinary Arts Institute
- The University of Phoenix
- Princeton University (Satellite)
- Drexel University (AC Campus)

### Major Employers

- AtlantiCare
- Hard Rock Hotel & Casino
- Borgata Hotel Casino & Spa
- Caesars Entertainment
- Shore Medical Center
- SJTA
- Stockton University

### Major Attractions

- Atlantic City Boardwalk
- Atlantic City Casinos
- Absecon Lighthouse
- Lucy the Elephant
- Holtzman Wildlife Sanctuary
- Cape May County Park & Zoo

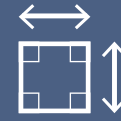
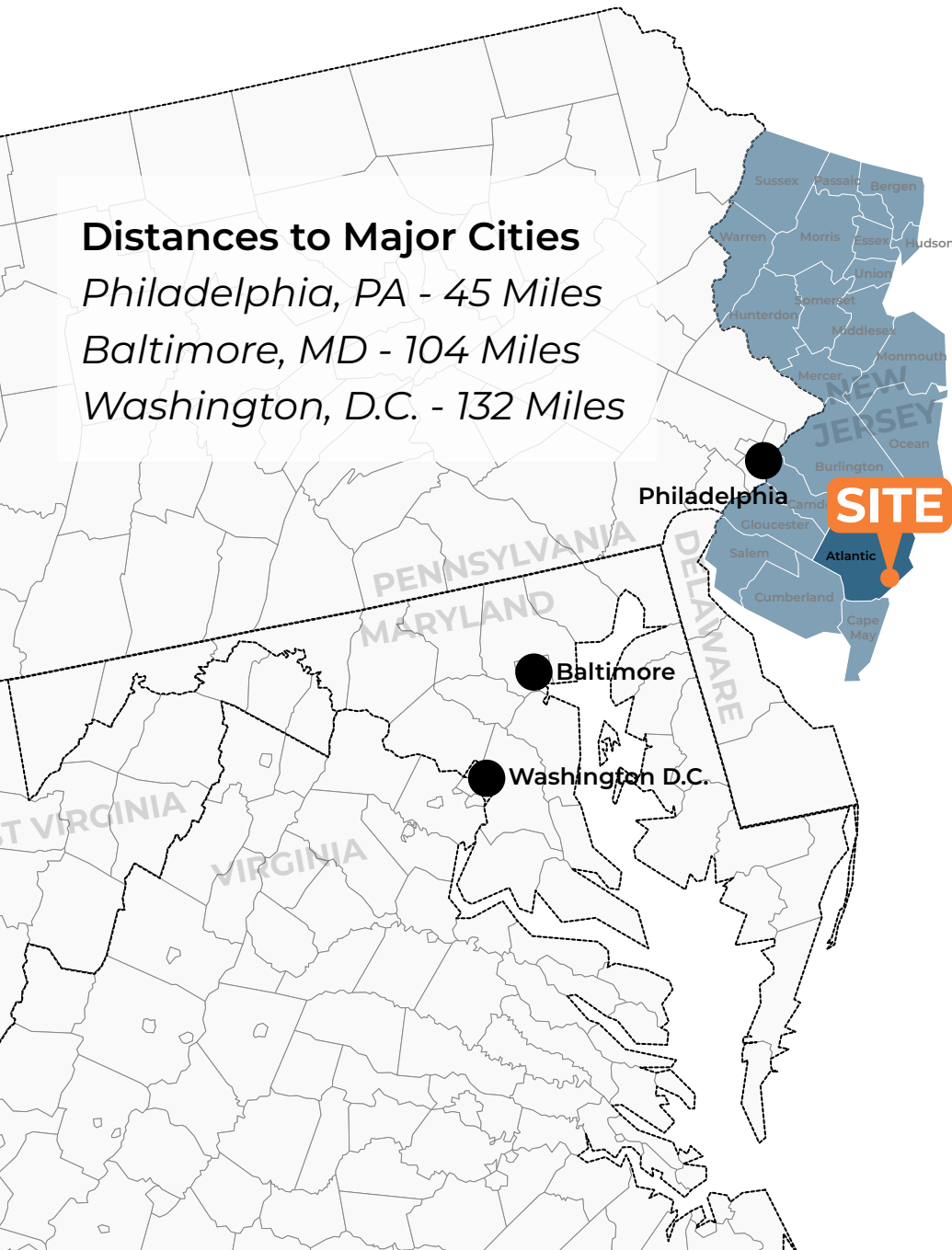
## Site Information

### Distances to Major Cities

Philadelphia, PA - 45 Miles

Baltimore, MD - 104 Miles

Washington, D.C. - 132 Miles



**±1,027,246 SF**  
Gross Leasable Area



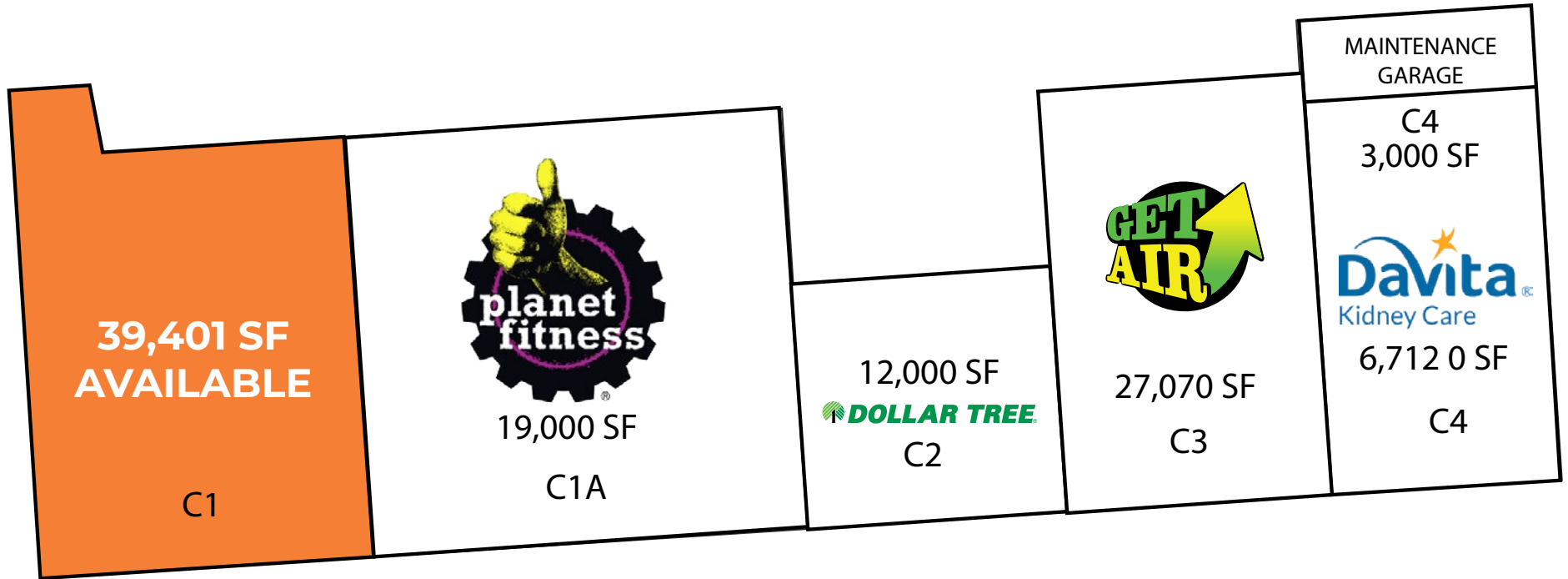
**±50 ACRES**  
Land Size Area



**4,197**  
Parking Spaces



**15,053**  
Daytime Population  
\*Demographics based on 5-Mile Radius

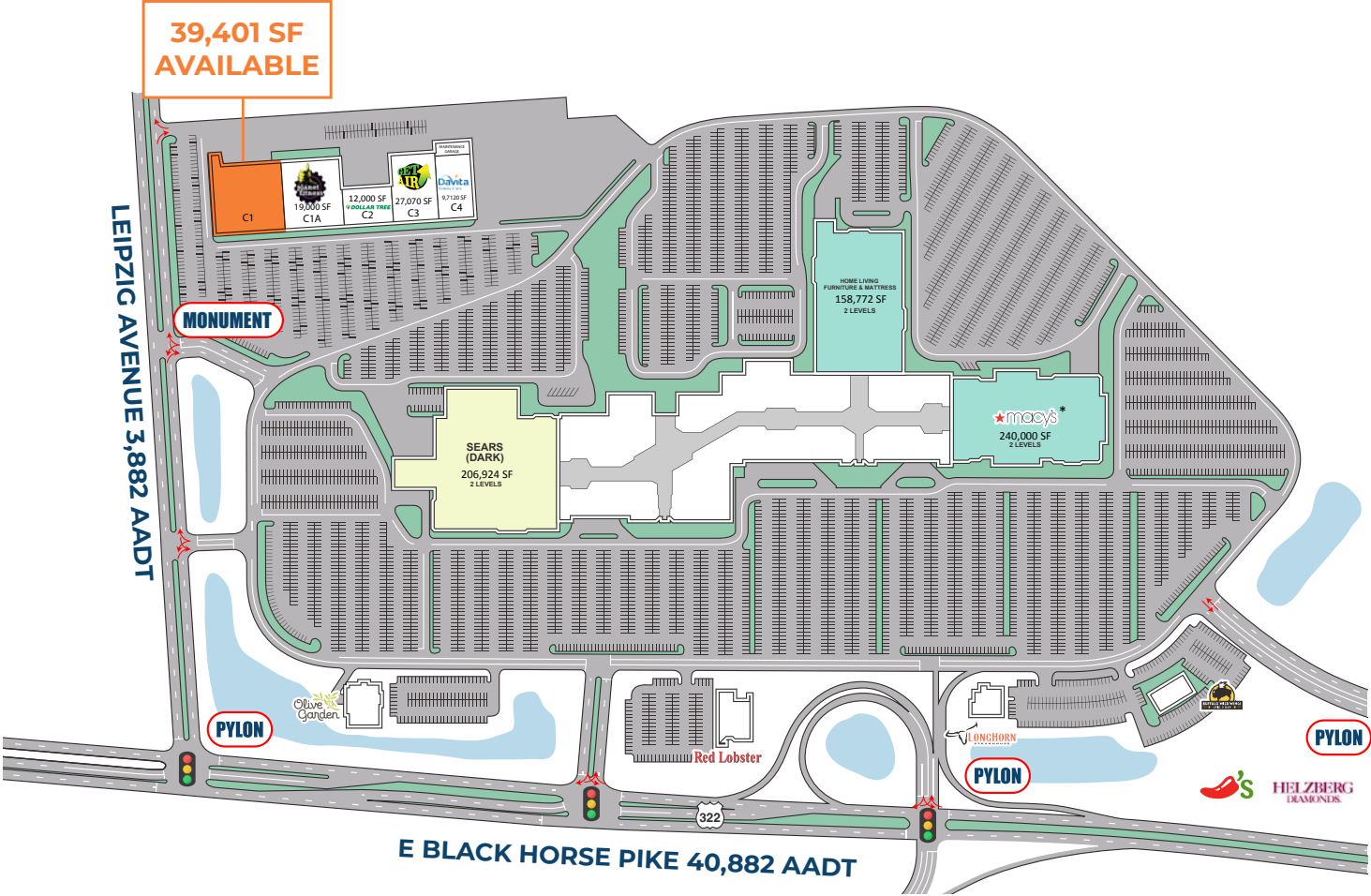


 LEASED  AVAILABLE

# Site Plan

# Hamilton Mall

4403 E Black Horse Pike, Mays Landing, NJ 08330



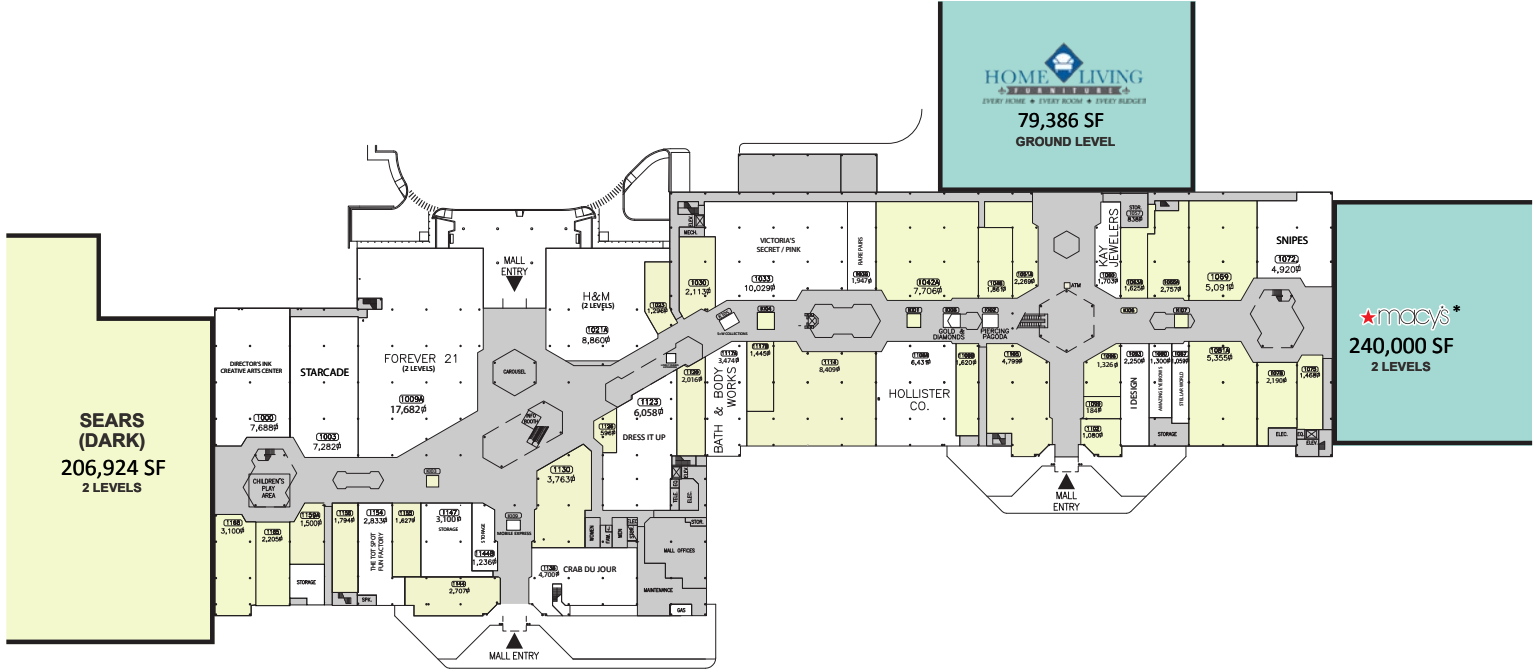
\*NOT OWNED

LEASED AVAILABLE

# Site Plan

The information and images contained herein are from sources deemed reliable. However, J.C.BAR Properties, Inc. makes no representation whatsoever as to their accuracy or authenticity. Images shown may be modified for illustrative purposes. Images may be out-of-date and not current.

# Ground Floor



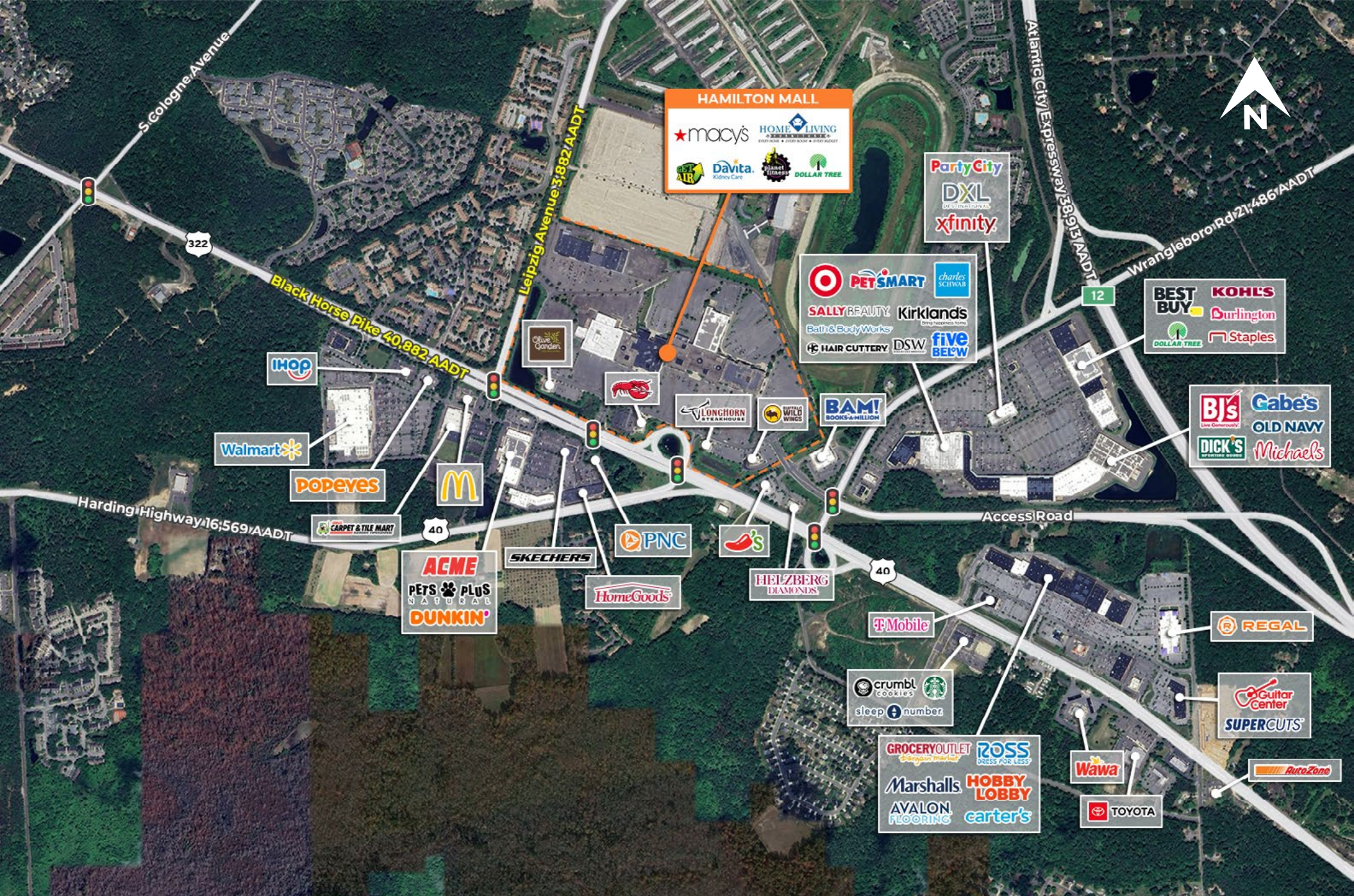
\*NOT OWNED



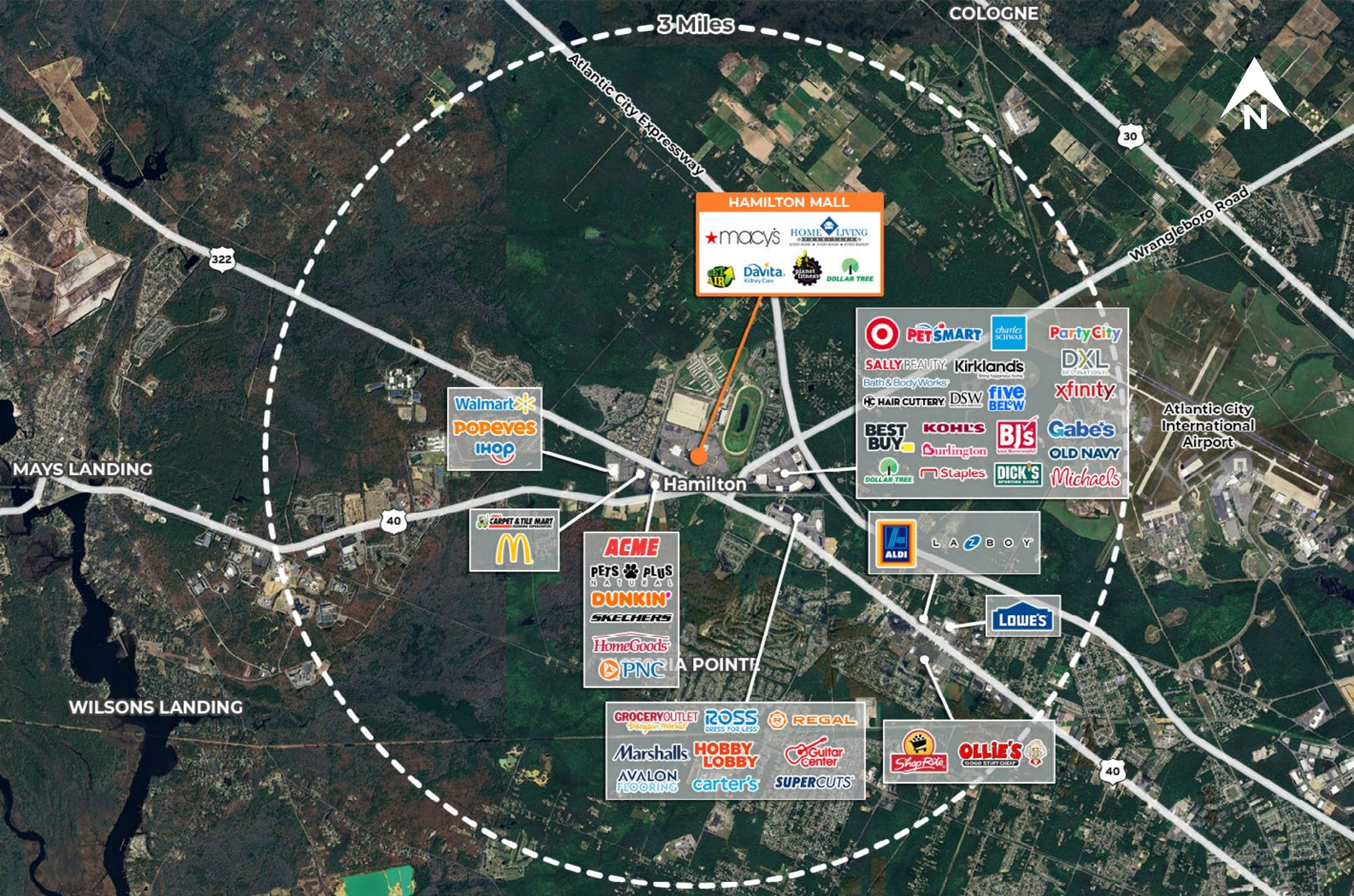
# Site Plan

The information and images contained herein are from sources deemed reliable. However, J.C.BAR Properties, Inc. makes no representation whatsoever as to their accuracy or authenticity. Images shown may be modified for illustrative purposes. Images may be out-of-date and not current.





# Zoom Aerial



# Market Aerial