

Girard Plaza

1100 W Girard Avenue - Philadelphia, PA

±1,567-4,185 SF Available Retail Space



±1,567 SF
AVAILABLE



Corporate Office
224 St. Charles Way, Suite 290
York, PA 17402

Conshohocken Office
100 Front Street, Suite 560
West Conshohocken, PA 19428

Questions? Contact Us.



Greg Jones
GJones@jcbarprop.com
p. 610-234-6491
c. 484-948-5217

Bakari White
BWhite@jcbarprop.com
p. 610-206-3319
c. 215-495-9756

Girard Plaza

1100 W Girard Avenue - Philadelphia, PA

±1,567-4,185 SF Available Retail Space

Highlights

- Situated along heavily traveled corridor, West Girard Avenue with 14,313 VPD
- Close proximity to Temple University and dense student and urban population
- Opportunity for medical, convenience or financial
- Strong visibility and signage presence on Girard Avenue
- Easily accessible to public transportation

JOIN **POPEYES** **DOLLAR TREE**

| Demographic | 0.5 Mile | 1 Mile | 1.5 Miles |
|-------------------|----------|----------|-----------|
| Population | 10,147 | 53,534 | 121,354 |
| Households | 6,345 | 31,375 | 70,032 |
| Avg HH Income | \$49,956 | \$72,649 | \$82,612 |
| Daytime Employees | 6,166 | 36,961 | 168,155 |



Corporate Office
224 St. Charles Way, Suite 290
York, PA 17402

Conshohocken Office
100 Front Street, Suite 560
West Conshohocken, PA 19428



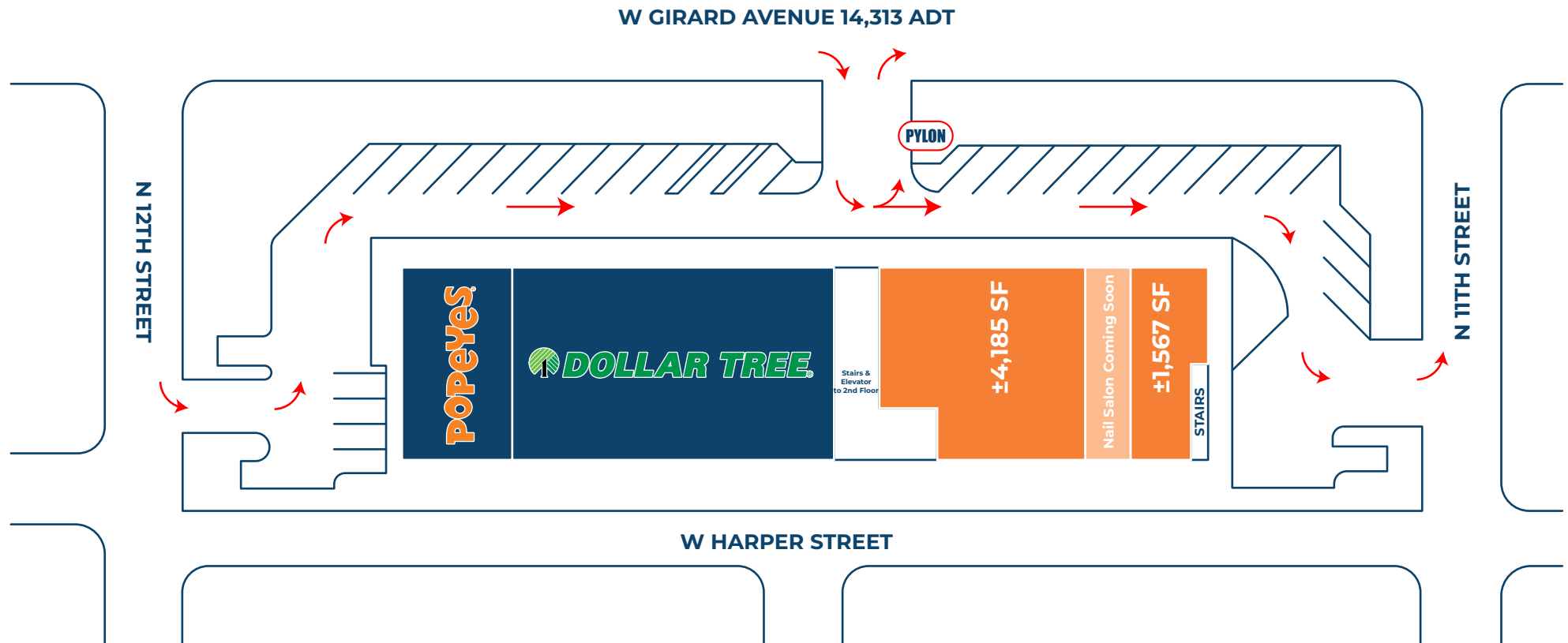
Questions? Contact Us.



Greg Jones
GJones@jcbarprop.com
p. 610-234-6491
c. 484-948-5217

Bakari White
BWhite@jcbarprop.com
p. 610-206-3319
c. 215-495-9756

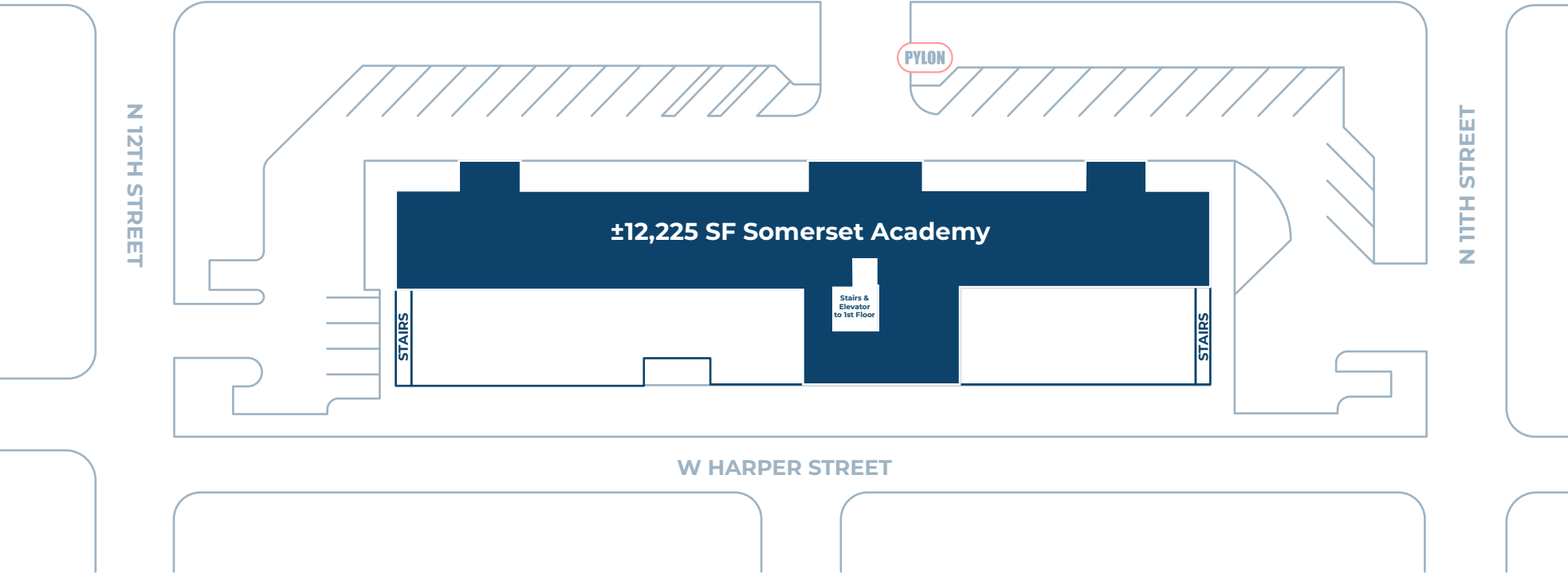
1st Floor



2nd Floor



W GIRARD AVENUE 14,313 ADT

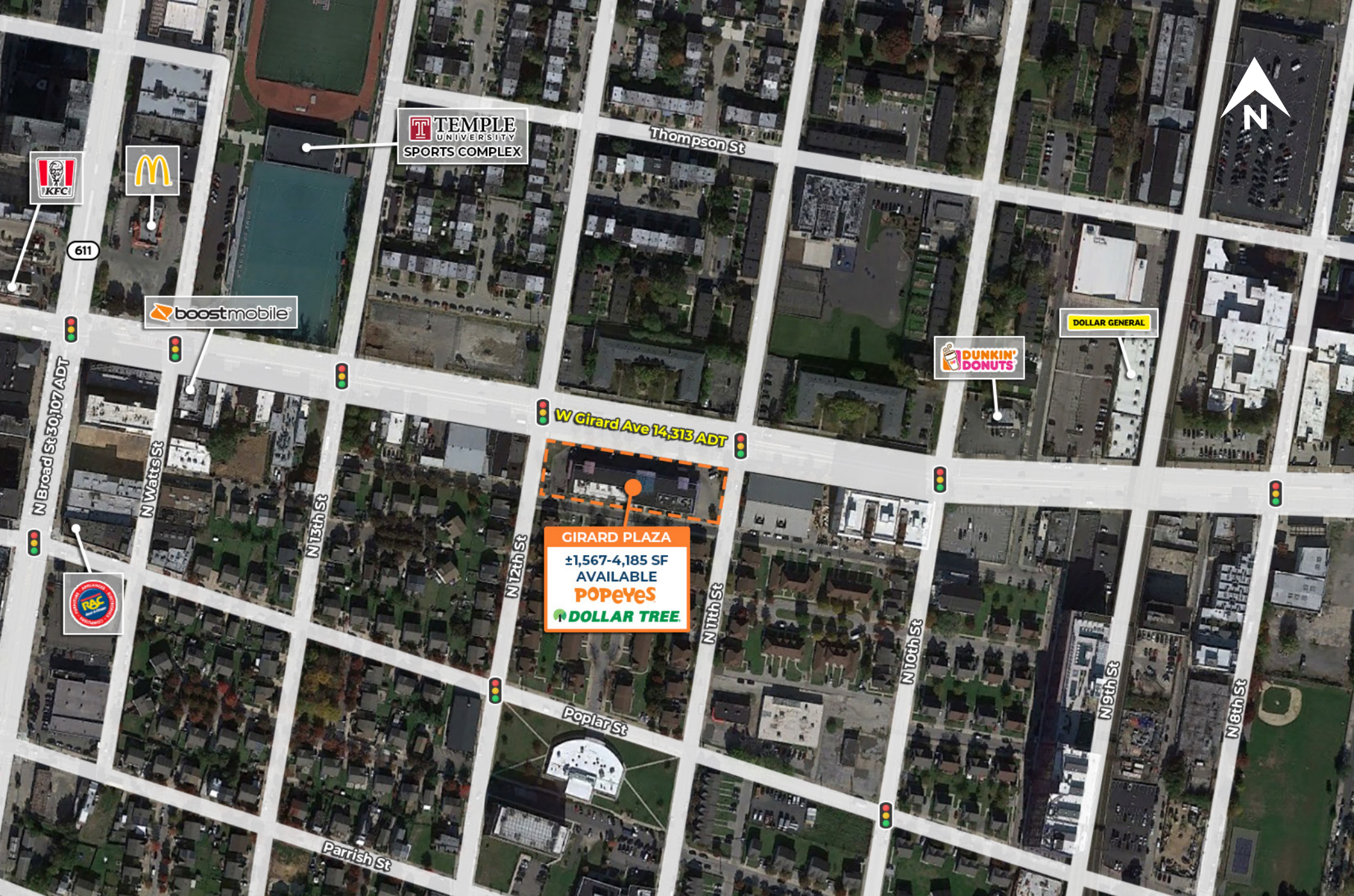


Corporate Office
224 St. Charles Way, Suite 290
York, PA 17402

Conshohocken Office
100 Front Street, Suite 560
West Conshohocken, PA 19428

Site Plan

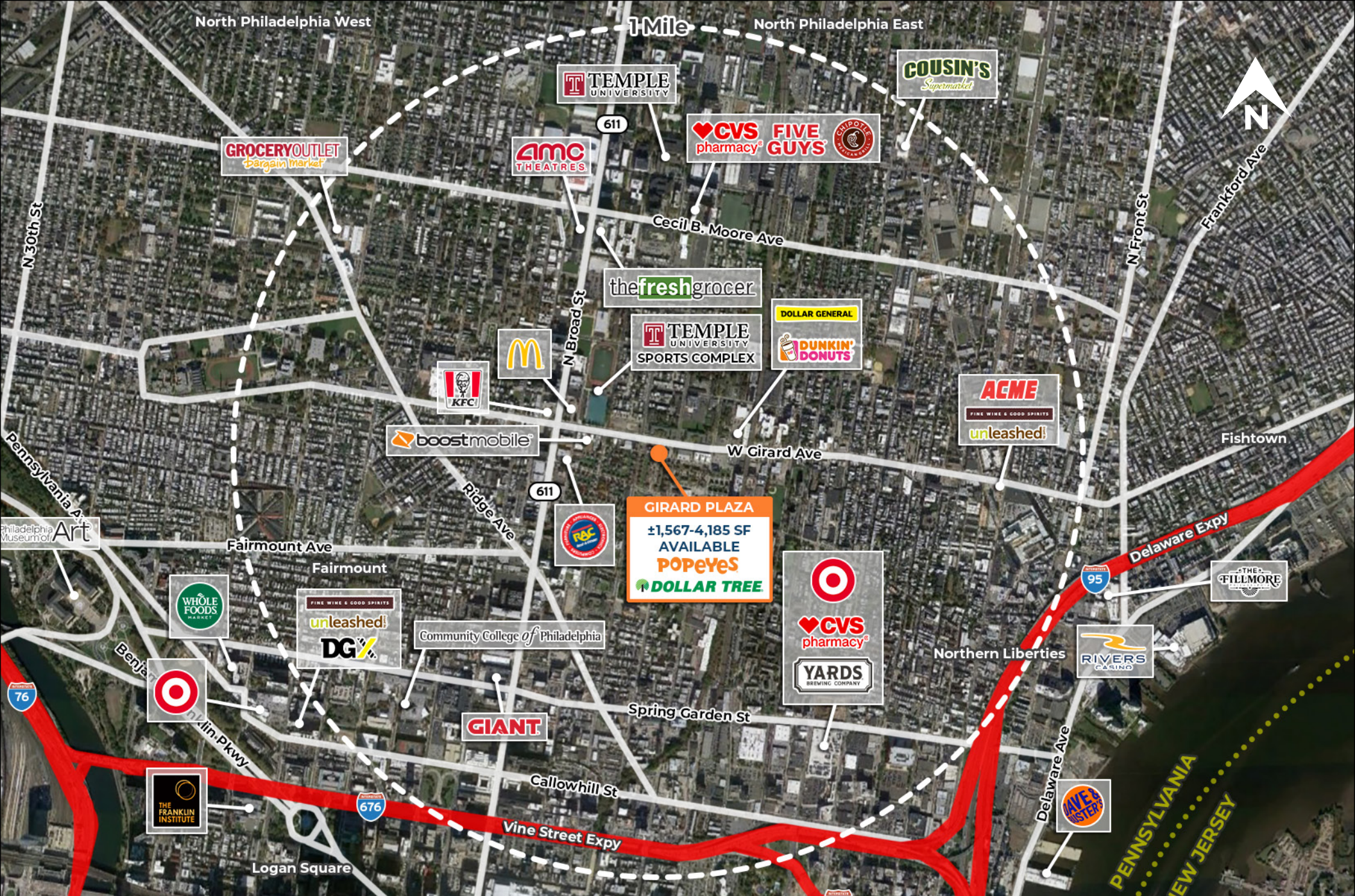
The information and images contained herein are from sources deemed reliable. However, J.C.BAR Properties, Inc. makes no representation whatsoever as to their accuracy or authenticity. Images shown may be modified for illustrative purposes. Images may be out-of-date and not current.



Corporate Office
224 St. Charles Way, Suite 290
York, PA 17402

Conshohocken Office
100 Front Street, Suite 560
West Conshohocken, PA 19428

Local Aerial



Corporate Office
224 St. Charles Way, Suite 290
York, PA 17402

Conshohocken Office
100 Front Street, Suite 560
West Conshohocken, PA 19428

Market Aerial