

Fruitland Plaza

206 N Fruitland Boulevard - Fruitland, MD 21826

±9,812 SF & ±1.00-2.00 Acre Pad Sites Available!



Corporate Office
224 St. Charles Way, Suite 290
York, PA 17402
Conshohocken Office
100 Front Street, Suite 560
West Conshohocken, PA 19428

Questions? Contact Us.



Melissa Lippe
MLippe@jcbarprop.com
p. 610-206-3319
c. 215-264-6964

Rob Gothier, III
rg3@jcbarprop.com
p. 717-296-1800
c. 717-712-4601

Fruitland Plaza

206 N Fruitland Boulevard - Fruitland, MD 21826

±9,812 SF & ±1.00-2.00 Acres Pad Sites Available!

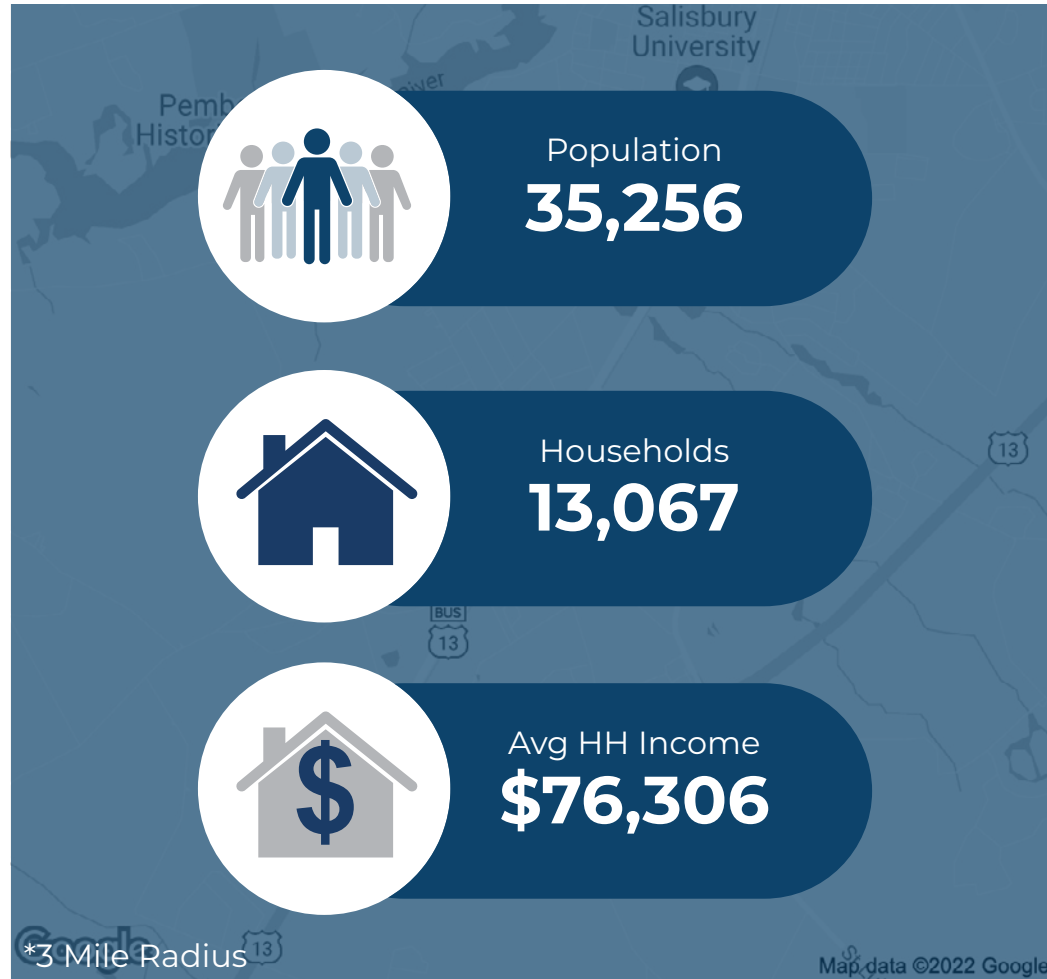
Highlights

- Food Lion anchored center with great co-tenancy like Aaron's, Off Street Sports, and Lucia's Fine Furniture with only one space remaining of ±9,812 square feet
- ±1.00 AC and ±2.00 AC Pad Sites available perfectly suited for storage, fast food, financial institution or medical
- Located on on N Fruitland Boulevard with 18,861 AADT
- ±2.00 AC Available for future development
- GLA ±93,575 SF

Join These and Local Area Retailers



Demographic	1 Mile	3 Miles	5 Miles
Population	5,868	35,256	67,186
Households	2,275	13,067	25,632
Avg HH Income	\$74,670	\$76,306	\$76,593
Daytime Employees	1,489	13,939	24,288



Questions? Contact Us.



Corporate Office
224 St. Charles Way, Suite 290
York, PA 17402

Conshohocken Office
100 Front Street, Suite 560
West Conshohocken, PA 19428

Melissa Lippe
MLippe@jcbarprop.com
p. 610-206-3319
c. 215-264-6964

Rob Gothier, III
rg3@jcbarprop.com
p. 717-296-1800
c. 717-712-4601

Fruitland Plaza

206 N Fruitland Boulevard - Fruitland, MD 21826

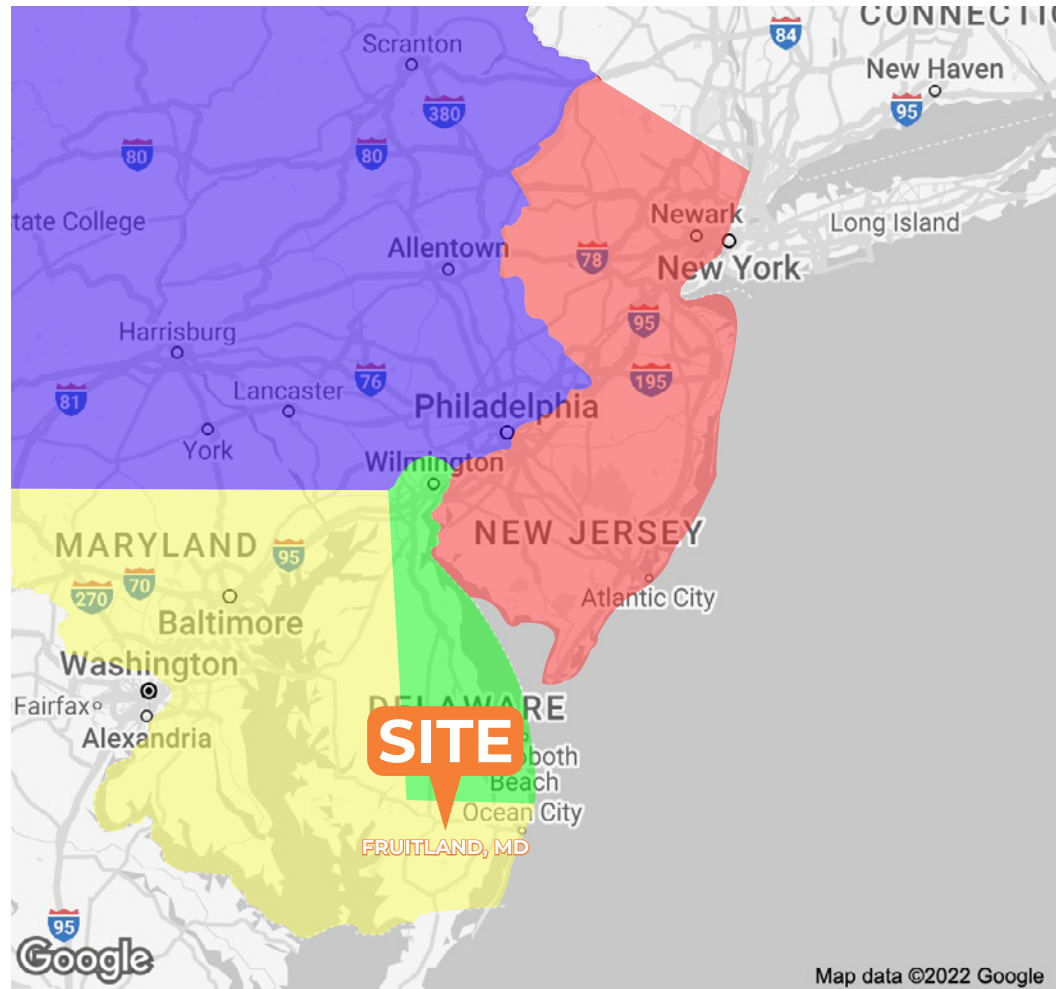
±9,812 SF & ±1.00-2.00 Acres Pad Sites Available!

About Fruitland Plaza

Fruitland Plaza is anchored by the 39,000 SF Food Lion Located on the southwest corner of N Fruitland Boulevard (U.S. Route 13) with 18,861 AADT and Clyde Avenue in rapidly expanding Fruitland, MD, which is 1 mile South of Salisbury, MD.

Fruitland Plaza has a GLA of ±93,575 SF with only one space remaining at ±9,812 square feet. Additionally, there is a 1-acre pad site available, which fronts the major roadway of N Fruitland Boulevard, and a 2-acre pad site available which fronts Clyde Avenue.

The top employers for the area are Peninsula Regional Medical Center, Salisbury University, Perdue Farms, and Walmart.



Map data ©2022 Google

Questions? Contact Us.



Corporate Office
224 St. Charles Way, Suite 290
York, PA 17402

Conshohocken Office
100 Front Street, Suite 560
West Conshohocken, PA 19428

Melissa Lippe

MLippe@jcbarprop.com

p. 610-206-3319

c. 215-264-6964

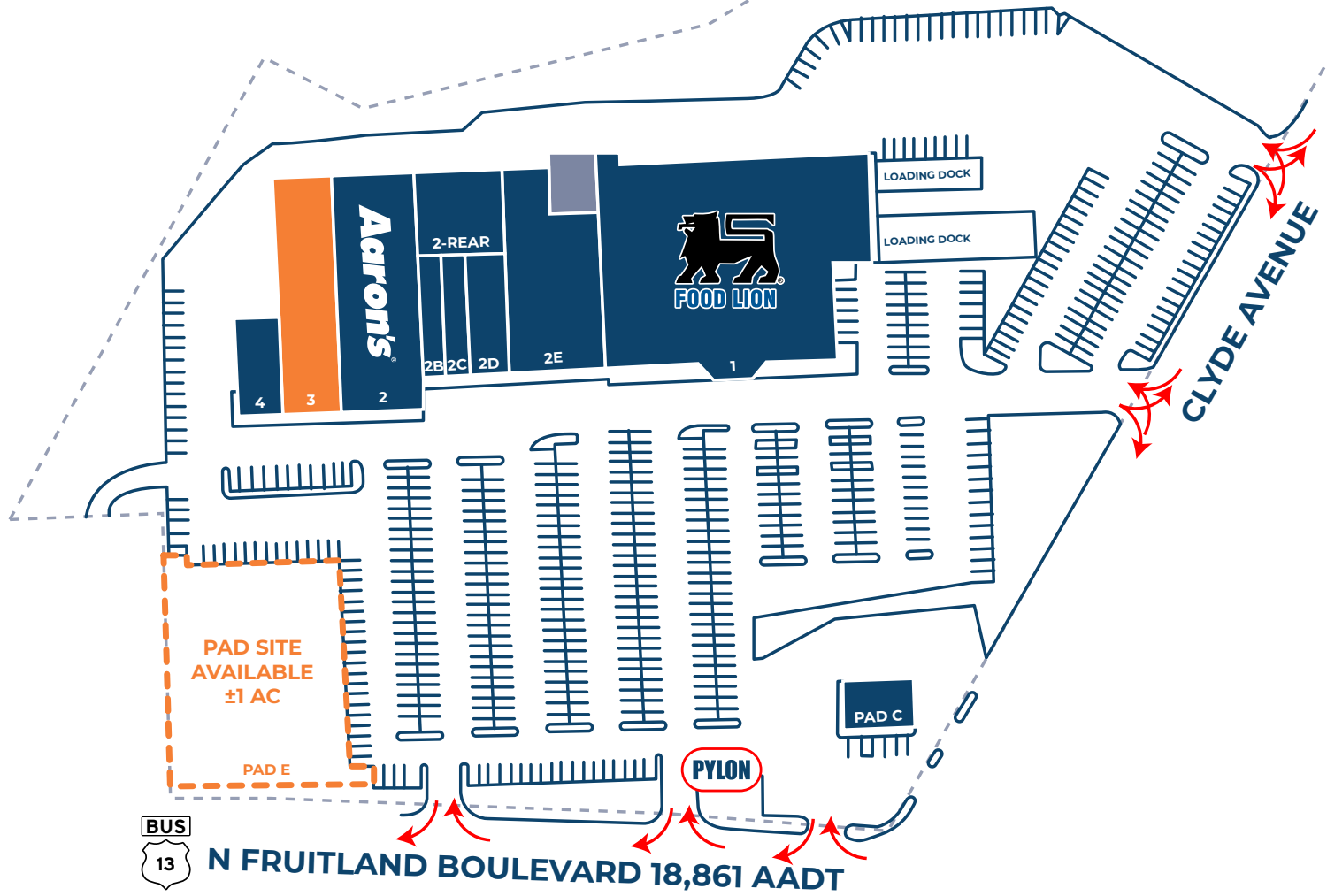
Fruitland Plaza

206 N Fruitland Boulevard, Fruitland, MD 21826



Unit	Tenant	Square Footage
1	Food Lion	±39,451 SF
2	Aaron's	±8,872 SF
2-Rear	Off Street Sports	±12,000 SF
2B	Just Nails and Spa	±2,000 SF
2C	Ridgeview Vape and Smoke Shop	±2,075 SF
2D	Beauty World	±3,706 SF
2E	It's Fashion Metro	±9,983 SF
3	AVAILABLE	±9,812 SF
4	Lucia's Fine Furniture	±3,194 SF
PAD C	Lucky Star Restaurant	±2,500 SF
PAD E	AVAILABLE	±1 AC
LAND	AVAILABLE	±1-2 AC

For land development see next page



N FRUITLAND BOULEVARD 18,861 AADT



Corporate Office
224 St. Charles Way, Suite 290
York, PA 17402

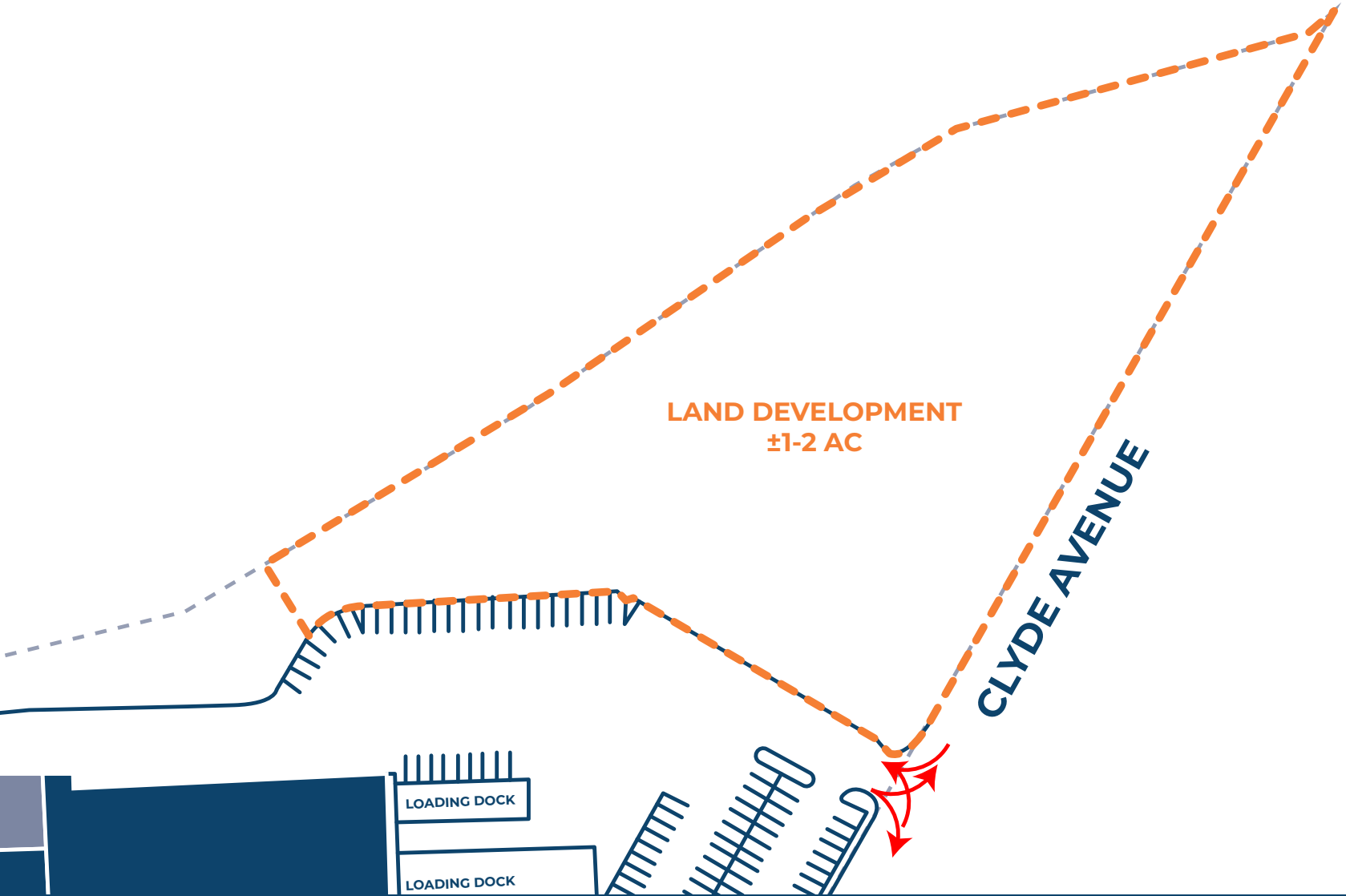
Conshohocken Office
100 Front Street, Suite 560
West Conshohocken, PA 19428

Site Plan

The information and images contained herein are from sources deemed reliable. However, J.C.BAR Properties, Inc. makes no representation whatsoever as to their accuracy or authenticity. Images shown may be modified for illustrative purposes. Images may be out-of-date and not current.

Fruitland Plaza - Land Development

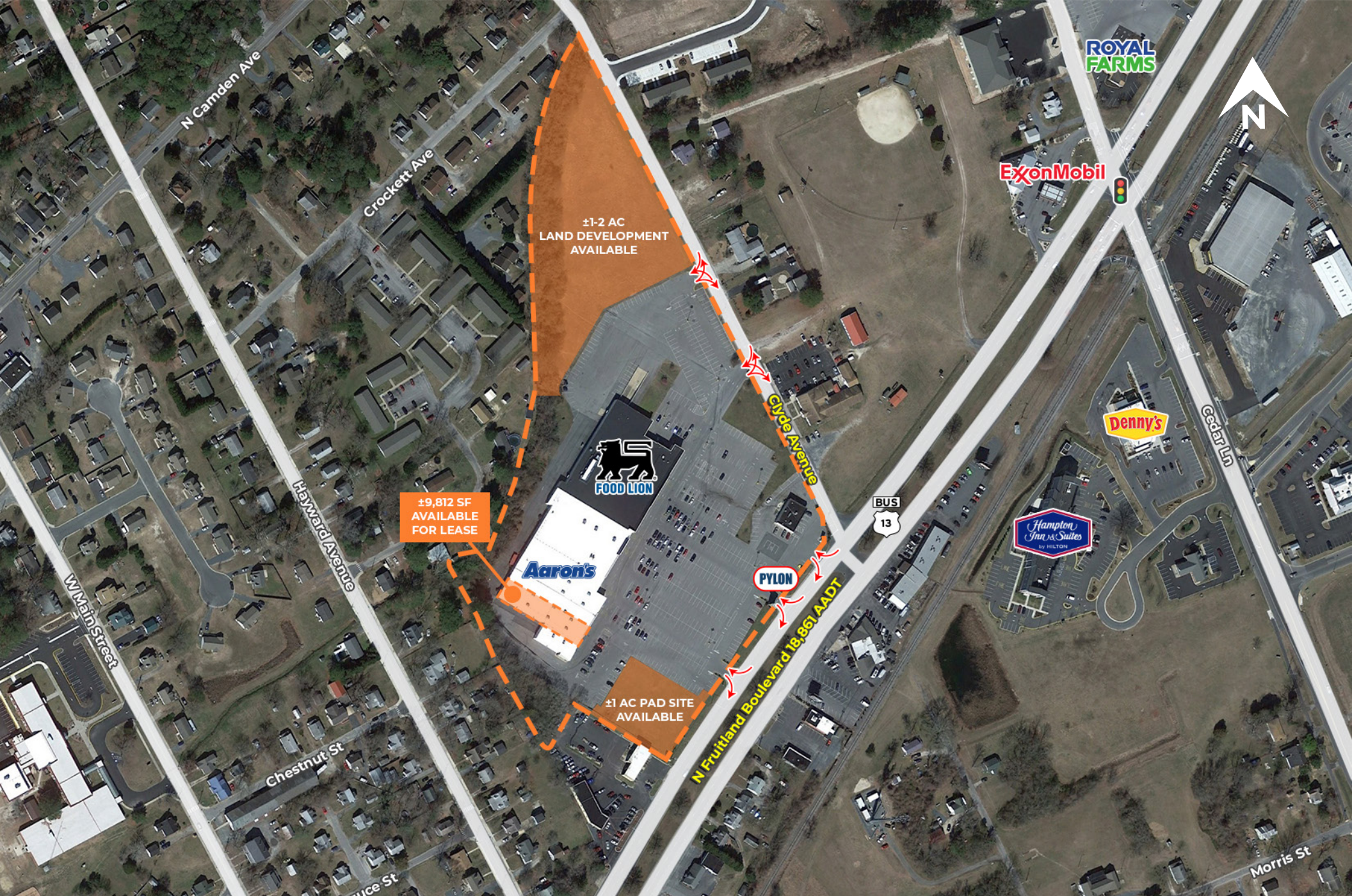
206 N Fruitland Boulevard, Fruitland, MD 21826



Corporate Office
224 St. Charles Way, Suite 290
York, PA 17402
Conshohocken Office
100 Front Street, Suite 560
West Conshohocken, PA 19428

Site Plan

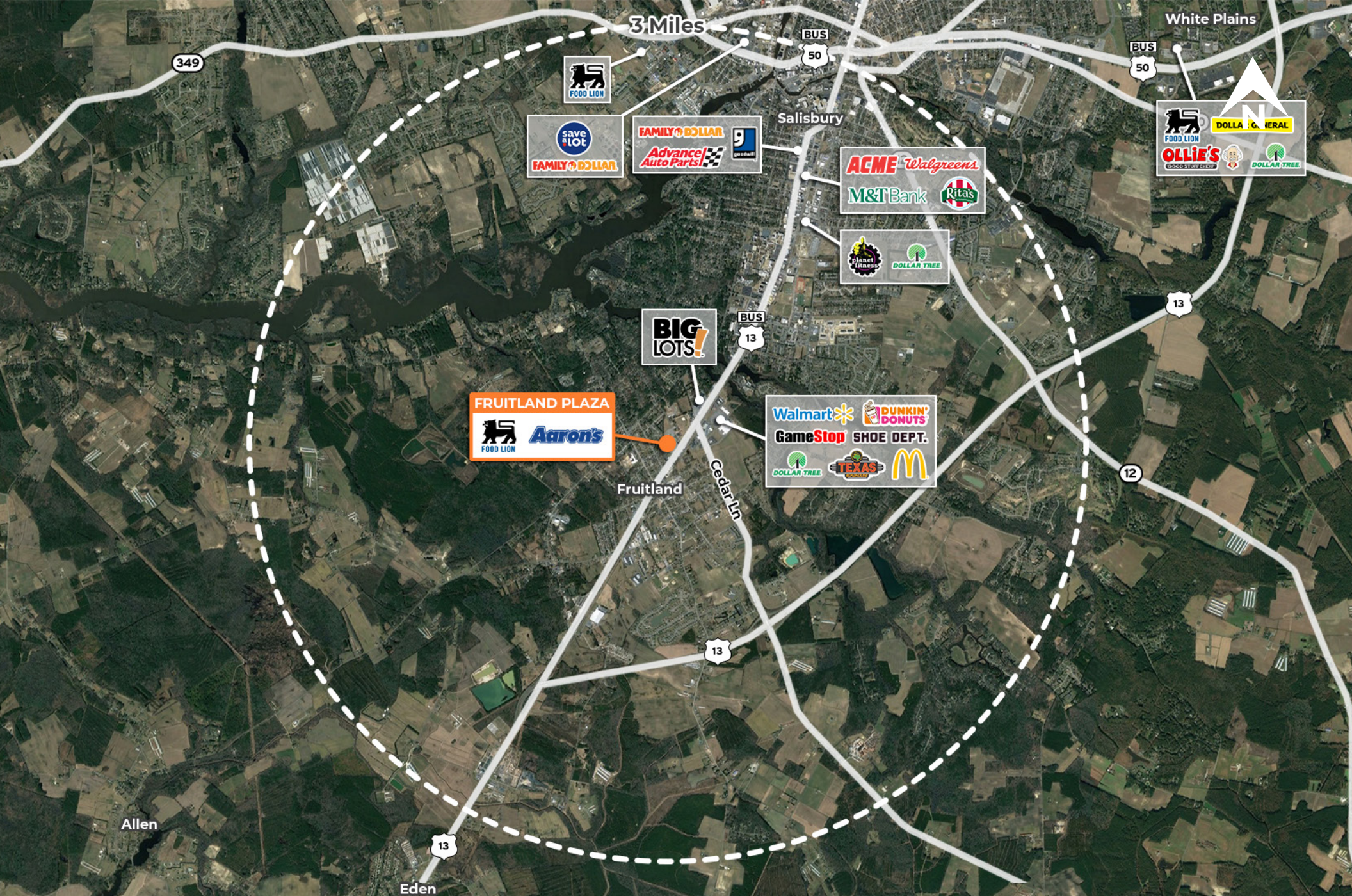
The information and images contained herein are from sources deemed reliable. However, J.C.BAR Properties, Inc. makes no representation whatsoever as to their accuracy or authenticity. Images shown may be modified for illustrative purposes. Images may be out-of-date and not current.



Corporate Office
224 St. Charles Way, Suite 290
York, PA 17402

Conshohocken Office
100 Front Street, Suite 560
West Conshohocken, PA 19428

Local Aerial



Corporate Office
 224 St. Charles Way, Suite 290
 York, PA 17402

Conshohocken Office
 100 Front Street, Suite 560
 West Conshohocken, PA 19428

Market Aerial

The information and images contained herein are from sources deemed reliable. However, J.C.BAR Properties, Inc. makes no representation whatsoever as to their accuracy or authenticity. Images shown may be modified for illustrative purposes. Images may be out-of-date and not current.