

Fruitland Plaza

206 N Fruitland Boulevard - Fruitland, MD 21826

Up To ±18,864 SF Available For Lease | Last Space Remaining!

CAN BE COMBINED!
±18,684 SF



Questions? Contact Us.

Melissa Lippe
MLippe@jcbarprop.com
p. 717-761-7801
c. 215-264-6964

Rob Gothier, III
rg3@jcbarprop.com
p. 717-296-1800
c. 717-712-4601

Blair Rinnier
BRinnier@rinnier.com
p. 410-742-8151

Fruitland Plaza

206 N Fruitland Boulevard - Fruitland, MD 21826

Up To ±18,864 SF Available For Lease | Last Space Remaining!

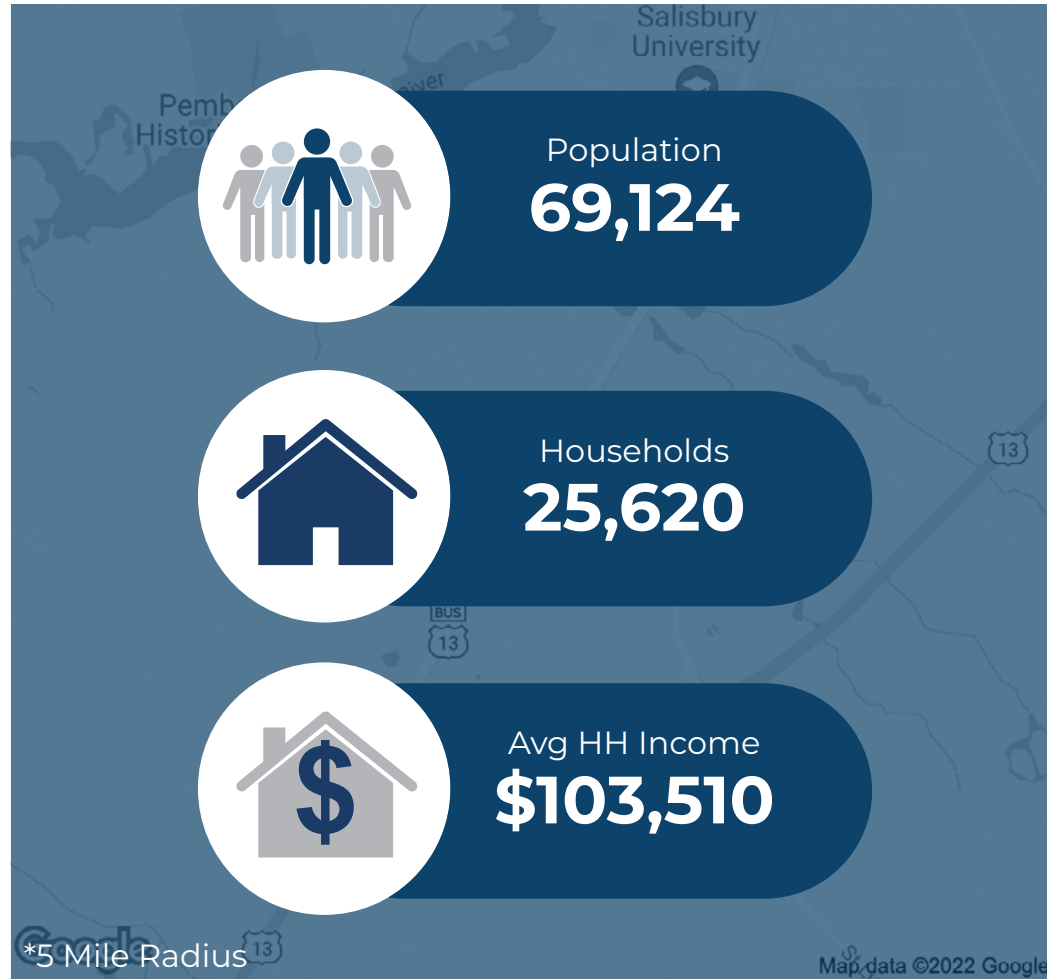
Highlights

- Food Lion anchored center with great co-tenancy like Aaron's, Off Street Sports, and Lucia's Fine Furniture
- ±1.00 AC and ±2.00 AC Pad Sites available perfectly suited for storage, fast food, financial institution or medical
- Located on on N Fruitland Boulevard with 18,861 AADT
- ±2.00 AC Available for future development
- GLA ±93,575 SF

Join These and Local Area Retailers



Demographic	1 Mile	3 Miles	5 Miles
Population	6,143	36,443	69,124
Households	2,345	13,138	25,620
Avg HH Income	\$115,723	\$98,814	\$103,510
Daytime Employees	1,648	14,156	23,896



Questions? Contact Us.



Melissa Lippe
 MLippe@jcbarprop.com
 p. 717-761-7801
 c. 215-264-6964

Rob Gothier, III
 rg3@jcbarprop.com
 p. 717-296-1800
 c. 717-712-4601

Blair Rinnier
 BRinnier@rinnier.com
 p. 410-742-8151

Fruitland Plaza

206 N Fruitland Boulevard - Fruitland, MD 21826

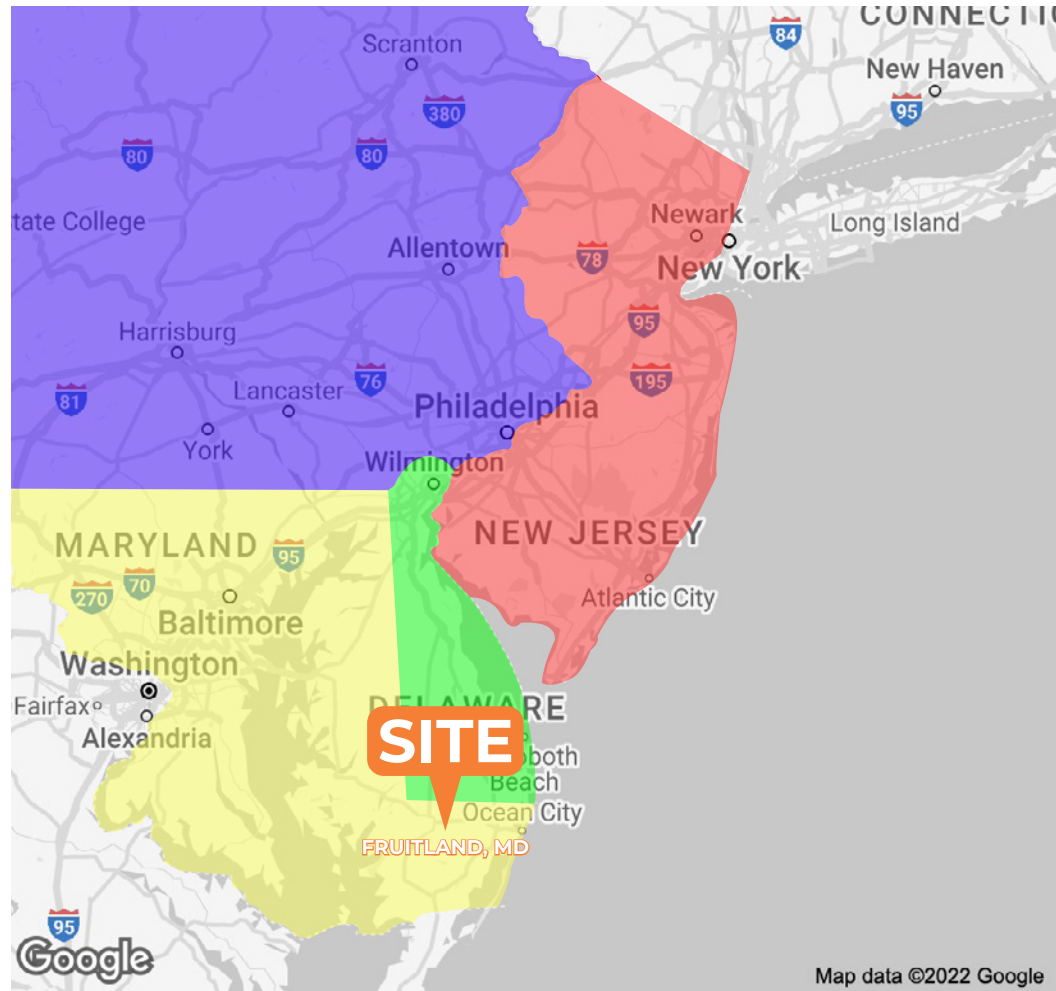
Up To ±18,864 SF Available For Lease | Last Space Remaining!

About Fruitland Plaza

Fruitland Plaza is anchored by the 39,000 SF Food Lion Located on the southwest corner of N Fruitland Boulevard (U.S. Route 13) with 18,861 AADT and Clyde Avenue in rapidly expanding Fruitland, MD, which is 1 mile South of Salisbury, MD.

Fruitland Plaza has a GLA of ±93,575 SF with only two spaces remaining at ±8,872 SF & ±9,812 square feet. Additionally, there is a 1-acre pad site available, which fronts the major roadway of N Fruitland Boulevard, and a 2-acre pad site available which fronts Clyde Avenue.

The top employers for the area are Peninsula Regional Medical Center, Salisbury University, Perdue Farms, and Walmart.



Map data ©2022 Google

Questions? Contact Us.



Melissa Lippe
MLippe@jcbarprop.com
p. 717-761-7801
c. 215-264-6964

Rob Gothier, III
rg3@jcbarprop.com
p. 717-296-1800
c. 717-712-4601

Blair Rinnier
BRinnier@rinnier.com
p. 410-742-8151

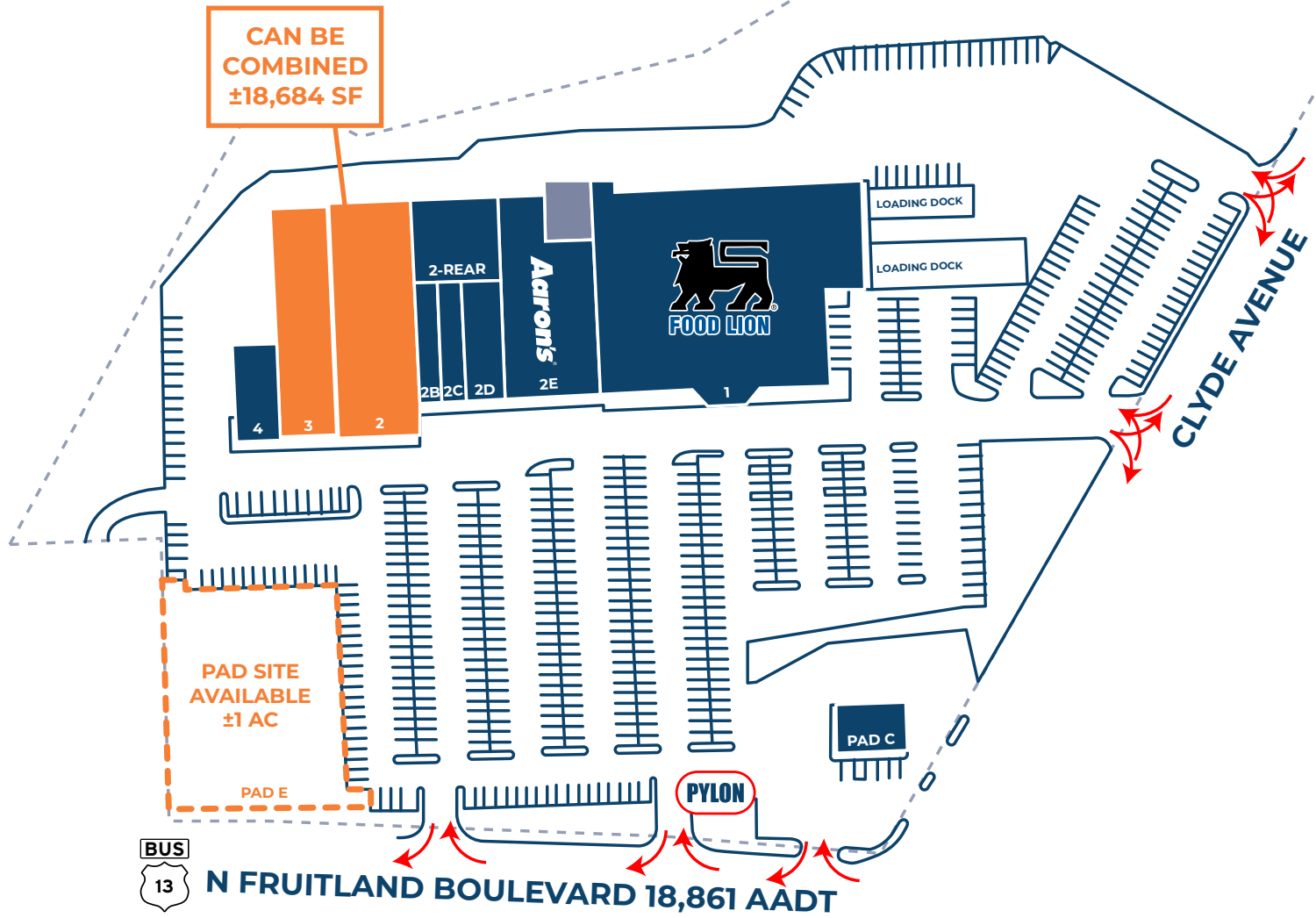
Fruitland Plaza

206 N Fruitland Boulevard, Fruitland, MD 21826



Unit	Tenant	Square Footage
1	Food Lion	±39,451 SF
2	AVAILABLE	±8,872 SF
2-Rear	Off Street Sports	±12,000 SF
2B	Just Nails and Spa	±2,000 SF
2C	Ridgeview Vape and Smoke Shop	±2,075 SF
2D	Beauty World	±3,706 SF
2E	Aaron's	±9,983 SF
3	AVAILABLE	±9,812 SF
4	Lucia's Fine Furniture	±3,194 SF
PAD C	Lucky Star Restaurant	±2,500 SF
PAD E	AVAILABLE	±1 AC
LAND	AVAILABLE	±1-2 AC

For land development
see next page

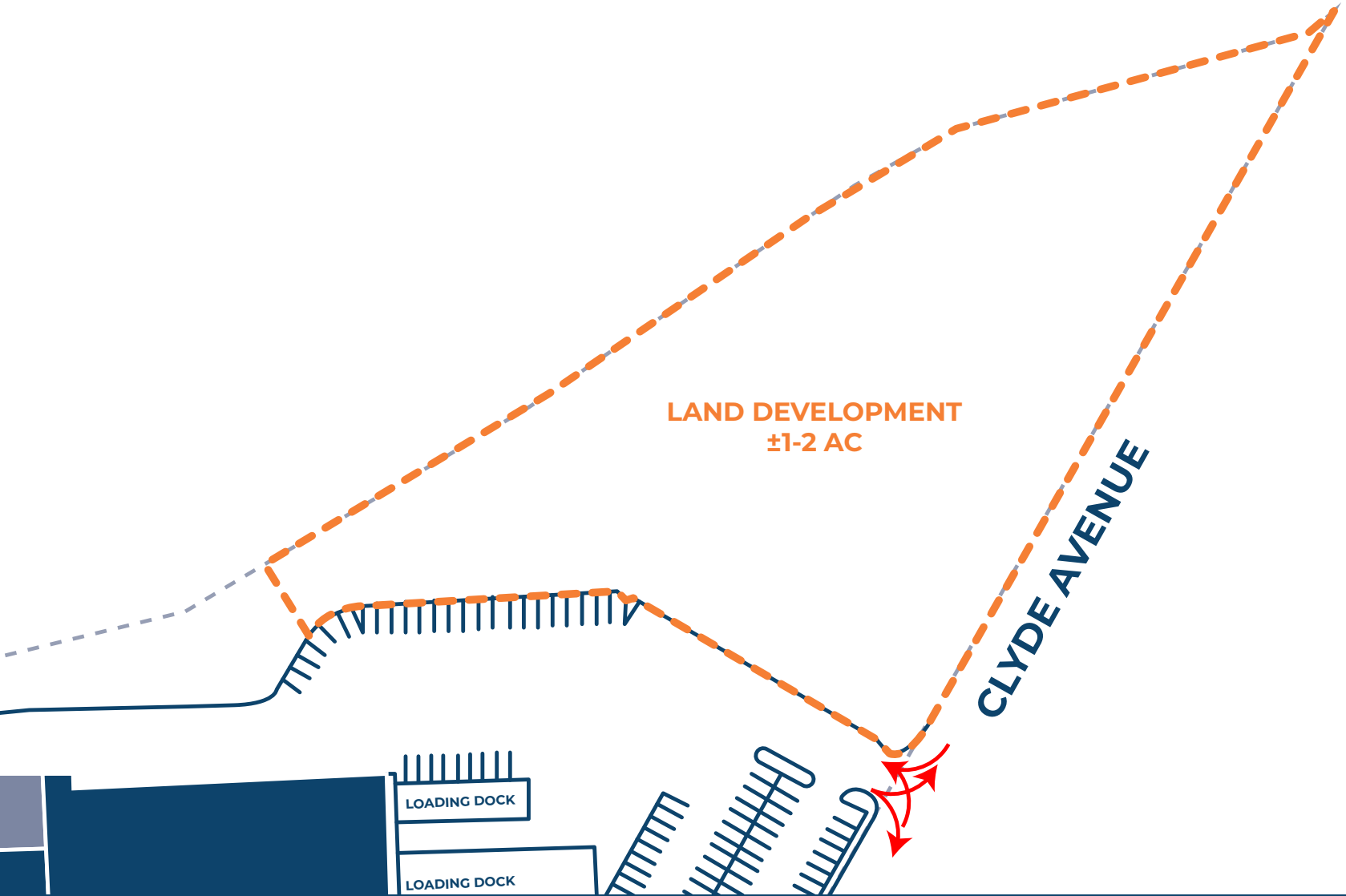


Site Plan

The information and images contained herein are from sources deemed reliable. However, J.C.BAR Properties, Inc. makes no representation whatsoever as to their accuracy or authenticity. Images shown may be modified for illustrative purposes. Images may be out-of-date and not current.

Fruitland Plaza - Land Development

206 N Fruitland Boulevard, Fruitland, MD 21826



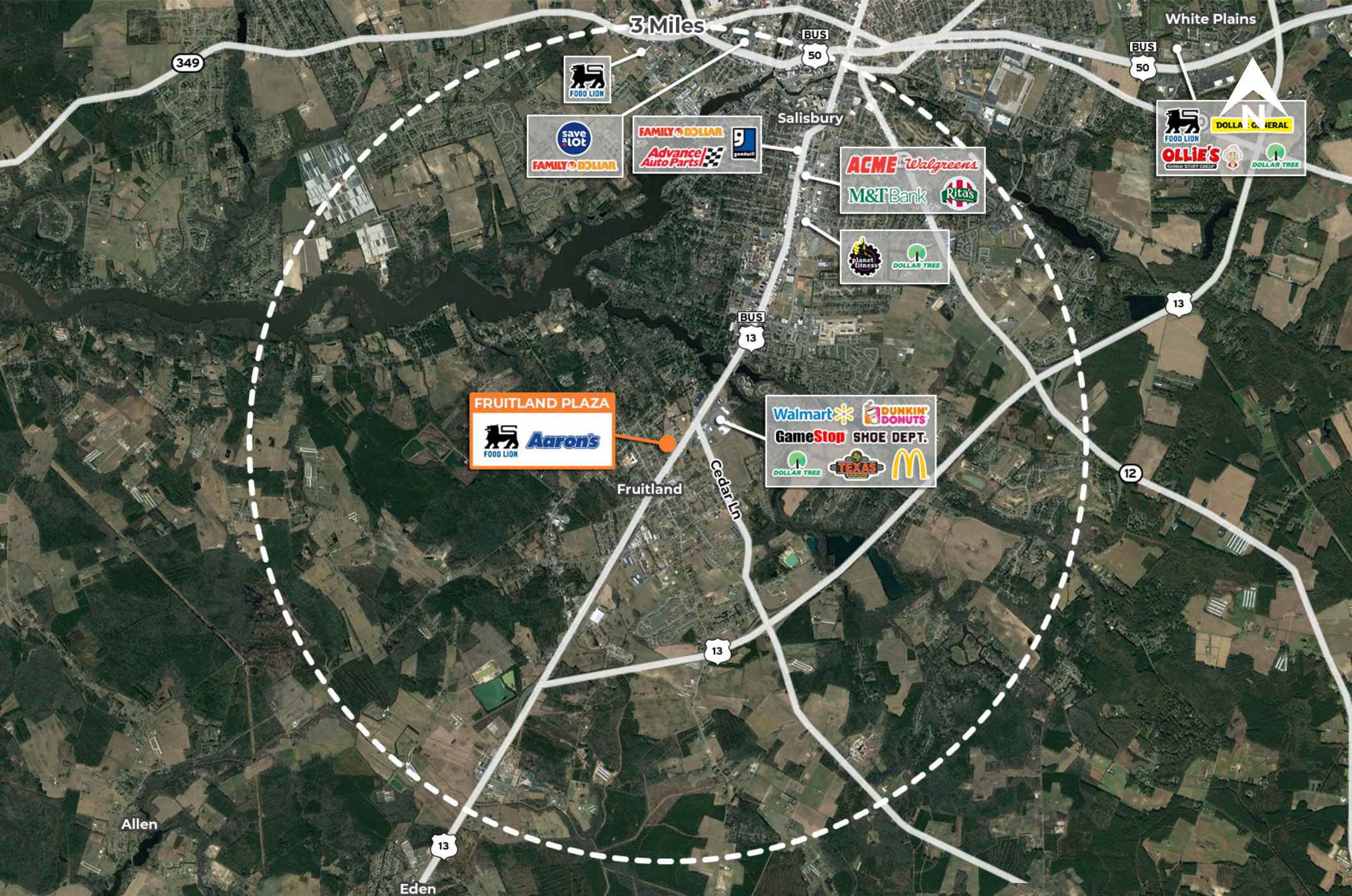
Site Plan

The information and images contained herein are from sources deemed reliable. However, J.C.BAR Properties, Inc. makes no representation whatsoever as to their accuracy or authenticity. Images shown may be modified for illustrative purposes. Images may be out-of-date and not current.



Local Aerial

The information and images contained herein are from sources deemed reliable. However, J.C.BAR Properties, Inc. makes no representation whatsoever as to their accuracy or authenticity. Images shown may be modified for illustrative purposes. Images may be out-of-date and not current.



Market Aerial

The information and images contained herein are from sources deemed reliable. However, J.C.BAR Properties, Inc. makes no representation whatsoever as to their accuracy or authenticity. Images shown may be modified for illustrative purposes. Images may be out-of-date and not current.