

# Fruitland Plaza

206 N Fruitland Blvd, Fruitland, MD 21826

9,812 SF & Pad Sites Available: 1.00 AC - 2.00 AC





# Fruitland Plaza

206 N Fruitland Blvd, Fruitland, MD 21826

## Highlights

- Join:  
- Last Space Remaining! 9,812 SF with great co-tenancy in the Fruitland Plaza
- 1 AC Pad Site with prime frontage on N Fruitland Boulevard with 18,861 VPD
- 2 AC Available for future development
- N Fruitland Blvd (US 13 Bus) Count: 18,861 VPD
- GLA 93,575 SF



Population

**36,060**



Households

**13,122**



Avg Household Income

**\$80,643**

Questions? Get in touch.



**Greg Jones**

📞 (610) 234-6491

📱 (484) 948-5217

✉️ [gjones@jcbarprop.com](mailto:gjones@jcbarprop.com)



**Melissa Lippe**

📞 (610) 206-3319

📱 (215) 264-6964

✉️ [mlippe@jcbarprop.com](mailto:mlippe@jcbarprop.com)



# Fruitland Plaza

206 N Fruitland Blvd, Fruitland, MD 21826

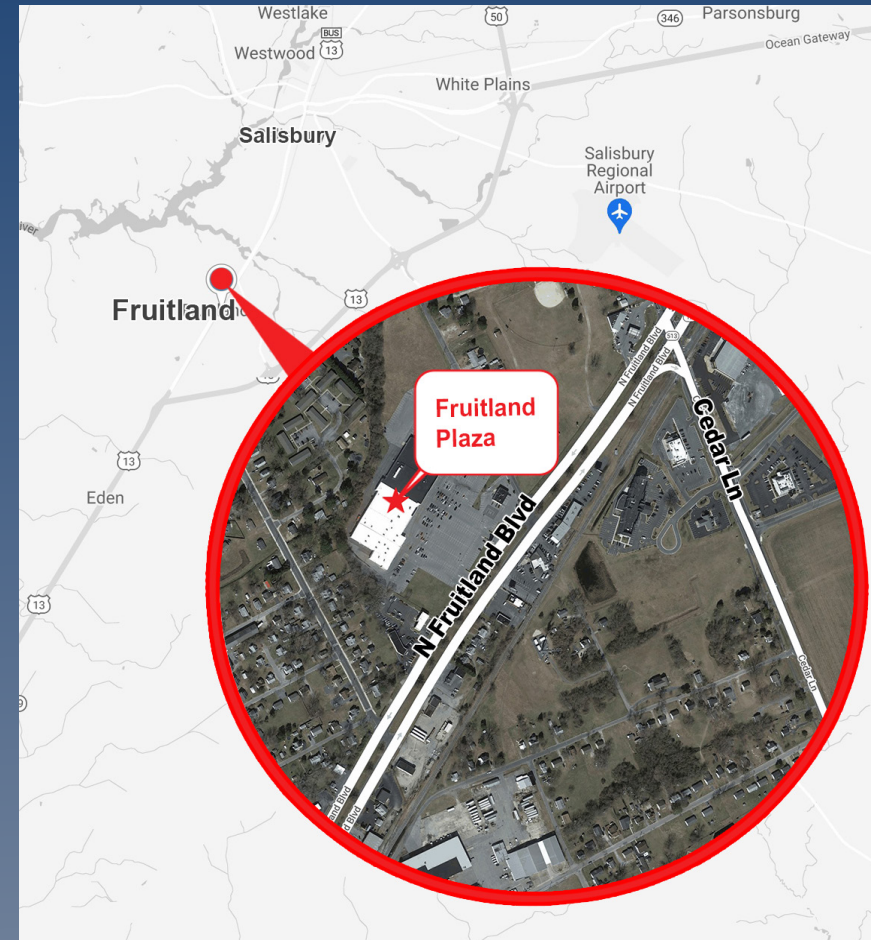
## About Fruitland Plaza

Fruitland Plaza is anchored by the 39,000 SF Food Lion. Located on the southwest corner of N Fruitland Boulevard (U.S. Route 13) with 18,861 VPD and Clyde Avenue in rapidly expanding Fruitland, MD, which is 1 mile South of Salisbury, MD.

Fruitland Plaza has a GLA of 93,575 SF. There is only one space remaining which consists of 9,812 square feet. Additionally, there is a 1-acre pad site available, which fronts the major roadway of N Fruitland Boulevard. There is a secondary 2-acre pad site available which fronts Clyde Avenue.

The Shopping Center was acquired by Triple BAR Group in 2021 and is managed by J.C. BAR Properties.

Demographic	1 Mile	3 Miles	5 Miles
Population	5,367	36,060	67,581
Households	2,088	13,122	25,311
Avg Household Income	\$79,517	\$80,643	\$81,122
Daytime Employees	1,550	16,133	27,070
Traffic Count	N Fruitland Blvd (US 13 Bus): 18,861 VPD		



## Questions? Get in touch.



**Greg Jones**

📞 (610) 234-6491

📱 (484) 948-5217

✉️ [gjones@jcbarprop.com](mailto:gjones@jcbarprop.com)



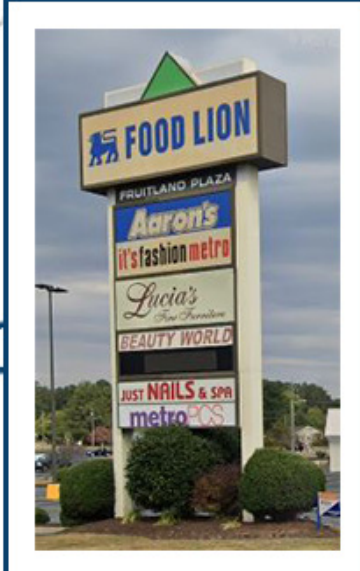
**Melissa Lippe**

📞 (610) 206-3319

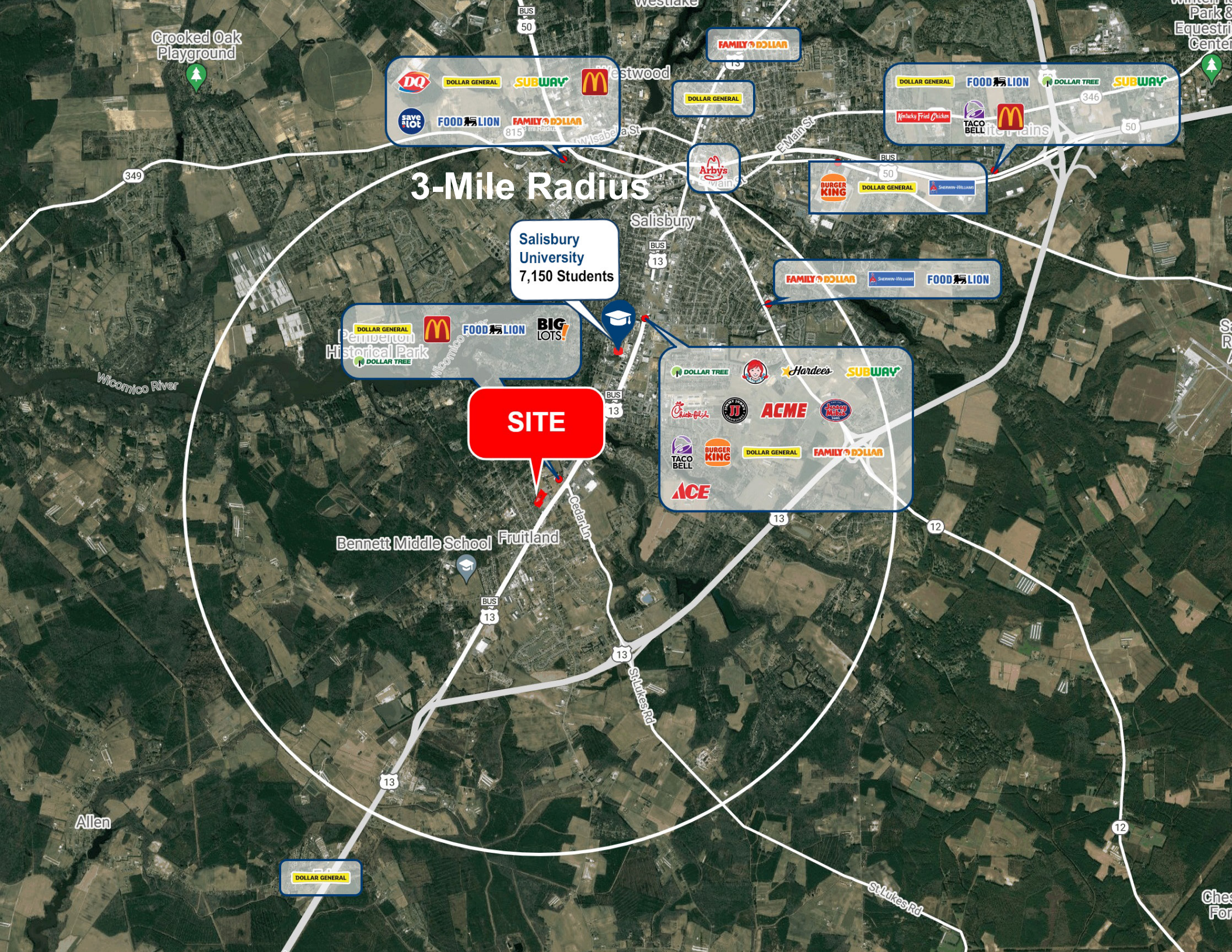
📱 (215) 264-6964

✉️ [mlippe@jcbarprop.com](mailto:mlippe@jcbarprop.com)

1	Food Lion	39,451	SF
2	Its Fashion Metro	9,983	SF
3	Beauty World	3,706	SF
4	AT LEASE	2,057	SF
5	Just Nails & Spa	2,000	SF
6	Off Street Sports Performance	12,000	SF
7	Aaron's	8,872	SF
8	AVAILABLE	9,812	SF
9	Lucia's Fine Furniture	3,194	SF
10	AVAILABLE - PAD SITE	1	AC
11	Lucky Star	2,500	SF
12	AVAILABLE - FOR DEVELOPMENT	1-2	AC







# 3-Mile Radius

Salisbury University  
7,150 Students

**SITE**

Callout 1 (West of Site):

- DOLLAR GENERAL
- McDonald's
- FOOD LION
- BIG LOTS!
- DOLLAR TREE

Callout 2 (East of Site):

- DOLLAR TREE
- Hardee's
- SUBWAY
- Chick-fil-A
- JJ
- ACME
- Family Dollar
- TACO BELL
- BURGER KING
- DOLLAR GENERAL
- FAMILY DOLLAR
- ACE

Callout 3 (Northwest of Site):

- McDonald's
- DOLLAR GENERAL
- SUBWAY
- McDonald's
- save a lot
- FOOD LION
- FAMILY DOLLAR

Callout 4 (Northeast of Site):

- DOLLAR GENERAL
- FOOD LION
- DOLLAR TREE
- SUBWAY
- Kentucky Fried Chicken
- TACO BELL
- McDonald's

Callout 5 (East of Site):

- BURGER KING
- DOLLAR GENERAL
- Subway-Williams

Callout 6 (East of Site):

- FAMILY DOLLAR
- Subway-Williams
- FOOD LION

Callout 7 (Southwest of Site):

- DOLLAR GENERAL

Crooked Oak Playground

Bennett Middle School Fruitland

Allen

Chesterford



**RETAIL SPACE  
AVAILABLE  
9,812 SF**

**Aaron's**

**it'sfashionmetro**



**LUCKY STAR**  
CHINESE RESTAURANT

**N Fruitland Blvd: 18,861 VPD**