

# Former Iron Hill Brewery

2120 Voorhees Town Center, Voorhees, NJ 08043

±9,391 SF 2nd Gen Restaurant Space Available For Lease



**±9,391 SF AVAILABLE**  
***LIQUOR LICENSE INCLUDED***

**Questions? Contact Us.**

**Greg Jones**

GJones@jcbarprop.com  
p. 610-234-6491  
c. 484-948-5217

**Brett Davidoff**

BDavidoff@jcbarprop.com  
p. 610-234-6491  
c. 609-320-1145

**Colin Hodgson**

CHodgson@jcbarprop.com  
p. 610-234-6491  
c. 302-588-8179

# Former Iron Hill Brewery

2120 Voorhees Town Center, Voorhees, NJ 08043

±9,391 SF 2nd Gen Restaurant Space Available For Lease

**LIQUOR LICENSE  
INCLUDED**

## Highlights

- ±9,391 AADT 2nd Gen Restaurant Space Available on an End Cap
- The Center has Transformed from a Traditional Mall into a Mixed-use Development with Retail, Dining, Residential Apartments, Office Space, and Municipal Services
- Home to Foster Square with 350 Residential Apartments Generating Non-stop Traffic for the Center

## JOIN



Demographic	1 Mile	3 Miles	5 Miles
Population	14,841	94,690	256,179
Households	6,779	38,596	102,812
Avg HH Income	\$100,020	\$127,715	\$137,013
Daytime Employees	4,876	32,914	107,463



## Major Employers

- Cooper Health System
- Virtua Health System
- Campbell Soup Company
- Our Lady of Lourdes Hospital
- American Water
- TD Bank
- Jefferson Health
- Aluminum Shapes
- Lockheed Martin
- State of New Jersey
- US Postal Service
- Camden County Government
- Rutgers-Camden
- Cherry Hill BOE
- City of Camden
- Diocese of Camden
- L3 Technologies
- Walmart
- Target
- Shoprite
- Acme
- Camden County College
- Simon Properties
- Scrub Daddy
- Pepridge Farms
- Catelli Bros
- Snyder's Lance, Inc

## Questions? Contact Us.

**Greg Jones**

GJones@jcbarprop.com  
p. 610-234-6491  
c. 484-948-5217

**Brett Davidoff**

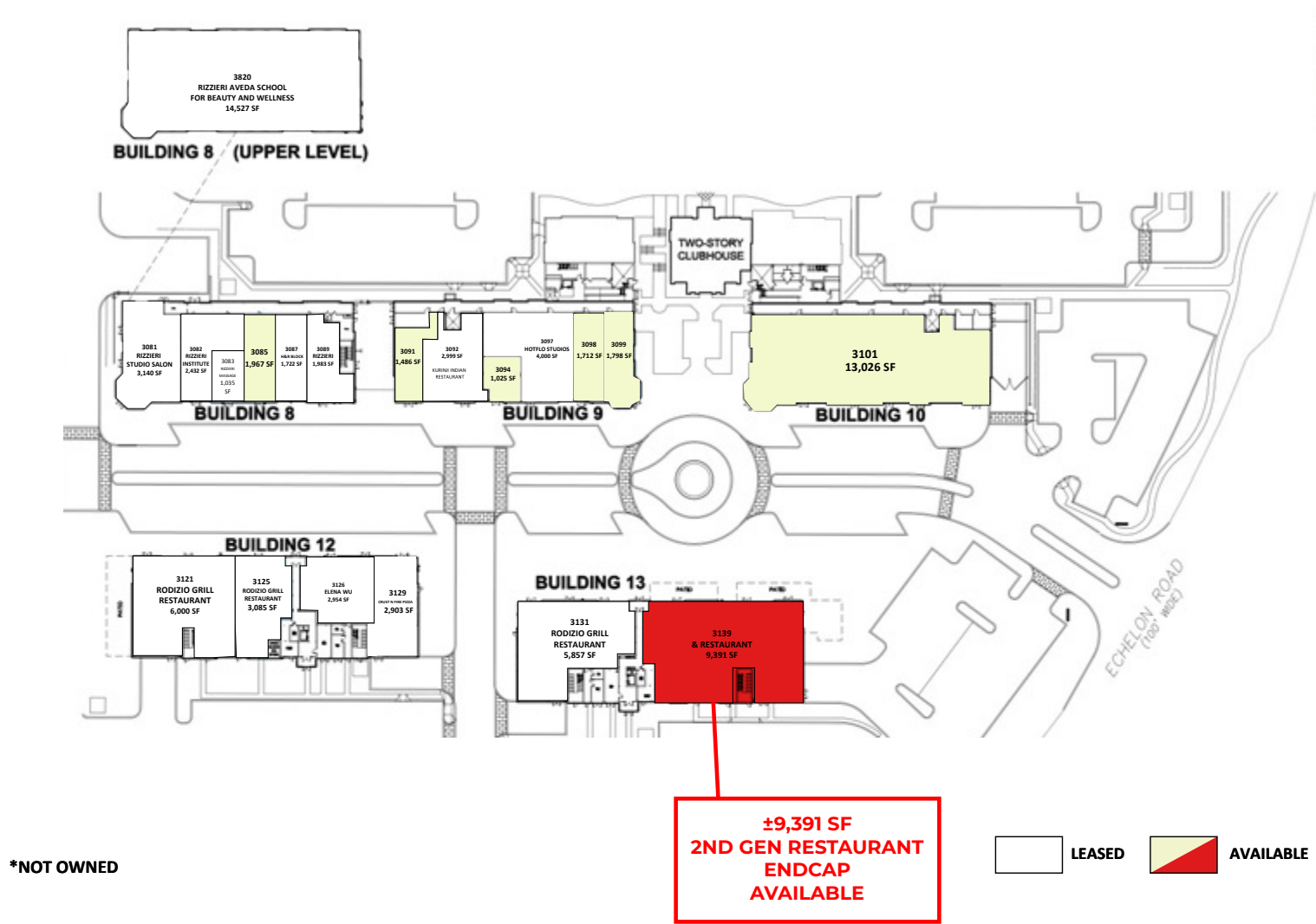
BDavidoff@jcbarprop.com  
p. 610-234-6491  
c. 609-320-1145

**Colin Hodgson**

CHodgson@jcbarprop.com  
p. 610-234-6491  
c. 302-588-8179

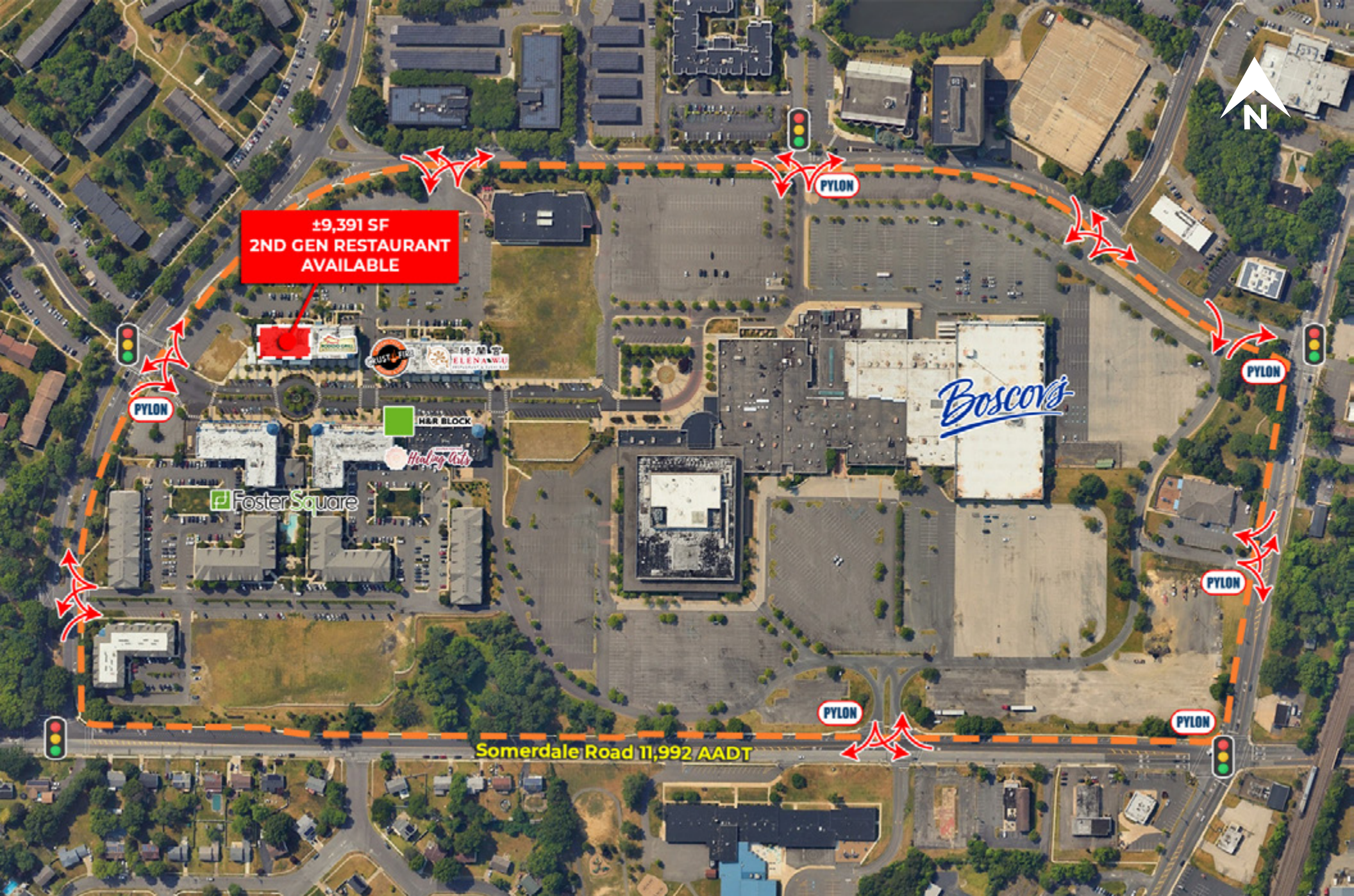


# Site Plan



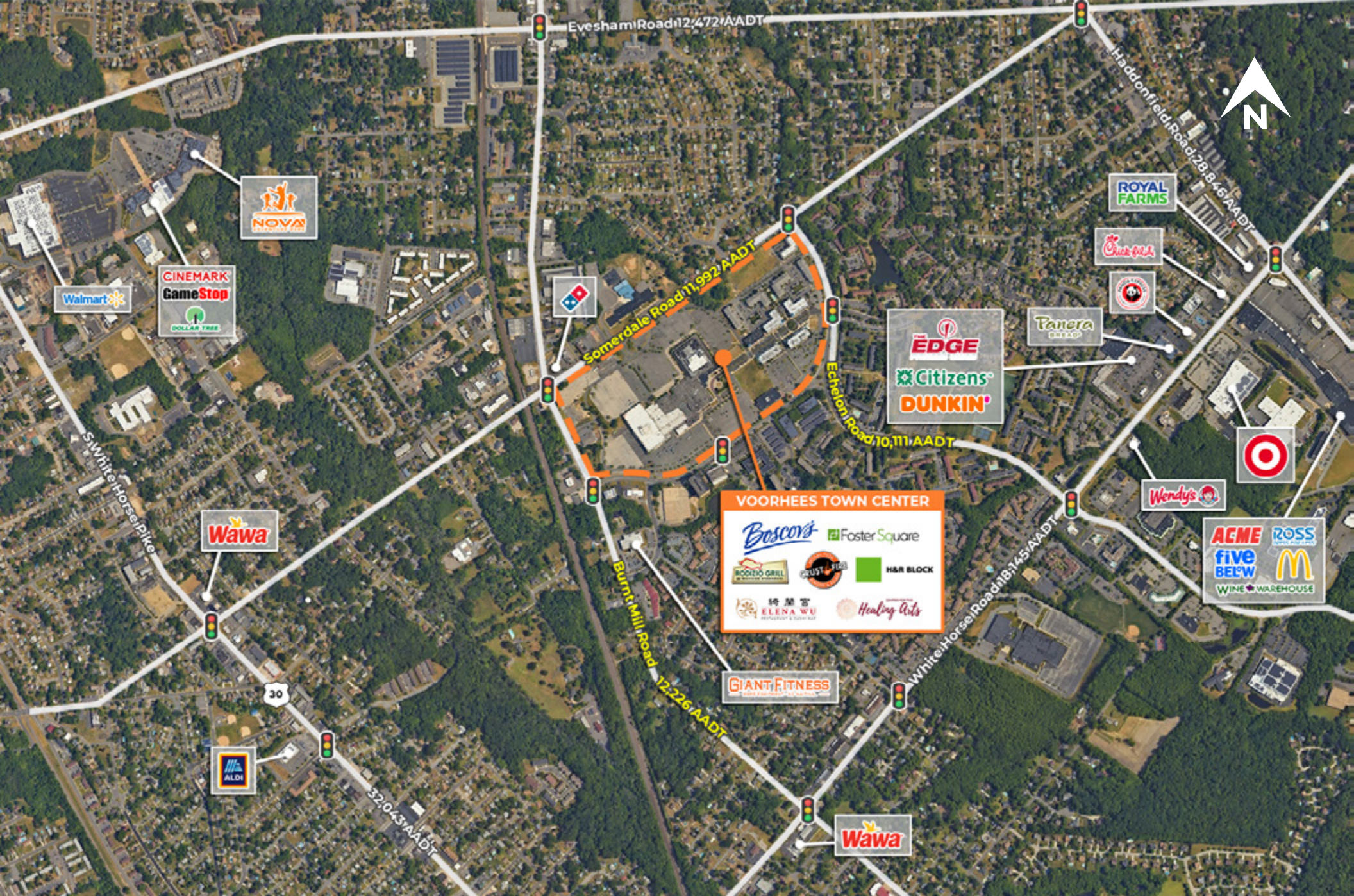
# Site Plan





# Zoom Aerial





# Local Aerial





# Market Aerial