

Former Bank Building For Sale

824 Lansdowne Avenue, Drexel Hill, PA 19026

±2,931 SF on ±0.32 AC For Sale



Corporate Office
224 St. Charles Way, Suite 290
York, PA 17402
Conshohocken Office
100 Front Street, Suite 560
West Conshohocken, PA 19428

Questions? Contact Us.



Greg Jones
GJones@jcbarprop.com
p. 610-234-6491
c. 484-948-5217

Former Bank Building For Sale

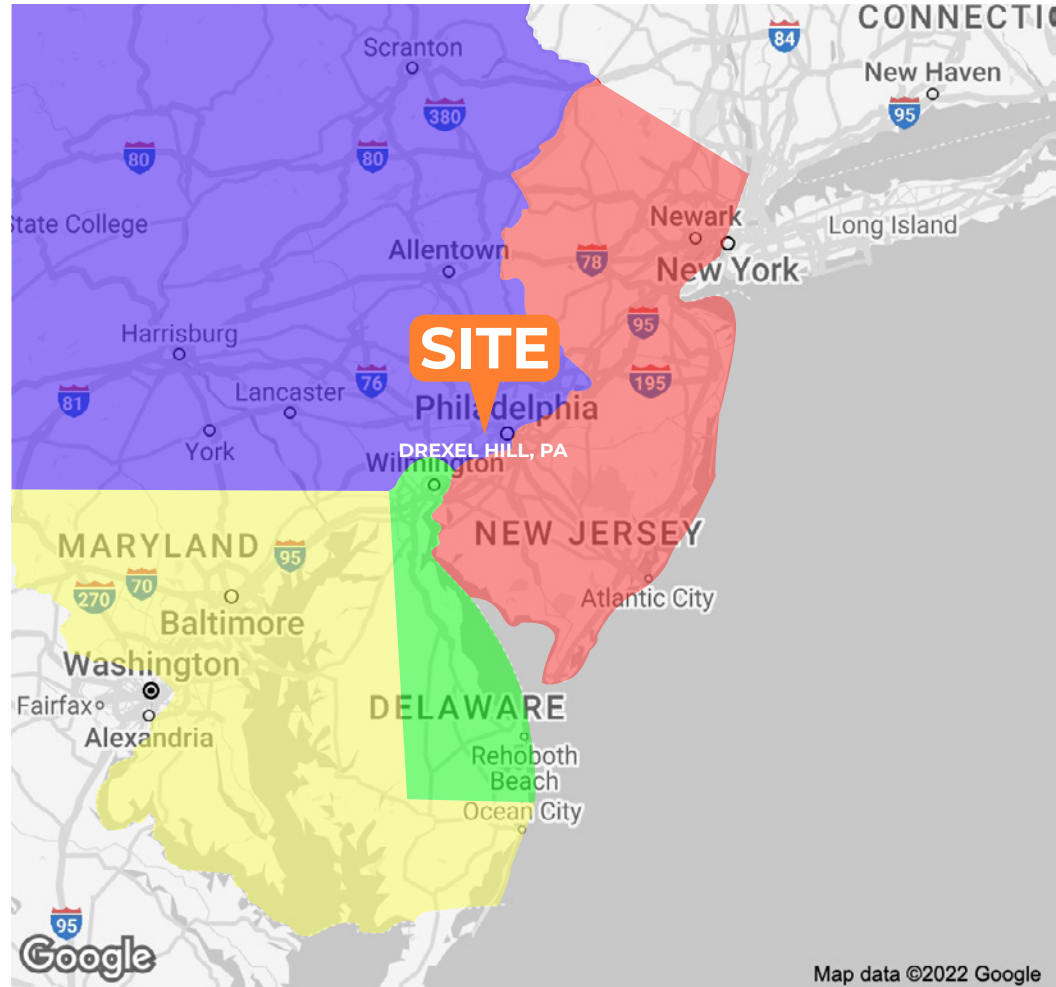
824 Lansdowne Avenue, Drexel Hill, PA 19026

±2,931 SF on ±0.32 AC For Sale

Highlights

- Rare free-standing building with drive thru available in the heart of Drexel Hill (Delaware County)
- Accessible from Lansdowne Avenue and State Road
- Across the street from the Bond Shopping Center with Acme, Dollar Tree, Petco
- Pylon sign available on Lansdowne Avenue
- Zoning: C2

Demographic	1 Mile	3 Miles	5 Miles
Population	26,503	258,511	603,942
Households	10,022	99,397	233,983
Avg HH Income	\$100,443	\$88,882	\$87,162
Daytime Employees	9,517	72,329	201,052



Questions? Contact Us.



Corporate Office
224 St. Charles Way, Suite 290
York, PA 17402

Conshohocken Office
100 Front Street, Suite 560
West Conshohocken, PA 19428

Greg Jones

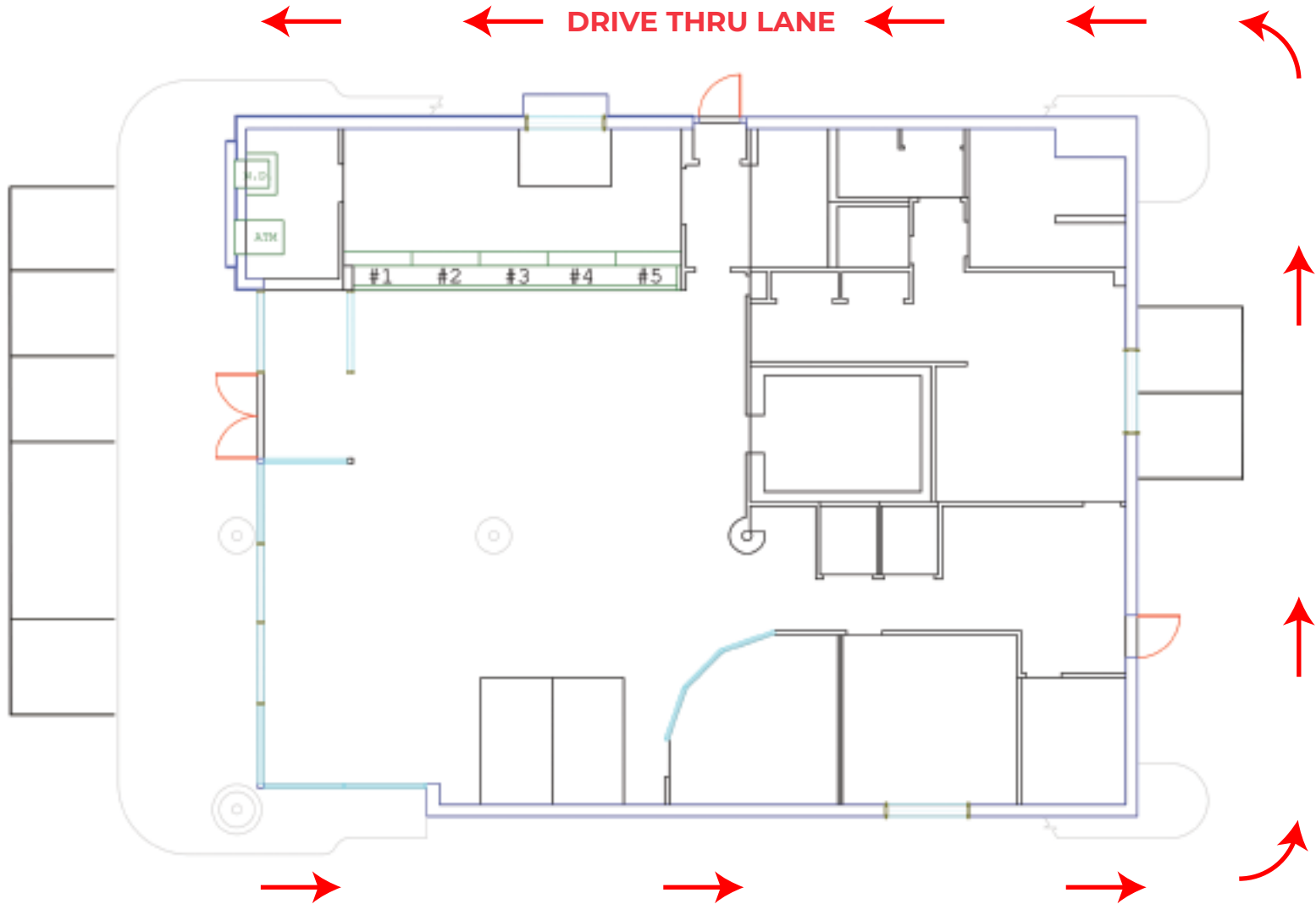
GJones@jcbarprop.com

p. 610-234-6491

c. 484-948-5217

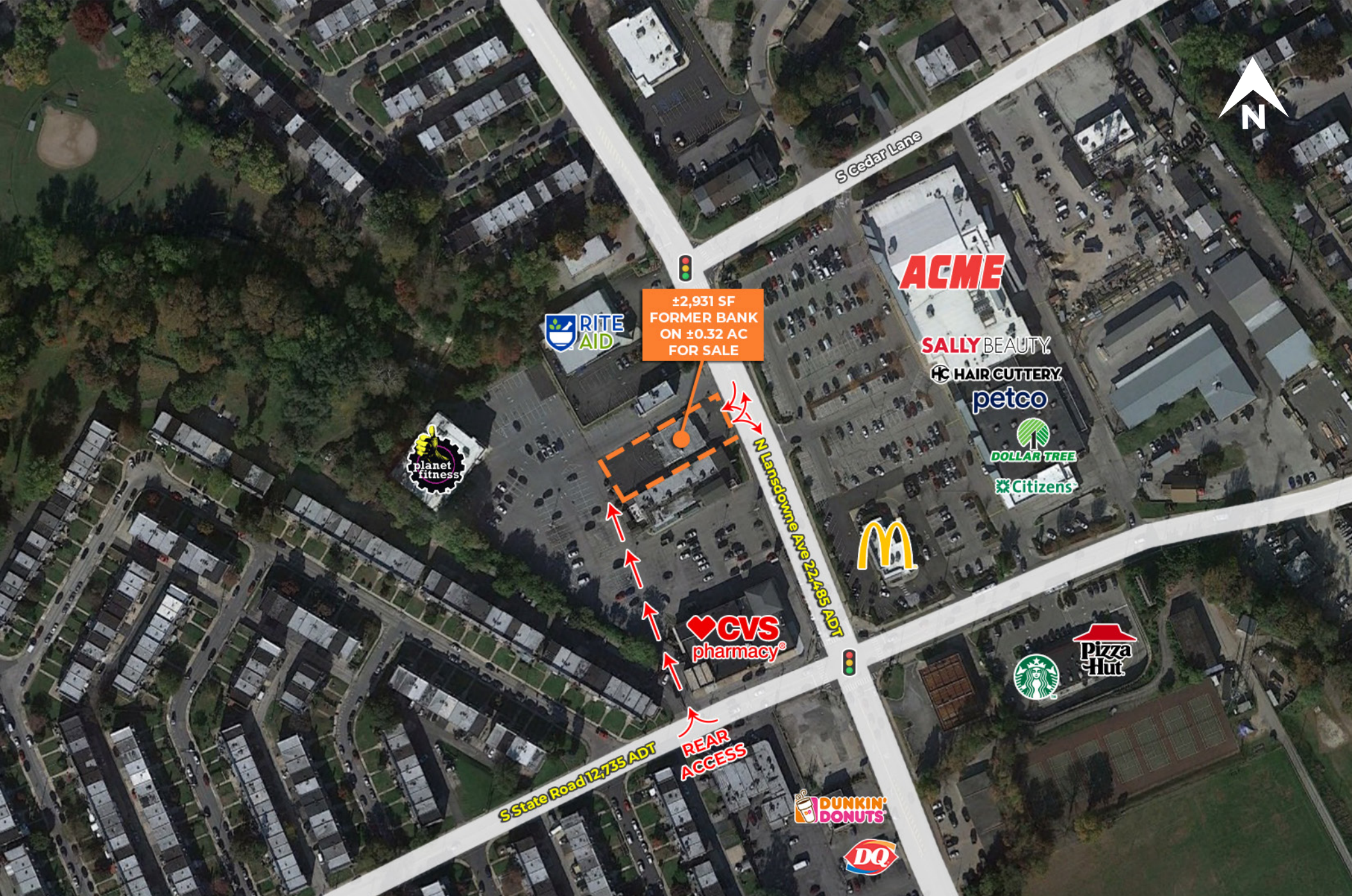


N LANSDOWNE AVENUE 22,485 ADT



Corporate Office
224 St. Charles Way, Suite 290
York, PA 17402
Conshohocken Office
100 Front Street, Suite 560
West Conshohocken, PA 19428

Floor Plan



±2,931 SF
FORMER BANK
ON ±0.32 AC
FOR SALE



Corporate Office
224 St. Charles Way, Suite 290
York, PA 17402

Conshohocken Office
100 Front Street, Suite 560
West Conshohocken, PA 19428

Local Aerial

The information and images contained herein are from sources deemed reliable. However, J.C.BAR Properties, Inc. makes no representation whatsoever as to their accuracy or authenticity. Images shown may be modified for illustrative purposes. Images may be out-of-date and not current.



Corporate Office
 224 St. Charles Way, Suite 290
 York, PA 17402

Conshohocken Office
 100 Front Street, Suite 560
 West Conshohocken, PA 19428

Market Aerial

The information and images contained herein are from sources deemed reliable. However, J.C.BAR Properties, Inc. makes no representation whatsoever as to their accuracy or authenticity. Images shown may be modified for illustrative purposes. Images may be out-of-date and not current.