

Former Bank Building For Sale

824 Lansdowne Avenue, Drexel Hill, PA 19026

±2,931 SF on ±0.32 AC For Sale



Questions? Contact Us.

Greg Jones

GJones@jcbarprop.com

p. 610-234-6491

c. 484-948-5217

Former Bank Building For Sale

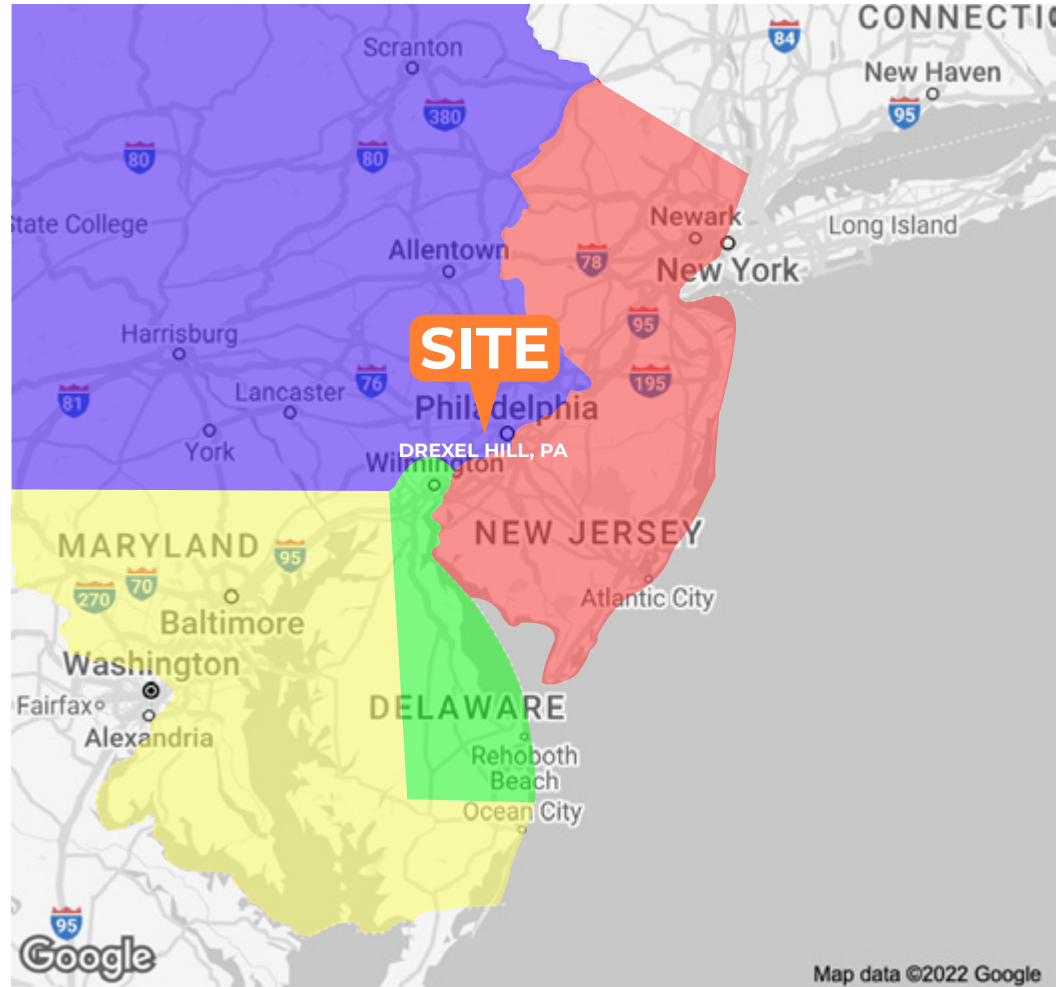
824 Lansdowne Avenue, Drexel Hill, PA 19026

±2,931 SF on ±0.32 AC For Sale

Highlights

- Rare free-standing building with drive thru available in the heart of Drexel Hill (Delaware County)
- Accessible from Lansdowne Avenue and State Road
- Across the street from the Bond Shopping Center with Acme, Dollar Tree, Petco
- Pylon sign available on Lansdowne Avenue
- Asking Price: \$800,000
- Zoning: C2

Demographic	1 Mile	3 Miles	5 Miles
Population	26,503	258,511	603,942
Households	10,022	99,397	233,983
Avg HH Income	\$100,443	\$88,882	\$87,162
Daytime Employees	9,517	72,329	201,052



Questions? Contact Us.

Greg Jones

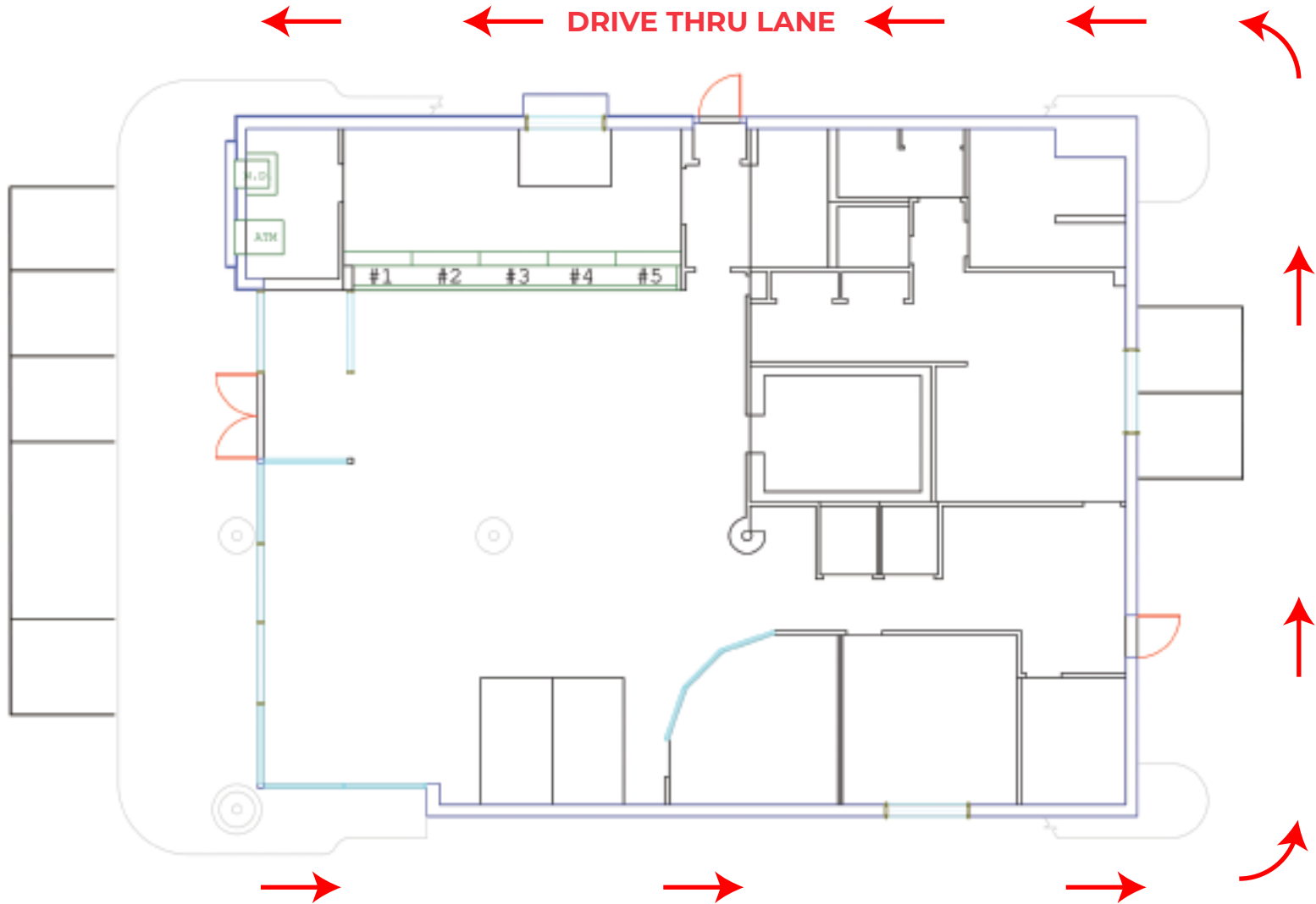
GJones@jcbarprop.com

p. 610-234-6491

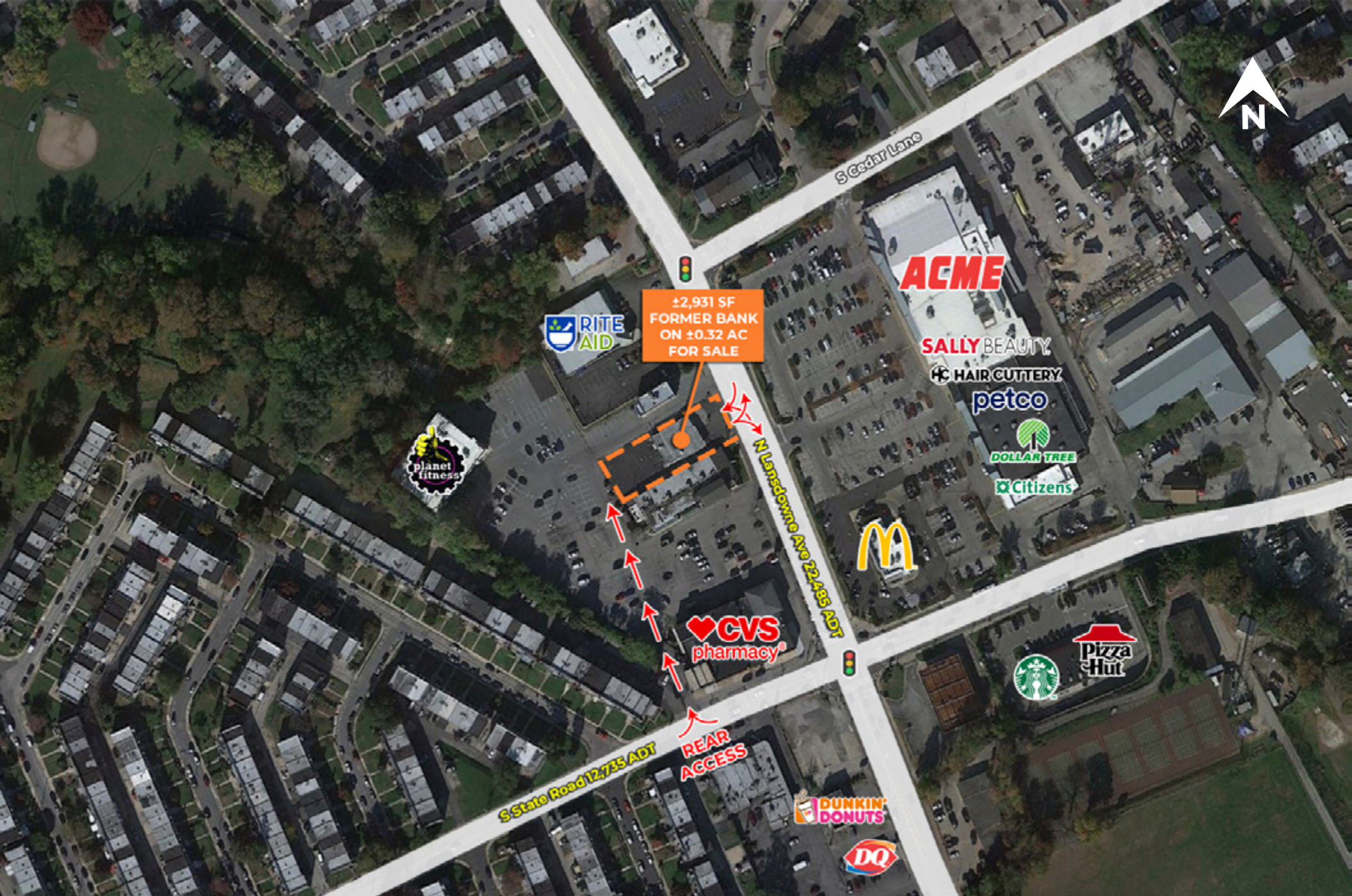
c. 484-948-5217



N LANSDOWNE AVENUE 22,485 ADT



Floor Plan



±2,931 SF
FORMER BANK
ON ±0.32 AC
FOR SALE

RITE
AID

ACME

SALLY BEAUTY

HAIR CUTTERY

petco

DOLLAR TREE

Citizens

planet
fitness

McDonald's

CVS
pharmacy

Starbucks

Pizza
Hut

S State Road 12,735 ADT

REAR
ACCESS

DUNKIN'
DONUTS

DQ

Local Aerial



Market Aerial