

# East Norriton Shopping Center

23 W Germantown Pike - East Norriton, PA 19401

±12,852 SF Available for Lease



**Questions? Contact Us.**

**Melissa Lippe**

MLippe@jcbarprop.com

p. 610-206-3319

c. 215-264-6964

**Rob V. Gothier, III**

RG3@jcbarprop.com

p. 717-761-7801

c. 717-712-4601

# East Norriton Shopping Center

23 W Germantown Pike - East Norriton, PA 19401

±12,852 SF Available for Lease

## Highlights

- Weis anchored center located along West Germantown Pike with 28,242 AADT!
- Excellent co-tenancy and ample parking
- Signage available for future retailer
- GLA: ±121,052 Square Feet

### JOIN

**weis**

FINE WINE & GOOD SPIRITS

CosmoProf

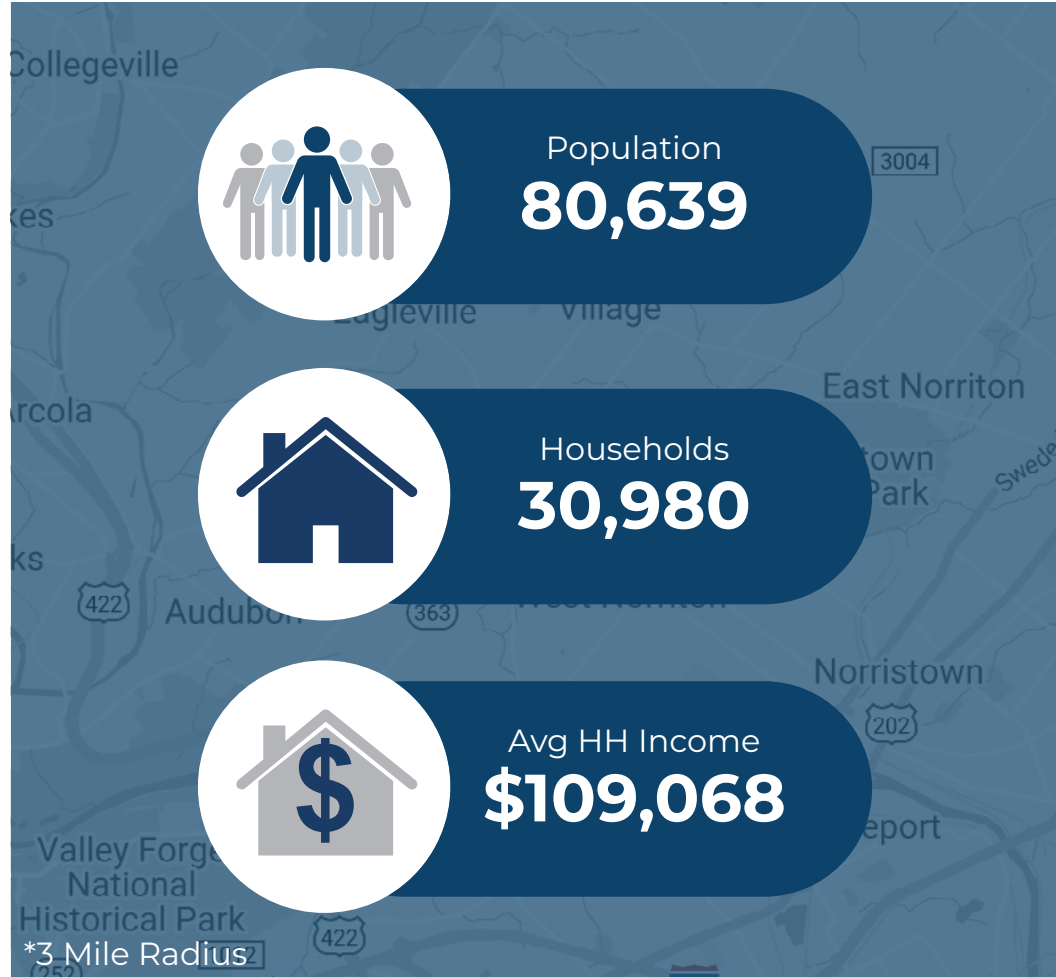
FRESENIUS MEDICAL CARE

Jefferson Health

Citizens

KIDS FIRST Swim Schools

Demographic	1 Mile	3 Miles	5 Miles
Population	10,000	80,639	173,835
Households	4,164	30,980	68,592
Avg HH Income	\$121,318	\$109,068	\$119,445
Daytime Employees	4,274	55,670	115,128



## Questions? Contact Us.

**Melissa Lippe**  
 MLippe@jcbarprop.com  
 p. 610-206-3319  
 c. 215-264-6964

**Rob V. Gothier, III**  
 RG3@jcbarprop.com  
 p. 717-761-7801  
 c. 717-712-4601

# East Norriton Shopping Center

23 W Germantown Pike - East Norriton, PA 19401

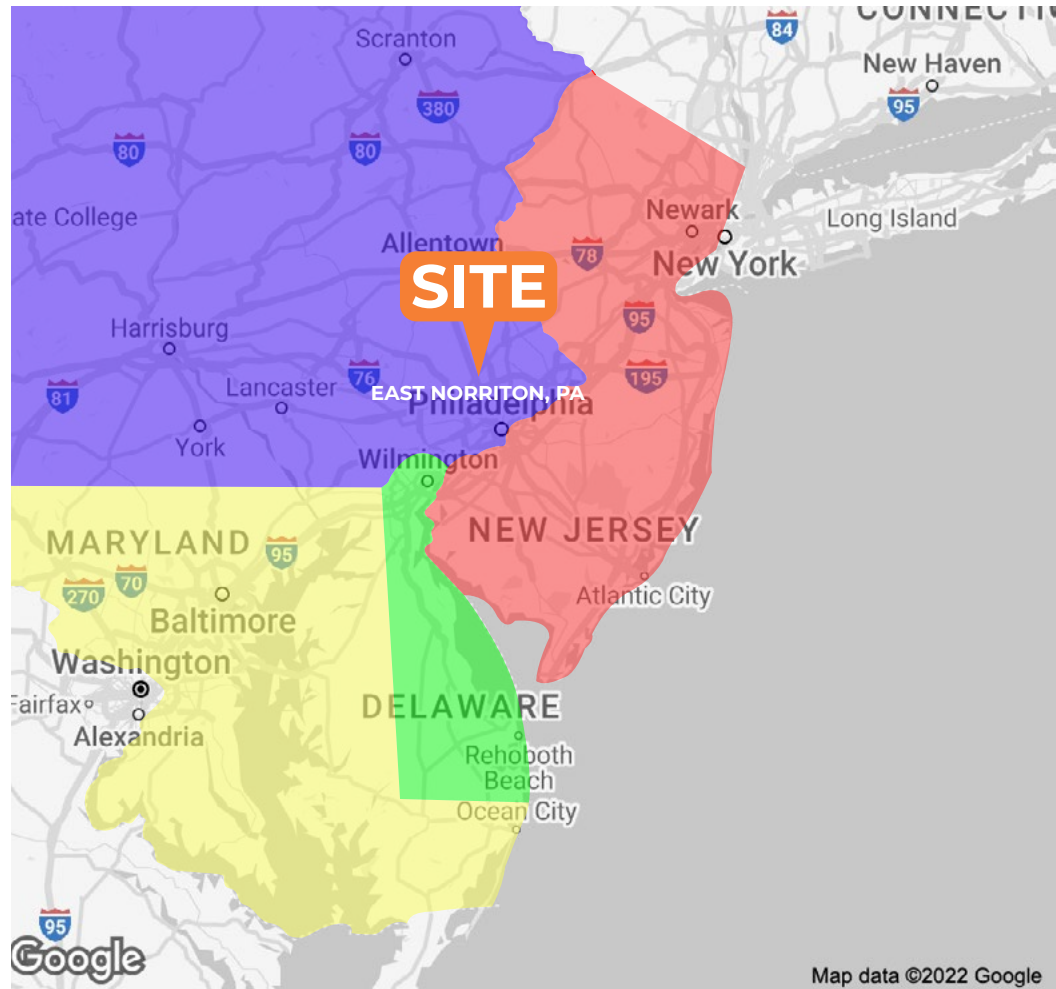
±12,852 SF Available for Lease

## About East Norriton

East Norriton is a township located in Montgomery County (the 3rd largest county in PA) and is a former farming community 8 miles northwest of Philadelphia's city limits, consisting of residential, commercial, and industrial areas. It has a population 173,835 residents within 5 miles of the shopping center and average household income of \$119,445.

Shopping malls close to East Norriton are the Plymouth Meeting Mall and the King of Prussia Mall. The township is situated on the US 202 corridor, north of King of Prussia and Norristown.

Einstein Medical Center, the major hospital for Montgomery County, sits on 87 acres in East Norriton (the former land of Wood's Golf Center) and Genuardi's (a division of Safeway Inc.) formerly had its headquarters in the township.



Map data ©2022 Google

## Questions? Contact Us.

**Melissa Lippe**

MLippe@jcbarprop.com

p. 610-206-3319

c. 215-264-6964

**Rob V. Gothier, III**

RG3@jcbarprop.com

p. 717-761-7801

c. 717-712-4601

# East Norriton Shopping Center

23 W Germantown Pike, Norristown, PA 19401



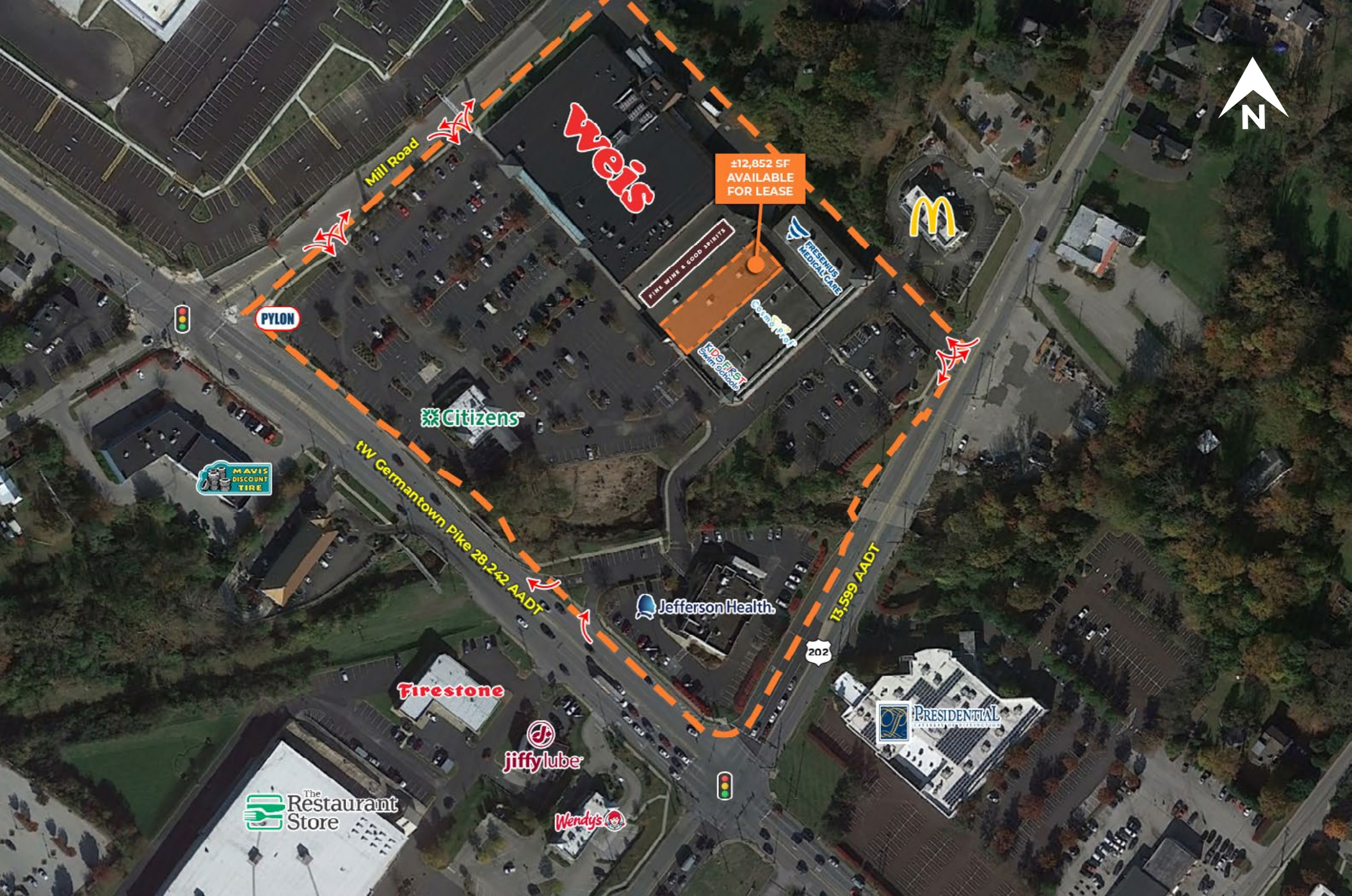
Unit	Tenant	Square Footage
1	Jefferson Health	±7,884 SF
5	Citizens Bank	±4,000 SF
13	AVAILABLE	±12,852 SF
15	Fine Wine & Good Spirits	±11,628 SF
25	Weis	±59,328 SF
2905	Kids First Swim School	±6,457 SF
2913	Hair Jordan	±1,161 SF
2915	Cosmo Prof	±2,170 SF
2917	Hallmark	±5,207 SF
2925	Fresenius Medical Care	±10,365 SF



# Site Plan

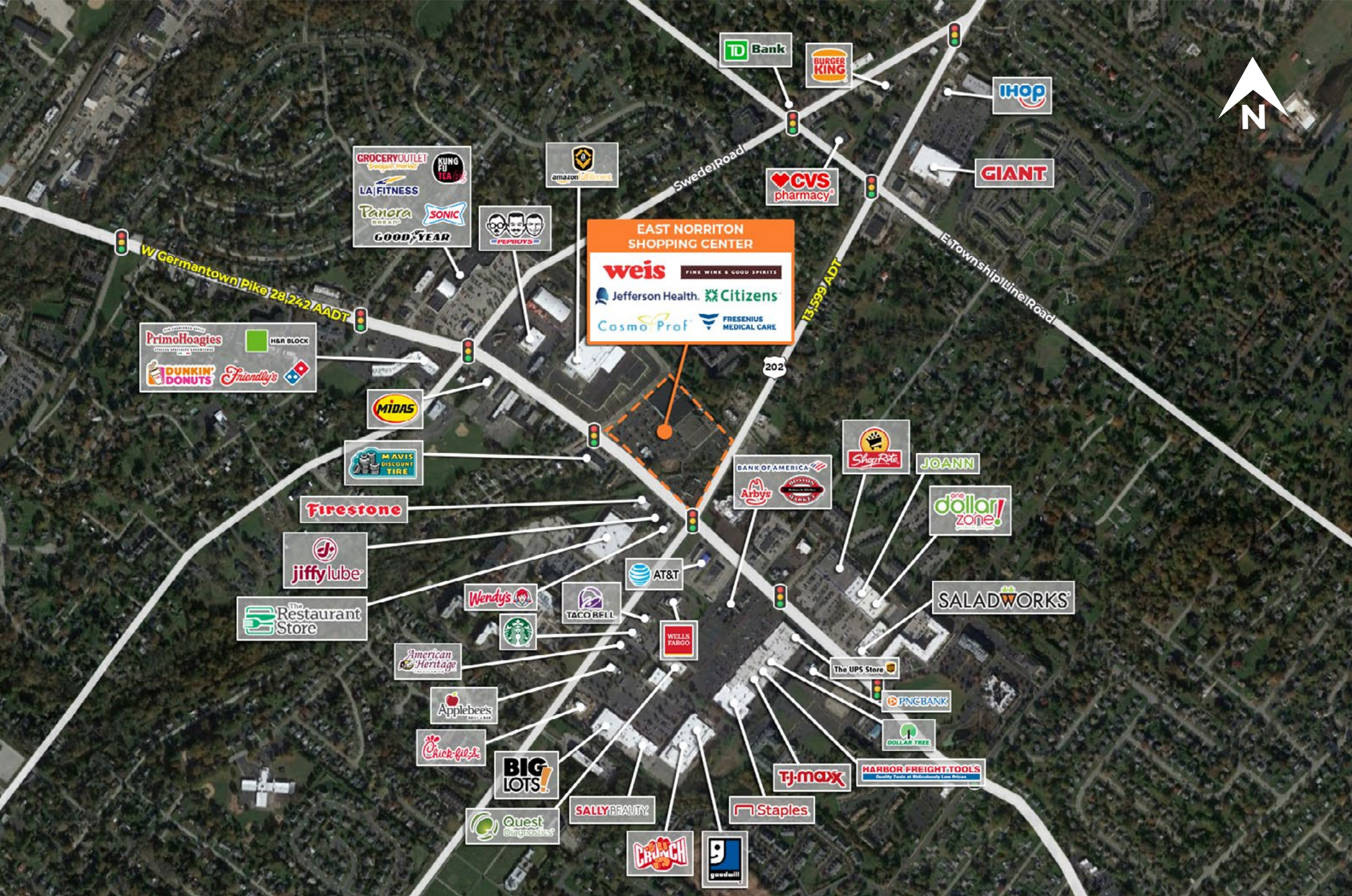


# Space Plan



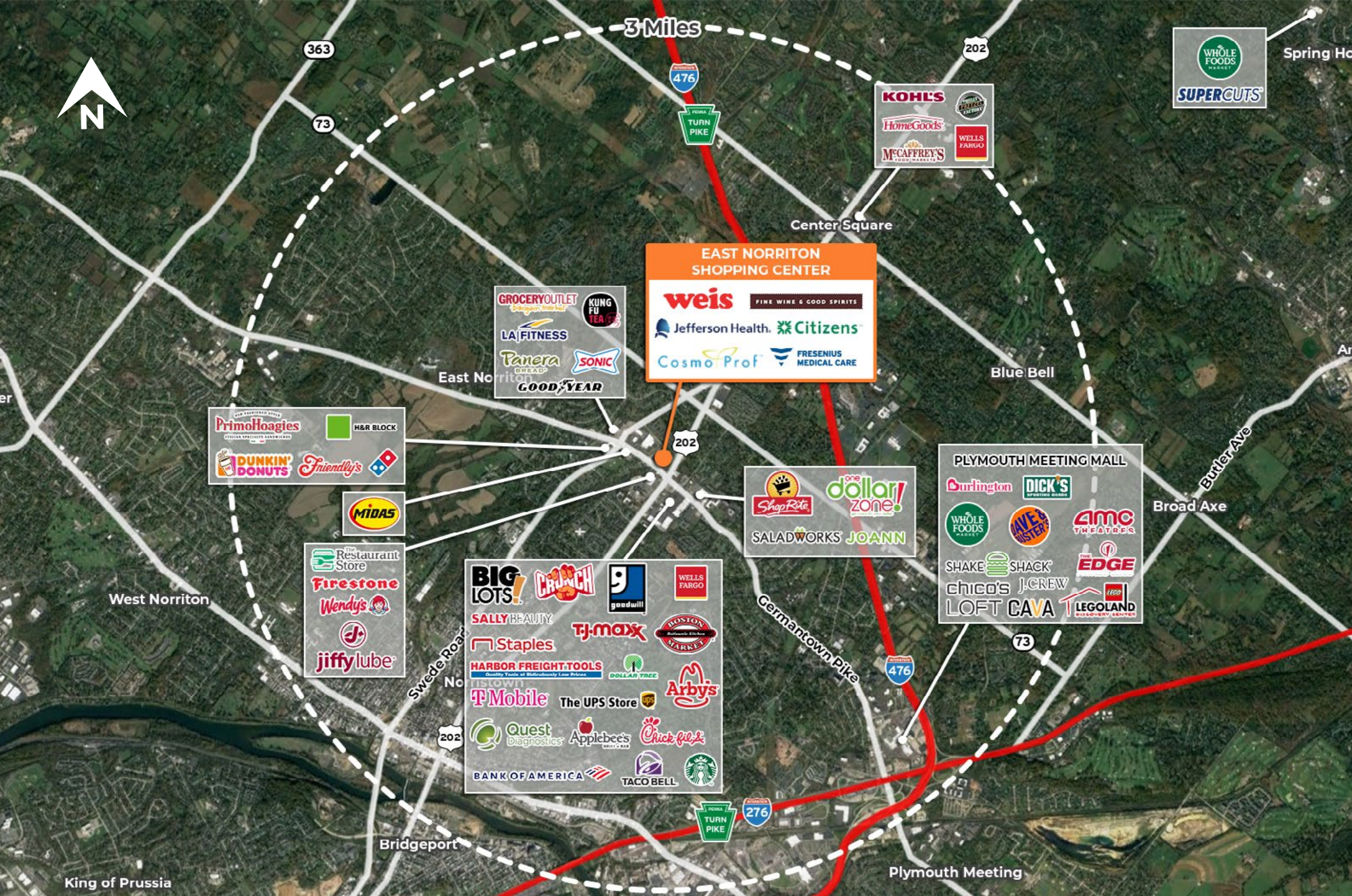
# Zoom Aerial

The information and images contained herein are from sources deemed reliable. However, J.C.BAR Properties, Inc. makes no representation whatsoever as to their accuracy or authenticity. Images shown may be modified for illustrative purposes. Images may be out-of-date and not current.



# Local Aerial

The information and images contained herein are from sources deemed reliable. However, J.C.BAR Properties, Inc. makes no representation whatsoever as to their accuracy or authenticity. Images shown may be modified for illustrative purposes. Images may be out-of-date and not current.



# Market Aerial

The information and images contained herein are from sources deemed reliable. However, J.C.BAR Properties, Inc. makes no representation whatsoever as to their accuracy or authenticity. Images shown may be modified for illustrative purposes. Images may be out-of-date and not current.