

Dominion Plaza

1600 Cedar Road, Chesapeake, VA 23322

±1,200 - 1,800 SF Available for Lease & 0.35 AC Outparcel Available!



Questions? Contact Us.

Melissa Lippe

MLippe@jcbarprop.com

p. 610-206-3319

c. 215-264-6964

Rob V. Gothier, III

RG3@jcbarprop.com

p. 717-761-7801

c. 717-712-4601

Dominion Plaza

1600 Cedar Road, Chesapeake, VA 23322

±1,200 - 1,800 SF Available for Lease & 0.35 AC Outparcel Available!

Highlights

- Join brand new Publix! Opening April 2025!
- Northeast corner of Cedar Rd (26,401 AADT) and Dominion Boulevard (34,723 AADT)
- Adjacent to Tidewater Community College with over 16,000 students
- Inline space available
- Second-most populous city in Virginia

JOIN

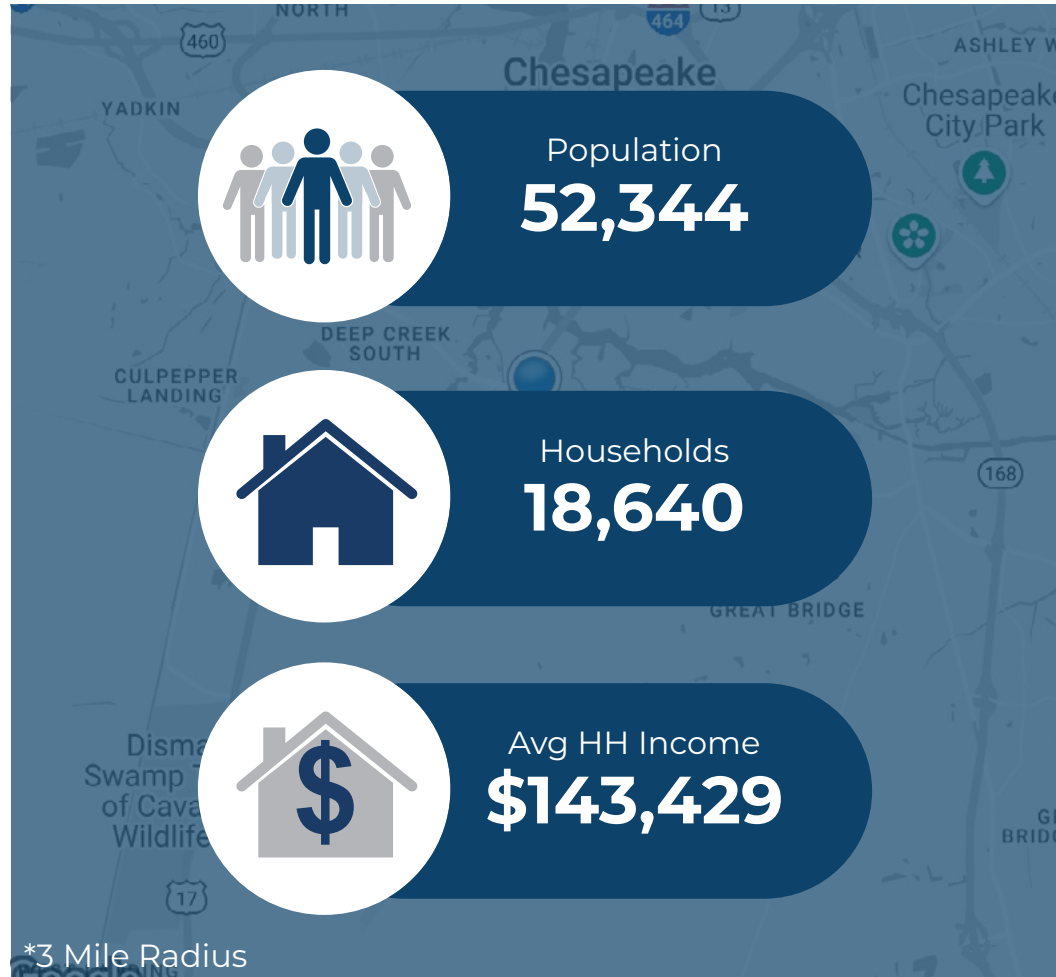
Publix



POPEYES



Demographic	1 Mile	3 Miles	5 Miles
Population	5,162	52,344	123,670
Households	1,816	18,640	46,328
Avg HH Income	\$166,392	\$143,429	\$125,284
Daytime Employees	1,811	11,607	53,471



Questions? Contact Us.

Melissa Lippe
MLippe@jcbarprop.com
p. 610-206-3319
c. 215-264-6964

Rob V. Gothier, III
RG3@jcbarprop.com
p. 717-761-7801
c. 717-712-4601

Dominion Plaza

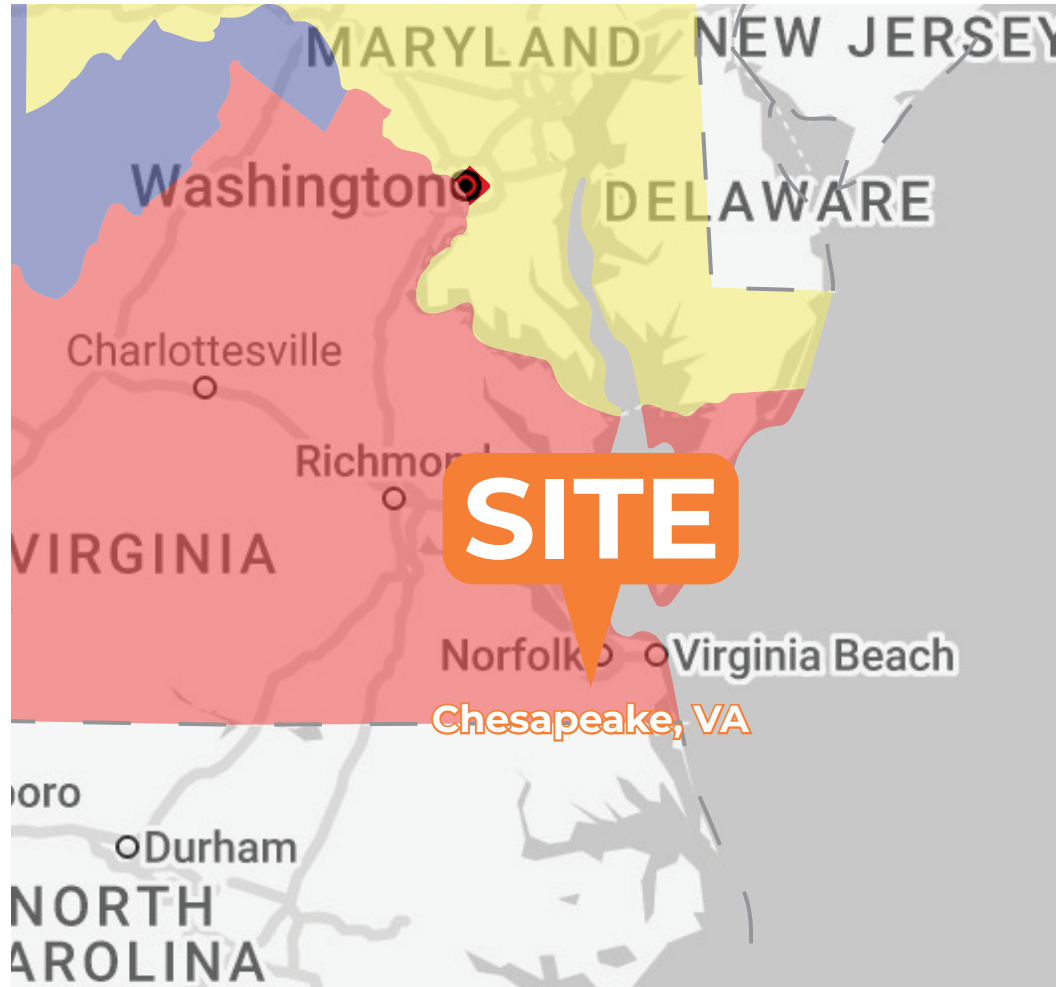
1600 Cedar Road, Chesapeake, VA 23322

±1,200 - 1,800 SF Available for Lease & 0.35 AC Outparcel Available!

About Chesapeake

Chesapeake, Virginia, is a vibrant city located in the southeastern part of the state, within the Hampton Roads metropolitan area. It spans a diverse range of landscapes, from urban areas to expansive rural and natural environments. Known for its rich history and strong connection to water, the city sits at the crossroads of the Chesapeake Bay and several rivers, making it a hub for maritime activities and outdoor recreation. Its proximity to Norfolk, Virginia Beach, and Portsmouth enhances its appeal, offering residents and visitors access to urban amenities while still maintaining a more suburban, family-friendly atmosphere.

The city is also home to several historical landmarks, including the Great Bridge Battlefield and the Chesapeake and Albemarle Canal, which reflect its colonial past and military significance. As a growing hub for commerce, technology, and logistics, Chesapeake boasts a diverse economy, with a focus on industries such as defense, manufacturing, and agriculture. The city's schools, parks, and green spaces contribute to a high quality of life, while its local government and community organizations work to foster growth, sustainability, and community engagement. With a blend of history, nature, and modern amenities, Chesapeake offers a dynamic living experience for its residents and visitors.



Questions? Contact Us.

Melissa Lippe
MLippe@jcbarprop.com
p. 610-206-3319
c. 215-264-6964

Rob V. Gothier, III
RG3@jcbarprop.com
p. 717-761-7801
c. 717-712-4601

Dominion Plaza

1600 Cedar Road, Chesapeake, VA 23322



Unit	Tenant	Square Footage
01	Publix	±48,387 SF
02	Great Wall	±1,200 SF
03	AVAILABLE	±1,200 SF
04	AVAILABLE	±1,800 SF
05	Pizza Hut	±1,200 SF
06	Sunday's Blue Box Tanning	±2,400 SF
07	Glamour Nails	±2,400 SF
OP-1	AVAILABLE	±0.35 AC
Total SF		±57,987 SF



Site Plan



Zoom Aerial



DOMINION PLAZA
±1,200 - 1,800 SF
Publix
PopeYes
Pizza Hut
SONIC

TIDEWATER COMMUNITY COLLEGE
From here, go anywhere!
16,000 Students

Walgreens

MATTRESS FIRM **GNC**
SUBWAY tropical CAFE
verizon

Local Aerial

The information and images contained herein are from sources deemed reliable. However, J.C.BAR Properties, Inc. makes no representation whatsoever as to their accuracy or authenticity. Images shown may be modified for illustrative purposes. Images may be out-of-date and not current.



Market Aerial