

Columbia East Marketplace

7351-7361 Assateague Dr, Jessup, MD 20794

±6,870 SF Available for Lease



Questions? Contact Us.

Melissa Lippe

MLippe@jcbarprop.com

p. 610-206-3319

c. 215-264-6964

Columbia East Marketplace

7351-7361 Assateague Dr, Jessup, MD 20794

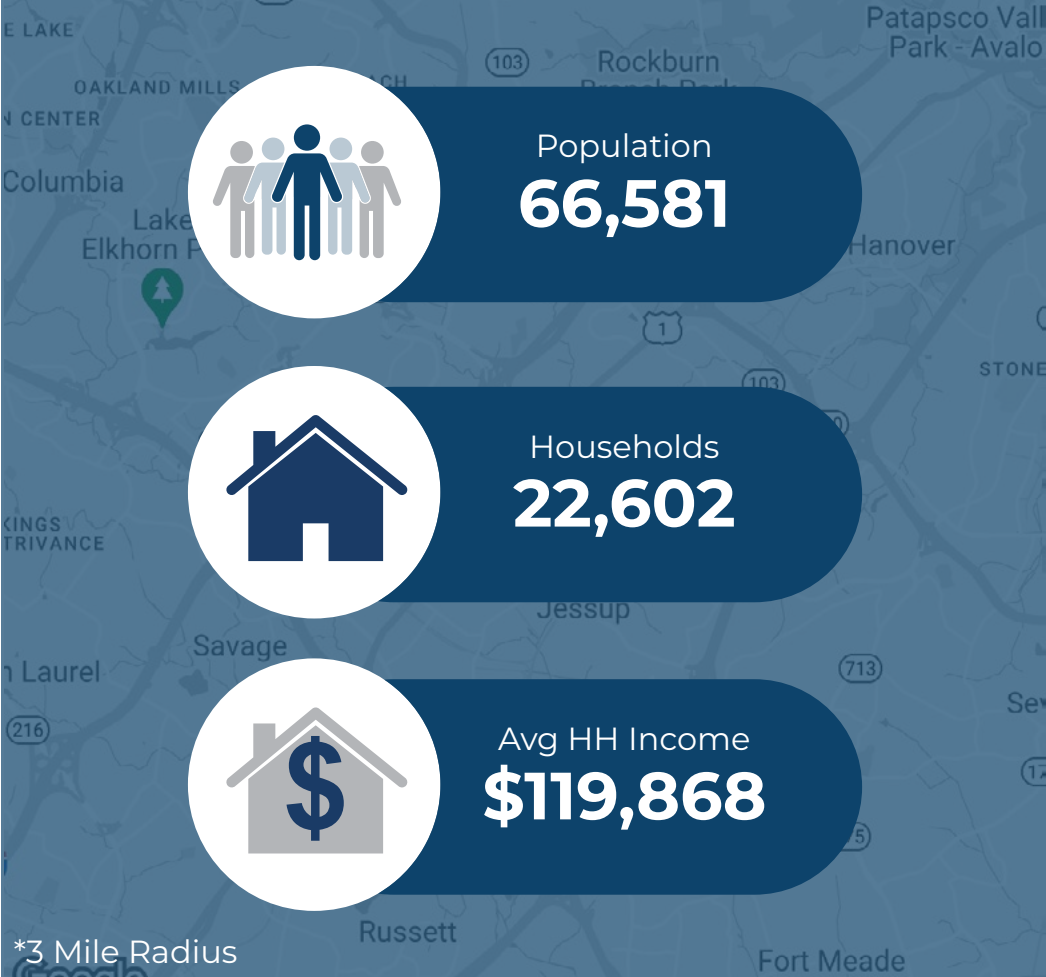
±6,870 SF Available for Lease

Highlights

- Mom's Organic Market anchored shopping center with excellent co-tenancy
- Ideal for fast casual dining, service, medical, or boutique fitness
- Located at signalized intersection of Washington Boulevard (27,912 AADT) and Waterloo Road (25,429 AADT)
- Conveniently located half mile from Interstate 95 (210,234 AADT)
- GLA: ±172,676 SF

JOIN

| Demographic | 1 Mile | 3 Miles | 5 Miles |
|-------------------|-----------|-----------|-----------|
| Population | 9,599 | 66,581 | 201,493 |
| Households | 2,891 | 22,602 | 71,956 |
| Avg HH Income | \$112,531 | \$119,868 | \$130,029 |
| Daytime Employees | 10,663 | 76,545 | 161,424 |



Questions? Contact Us.

Melissa Lippe
 MLippe@jcbarprop.com
 p. 610-206-3319
 c. 215-264-6964

The information and images contained herein are from sources deemed reliable. However, J.C.BAR Properties, Inc. makes no representation whatsoever as to their accuracy or authenticity. Images shown may be modified for illustrative purposes. Images may be out-of-date and not current.

Columbia East Marketplace

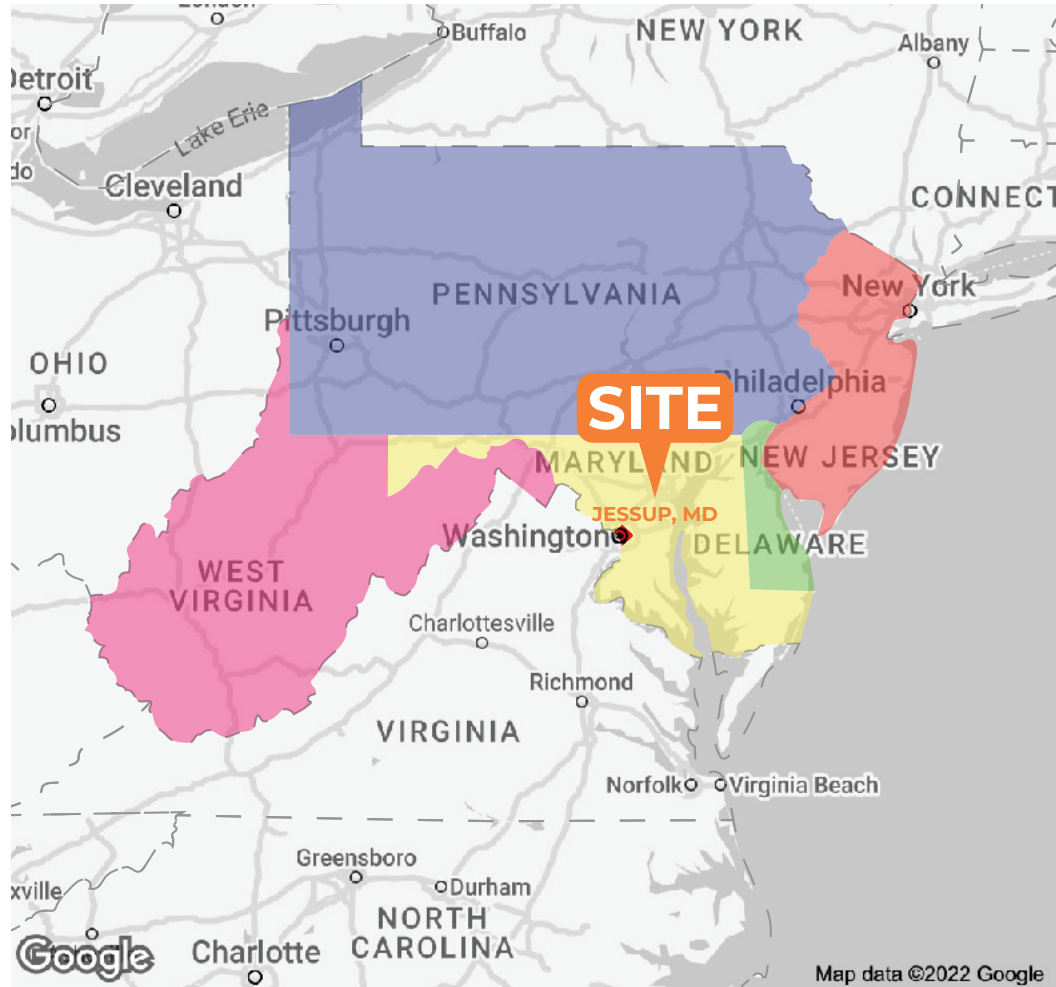
7351-7361 Assateague Dr, Jessup, MD 20794

±6,870 SF Available for Lease

About Columbia East Marketplace

Columbia East Marketplace is a ±172,676 SF grocery-anchored retail shopping center centrally located in Jessup, MD -- an affluent and growing trade area within the Baltimore-Washington retail market. The Center is anchored by MOM's Organic Market, the #1 leading independent grocer in the region (Food World, June 2020). Co-anchoring the property is Ollie's Bargain Outlet, Advanced Auto Parts, Maaco, and Goodwill. The property features a strong mix of national and regional tenants combined with an outstanding assortment of traffic generating tenants.

Located just a half mile from I-95 along MD Route 175/Waterloo Rd. The center is surrounded by strong household incomes and daytime demographics.



Questions? Contact Us.

Melissa Lippe

MLippe@jcbarprop.com

p. 610-206-3319

c. 215-264-6964

Columbia East Marketplace

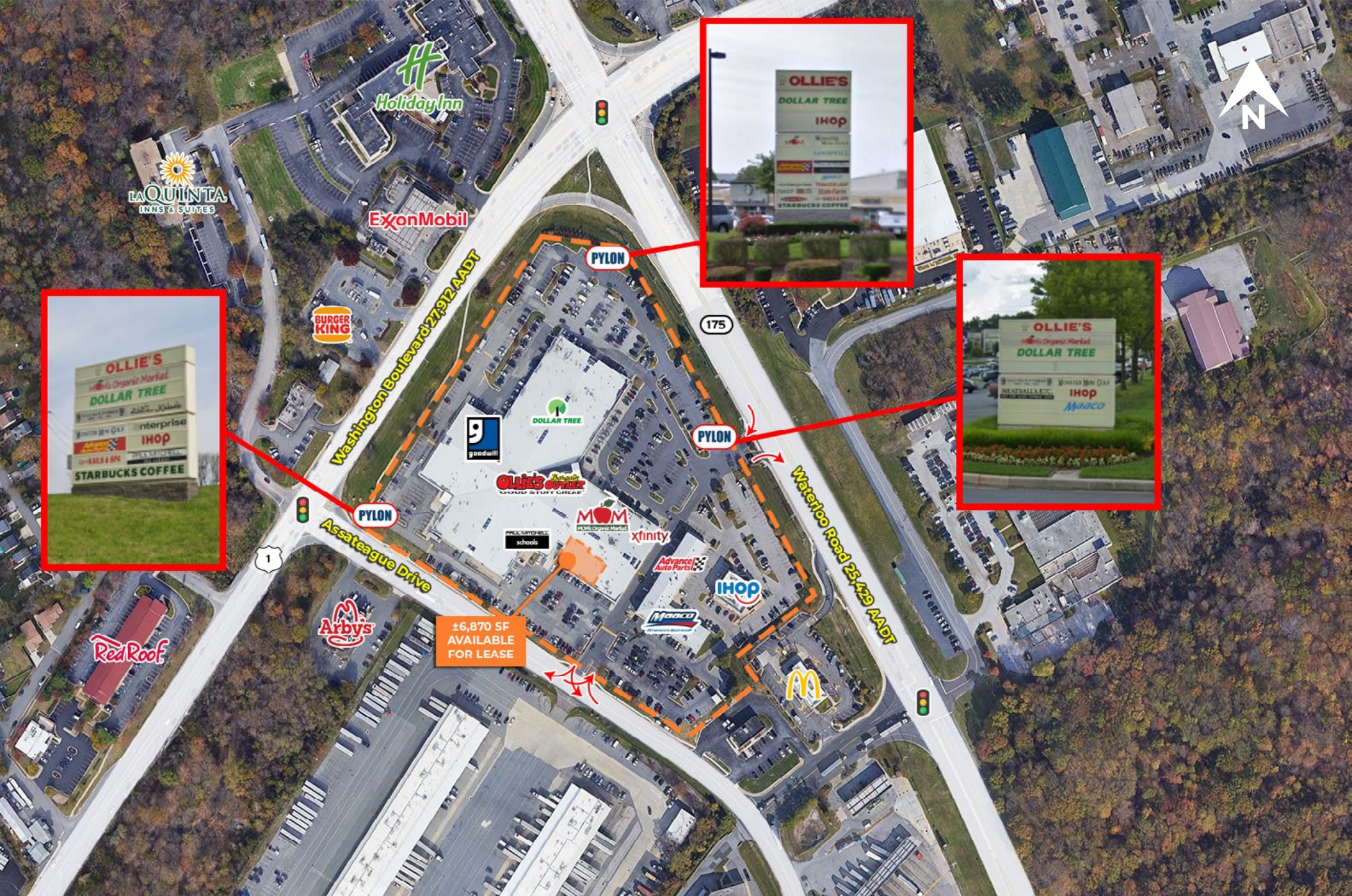
7351-7361 Assateague Drive, Jessup, MD 20794



| Unit | Tenant | Square Footage |
|------------|-------------------------|------------------|
| 10 | Panda Express | ±2,350 SF |
| 40 | Jerry's Subs and Pizza | ±1,655 SF |
| 50 | Enterprise | ±1,295 SF |
| 60 | Cricket Wireless | ±900 SF |
| 70 | Tiffany Nails & Spa | ±1,373 SF |
| 90 | Starbucks | ±1,727 SF |
| 100 | Zizi Grill | ±2,714 SF |
| 110 | Wings and Burgers | ±2,700 SF |
| 130 | Dollar Tree | ±11,362 SF |
| 150 | Ollie's Bargain Outlet | ±33,002 SF |
| 190 | Mom's Organic Market | ±10,805 SF |
| 210 | Xfinity | ±4,167 SF |
| 250 | Next Level Eye Care | ±1,315 SF |
| 260 | On Site Personnel | ±1,009 SF |
| 270 | State Farm | ±1,009 SF |
| 280 | Pollo Fiesta II | ±2,031 SF |
| 300 | AVAILABLE | ±6,870 SF |
| 340-350 | Paul Mitchell School | ±5,195 SF |
| 340-350 | Paul Mitchell School | ±11,291 SF |
| 378 | Jane's Afro Grille | ±5,291 SF |
| 380 | Monster Mini Golf | ±11,137 SF |
| 394 | Safe Splash Swim School | ±6,749 SF |
| 400 | Goodwill | ±15,312 SF |
| 430 | Paul Mitchell School | ±4,763 SF |
| 470 | Myanmar City Mart | ±2,692 SF |
| 480 | Affordable Dentures | ±2,714 SF |
| 1000 | Advanced Auto Parts | ±8,805 SF |
| 1050 | Maaco | ±7,443 SF |
| PAD | IHOP | ±5,000 SF |

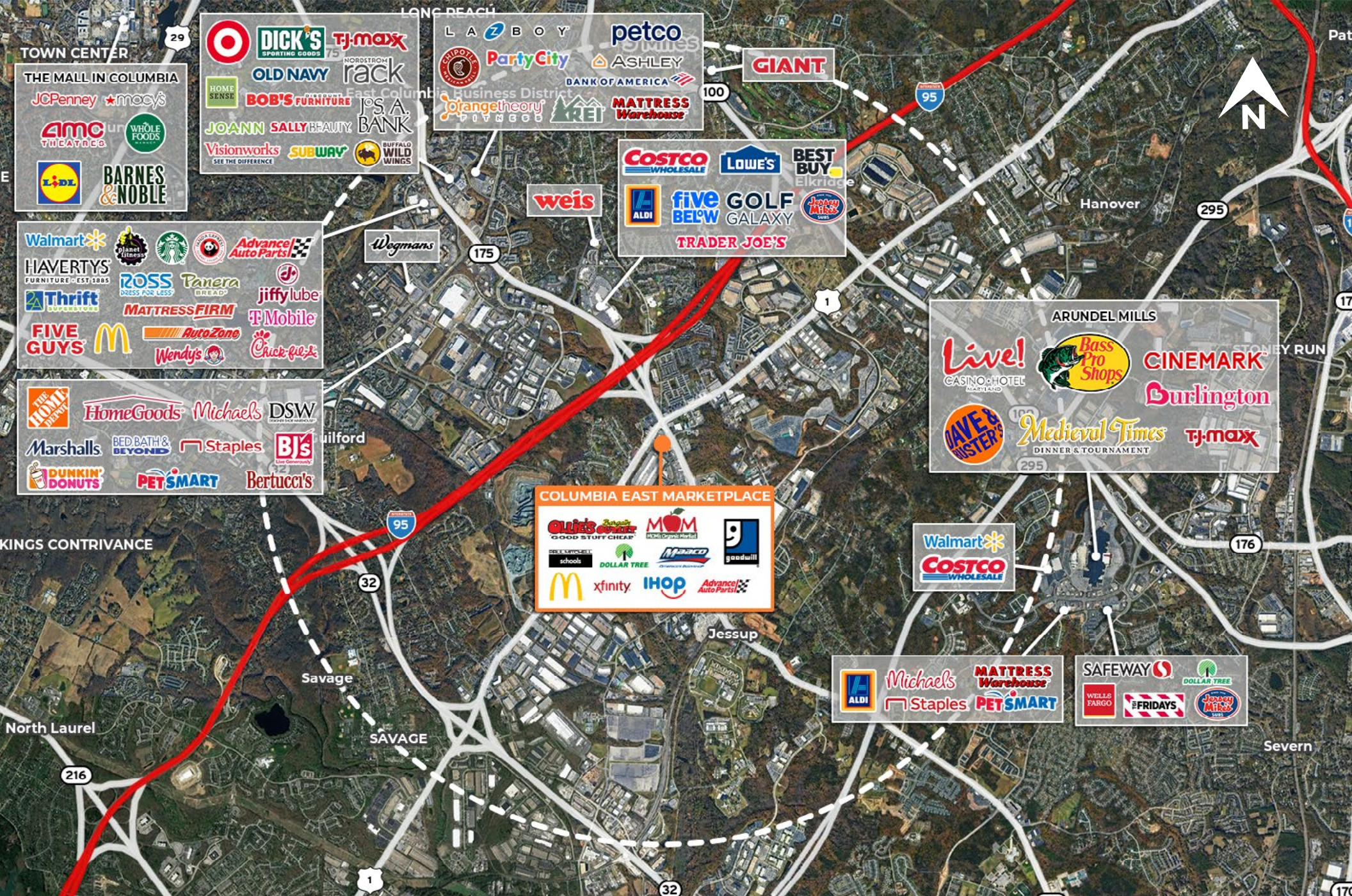


Site Plan



Local Aerial

The information and images contained herein are from sources deemed reliable. However, J.C.BAR Properties, Inc. makes no representation whatsoever as to their accuracy or authenticity. Images shown may be modified for illustrative purposes. Images may be out-of-date and not current.



TOWN CENTER

THE MALL IN COLUMBIA

JCPenney macys

AMC THEATRES WHOLE FOODS

LIDL BARNES & NOBLE

DICK'S SPORTING GOODS TJ-MAXX

OLD NAVY Nordstrom rack

HOME SENSE BOB'S FURNITURE JOS. A. BANK

VISIONWORKS SUBWAY BUFFALO WILD WINGS

LA Z BOY petco

Party City ASHLEY

ofangetheory FITNESS KREI MATTRESS Warehouse

GIANT

COSTCO WHOLESALE LOWE'S BEST BUY

ALDI five BELOW GOLF GALAXY Jersey Mike's

TRADER JOE'S

Walmart Planet Fitness Starbucks Advance Auto Parts

HAVERTY'S FURNITURE - EST 1885 ROSS Panera Bread

Thrift jiffy lube

FIVE GUYS McDonald's AutoZone T-Mobile

Wendy's Chick-fil-A

Wegmans

HomeGoods Michaels DSW

Marshalls BED BATH & BEYOND Staples BJ's

DUNKIN' DONUTS PETSMART Bertucci's

COLUMBIA EAST MARKETPLACE

Olie's Good Stuff Cheap MOM

schools DOLLAR TREE Masco goodwill

McDonald's xfinity IHOP Advance Auto Parts

ARUNDEL MILLS

Live! CASINO HOTEL Maryland Bass Pro Shops

CAVE & WISTERIA Medieval Times DINNER & TOURNAMENT

CINEMARK Burlington T.J. MAXX

Walmart COSTCO WHOLESALE

ALDI Michaels MATTRESS Warehouse

Staples PETSMART

SAFeway WELLS FARGO FRIDAYS

DOLLAR TREE Jersey Mike's

Market Aerial

The information and images contained herein are from sources deemed reliable. However, J.C.BAR Properties, Inc. makes no representation whatsoever as to their accuracy or authenticity. Images shown may be modified for illustrative purposes. Images may be out-of-date and not current.