

Columbia East Marketplace

7351-7361 Assateague Dr, Jessup, MD 20794

±1,351-6,870 SF Available for Lease



Corporate Office
224 St. Charles Way, Suite 290
York, PA 17402
Conshohocken Office
100 Front Street, Suite 560
West Conshohocken, PA 19428

Questions? Contact Us.



Melissa Lippe
MLippe@jcbarprop.com
p. 610-206-3319
c. 215-264-6964

Columbia East Marketplace

7351-7361 Assateague Dr, Jessup, MD 20794

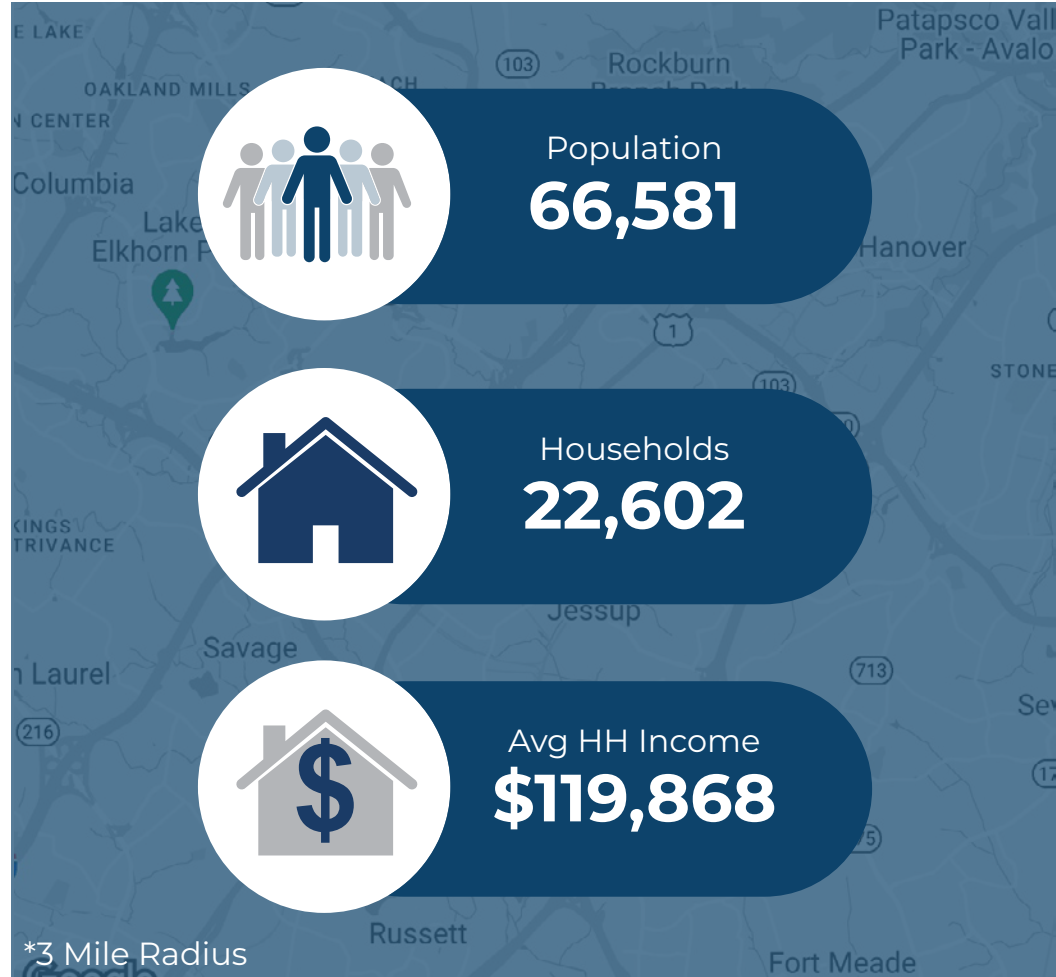
±1,351-6,870 SF Available for Lease

Highlights

- Mom's Organic Market anchored shopping center with excellent co-tenancy
- Ideal for fast casual dining, service, medical, or boutique fitness
- Located at signalized intersection of Washington Boulevard (27,912 AADT) and Waterloo Road (25,429 AADT)
- Conveniently located half mile from Interstate 95 (210,234 AADT)
- GLA: ±172,676 SF



Demographic	1 Mile	3 Miles	5 Miles
Population	9,599	66,581	201,493
Households	2,891	22,602	71,956
Avg HH Income	\$112,531	\$119,868	\$130,029
Daytime Employees	10,663	76,545	161,424



Questions? Contact Us.



Corporate Office
224 St. Charles Way, Suite 290
York, PA 17402

Conshohocken Office
100 Front Street, Suite 560
West Conshohocken, PA 19428

Melissa Lippe

MLippe@jcbarprop.com

p. 610-206-3319

c. 215-264-6964

Columbia East Marketplace

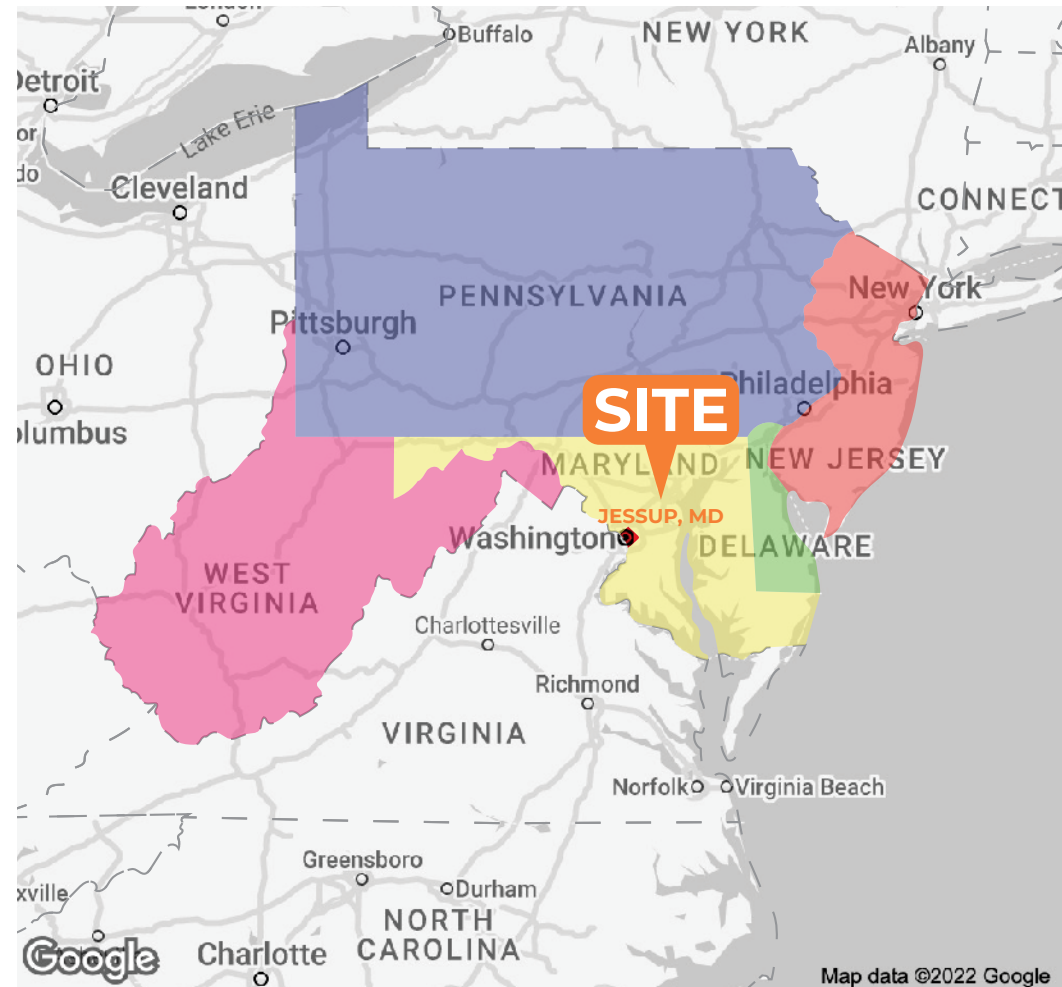
7351-7361 Assateague Dr, Jessup, MD 20794

±1,351-6,870 SF Available for Lease

About Columbia East Marketplace

Columbia East Marketplace is a ±172,676 SF grocery-anchored retail shopping center centrally located in Jessup, MD -- an affluent and growing trade area within the Baltimore-Washington retail market. The Center is anchored by MOM's Organic Market, the #1 leading independent grocer in the region (Food World, June 2020). Co-anchoring the property is Ollie's Bargain Outlet, Advanced Auto Parts, Maaco, and Goodwill. The property features a strong mix of national and regional tenants combined with an outstanding assortment of traffic generating tenants.

Located just a half mile from I-95 along MD Route 175/Waterloo Rd. The center is surrounded by strong household incomes and daytime demographics.



Questions? Contact Us.



Corporate Office
224 St. Charles Way, Suite 290
York, PA 17402

Conshohocken Office
100 Front Street, Suite 560
West Conshohocken, PA 19428

Melissa Lippe

MLippe@jcbarprop.com

p. 610-206-3319

c. 215-264-6964

Columbia East Marketplace

7351-7361 Assateague Drive, Jessup, MD 20794



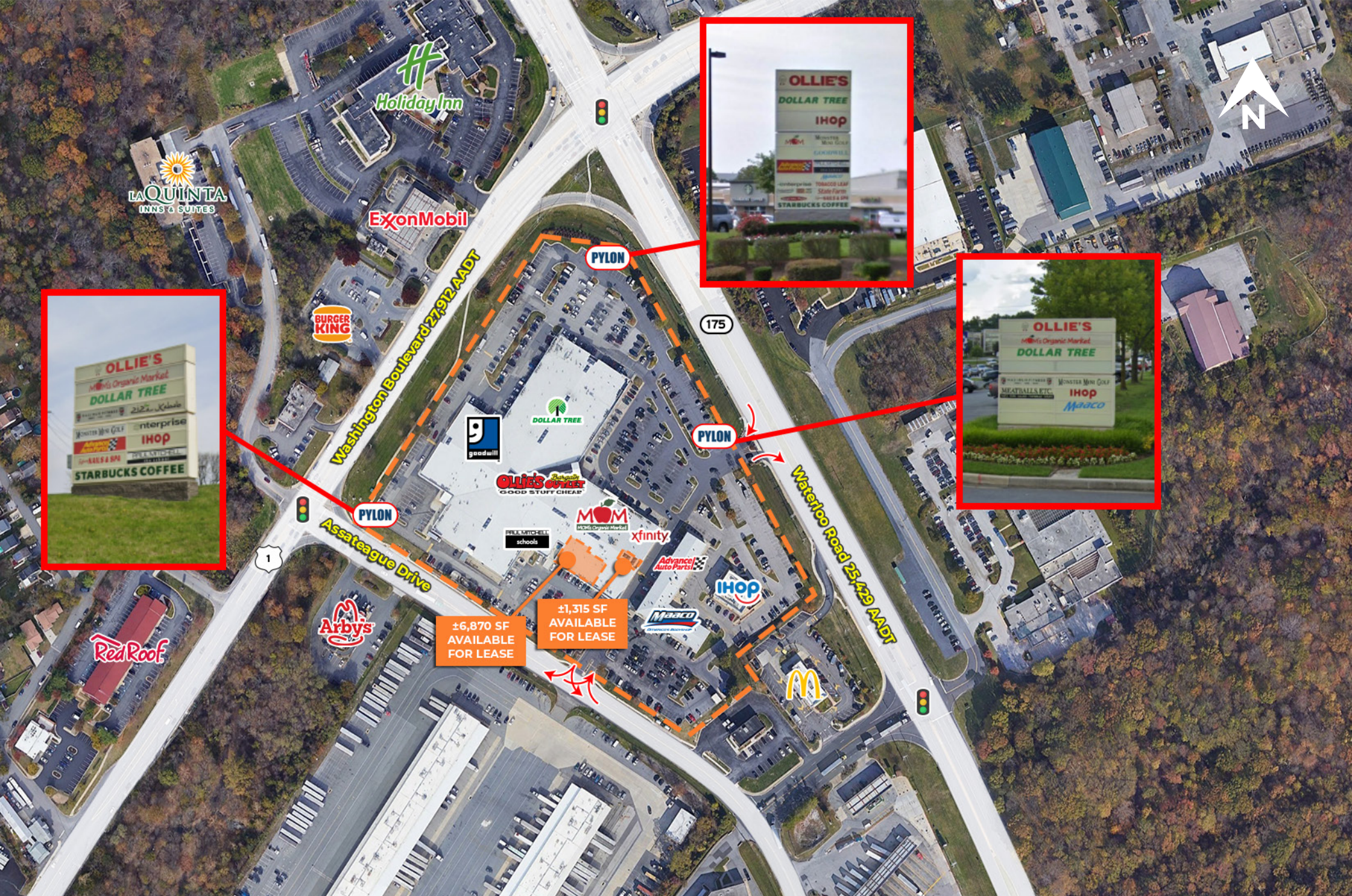
Unit	Tenant	Square Footage
10	Panda Express	±2,350 SF
40	Jerry's Subs and Pizza	±1,655 SF
50	Enterprise	±1,295 SF
60	Cricket Wireless	±900 SF
70	Tiffany Nails & Spa	±1,373 SF
90	Starbucks	±1,727 SF
100	Zizi Grill	±2,714 SF
110	Wings and Burgers	±2,700 SF
130	Dollar Tree	±11,362 SF
150	Ollie's Bargain Outlet	±33,002 SF
190	Mom's Organic Market	±10,805 SF
210	Xfinity	±4,167 SF
250	AVAILABLE	±1,315 SF
260	On Site Personnel	±1,009 SF
270	State Farm	±1,009 SF
280	Pollo Fiesta II	±2,031 SF
300	AVAILABLE	±6,870 SF
340-350	Paul Mitchell School	±5,195 SF
340-350	Paul Mitchell School	±11,291 SF
378	Jane's Afro Grille	±5,291 SF
380	Monster Mini Golf	±11,137 SF
394	Safe Splash Swim School	±6,749 SF
400	Goodwill	±15,312 SF
430	Paul Mitchell School	±4,763 SF
470	Myanmar City Mart	±2,692 SF
480	Affordable Dentures	±2,714 SF
1000	Advanced Auto Parts	±8,805 SF
1050	Maaco	±7,443 SF
PAD	IHOP	±5,000 SF



Corporate Office
224 St. Charles Way, Suite 290
York, PA 17402

Conshohocken Office
100 Front Street, Suite 560
West Conshohocken, PA 19428

Site Plan

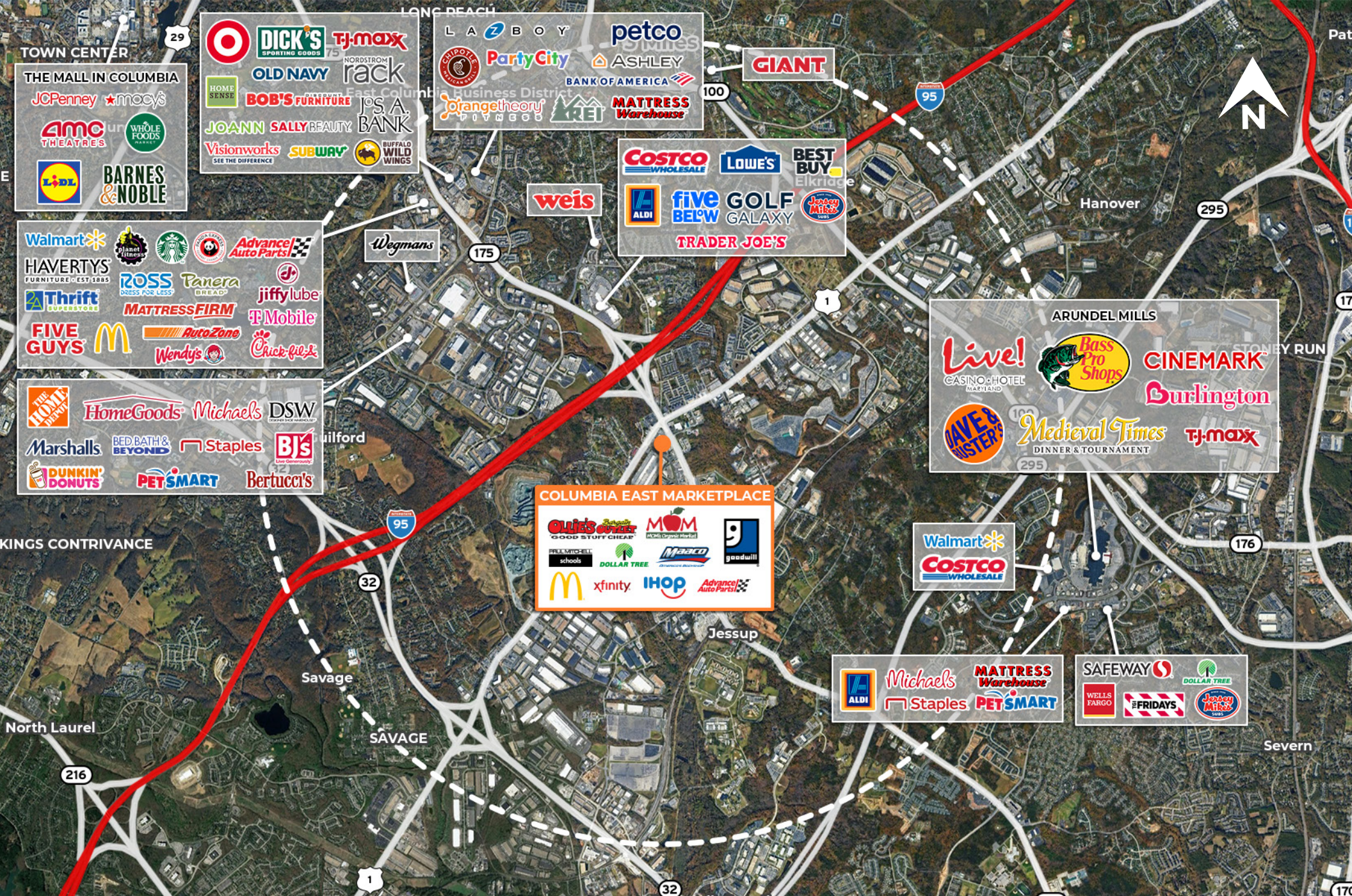


Corporate Office
 224 St. Charles Way, Suite 290
 York, PA 17402

Conshohocken Office
 100 Front Street, Suite 560
 West Conshohocken, PA 19428

Local Aerial

The information and images contained herein are from sources deemed reliable. However, J.C.BAR Properties, Inc. makes no representation whatsoever as to their accuracy or authenticity. Images shown may be modified for illustrative purposes. Images may be out-of-date and not current.



Corporate Office
 224 St. Charles Way, Suite 290
 York, PA 17402

Conshohocken Office
 100 Front Street, Suite 560
 West Conshohocken, PA 19428

Market Aerial

The information and images contained herein are from sources deemed reliable. However, J.C.BAR Properties, Inc. makes no representation whatsoever as to their accuracy or authenticity. Images shown may be modified for illustrative purposes. Images may be out-of-date and not current.