

Broad & Hunting Plaza

4229 N Broad Street - Philadelphia, PA 19140

±4,576 SF Available For Lease



Questions? Contact Us.

Bakari White

BWhite@jcbarprop.com

p. 610-206-3319

c. 215-495-9756

Greg Jones

GJones@jcbarprop.com

p. 610-234-6491

c. 484-948-5217

Broad & Hunting Plaza

4229 N Broad Street - Philadelphia, PA 19140

±4,576 SF Available For Lease

Highlights

- Premiere retail space at the signalized intersection of Broad Street and Roosevelt Boulevard
- Broad Street with 35,200 AADT
- Roosevelt Boulevard with 20,680 AADT
- Easily accessible to public transportation

JOIN

Walgreens

POPEYES



H&R BLOCK



Demographic

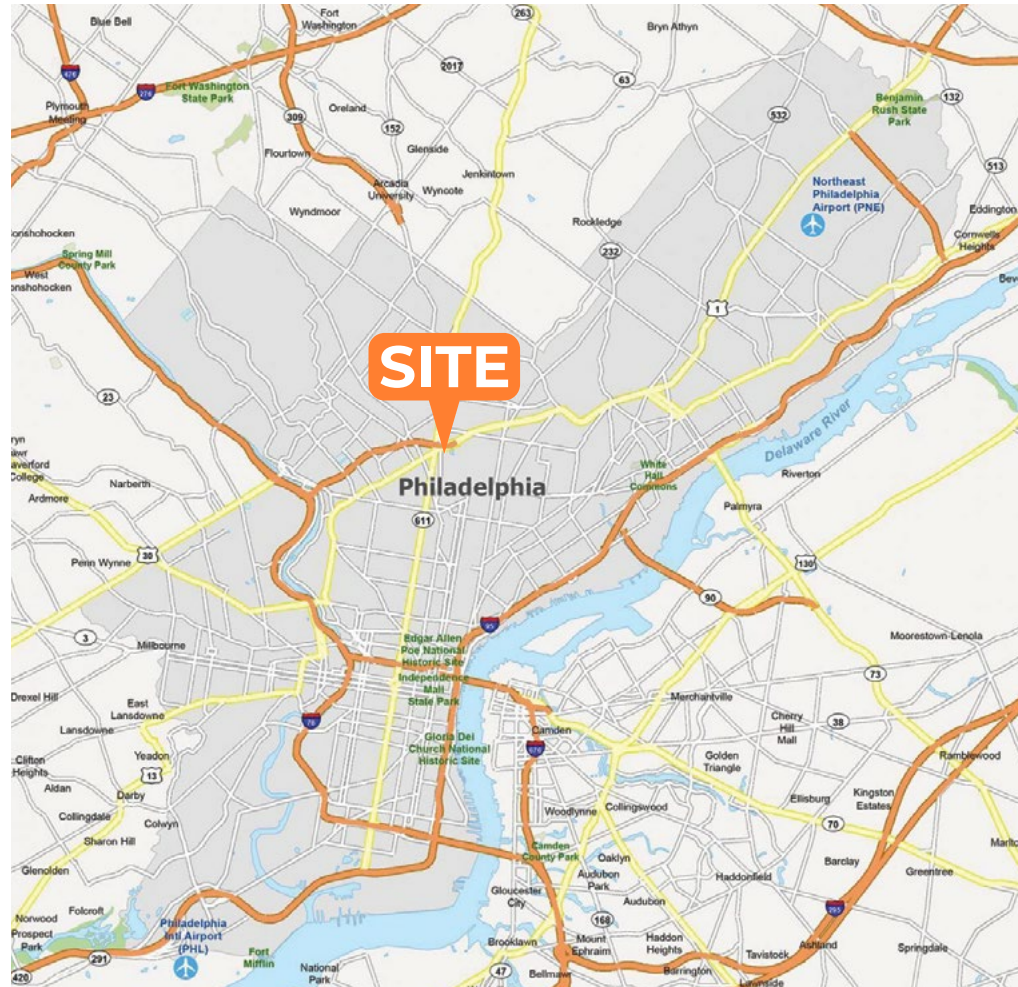
0.5 Mile

1 Mile

1.5 Miles

Population	11,805	56,355	105,976
Households	4,465	20,555	38,913
Avg HH Income	\$63,119	\$56,546	\$59,649
Daytime Employees	1,814	14,896	31,769

Map data ©2023 Google



Questions? Contact Us.

Bakari White

BWhite@jcbarprop.com

p. 610-206-3319

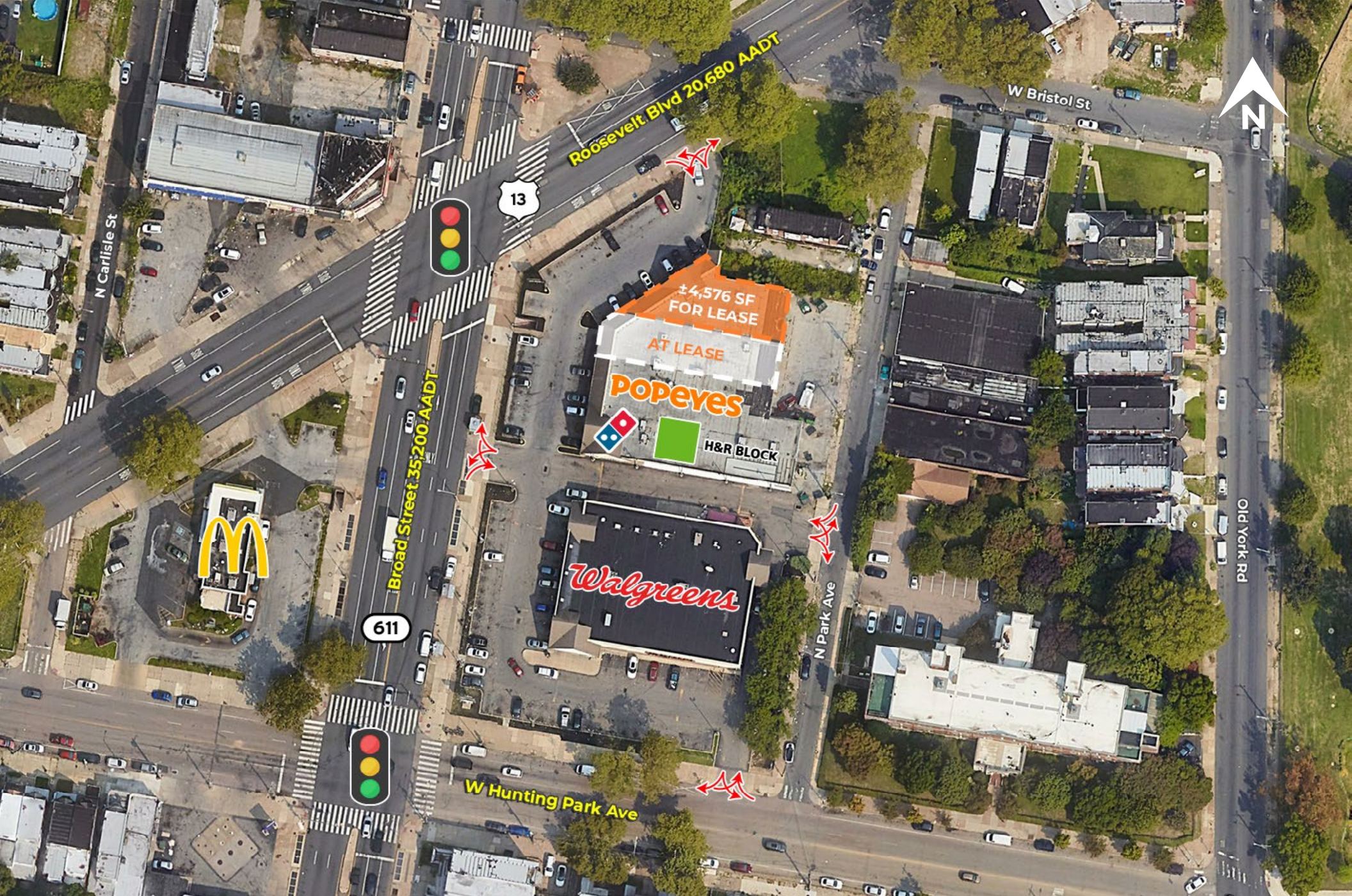
c. 215-495-9756

Greg Jones

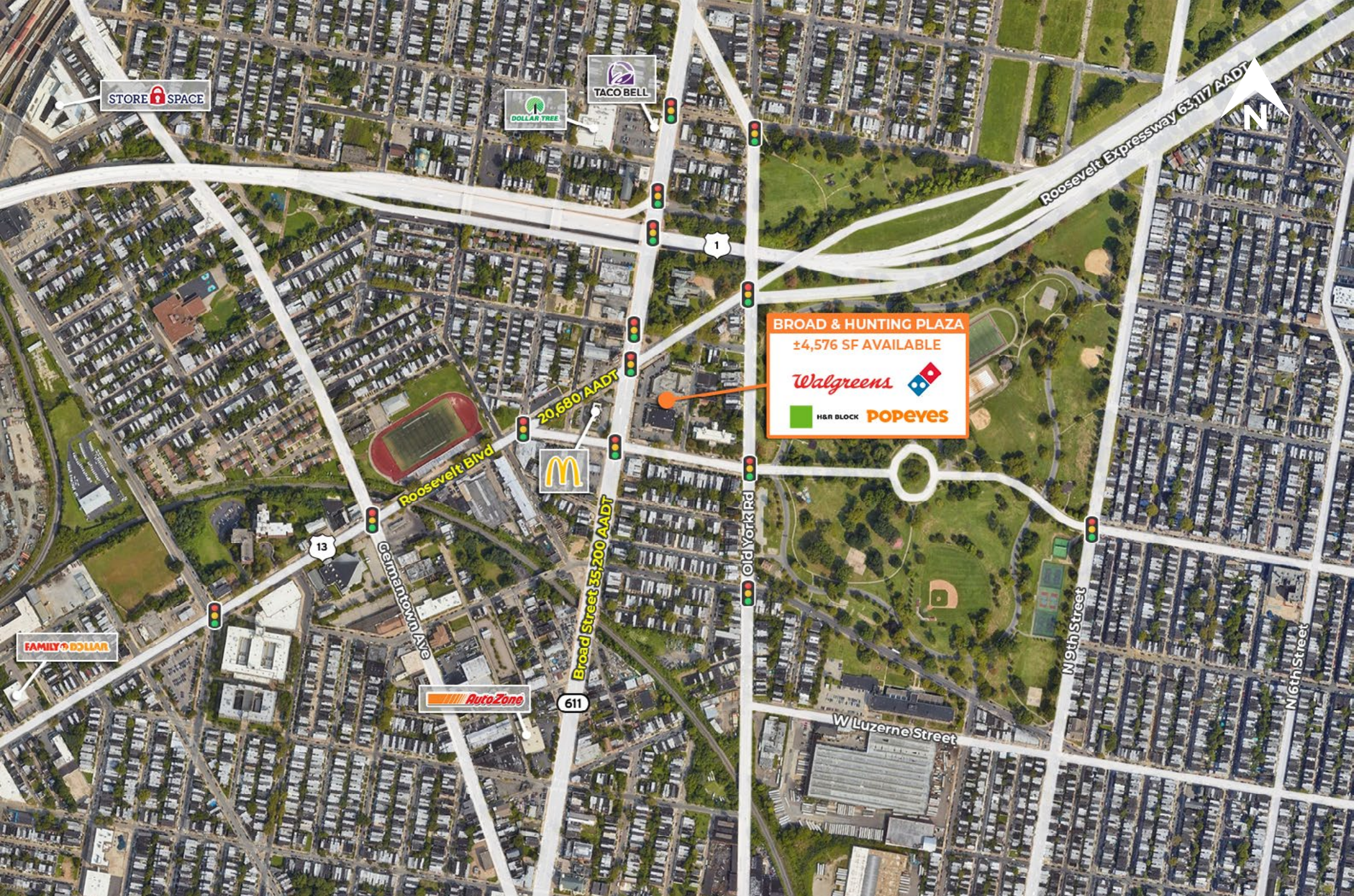
GJones@jcbarprop.com

p. 610-234-6491

c. 484-948-5217



Zoom Aerial



STORE SPACE

DOLLAR TREE

TACO BELL

McDonald's

AutoZone

FAMILY DOLLAR

BROAD & HUNTING PLAZA
±4,576 SF AVAILABLE
Walgreens
H&R BLOCK POPEYES

20,680 AADT

Broad Street 35,200 AADT

Roosevelt Expressway 63,117 AADT

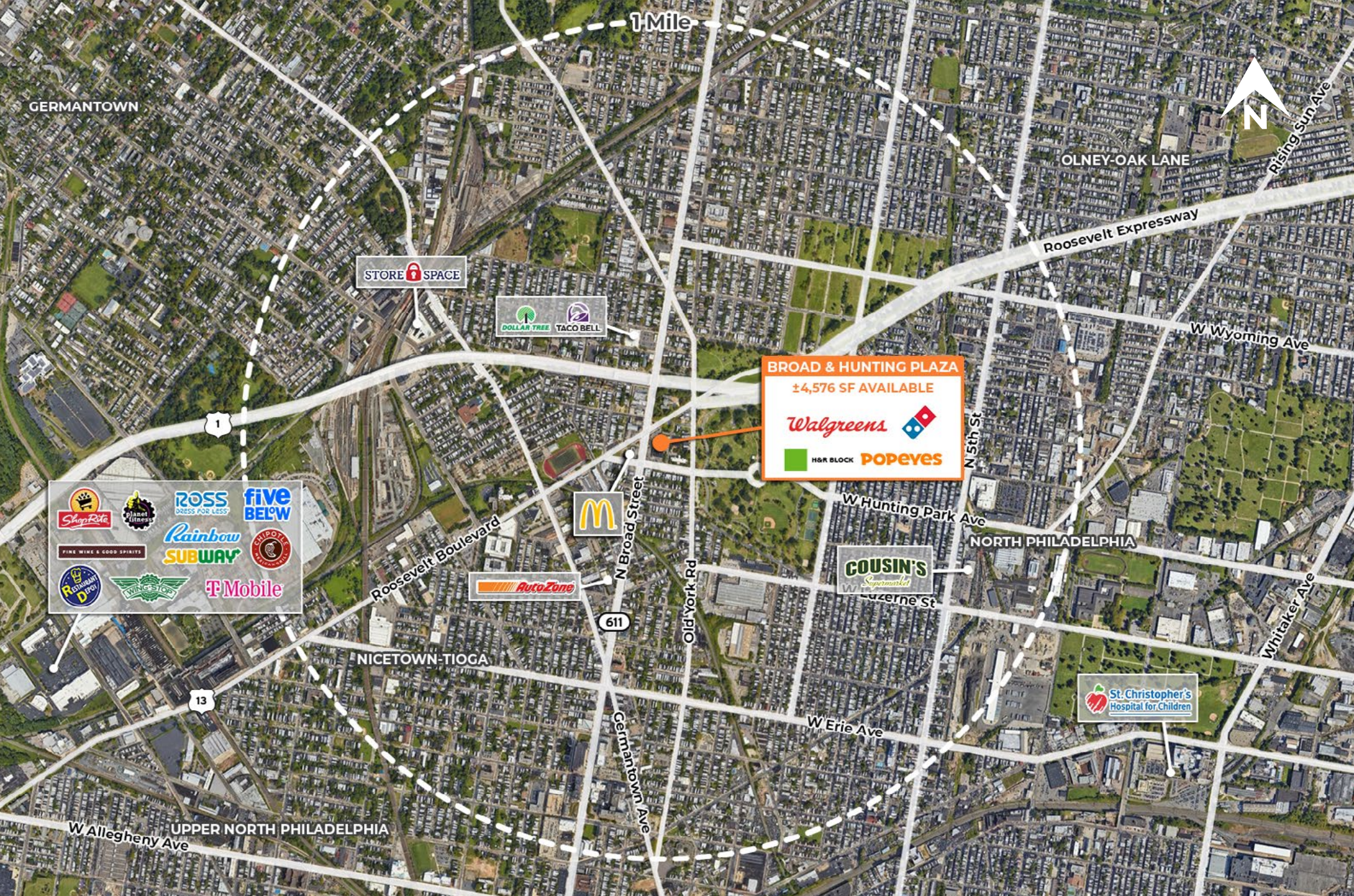
13

611

N

Local Aerial

The information and images contained herein are from sources deemed reliable. However, J.C.BAR Properties, Inc. makes no representation whatsoever as to their accuracy or authenticity. Images shown may be modified for illustrative purposes. Images may be out-of-date and not current.



Market Aerial