

980 S Richland Avenue

York, PA 17403

Outparcels Available for Sale or Lease

NOW ON THE MARKET!



Corporate Office
224 St. Charles Way, Suite 290
York, PA 17402
Conshohocken Office
100 Front Street, Suite 560
West Conshohocken, PA 19428

Questions? Contact Us.



Greg Jones
GJones@jcbarprop.com
p. 610-234-6491
c. 484-948-5217

980 S Richland Avenue

York, PA 17403

Outparcels Available for Sale or Lease

NOW ON THE MARKET!

Highlights

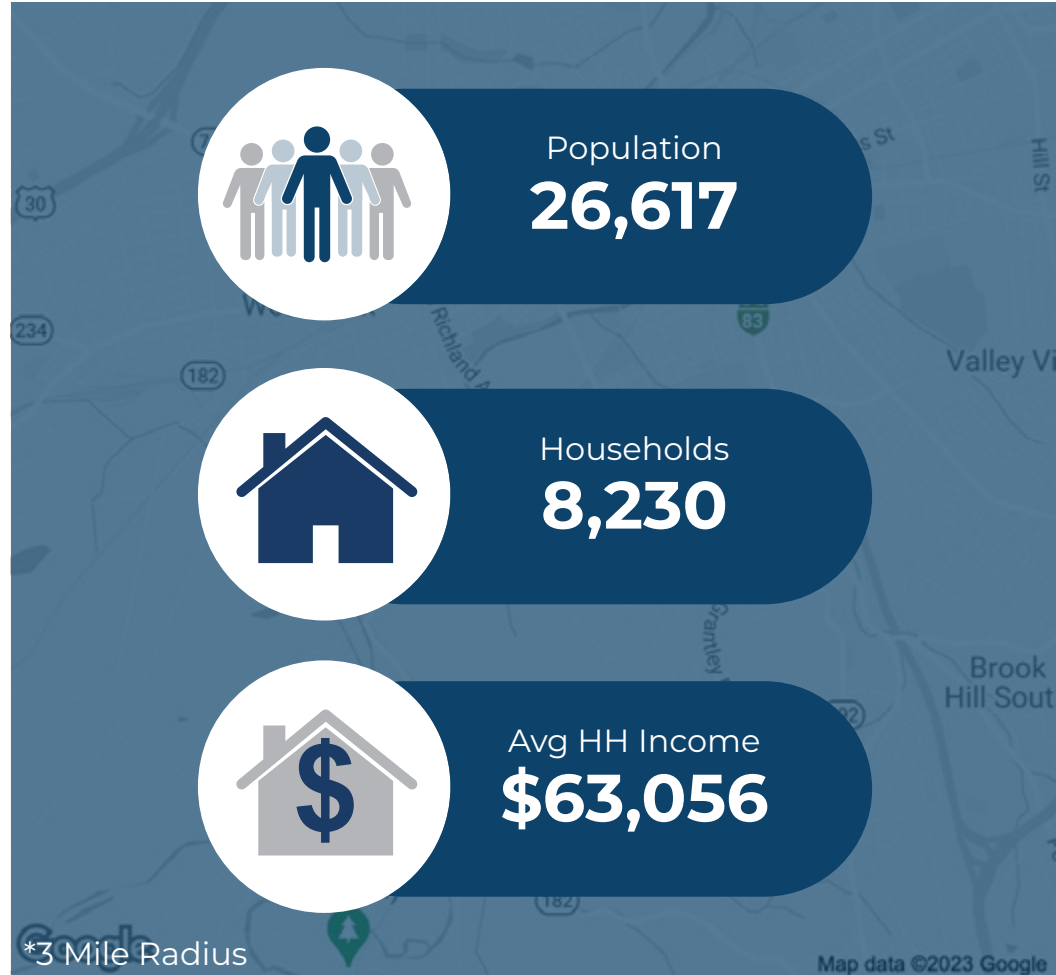
- Pad Site Available
- Join High Volume Lidl Grocery Store
- Excellent Visibility to Richland Ave. with over 18,000 AADT
- Close Proximity to York College along with strong residential growth

JOIN



Demographic	1 Mile	3 Miles	5 Miles
Population	12,200	79,743	145,581
Households	3,494	31,138	57,889
Avg HH Income	\$114,050	\$81,445	\$96,048

Traffic Count S Richland Avenue 18,480 AADT



Questions? Contact Us.



Corporate Office
224 St. Charles Way, Suite 290
York, PA 17402

Conshohocken Office
100 Front Street, Suite 560
West Conshohocken, PA 19428

Greg Jones

GJones@jcbarprop.com
p. 610-234-6491
c. 484-948-5217



Corporate Office
 224 St. Charles Way, Suite 290
 York, PA 17402

Conshohocken Office
 100 Front Street, Suite 560
 West Conshohocken, PA 19428

Site Plan Fit A

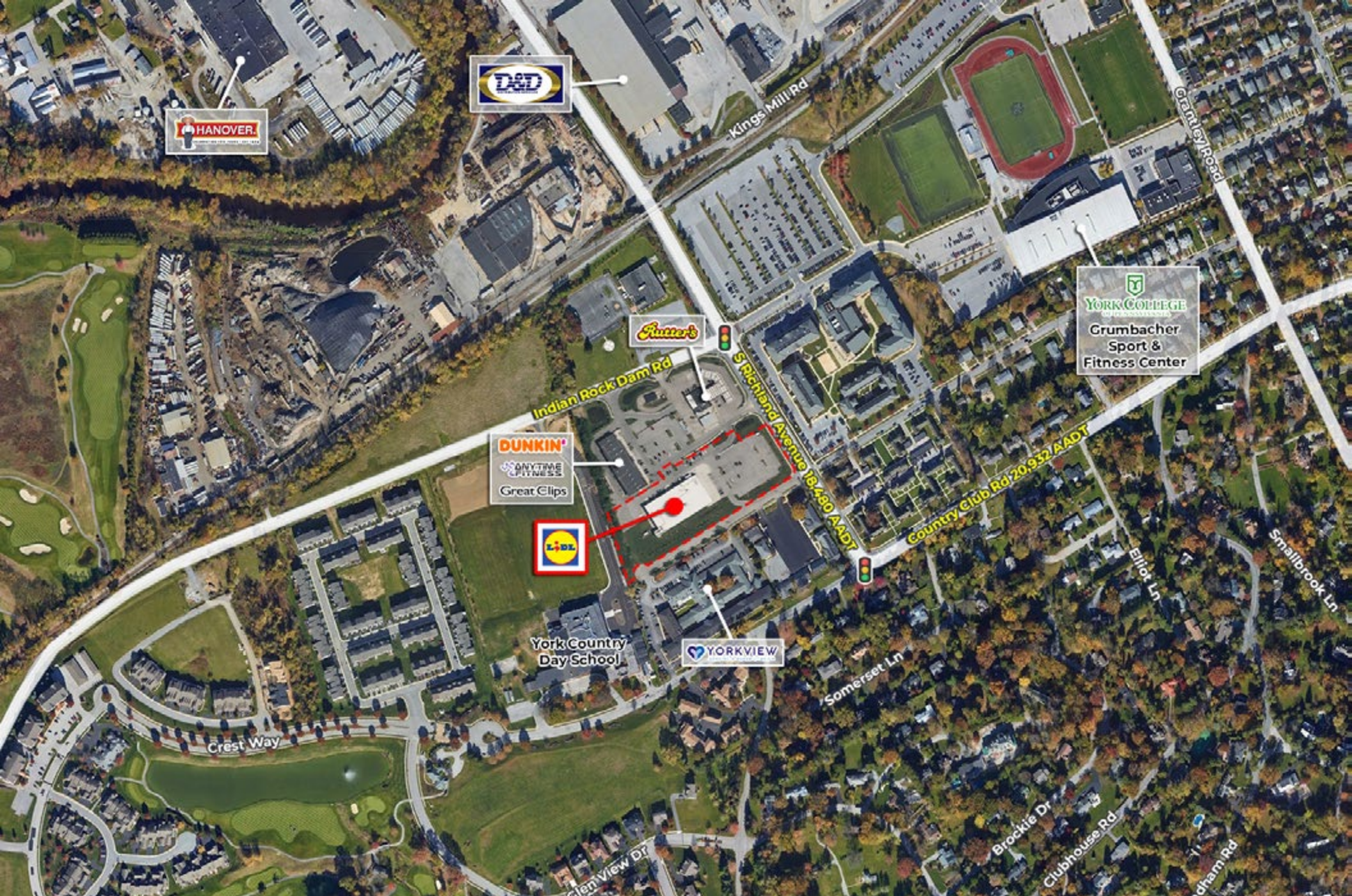
The information and images contained herein are from sources deemed reliable. However, J.C.BAR Properties, Inc. makes no representation whatsoever as to their accuracy or authenticity. Images shown may be modified for illustrative purposes. Images may be out-of-date and not current.



Corporate Office
 224 St. Charles Way, Suite 290
 York, PA 17402

Conshohocken Office
 100 Front Street, Suite 560
 West Conshohocken, PA 19428

Site Plan Fit B

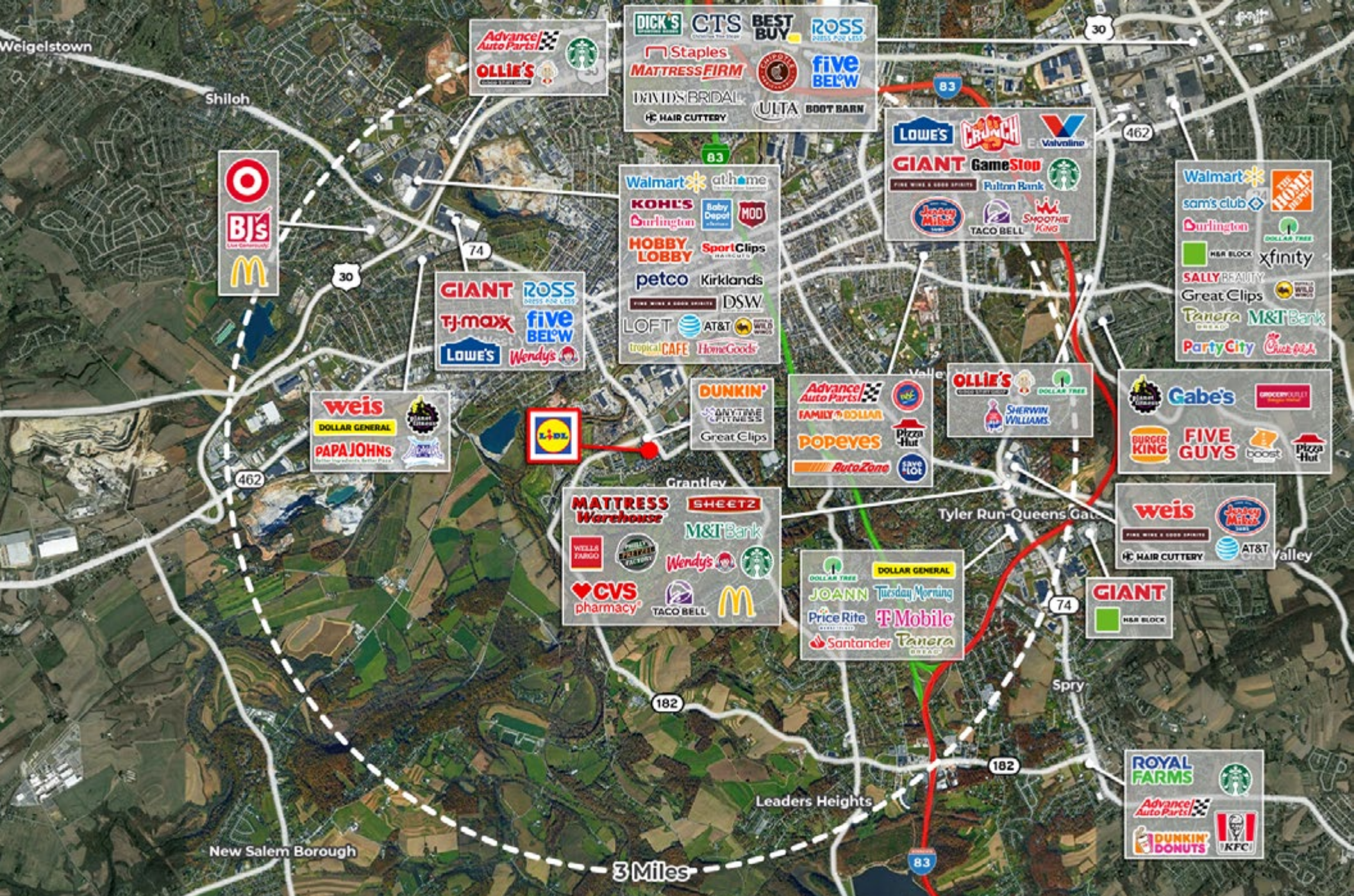


Corporate Office
 224 St. Charles Way, Suite 290
 York, PA 17402

Conshohocken Office
 100 Front Street, Suite 560
 West Conshohocken, PA 19428

Local Aerial

The information and images contained herein are from sources deemed reliable. However, J.C.BAR Properties, Inc. makes no representation whatsoever as to their accuracy or authenticity. Images shown may be modified for illustrative purposes. Images may be out-of-date and not current.



Corporate Office
 224 St. Charles Way, Suite 290
 York, PA 17402

Conshohocken Office
 100 Front Street, Suite 560
 West Conshohocken, PA 19428

Market Aerial

The information and images contained herein are from sources deemed reliable. However, J.C.BAR Properties, Inc. makes no representation whatsoever as to their accuracy or authenticity. Images shown may be modified for illustrative purposes. Images may be out-of-date and not current.