

# 621-623 Maryland Avenue

Wilmington, DE 19805

±2,400 SF Storefront Available



Corporate Office  
224 St. Charles Way, Suite 290  
York, PA 17402  
Conshohocken Office  
100 Front Street, Suite 560  
West Conshohocken, PA 19428

**Questions? Contact Us.**



**Kyle McLaughlin**  
Kyle@jcbarprop.com  
p. 610-206-3791  
c. 215-622-0905

# 621-623 Maryland Avenue

Wilmington, DE 19805

±2,400 SF Storefront Available

## Highlights

- Turn-key restaurant with ongoing renovations
- Great opportunity for a quick service/ take out restaurant
- New planned development across the street - 200+ apartments
- Close proximity to Wilmington's Riverfront area

### JOIN THESE MAJOR LOCAL AREA RETAILERS



thefreshgrocer

IRON HILL  
BREWERY & RESTAURANT

Demographic	1 Mile	3 Miles	5 Miles
Population	32,039	113,293	187,716
Households	12,883	47,411	77,789
Avg HH Income	\$70,963	\$95,995	\$108,652
Daytime Employees	17,005	103,226	166,053

Map data ©2023 Google



Questions? Contact Us.



Corporate Office  
224 St. Charles Way, Suite 290  
York, PA 17402

Conshohocken Office  
100 Front Street, Suite 560  
West Conshohocken, PA 19428

Kyle McLaughlin

Kyle@jcbarprop.com

p. 610-206-3791

c. 215-622-0905



±2,400 SF  
STOREFRONT  
AVAILABLE

S Van Buren St

Beech Street

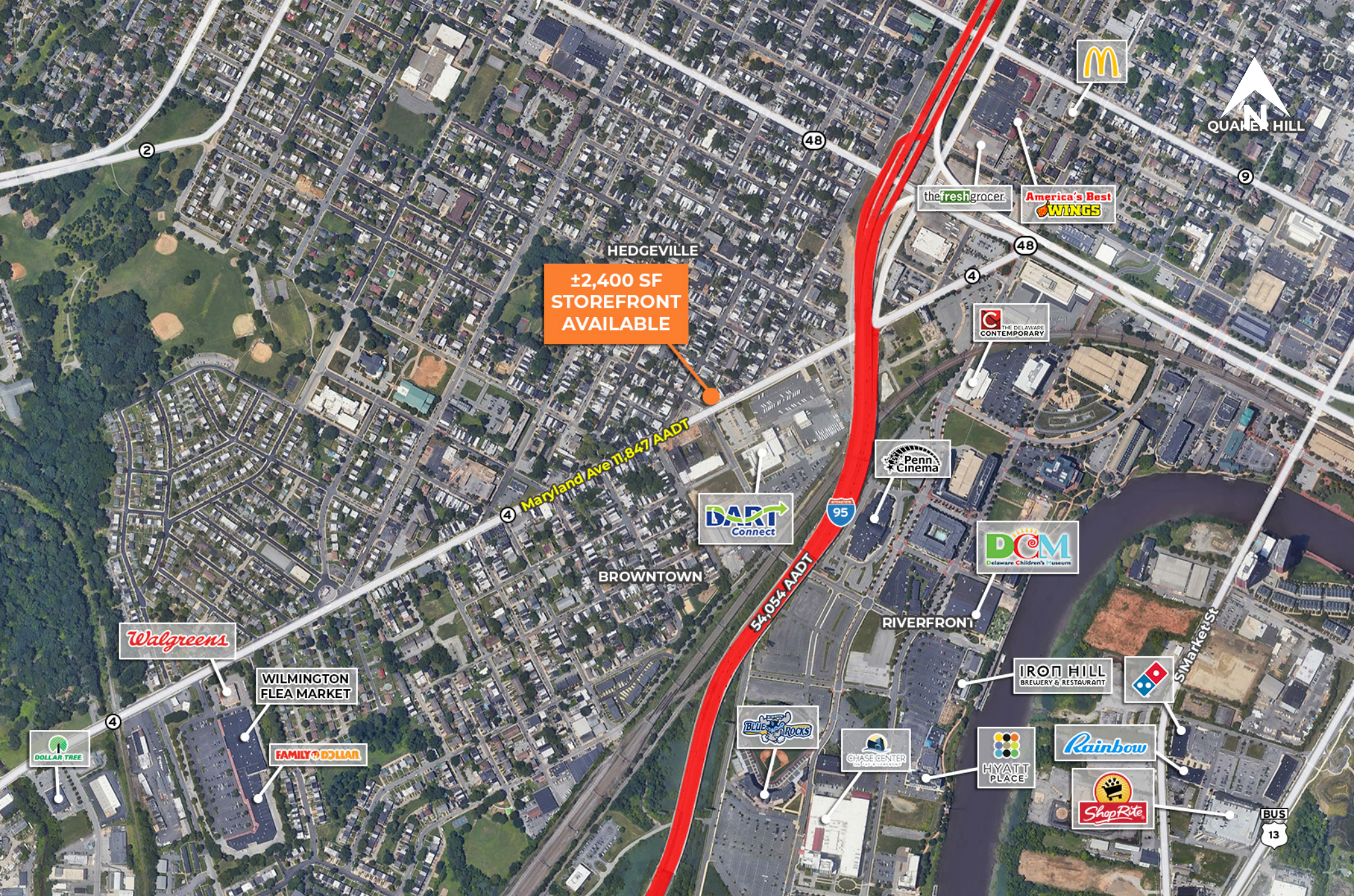
Maryland Avenue 11,847 AADT

4



Corporate Office  
224 St. Charles Way, Suite 290  
York, PA 17402  
Conshohocken Office  
100 Front Street, Suite 560  
West Conshohocken, PA 19428

# Zoom Aerial



Corporate Office  
224 St. Charles Way, Suite 290  
York, PA 17402

Conshohocken Office  
100 Front Street, Suite 560  
West Conshohocken, PA 19428

# Local Aerial

The information and images contained herein are from sources deemed reliable. However, J.C.BAR Properties, Inc. makes no representation whatsoever as to their accuracy or authenticity. Images shown may be modified for illustrative purposes. Images may be out-of-date and not current.



Corporate Office  
 224 St. Charles Way, Suite 290  
 York, PA 17402

Conshohocken Office  
 100 Front Street, Suite 560  
 West Conshohocken, PA 19428

# Market Aerial

The information and images contained herein are from sources deemed reliable. However, J.C.BAR Properties, Inc. makes no representation whatsoever as to their accuracy or authenticity. Images shown may be modified for illustrative purposes. Images may be out-of-date and not current.