

610 Woodbury Glassboro Rd

NOW ON THE MARKET!

Mantua, NJ 08080

±4.80 AC Land for Sale



LAND FOR SALE

Questions? Contact Us.

Greg Jones

GJones@jcbarprop.com

p. 610-234-6491

c. 484-948-5217

610 Woodbury Glassboro Rd

NOW ON THE MARKET!

Mantua, NJ 08080

±4.80 AC Land for Sale

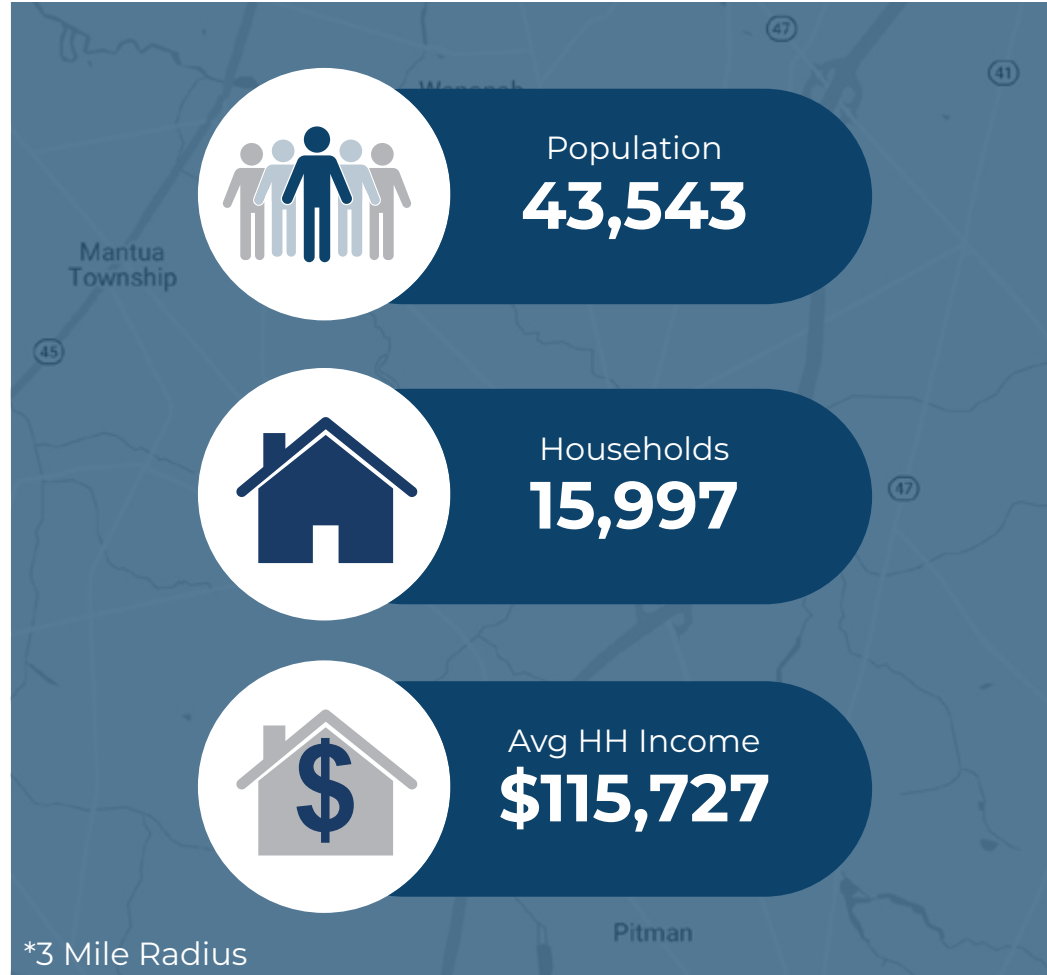
Highlights

- Lowe's and Target across the street
- Prominent visibility on Woodbury-Glassboro Rd with 21,521 VPD
- Zoning: CC (Community Commercial)
- Right-in, right-out from Woodbury-Glassboro Rd
- Area Retailers:



Demographic	1 Mile	3 Miles	5 Miles
Population	4,256	43,543	139,012
Households	1,437	15,997	50,538
Avg HH Income	\$131,881	\$115,727	\$105,862

Traffic Count Glassboro Rd: 21,521 ADT



Questions? Contact Us.

Greg Jones

GJones@jcbarprop.com

p. 610-234-6491

c. 484-948-5217

610 Woodbury Glassboro Rd

NOW ON THE MARKET!

Mantua, NJ 08080

±4.80 AC Land for Sale

About Mantua

Mantua Township, which has a total area of approximately 15 square miles, is located in the middle of Gloucester County. The Township borders Greenwich and West Deptford Townships to the north; the Borough of Wenonah, Deptford and Washington Townships to the east; the Borough of Pitman and part of Glassboro Borough to the south; Harrison Township to the southwest and East Greenwich Township to the west. Mantua Township has a population of 15,217 according to 2017 census and Gloucester County has a population of 288,288 according to 2017 census. In Mantua, the Median Household Income is \$69,990 and in Gloucester County the Median House Value is \$220,400.

Zoning

Permitted Uses:

- Retail
- Office
- Eating or Drinking
- Personal Services
- Banking
- Garden Center



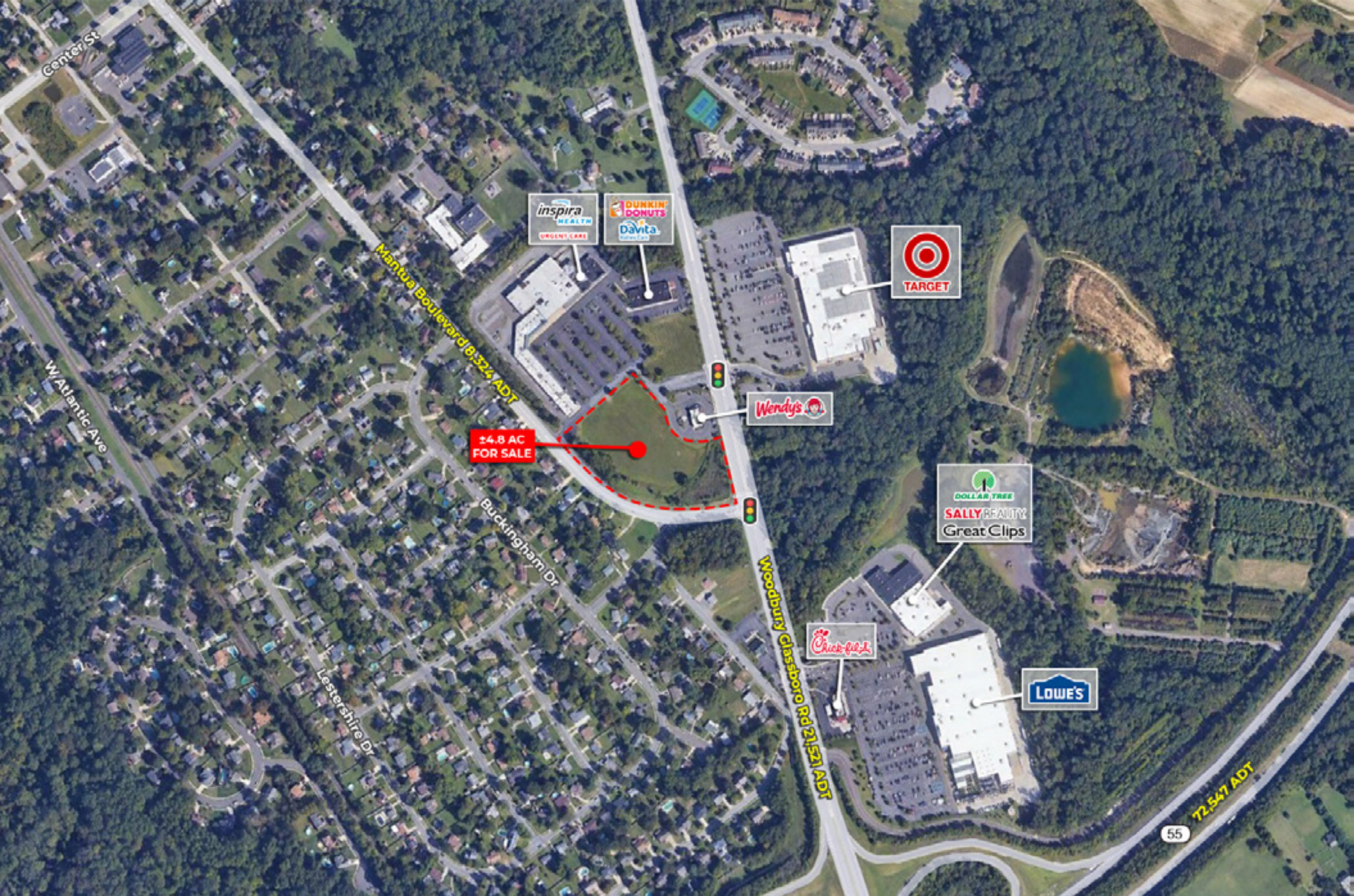
Questions? Contact Us.

Greg Jones

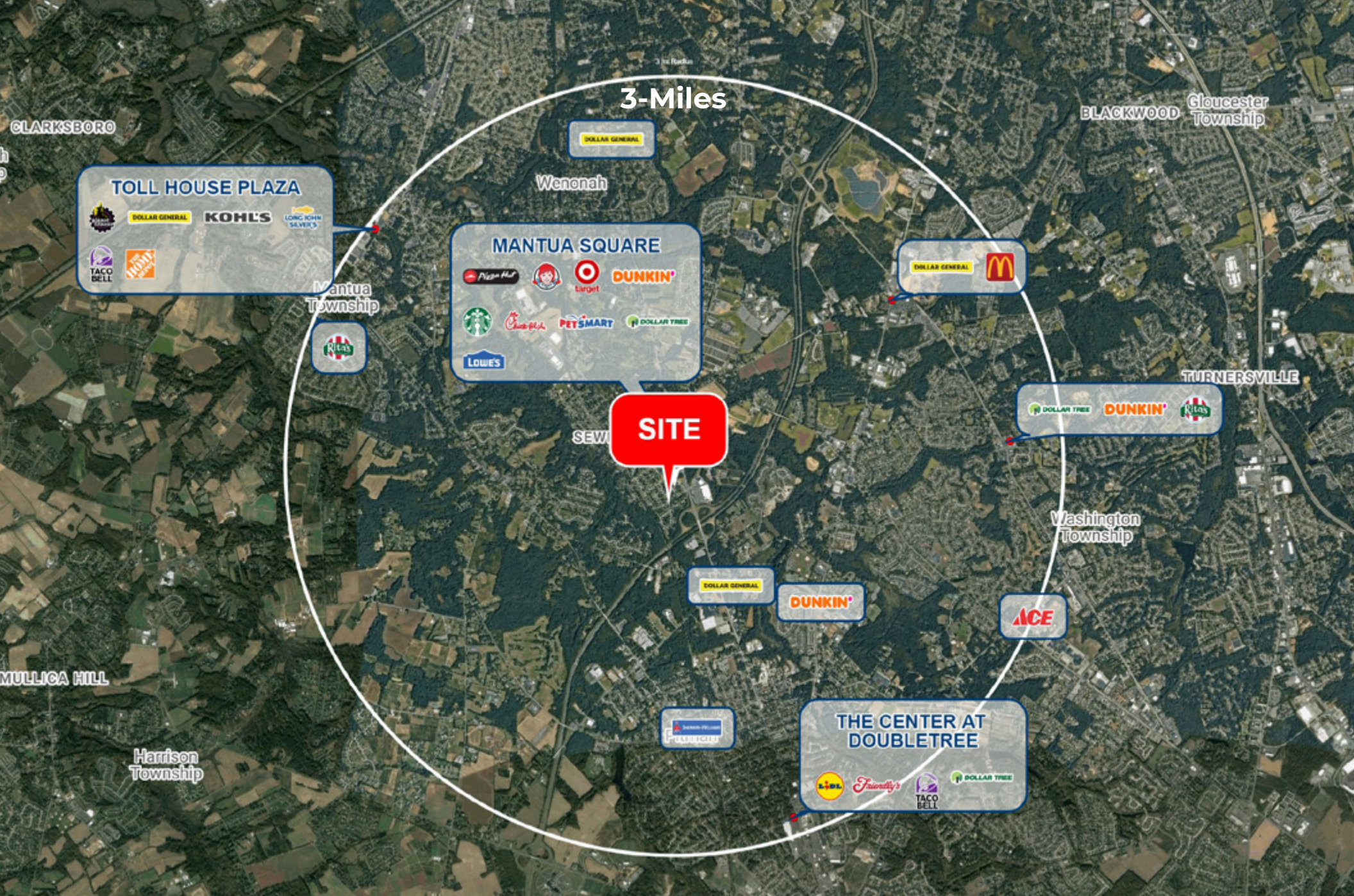
GJones@jcbarprop.com

p. 610-234-6491

c. 484-948-5217



Local Aerial



Market Aerial