

400 N Delsea Drive

Vineland, NJ 08360

±2.00 AC Development Opportunity Available



Corporate Office
224 St. Charles Way, Suite 290
York, PA 17402

Conshohocken Office
100 Front Street, Suite 560
West Conshohocken, PA 19428

Questions? Contact Us.



Steven Kim
Skim@jcbarprop.com
c. 215-990-4250

400 N Delsea Drive

Vineland, NJ 08360

±2.00 AC Development Opportunity Available

Highlights

- ±2.00 acres directly on Delsea Drive
- On the corner of a signalized intersection
- Prime location situated in a highly visible and high traffic area
- Ideal uses include car wash, bank, and QSR with drive thru
- Property also includes rear drive access

JOIN THESE MAJOR LOCAL AREA RETAILERS



Demographic	1 Mile	3 Miles	5 Miles
Population	6,190	39,474	64,533
Households	2,295	14,113	23,708
Avg HH Income	\$80,533	\$89,279	\$100,670
Daytime Employees	4,561	19,803	30,368

Map data ©2023 Google



Questions? Contact Us.



Corporate Office
224 St. Charles Way, Suite 290
York, PA 17402

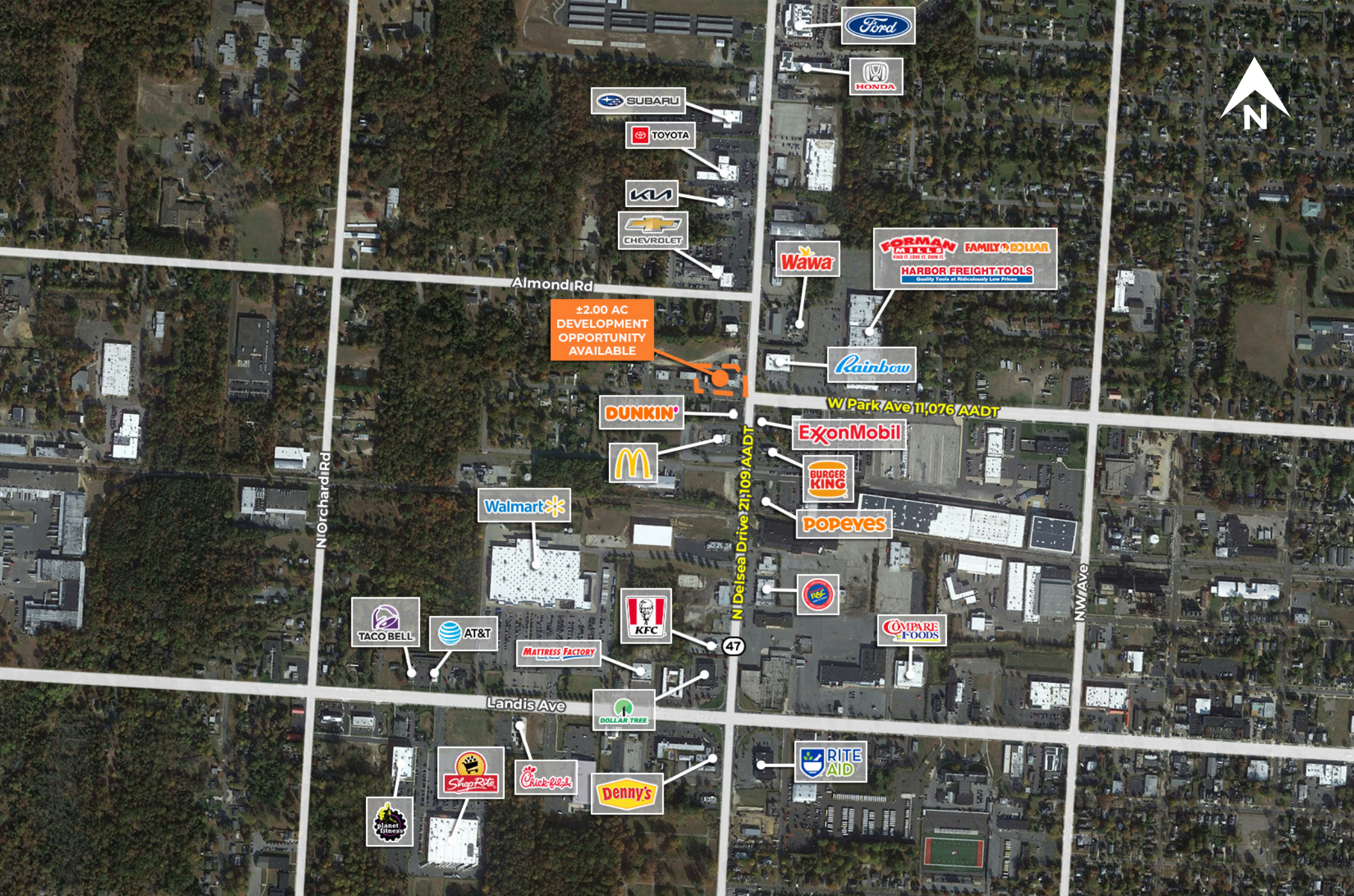
Conshohocken Office
100 Front Street, Suite 560
West Conshohocken, PA 19428

Steven Kim
Skim@jcbareprop.com
c. 215-990-4250



Corporate Office
224 St. Charles Way, Suite 290
York, PA 17402
Conshohocken Office
100 Front Street, Suite 560
West Conshohocken, PA 19428

Zoom Aerial



±2.00 AC
DEVELOPMENT
OPPORTUNITY
AVAILABLE

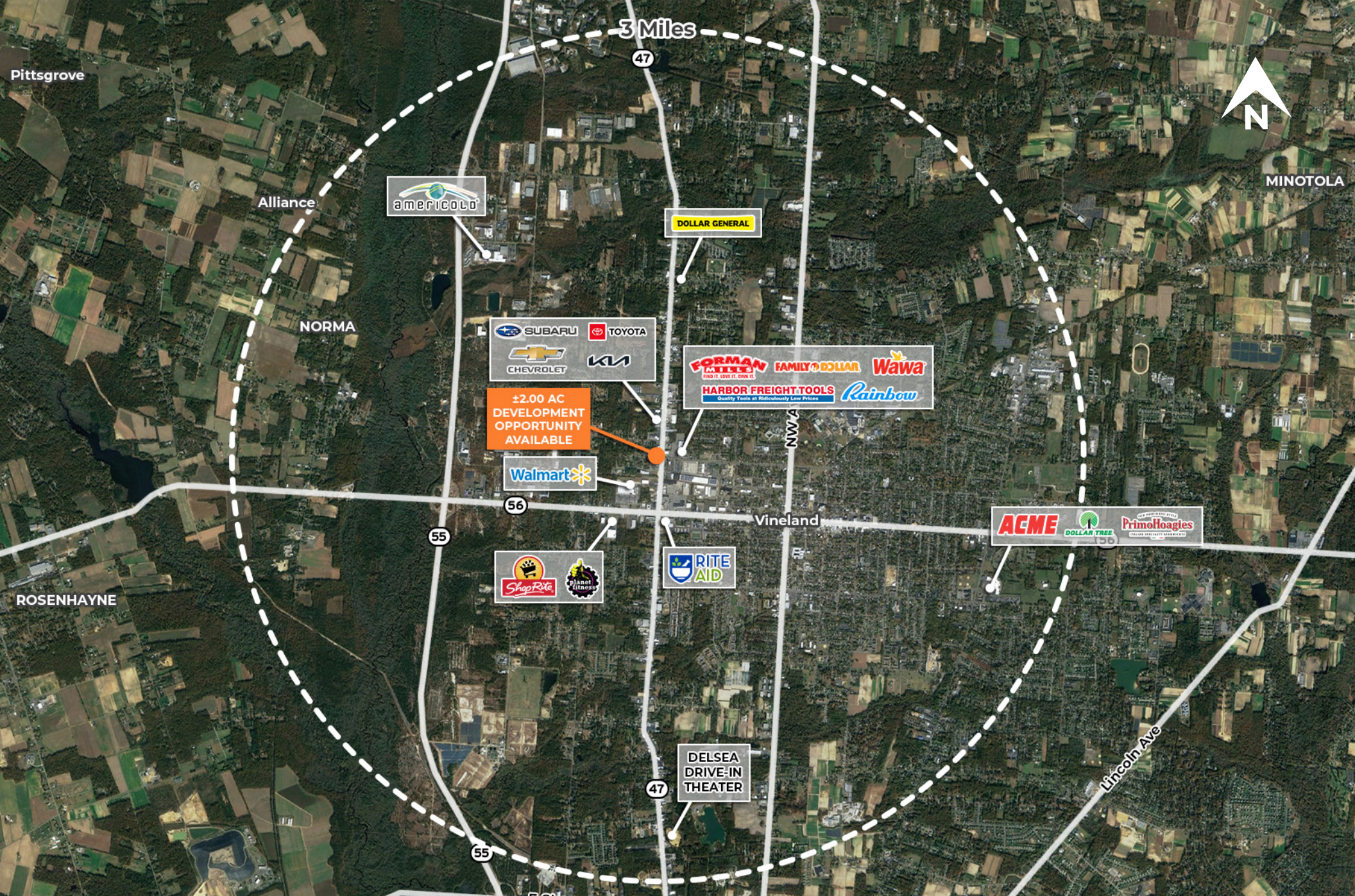


Corporate Office
224 St. Charles Way, Suite 290
York, PA 17402

Conshohocken Office
100 Front Street, Suite 560
West Conshohocken, PA 19428

Local Aerial

The information and images contained herein are from sources deemed reliable. However, J.C.BAR Properties, Inc. makes no representation whatsoever as to their accuracy or authenticity. Images shown may be modified for illustrative purposes. Images may be out-of-date and not current.



Corporate Office
 224 St. Charles Way, Suite 290
 York, PA 17402

Conshohocken Office
 100 Front Street, Suite 560
 West Conshohocken, PA 19428

Market Aerial