

400 Kaighns Avenue

Cherry Hill, NJ 08002

Outparcel for Sale or Lease

NOW ON THE MARKET!



Questions? Contact Us.

Greg Jones

GJones@jcbarprop.com

p. 610-234-6491

c. 484-948-5217

400 Kaighns Avenue

Cherry Hill, NJ 08002

Outparcel for Sale or Lease

NOW ON THE MARKET!

Highlights

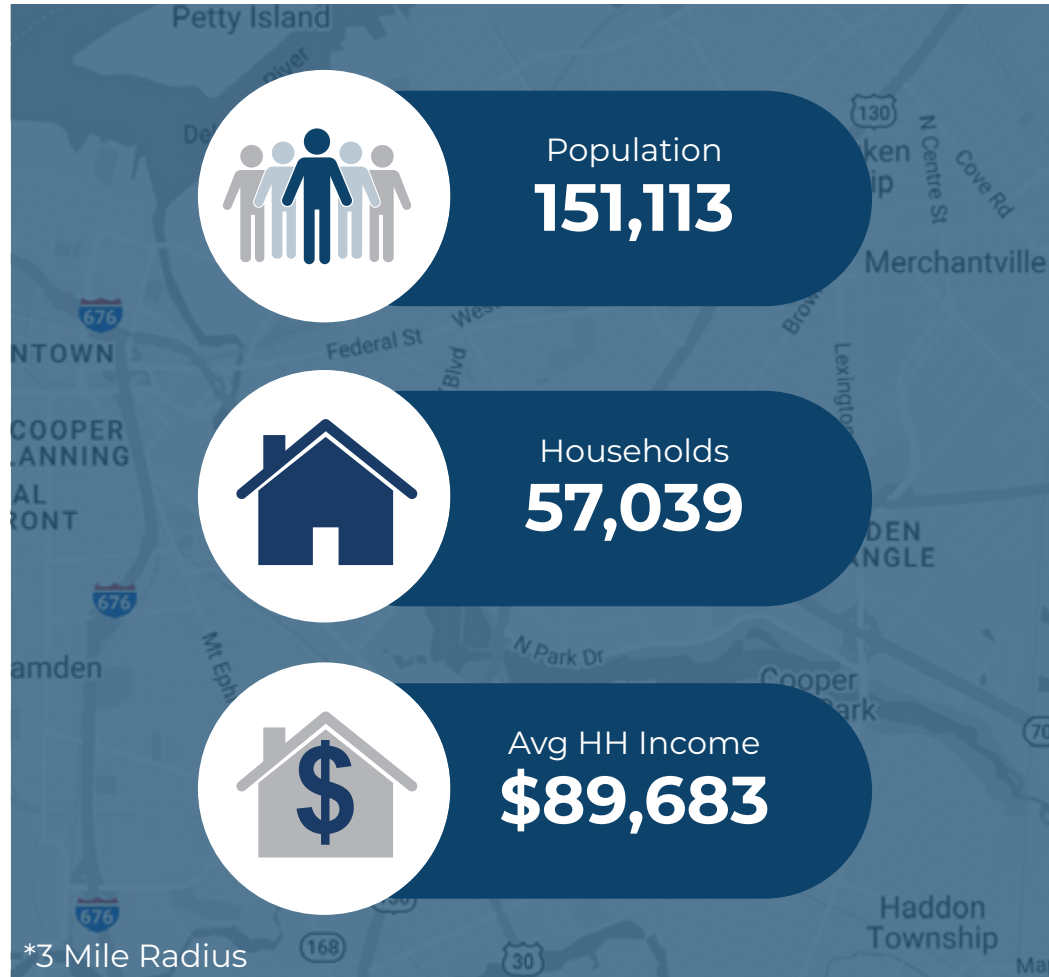
- Shared access to Lidl and adjacent Walmart power center (Cherry Hill Commons)
- Access from Route 38 and Cuthbert Boulevard
- Route 38 boasts 47,714 Automobiles Daily Traveled
- Development opportunity; well-situated in the heart of regional Cherry Hill market
- Potential shared signage opportunity
- High daytime population in the Golden Triangle with Lidl

JOIN



Demographic	1 Mile	3 Miles	5 Miles
Population	10,523	151,113	333,913
Households	4,054	57,039	129,466
Avg HH Income	\$91,581	\$89,683	\$91,971

Traffic Count Kaighns Avenue (Route 38): 47,714 ADT



Questions? Contact Us.

Greg Jones

GJones@jcbarprop.com

p. 610-234-6491

c. 484-948-5217

400 Kaighns Avenue

Cherry Hill, NJ 08002

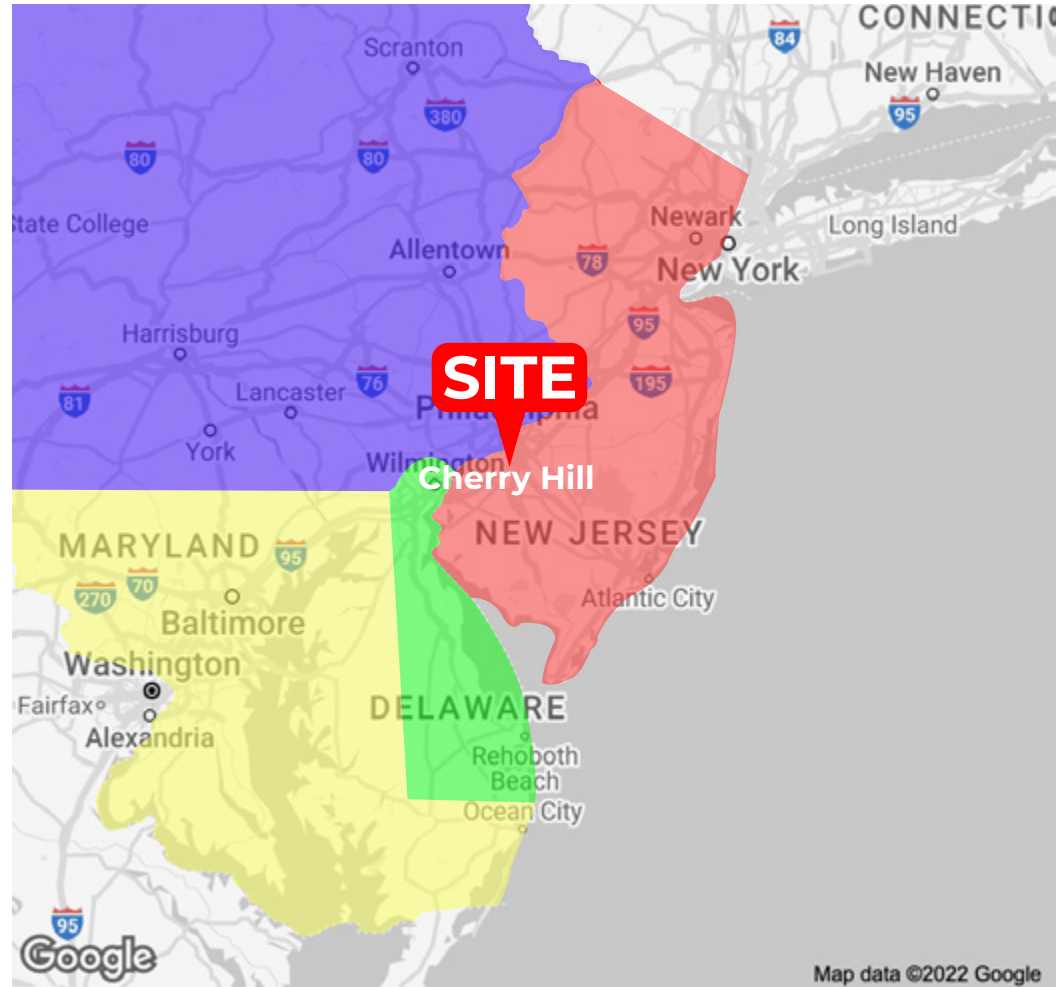
Outparcel for Sale or Lease

About Cherry Hill

Cherry Hill is a township within Camden County, in the U.S. state of New Jersey and is a suburb of Philadelphia and is part of the Delaware Valley metropolitan statistical area. With the decline of downtown Camden, it has become an edge city and one of the region's main commercial centers. Cherry Hill is part of the Delaware Valley metropolitan statistical area, which also includes Philadelphia, Camden, and other urban areas.

Cherry Hill is a corporate and employment hub. The township is the headquarters of TD Bank, N.A., whose \$350 billion in deposits in 2021 made it the eighth-largest U.S. bank by deposits. Melitta USA has its coffee roasting plant in the township. The Courier-Post, the fifth-largest New Jersey-based newspaper, is published in Cherry Hill. Subaru of America's headquarters was also located in the township until 2018. Cherry Hill Mall, a principal shopping center in the Philadelphia metropolitan area, was the first enclosed shopping mall in the eastern United States, opening in October 1961.

NOW ON THE MARKET!



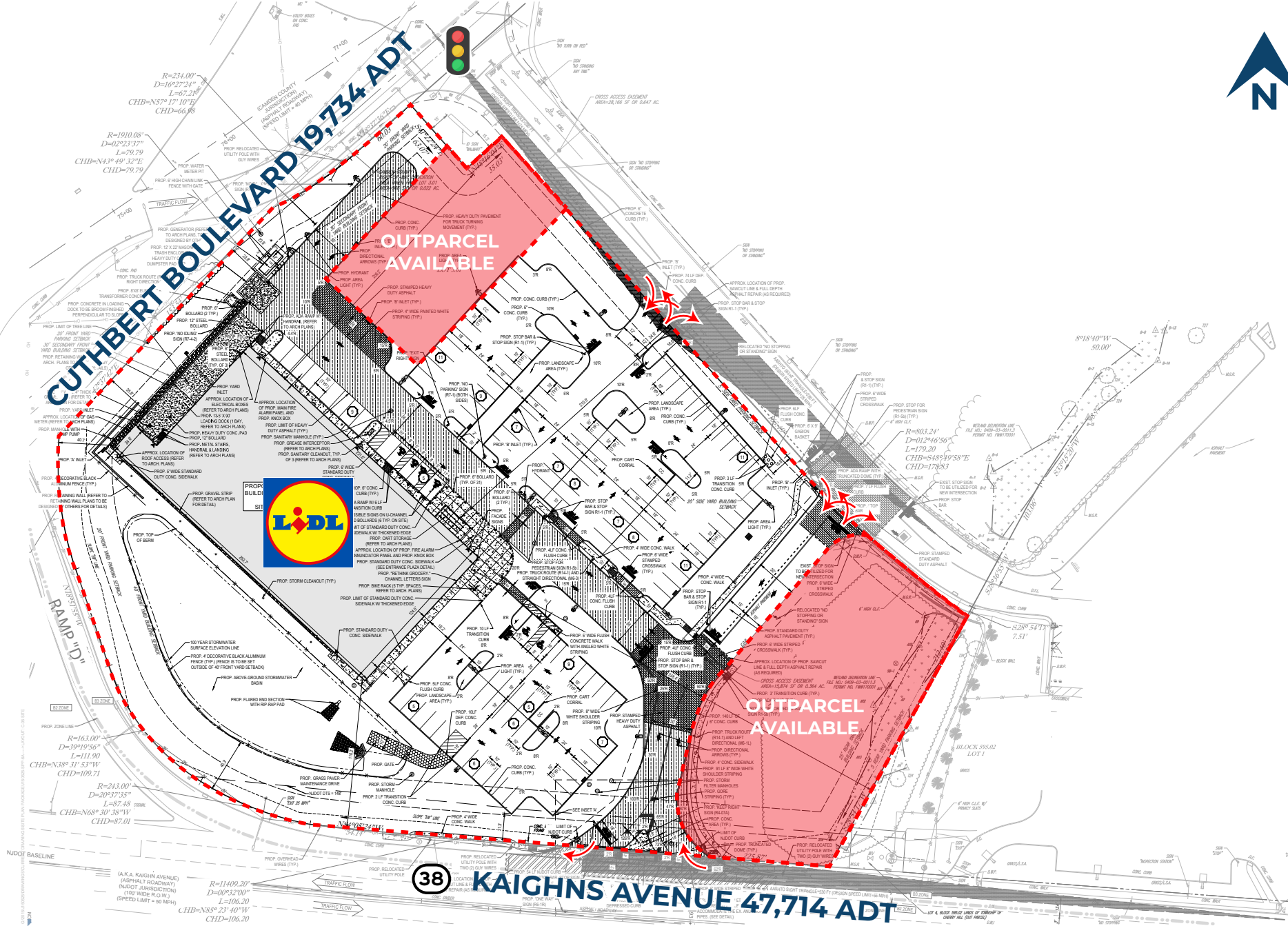
Questions? Contact Us.

Greg Jones

GJones@jcbarprop.com

p. 610-234-6491

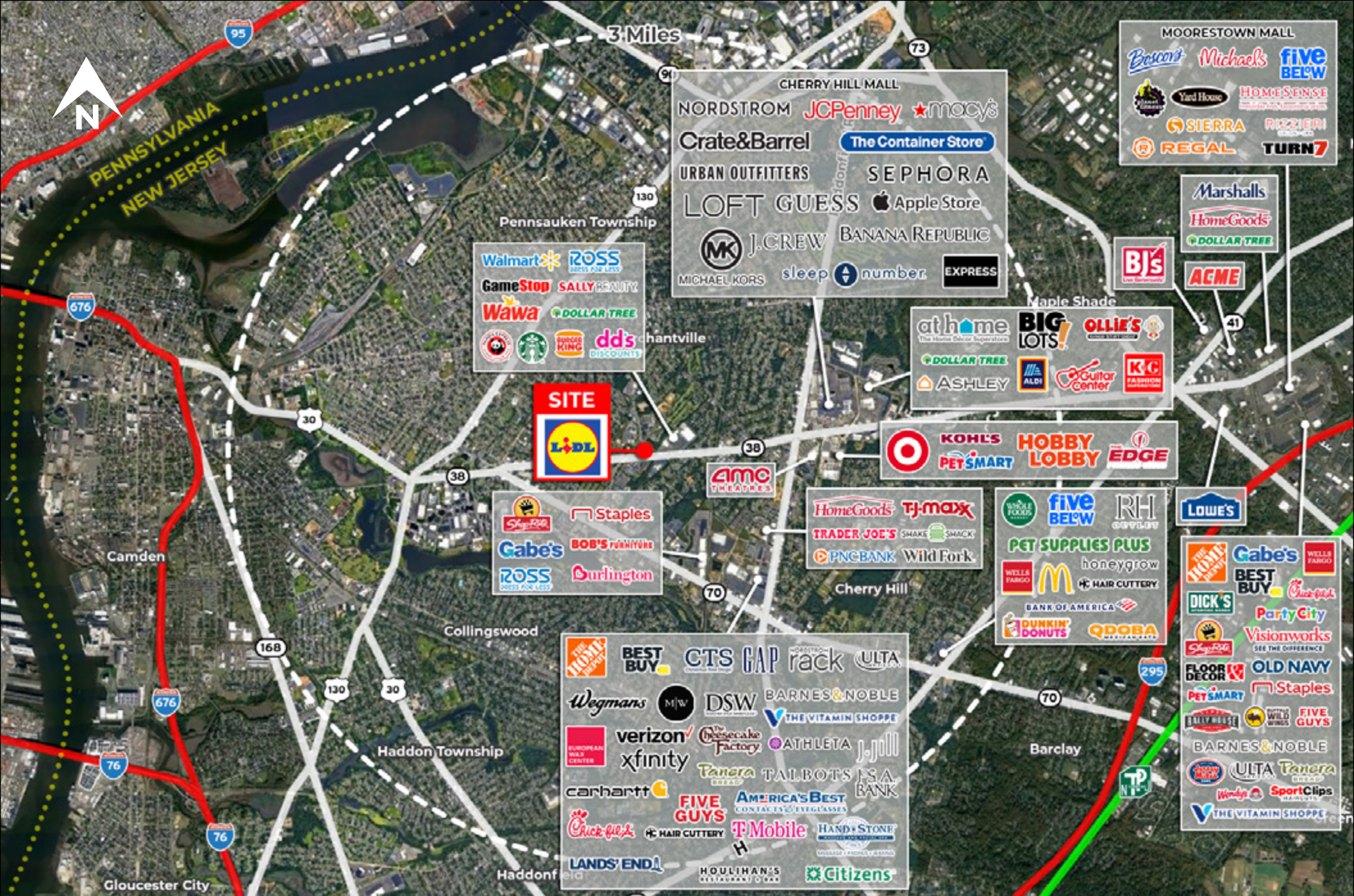
c. 484-948-5217



Site Plan



Local Aerial



Market Aerial