

3121 Fire Road

Egg Harbor, NJ 08234

±19,222 SF Sublease Available

NOW ON THE MARKET!



Corporate Office
224 St. Charles Way, Suite 290
York, PA 17402
Conshohocken Office
100 Front Street, Suite 560
West Conshohocken, PA 19428

Questions? Contact Us.



Greg Jones
GJones@jcbarprop.com
p. 610-234-6491
c. 484-948-5217

3121 Fire Road

Egg Harbor, NJ 08234

±19,222 SF Sublease Available

Highlights

- Join New LIDL Grocery Store
- An abundance of shared parking
- Loading docks for tractor trailer deliveries
- Regional accessibility located directly off of the Garden State Parkway (47,800 AADT)

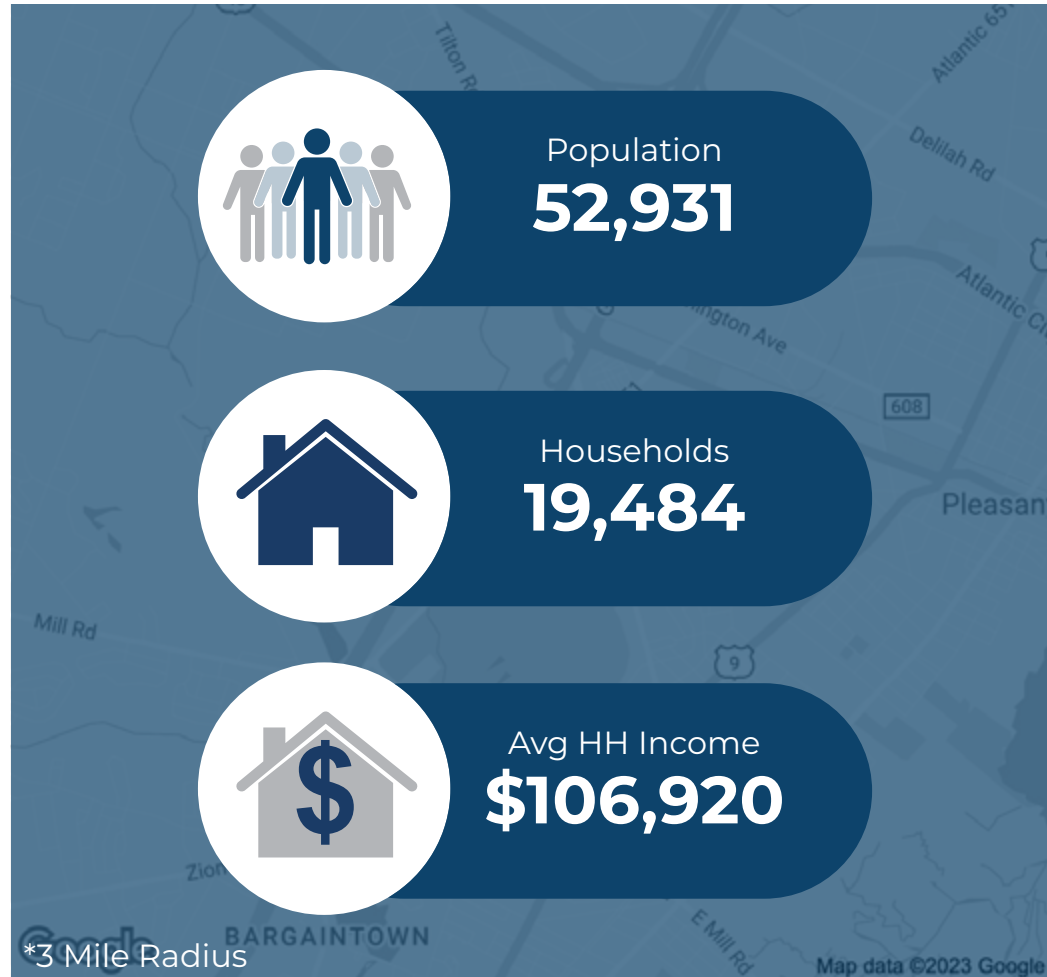
JOIN



Demographic	1 Mile	3 Miles	5 Miles
Population	4,481	52,931	98,508
Households	2,058	19,484	36,741
Avg HH Income	\$71,338	\$106,920	\$117,158

Traffic Count Fire Road (Atlantic 651) 22,161 AADT

NOW ON THE MARKET!



Questions? Contact Us.



Corporate Office
224 St. Charles Way, Suite 290
York, PA 17402

Conshohocken Office
100 Front Street, Suite 560
West Conshohocken, PA 19428

Greg Jones

GJones@jcbarprop.com

p. 610-234-6491

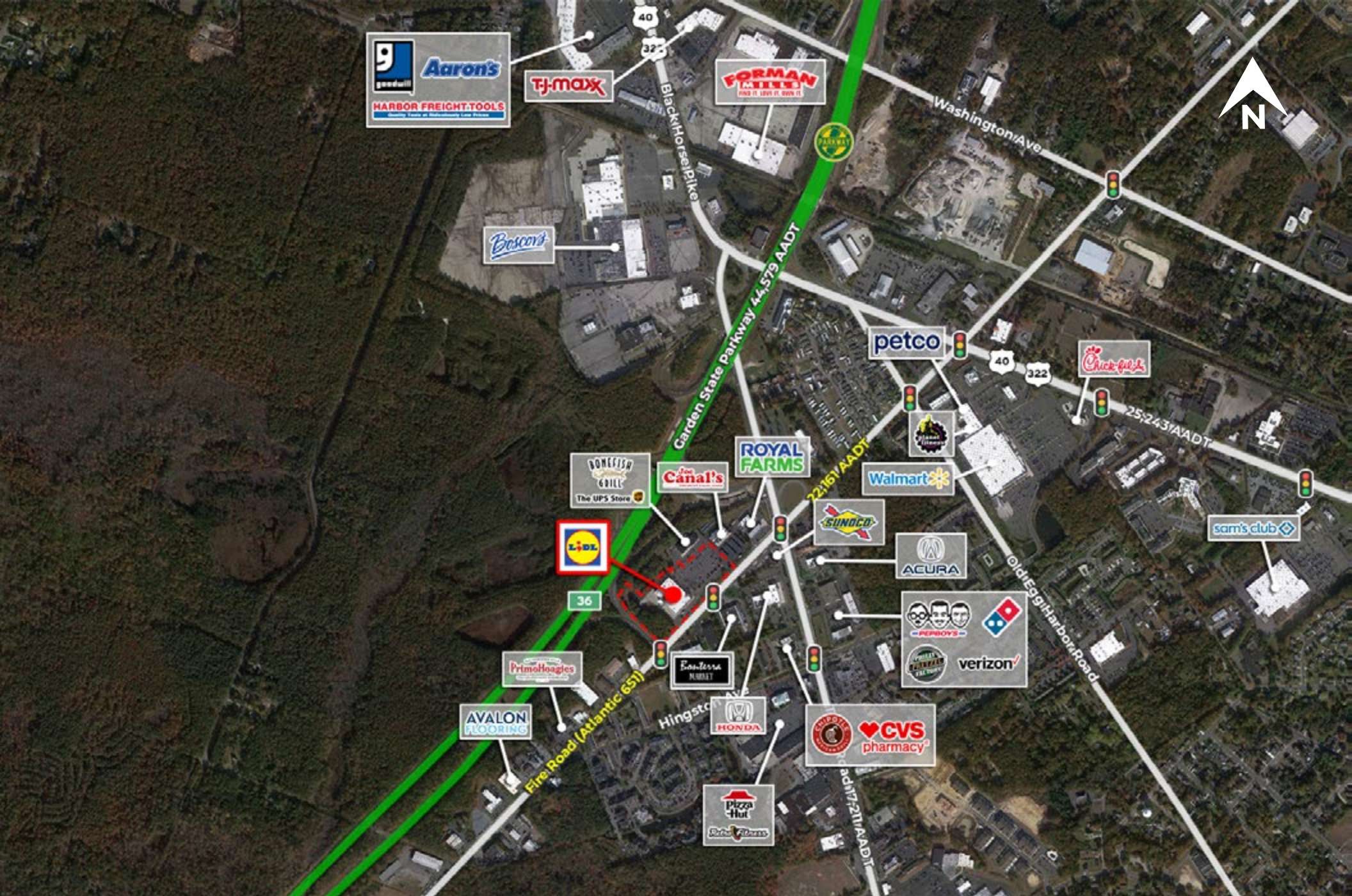
c. 484-948-5217



Corporate Office
 224 St. Charles Way, Suite 290
 York, PA 17402

Conshohocken Office
 100 Front Street, Suite 560
 West Conshohocken, PA 19428

Site Plan

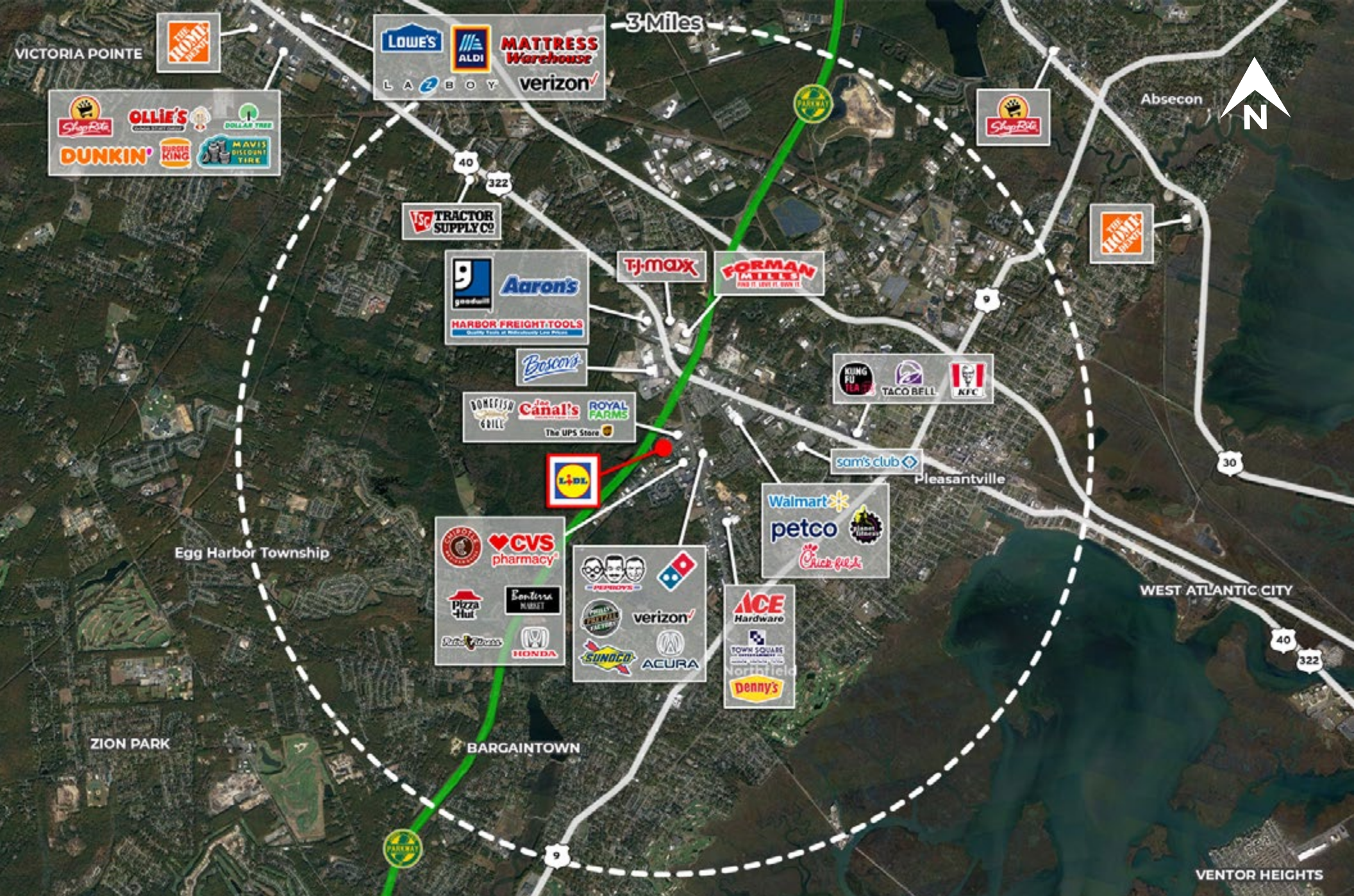


Corporate Office
 224 St. Charles Way, Suite 290
 York, PA 17402

Conshohocken Office
 100 Front Street, Suite 560
 West Conshohocken, PA 19428

Local Aerial

The information and images contained herein are from sources deemed reliable. However, J.C.BAR Properties, Inc. makes no representation whatsoever as to their accuracy or authenticity. Images shown may be modified for illustrative purposes. Images may be out-of-date and not current.



Corporate Office
 224 St. Charles Way, Suite 290
 York, PA 17402

Conshohocken Office
 100 Front Street, Suite 560
 West Conshohocken, PA 19428

Market Aerial