

Former Restaurant Available!

240 Nutt Road, Phoenixville, PA 19460

±1,528 SF on ±0.21 AC Available For Sale or Lease



Questions? Contact Us.

Greg Jones

GJones@jcbarprop.com

p. 610-234-6491

c. 484-948-5217

Former Restuarant Available!

240 Nutt Road, Phoenixville, PA 19460

±1,528 SF on ±0.21 AC Available For Sale or Lease

Highlights

- 2nd Generation Restaurant with Fixtures, Furniture & Equipment
- Corner Lot With High Visibility from Signalized Intersection
- Close Proximity to Tower Health Phoenixville Hospital with 144 Beds
- Existing Large Pylon Signage
- 10 Parking Spaces

JOIN THESE MAJOR LOCAL AREA RETAILERS



| Demographic | 1 Mile | 3 Miles | 5 Miles |
|-------------------|-----------|-----------|-----------|
| Population | 16,401 | 46,414 | 99,131 |
| Households | 7,523 | 19,300 | 39,851 |
| Avg HH Income | \$116,113 | \$169,646 | \$176,028 |
| Daytime Employees | 5,772 | 13,880 | 56,402 |



Questions? Contact Us.

Greg Jones

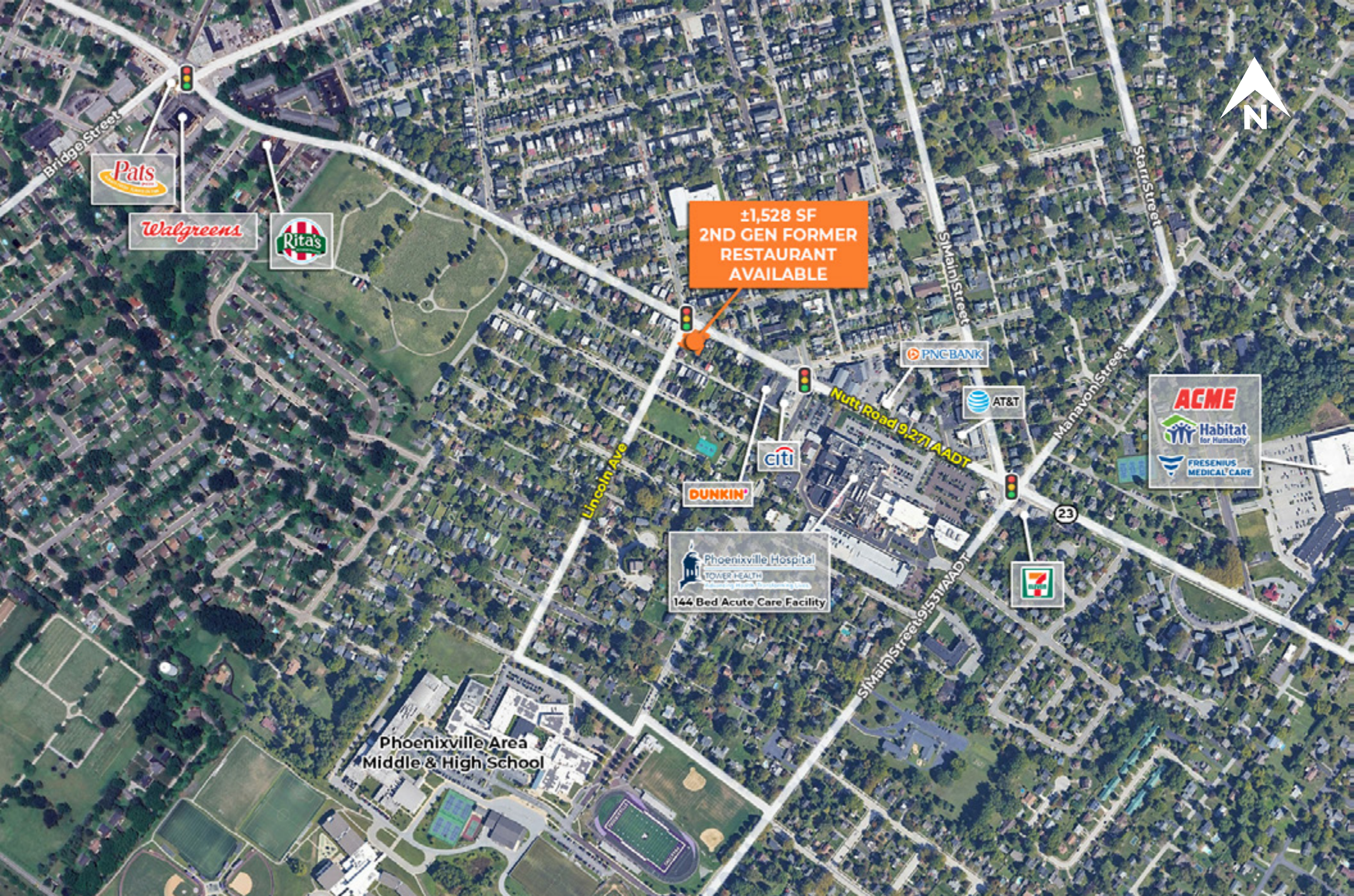
GJones@jcbarprop.com

p. 610-234-6491

c. 484-948-5217



Zoom Aerial



Zoom Aerial