

237 Mitchell Street

Millsboro, DE 19966

Up to ±4.70 Acres Available



Corporate Office
224 St. Charles Way, Suite 290
York, PA 17402

Conshohocken Office
100 Front Street, Suite 560
West Conshohocken, PA 19428

Questions? Contact Us.



Kyle McLaughlin

Kyle@jcbarprop.com

p. 610-234-6491

c. 215-622-0905

237 Mitchell Street

Millsboro, DE 19966

Up to ±4.70 Acres Available

Highlights

- Ground lease or build-to-suit on ±1.00 acres and ±3.70 acres
- Situated near busy Dupont Highway (Route 113) with 30,315 AADT and next to the world famous Lewes Dairy
- Located in Millsboro, the fastest growing city in Sussex County

JOIN THESE MAJOR LOCAL AREA RETAILERS



Demographic	1 Mile	3 Miles	5 Miles
Population	5,251	13,048	23,385
Households	2,180	5,242	9,375
Avg HH Income	\$67,682	\$80,510	\$87,883
Daytime Employees	2,894	3,949	5,173



Corporate Office
224 St. Charles Way, Suite 290
York, PA 17402

Conshohocken Office
100 Front Street, Suite 560
West Conshohocken, PA 19428



Questions? Contact Us.



Kyle McLaughlin

Kyle@jcbarprop.com

p. 610-234-6491

c. 215-622-0905



Millsboro
LANES



±1.00 AC
AVAILABLE

±3.70 AC
AVAILABLE

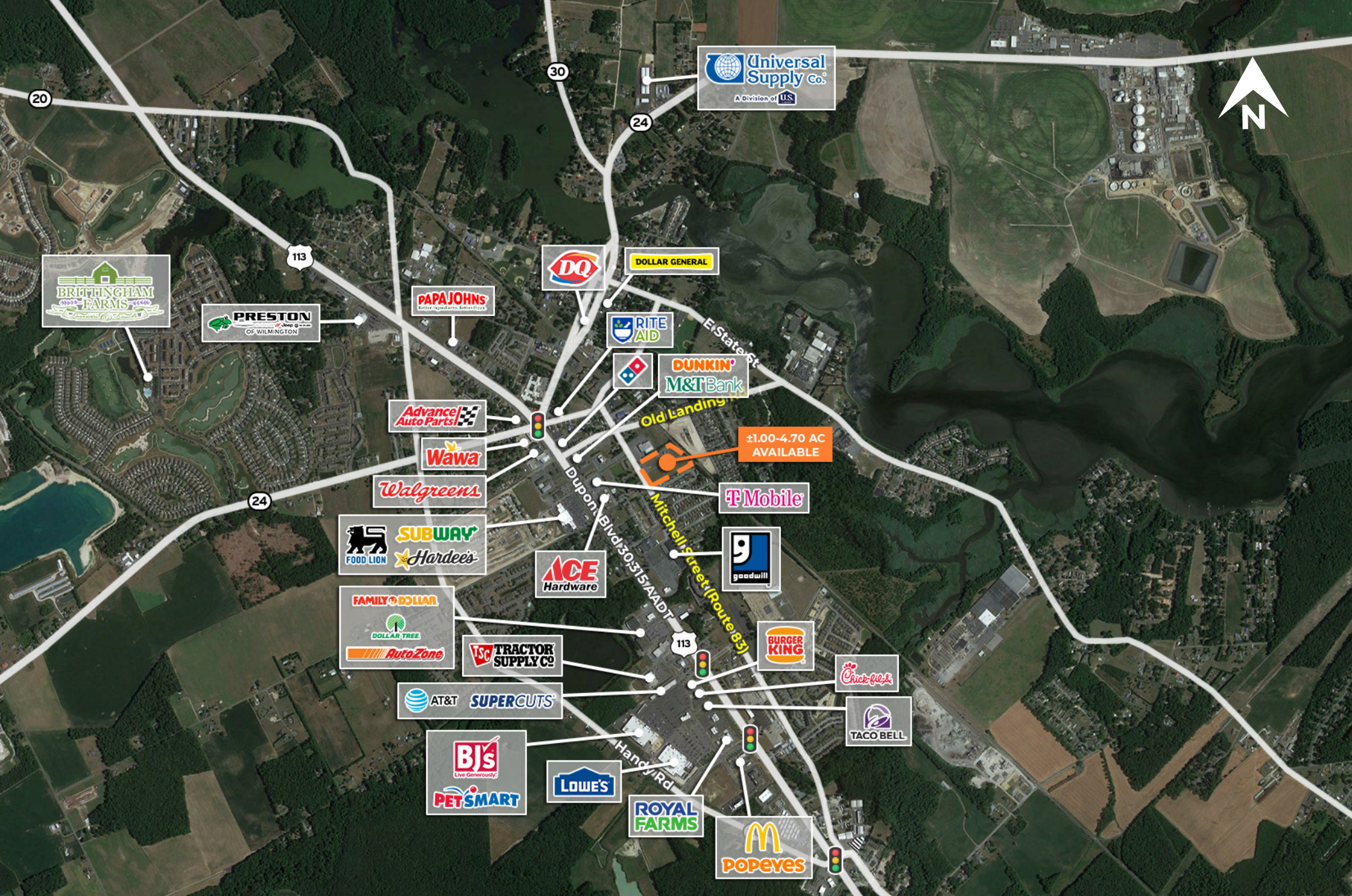
Mitchell Street (Route 83)



Corporate Office
224 St. Charles Way, Suite 290
York, PA 17402
Conshohocken Office
100 Front Street, Suite 560
West Conshohocken, PA 19428

Zoom Aerial

The information and images contained herein are from sources deemed reliable. However, J.C.BAR Properties, Inc. makes no representation whatsoever as to their accuracy or authenticity. Images shown may be modified for illustrative purposes. Images may be out-of-date and not current.

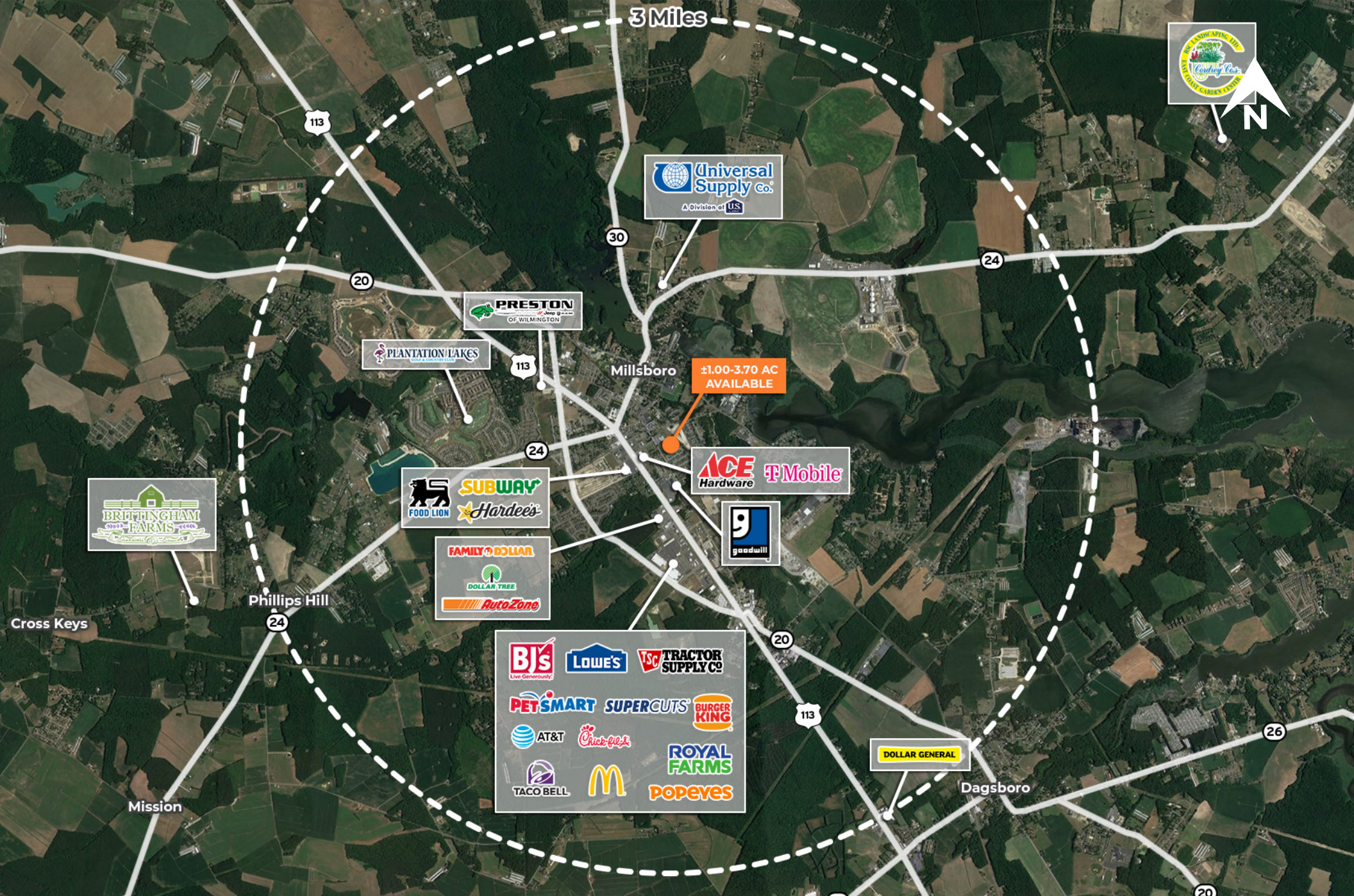


Corporate Office
 224 St. Charles Way, Suite 290
 York, PA 17402

Conshohocken Office
 100 Front Street, Suite 560
 West Conshohocken, PA 19428

Local Aerial

The information and images contained herein are from sources deemed reliable. However, J.C.BAR Properties, Inc. makes no representation whatsoever as to their accuracy or authenticity. Images shown may be modified for illustrative purposes. Images may be out-of-date and not current.



Corporate Office
 224 St. Charles Way, Suite 290
 York, PA 17402

Conshohocken Office
 100 Front Street, Suite 560
 West Conshohocken, PA 19428

Market Aerial

The information and images contained herein are from sources deemed reliable. However, J.C.BAR Properties, Inc. makes no representation whatsoever as to their accuracy or authenticity. Images shown may be modified for illustrative purposes. Images may be out-of-date and not current.