

202 Marketplace

411 Doylestown Road - Montgomeryville, PA 18936

±2,000-9,400 SF Available for Lease



Corporate Office
224 St. Charles Way, Suite 290
York, PA 17402
Conshohocken Office
100 Front Street, Suite 560
West Conshohocken, PA 19428

Questions? Contact Us.



Greg Jones
GJones@jcbarprop.com
p. 610-234-6491
c. 484-948-5217

202 Marketplace

411 Doylestown Road - Montgomeryville, PA 18936

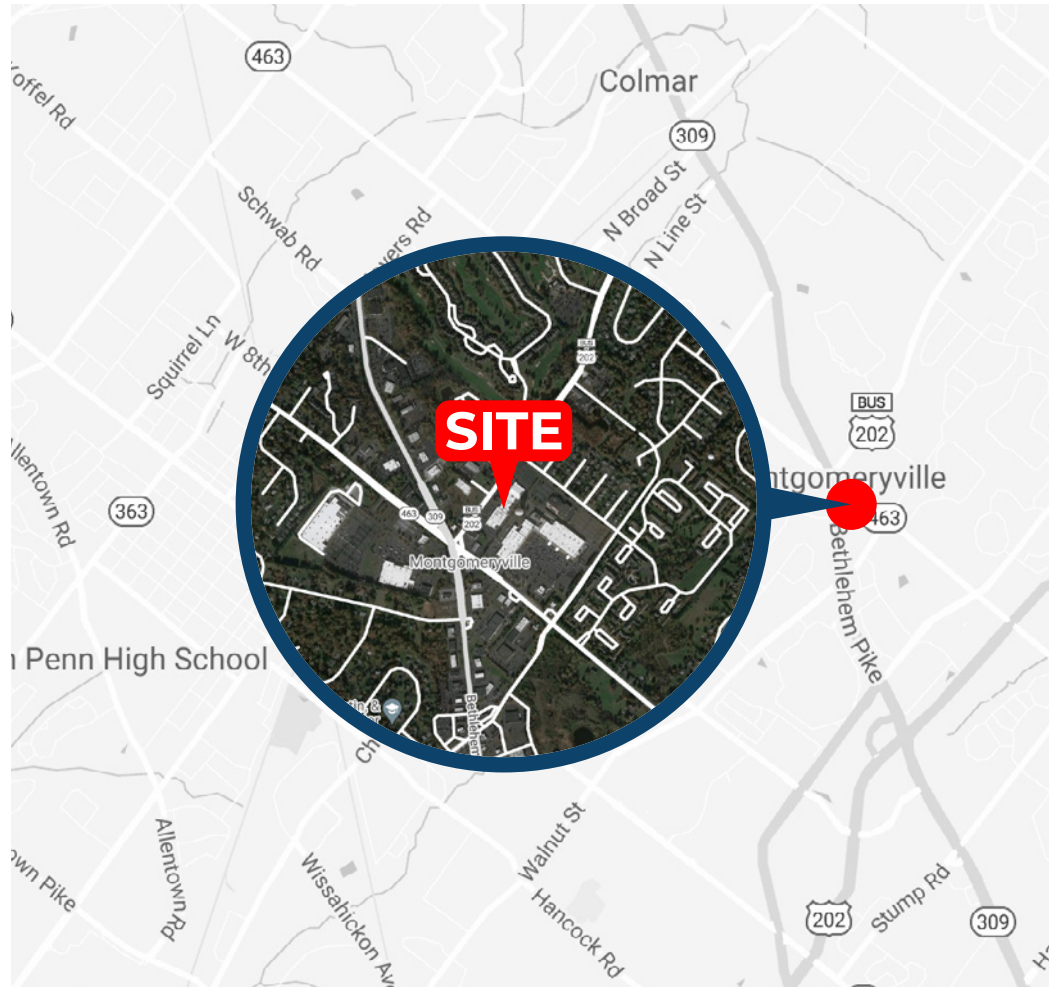
±2,000-9,400 SF Available for Lease

Highlights

- Spaces for lease in super-regional Montgomeryville market directly off Five Points Intersection: Route 309 & Route 202
- New facade renovations
- Ample parking and pylon sign presence available
- Total GLA: 67,550 SF

JOIN   

Demographic	1 Mile	3 Miles	5 Miles
Population	8,349	71,652	147,726
Households	3,094	27,078	55,801
Avg HH Income	\$145,058	\$121,459	\$130,092
Daytime Employees	6,067	36,621	70,890



Questions? Contact Us.



Corporate Office
224 St. Charles Way, Suite 290
York, PA 17402

Conshohocken Office
100 Front Street, Suite 560
West Conshohocken, PA 19428

Greg Jones

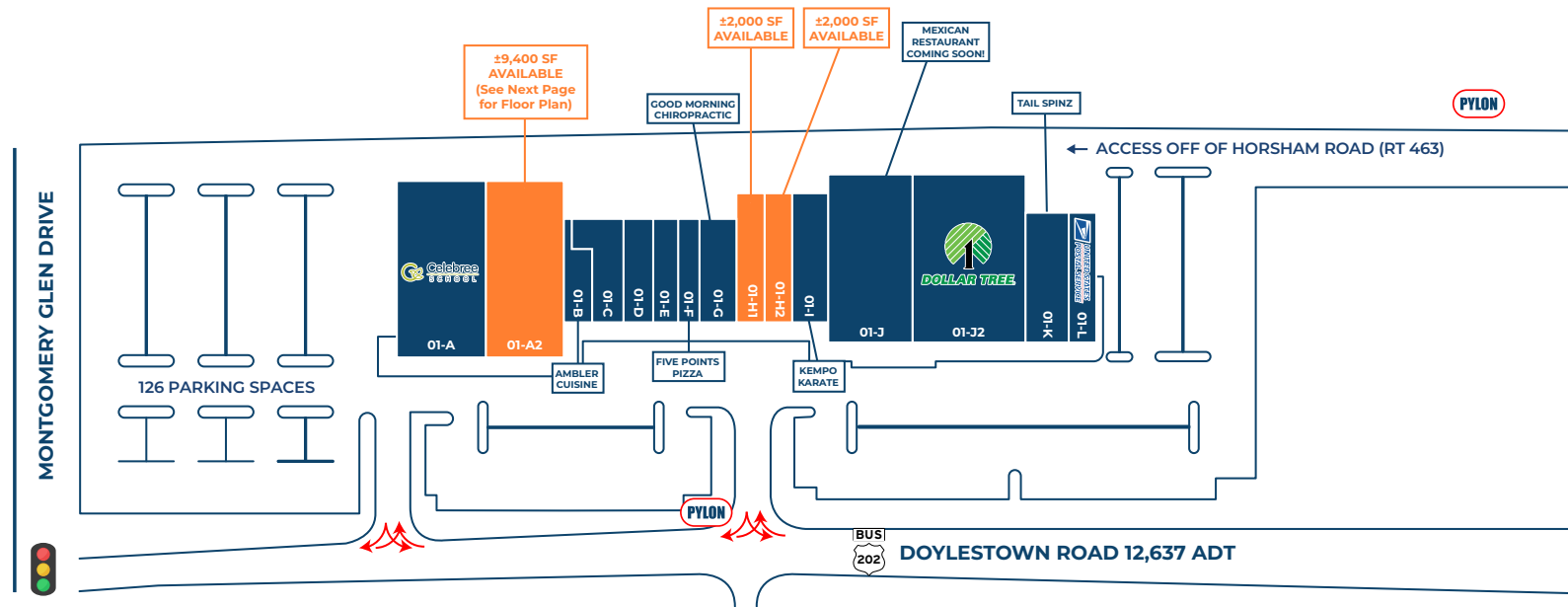
GJones@jcbarprop.com

p. 610-234-6491

c. 484-948-5217



Unit	Tenant	Square Footage
01-A	Celebree	±10,200 SF
01-A2	AVAILABLE	±9,400 SF
01-B	Ambler Asian Cuisine	±1,383 SF
01-C	New Century Nails & Spa	±2,217 SF
01-D	Kellyn Hodges, DMD, PC	±2,000 SF
01-E	Country Fresh Cleaners	±1,600 SF
01-F	Blue Bell's Five Points Pizza	±1,600 SF
01-G	Good Morning Chiropractic, PC	±3,340 SF
01-H1	AVAILABLE	±2,000 SF
01-H2	AVAILABLE	±2,000 SF
01-I	Kempo Karate	±3,000 SF
01-J	Boca Del Mar (Coming Soon)	±9,171 SF
01-J2	Dollar Tree	±13,779 SF
01-K	Tail Spinz	±3,000 SF
01-L	USPS	±3,000 SF



Corporate Office
224 St. Charles Way, Suite 290
York, PA 17402

Conshohocken Office
100 Front Street, Suite 560
West Conshohocken, PA 19428

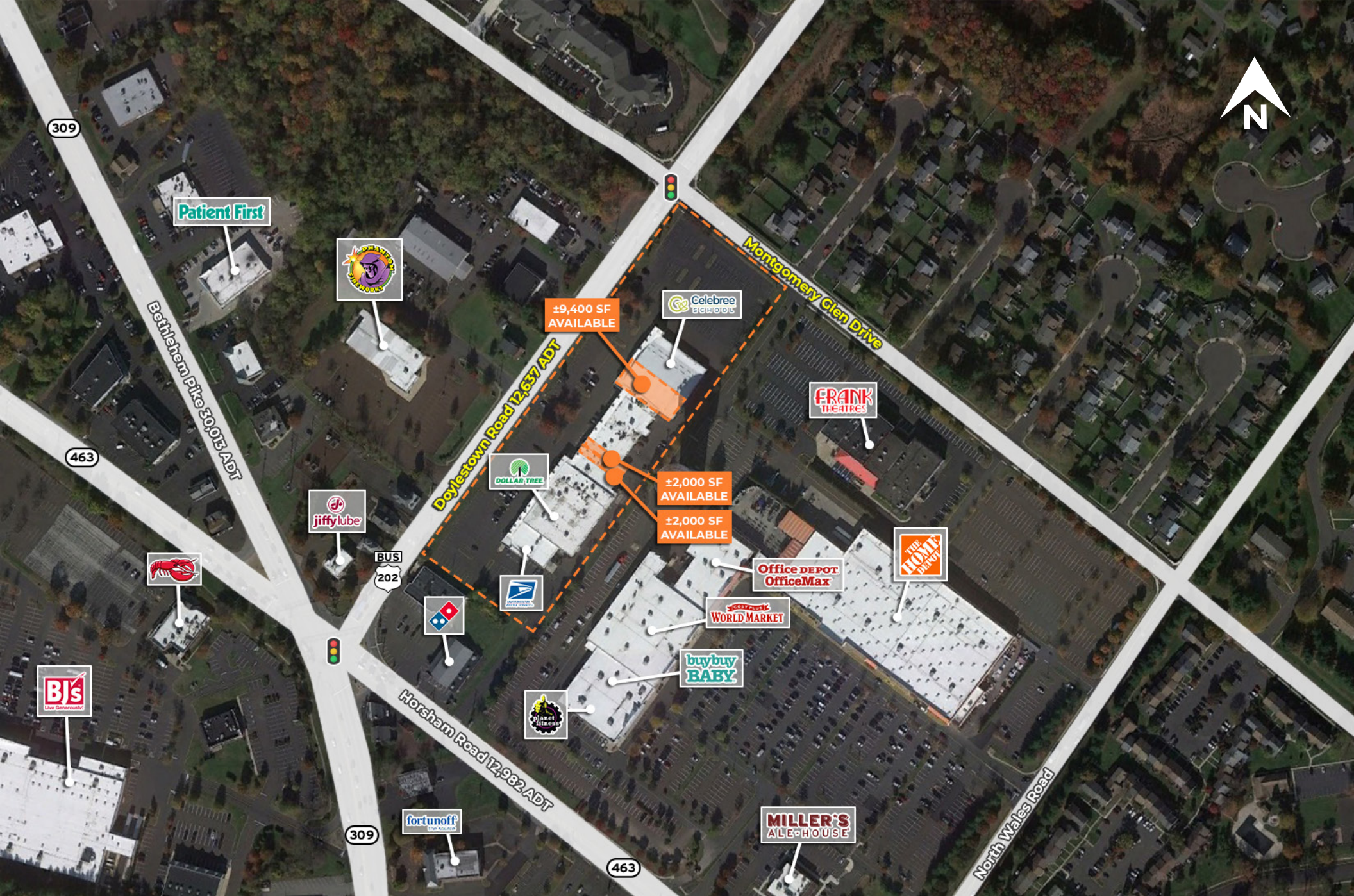
Site Plan



Corporate Office
224 St. Charles Way, Suite 290
York, PA 17402

Conshohocken Office
100 Front Street, Suite 560
West Conshohocken, PA 19428

Floor Plan



Corporate Office
224 St. Charles Way, Suite 290
York, PA 17402
Conshohocken Office
100 Front Street, Suite 560
West Conshohocken, PA 19428

Local Aerial

The information and images contained herein are from sources deemed reliable. However, J.C.BAR Properties, Inc. makes no representation whatsoever as to their accuracy or authenticity. Images shown may be modified for illustrative purposes. Images may be out-of-date and not current.



Corporate Office
224 St. Charles Way, Suite 290
York, PA 17402

Conshohocken Office
100 Front Street, Suite 560
West Conshohocken, PA 19428

Market Aerial

The information and images contained herein are from sources deemed reliable. However, J.C.BAR Properties, Inc. makes no representation whatsoever as to their accuracy or authenticity. Images shown may be modified for illustrative purposes. Images may be out-of-date and not current.





Corporate Office
224 St. Charles Way, Suite 290
York, PA 17402

Conshohocken Office
100 Front Street, Suite 560
West Conshohocken, PA 19428

Site Photos