

120 Gordon Nagle Trail

Pottsville, PA 17901

±2.99 Acres of Land Available For Lease or Sale | Approved For Gas!



Questions? Contact Us.

Colin Hodgson

CHodgson@jcbarprop.com

p. 610-234-6491

c. 302-588-8179

120 Gordon Nagle Trail

Pottsville, PA 17901

±2.99 Acres of Land Available For Lease or Sale | Approved For Gas!

Highlights

- Site Approved Gas Station Ready to Be Built with Great Visibility Along Gordon Nagle Trail with 10,221 AADT
- Will be 1 of 3 Gas Stations Along the Road For 7 Miles
- Close Proximity to Route 61 with 21,253 AADT and Pottsville Street with 12,533 AADT

JOIN THESE MAJOR LOCAL AREA RETAILERS



Demographic	1 Mile	3 Miles	5 Miles
Population	2,002	16,752	42,275
Households	813	6,868	17,378
Avg HH Income	\$90,523	\$93,687	\$91,315
Daytime Employees	1,423	5,746	16,531



Questions? Contact Us.

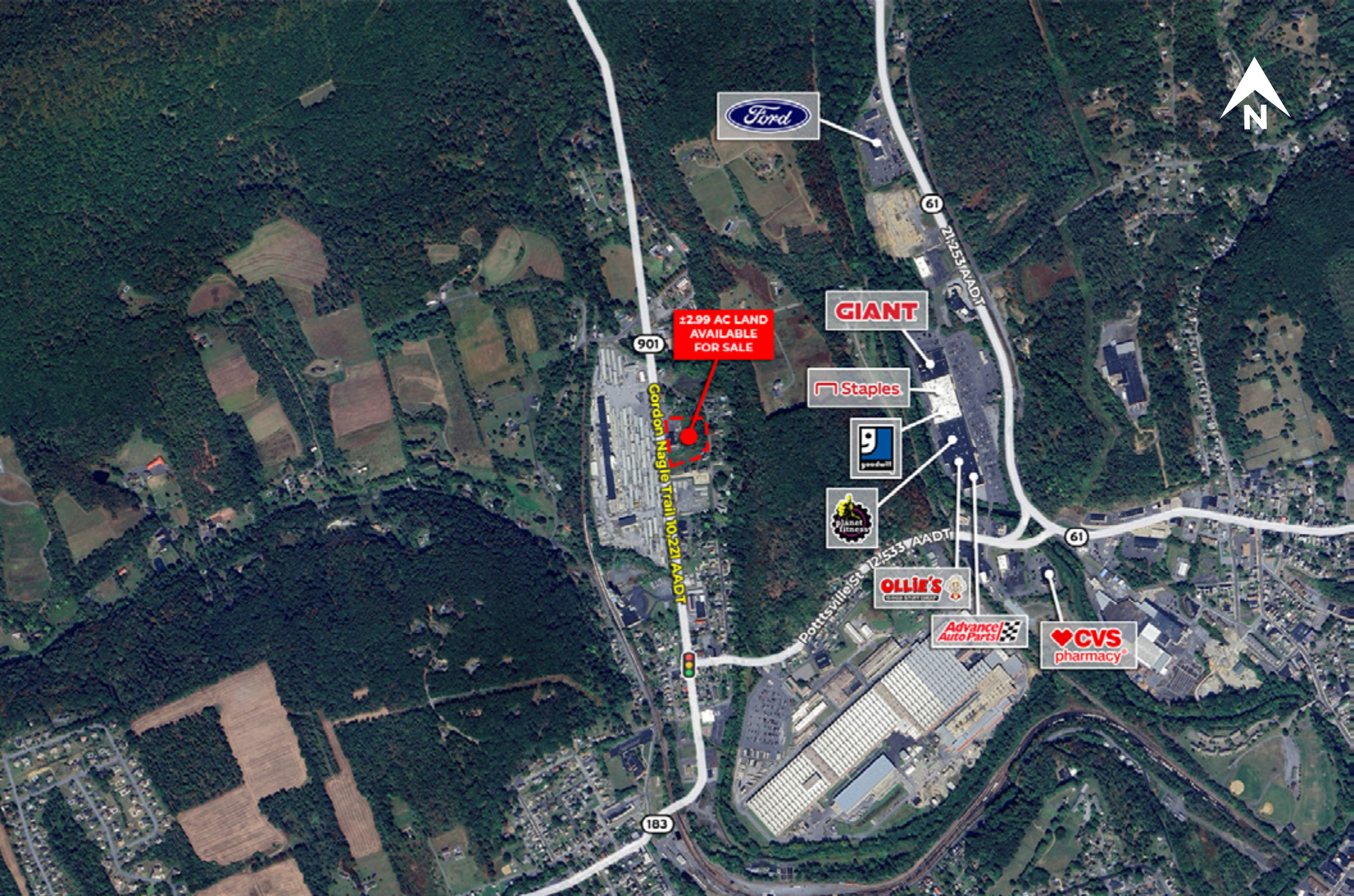
Colin Hodgson

CHodgson@jcbarprop.com

p. 610-234-6491

c. 302-588-8179





Local Aerial