

1040 N. Pearl Street

Bridgeton, NJ 08302

±6.64 AC Land Available For Sale



LAND FOR SALE

Questions? Contact Us.

Greg Jones

GJones@jcbarprop.com

p. 610-234-6491

c. 484-948-5217

1040 N. Pearl Street

Bridgeton, NJ 08302

±6.64 AC Land Available For Sale

Highlights

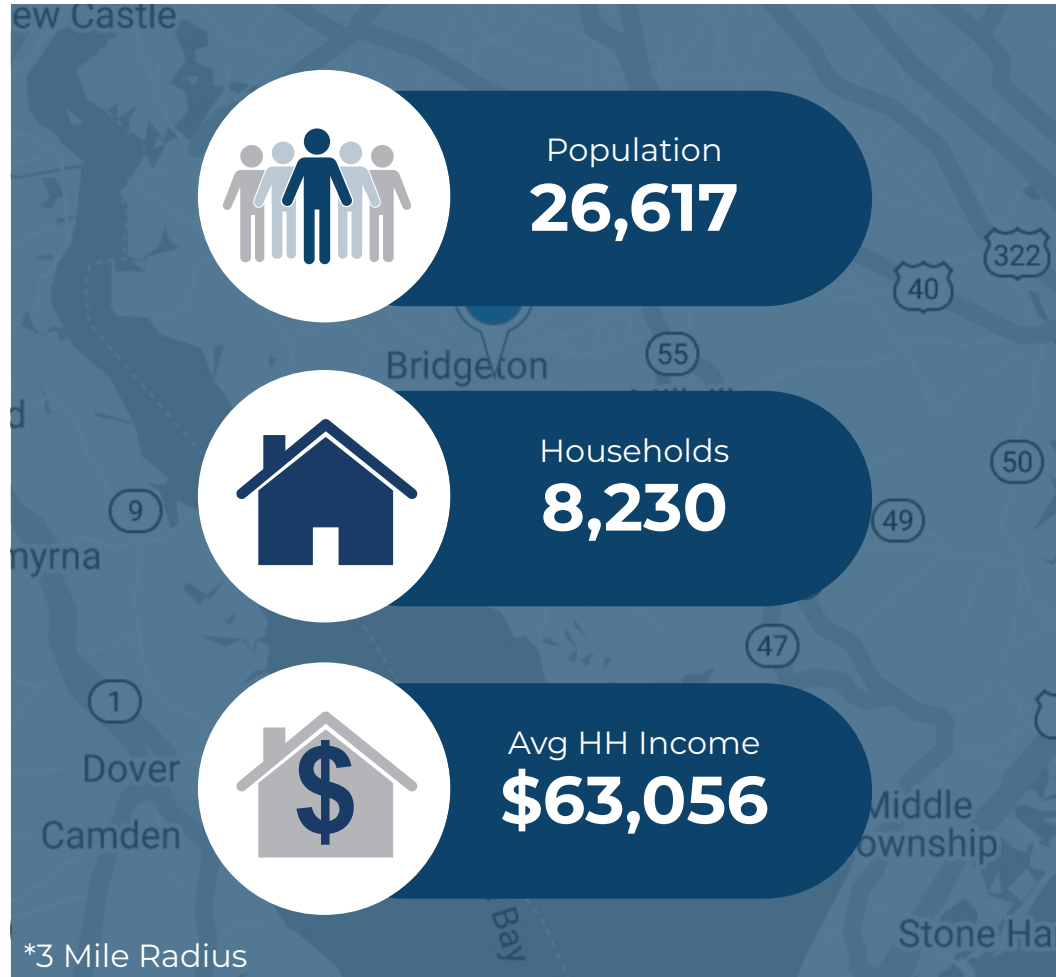
- Located on the major roadway, N Pearl Street (Route 77), with strong traffic counts and visibility
- Zoning: B2 (Business District) w/ Land Zoned NEC (Commercial)
- Ingress/Egress available on NJ State Highway Route 77 with 14,310 VPD

JOIN THESE MAJOR LOCAL AREA RETAILERS



Demographic	1 Mile	3 Miles	5 Miles
Population	1,525	26,617	42,721
Households	592	8,230	12,720
Avg HH Income	\$73,864	\$63,056	\$66,974

Traffic Count N Pearl Street (Route 77): 14,310 ADT



Questions? Contact Us.

Greg Jones

GJones@jcbarprop.com

p. 610-234-6491

c. 484-948-5217

1040 N. Pearl Street

Bridgeton, NJ 08302

±6.64 AC Land Available For Sale

About Bridgeton

Bridgeton is a city in Cumberland County, New Jersey, in the southern part of the state. Bridgeton is approximately 40 miles southeast of Center City Philadelphia with a city's population reflecting a continual growth within the last five years.

Bridgeton, Millville, and Vineland are the three principal cities of the Vineland-Millville-Bridgeton Primary Metropolitan Statistical Area, which encompasses those cities and all of Cumberland County for statistical purposes and which constitutes a part of the Delaware Valley.



Questions? Contact Us.

Greg Jones

GJones@jcbarprop.com

p. 610-234-6491

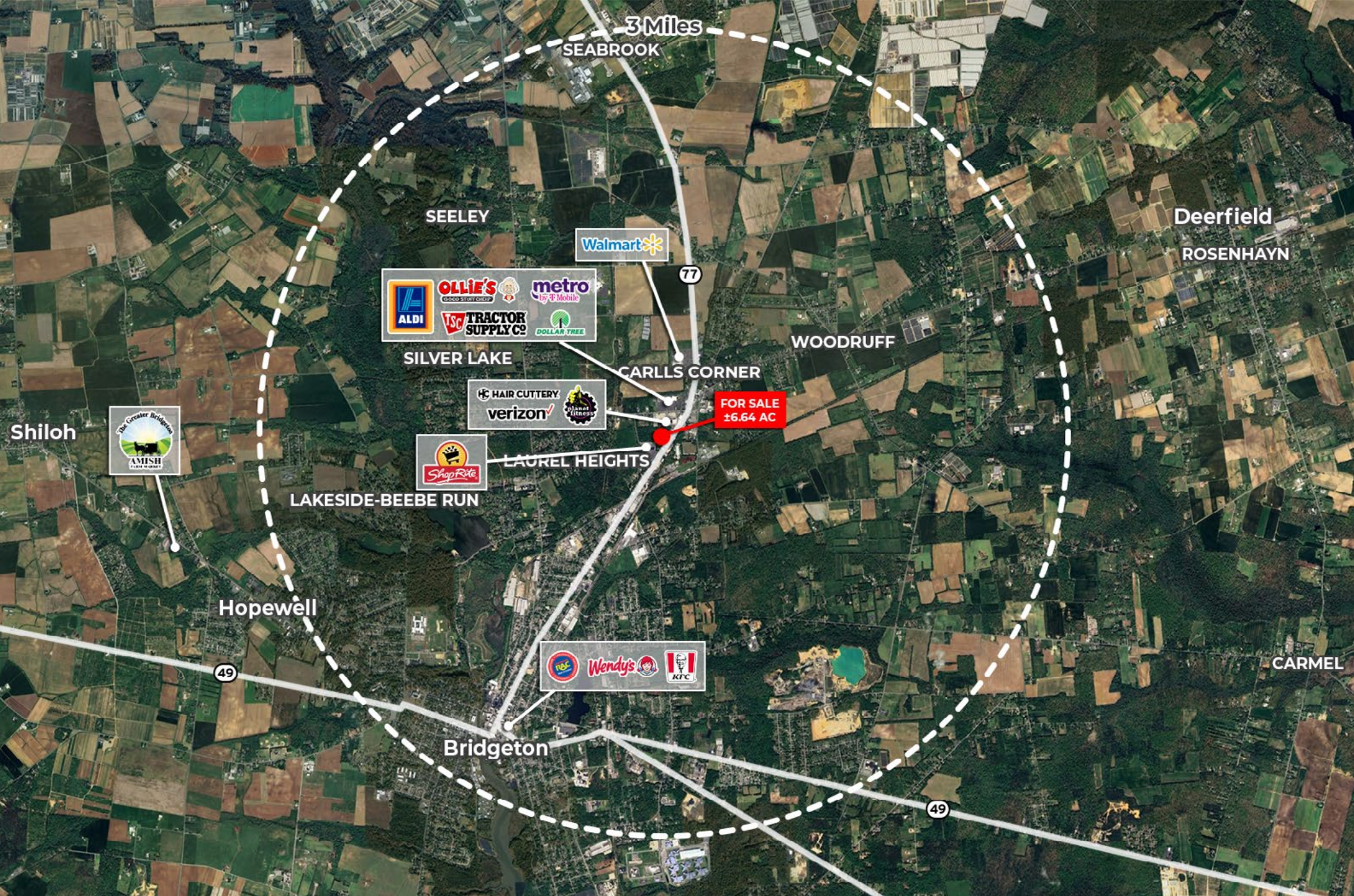
c. 484-948-5217



Concept Plan



Local Aerial



Market Aerial