

22 Hoover Ave

DuBois, PA 15801

Pad Site: 1.00 AC



Demographics



14,178

Population



6,144

Households



\$57,968

Avg Household
Income

- Route 219 Count: - 12,881 A.D.T.



224 St. Charles Way, Suite 290 York, PA 17402
jcbarprop.com | P: 717-761-7801

Questions? Get in touch.



Melissa Lippe

P: 610-206-3319 | M: 215-264-6964
mlippe@jcbarprop.com

22 Hoover Ave

DuBois, PA 15801

Pad Site: 1.00 AC

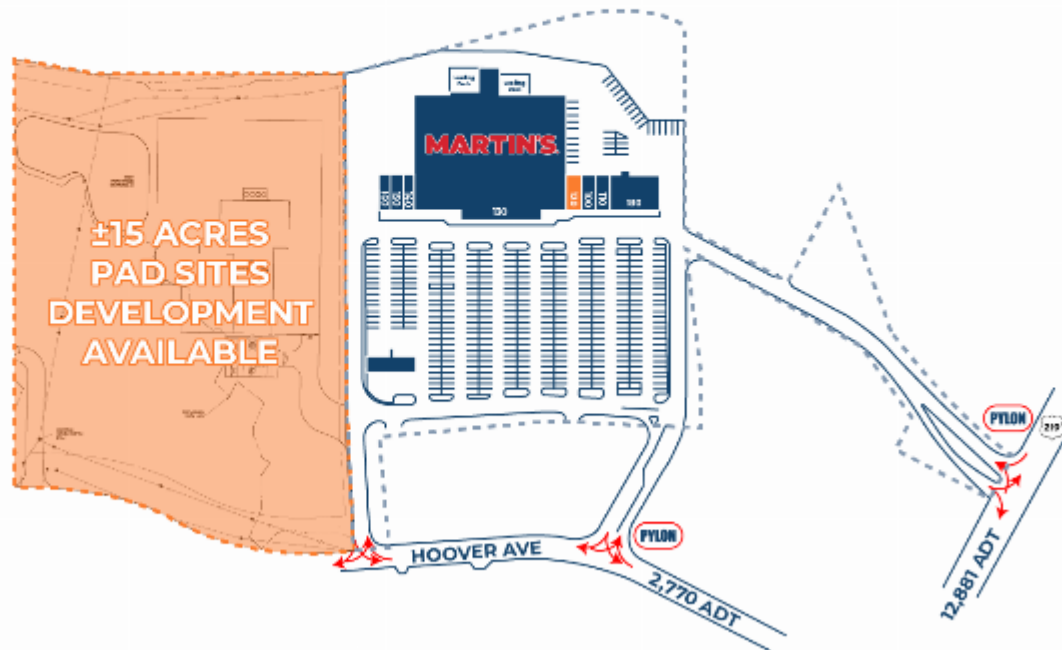


Liberty Marketplace

22 Hoover Ave, DuBois, PA 15801



Unit	Tenant	Square Footage
100	US Postal Service	+2,400 SF
110	China One	±1,200 SF
120	AVAILABLE	+1,200 SF
130	Martin's	+55,000 SF
140	State Farm	±1,200 SF
150	Prosko	±1,200 SF
160	CAB Salon	±1,200 SF
180	Snap Fitness	±4,800 SF
LAND AVAILABLE		±15 AC



Spaces

- **Pad Site Space (Land)**
1.00 AC
- **Small Shops Space (Unit 120)**
1,200 SF / Uses: Retail, Hospitality, Services



224 St. Charles Way, Suite 290 York, PA 17402
jcbarprop.com | P: 717-761-7801

Questions? Get in touch.



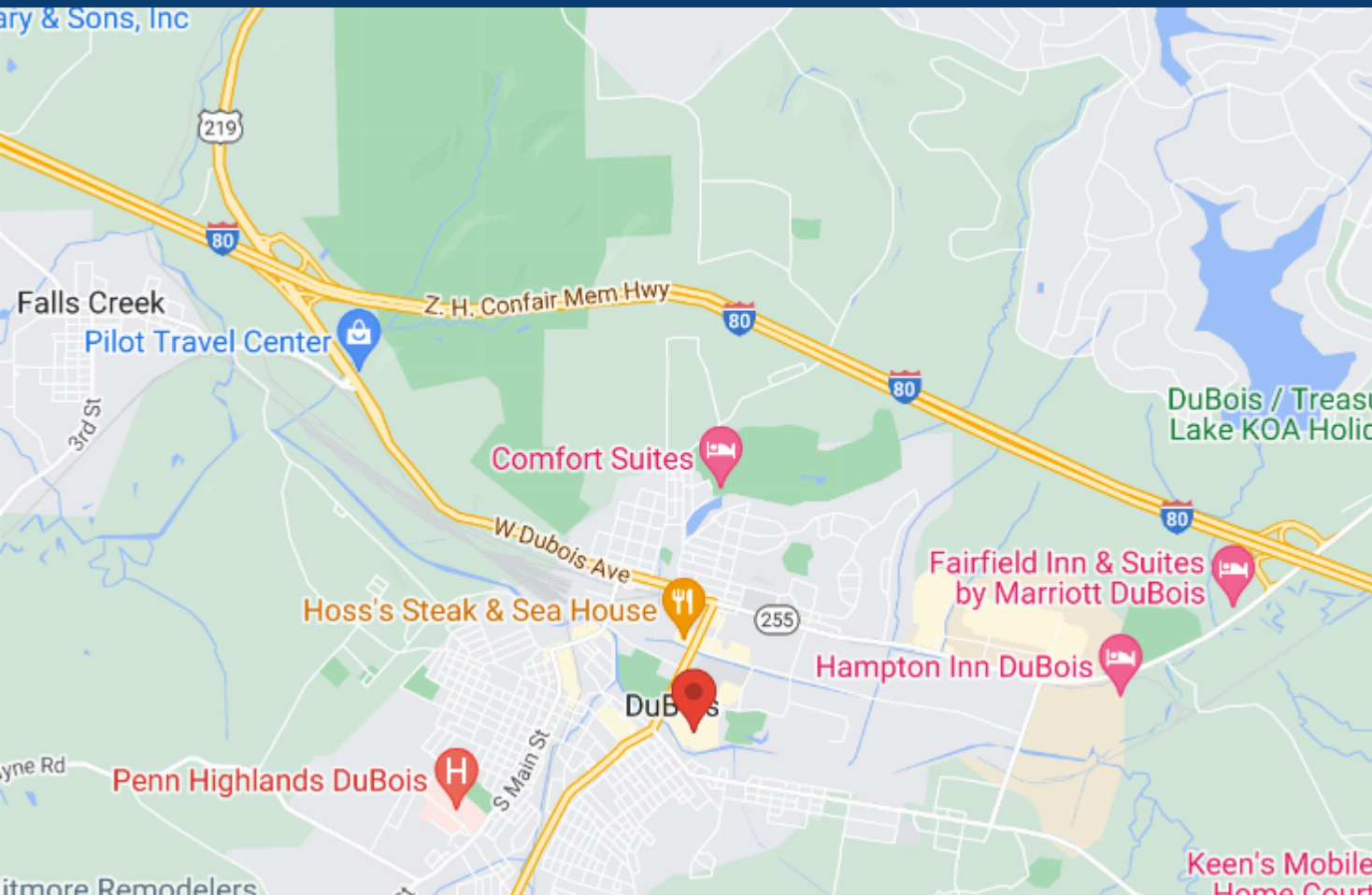
Melissa Lippe

P: 610-206-3319 | M: 215-264-6964
mlippe@jcbarprop.com

22 Hoover Ave

DuBois, PA 15801

Pad Site: 1.00 AC



Demographics

Demographic	1 Mile	3 Miles	5 Miles
Population	6,955	14,178	21,656
Households	3,157	6,144	9,351
Avg Household Income	\$58,997	\$57,968	\$57,138
Daytime Employees	6,818	11,196	12,370
Traffic Count	Route 219 - 12,881 A.D.T.		



224 St. Charles Way, Suite 290 York, PA 17402
jcbarprop.com | P: 717-761-7801

Questions? Get in touch.



Melissa Lippe

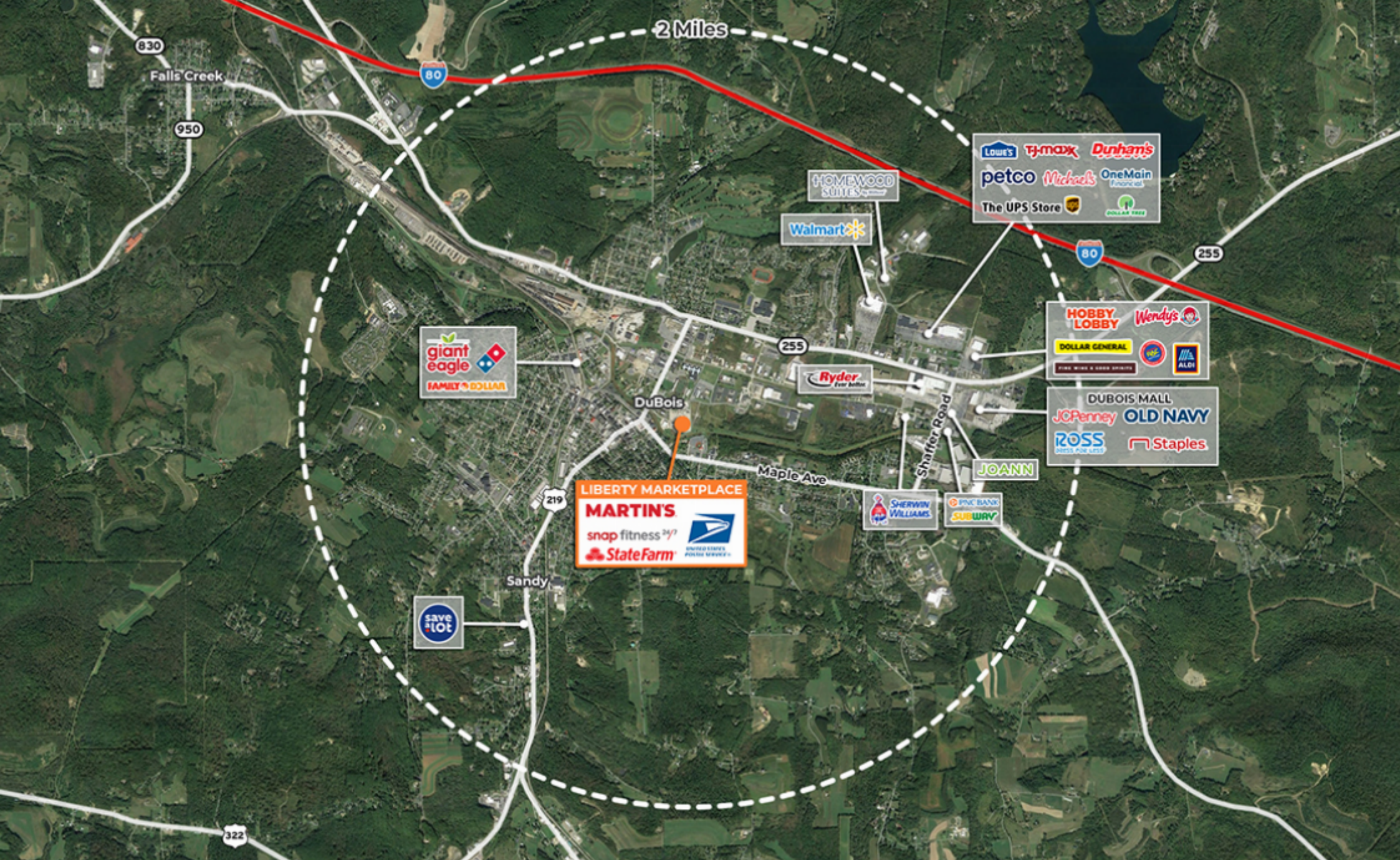
P: 610-206-3319 | M: 215-264-6964
mlippe@jcbarprop.com




 **22 Hoover Ave**
DuBois, PA 15801



224 St. Charles Way, Suite 290 York, PA 17402
jcbarprop.com | P: 717-761-7801




22 Hoover Ave
 DuBois, PA 15801



224 St. Charles Way, Suite 290 York, PA 17402
jcbarprop.com | P: 717-761-7801